



Imagery ©2019 Google, Imagery ©2019 CNES / Airbus, Maxar Technologies, U.S. Geological Survey, Map data ©2019 50 ft





300 HENRY AVENUE
BERKELEY, CA 94710

PROJECT TITLE

**City of Los Altos
Los Altos Community
Center**

97 Hillview Ave.
Los Altos, CA 94022

ISSUE TITLE

ISSUED FOR BID

ISSUE DATE 06/13/19

NOLL & TAM JOB NUMBER 21730

REVISIONS

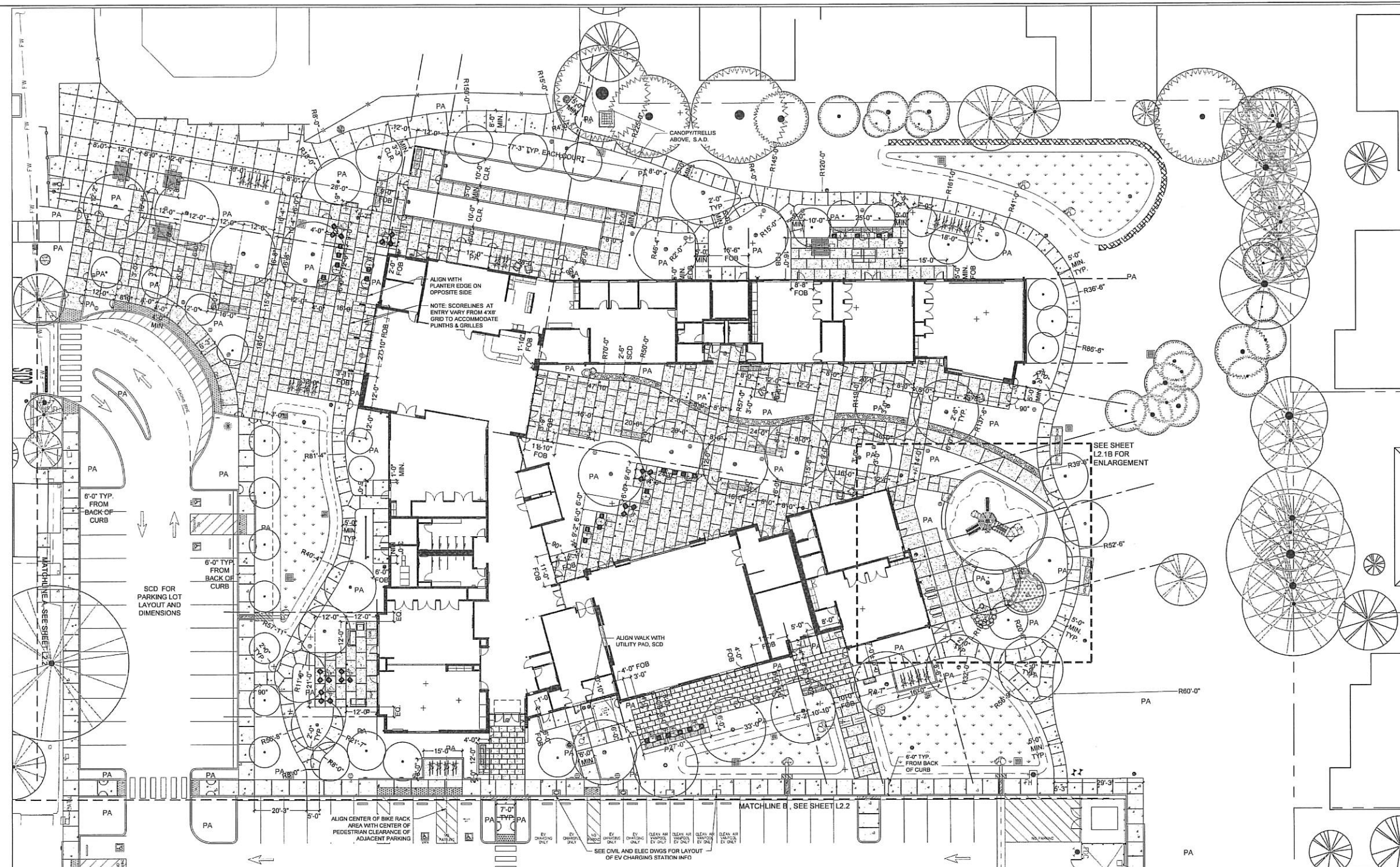
NO.	DATE	DESCRIPTION
1	6/27/19	Addendum 1/Plan Check 2

SHEET TITLE

**LAYOUT PLAN:
MAIN SITE**

SHEET NUMBER

L2.1



MAIN SITE

LEGEND

	(N) TREE		LANDSCAPE DIMENSION BASE LINE: FACE OF BUILDING OR CORNER OF BUILDING
	(E) TREE TO REMAIN & BE PROTECTED		ALIGN
	PROPERTY LINE		R RADIUS POINT
	MATCHLINE		FOB FACE OF BUILDING
	PA PLANTING AREA		OC ON CENTER
	SCD SEE CIVIL DRAWINGS		EQ EQUAL
	SAD SEE ARCHITECTURAL DRAWINGS		
	SSD SEE STRUCTURAL DRAWINGS		
	TYP. TYPICAL		

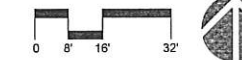
DETAIL LAYOUT REFERENCES

	BENCH WITH ADA COMPANION SEATING, MIN. ONE SIDE		4
	BIKE RACK AREA 4 RACKS PER AREA W/ 8 BIKE SPACES, UNLESS NOTED OTHERWISE		3
	TRASH/RECYCLING/COMPOST (CONTRACTOR TO VERIFY FINAL LOCATIONS AND PROVIDE CONC. PAD AS DIRECTED BY OWNER'S REP. NLC)		5

LAYOUT NOTES

- ALL LANDSCAPE DIMENSIONS ARE TAKEN FROM FACE OF BUILDING
- ALL POSTS ARE DIMENSIONED FROM CENTER TO CENTER UNLESS SPECIFICALLY INDICATED OTHERWISE.
- PATHWAY EDGES SHALL BE PARALLEL ALONG THE ENTIRE LENGTH OF PATH.
- ALL CURVES SHALL BE SMOOTH, CONTINUOUS AND TANGENT TO OTHER CURVES & EDGES.
- SOME PAVING HATCHES ARE SHOWN FOR CLARITY ONLY. SEE MATERIALS PLAN FOR FULL PAVING SCHEDULE AND SURFACE MATERIAL LEGEND.
- DIMENSIONS SHOWN INDICATE INTENT & CRITICAL DIMENSIONS. CONTRACTOR SHALL REQUEST CAD DESIGN FILE TO CONFIRM LAYOUT AND ASSIST WITH CURVING PATHS WITH LARGE RADII.
- CONTRACTOR SHALL REVIEW LAYOUT (STAKING, CHALK PAINT) FOR APPROVAL BY OWNER'S REP PRIOR TO INSTALLATION.
- S.A.D. FOR ALL OVERHEAD CANOPY LAYOUTS.
- SEE L2.3-4 FOR SCORING & FURNISHINGS LAYOUT
- SCORING AT OFFSET GRID IS 4' X 8' (TYP). SCORELINES AT CURVED PATHS ARE PERPENDICULAR TO PATH EDGES
- USING CONTRACTOR'S PREFERRED METHOD (STRING, CHALK PAINT, OR OTHER), CONTRACTOR SHALL OBTAIN APPROVAL FROM OWNER'S REPRESENTATIVE FOR LAYOUT OF PLAY EQUIPMENT SAFETY ZONE AND ITS ADJACENT CURBS AND SEATWALLS, IN RELATION TO THE SURROUNDING IMPROVEMENTS (SUCH AS FENCE, WALKS, CURVING STONE CHANNEL, WATER PLAY AREA, ETC.), PRIOR TO INSTALLATION OF ANY OF THESE ITEMS.

SCALE: 1/16" = 1'-0"



NORTH

KEY MAP

