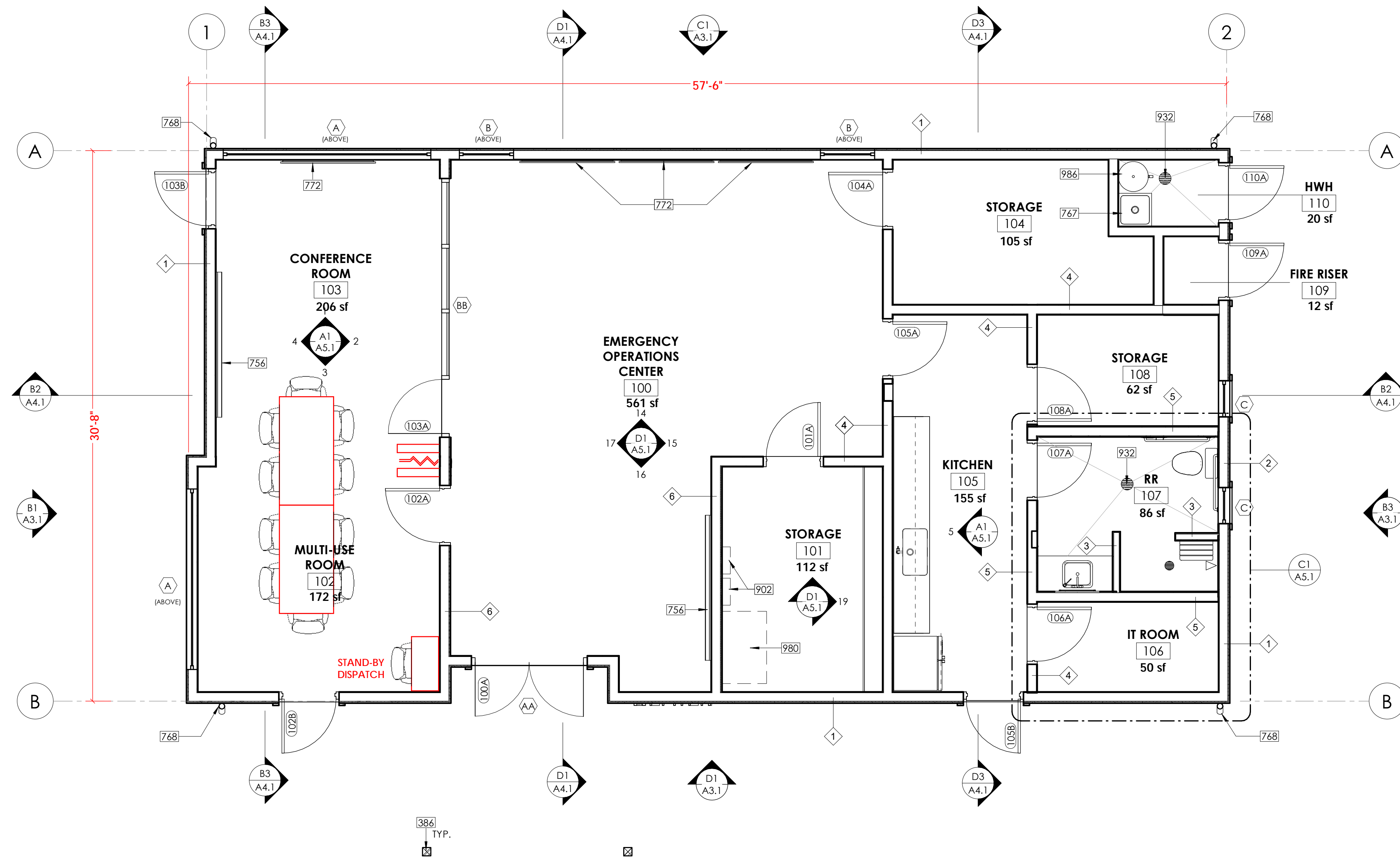


EXHIBIT 1 - OPTION A

1,509 SF NET



CONSTRUCTION NOTES

- 386 COVERED WALKWAY STRUCTURAL COLUMN
- 756 WHITEBOARD
- 767 MOP SINK, SEE PLUMBING
- 768 DOWNSPOUT
- 772 WALL MOUNTED TV AND BRACKET, PROVIDE BLOCKING
- 902 ELECTRICAL PANEL, SEE ELECTRICAL
- 932 FLOOR DRAIN, SEE PLUMBING
- 980 UTILITY SWITCHBOARD, SEE ELECTRICAL
- 986 WATER HEATER, SEE PLUMBING

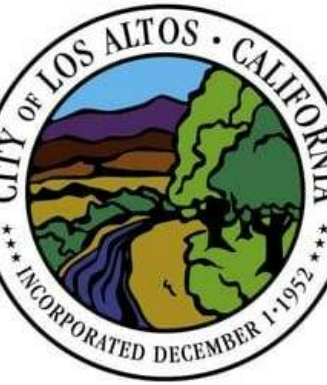


PROJECT:

CITY OF LOS ALTOS
EMERGENCY
OPERATIONS CENTER
1 N SAN ANTONIO ROAD
LOS ALTOS, CA 94022

NOTES

1. SEE A2.2 FOR DIMENSION PLANS
2. SEE ENLARGED PLANS FOR ADDITIONAL INFORMATION
3. SEE A2.3 FOR REFLECTED CEILING PLANS
4. SEE A4.9 & A4.10 FOR WALL TYPES
5. SEE A6.1 FOR ROOM FINISH SCHEDULE
6. SEE A6.2 FOR DOOR, WINDOW AND STOREFRONT SCHEDULE
7. STAINLESS STEEL CORNER GUARDS, TYP. ALL EXTERIOR CORNERS ON INTERIOR OF BUILDING
8. VERIFY LOCATION OF ALL STATION ALERTING EQUIPMENT WITH ARCHITECT PRIOR TO ROUGH-IN
9. ACCESSIBLE RESTROOMS 102 AND 117 ON THE FIRST FLOOR SHALL COMPLY WITH ALL ACCESSIBLE REQUIREMENTS AND NOTES ON DETAILS A3/T-3 AND D3/T-3. LAVATORIES SHALL COMPLY WITH DETAILS C1/T-4 AND C2/T-4.
10. SEE DETAIL A1/A7.9 FOR PERPENDICULAR ABUTMENT AT CONCRETE/STUD WALL.



DESCRIPTION:	DATE:
PLANNING SUBMITTAL	03/30/20
PLANNING RESUBMITTAL	08/05/20
CITY COUNCIL SUBMITTAL	10/01/20

LEGEND

- 2x4 STUD WALL
- 2x6 STUD WALL

NOT FOR CONSTRUCTION

PROJECT NUMBER: 180803
APPROVED BY: JK
CHECKED BY: CM
DRAWN BY: KD

SHEET TITLE:

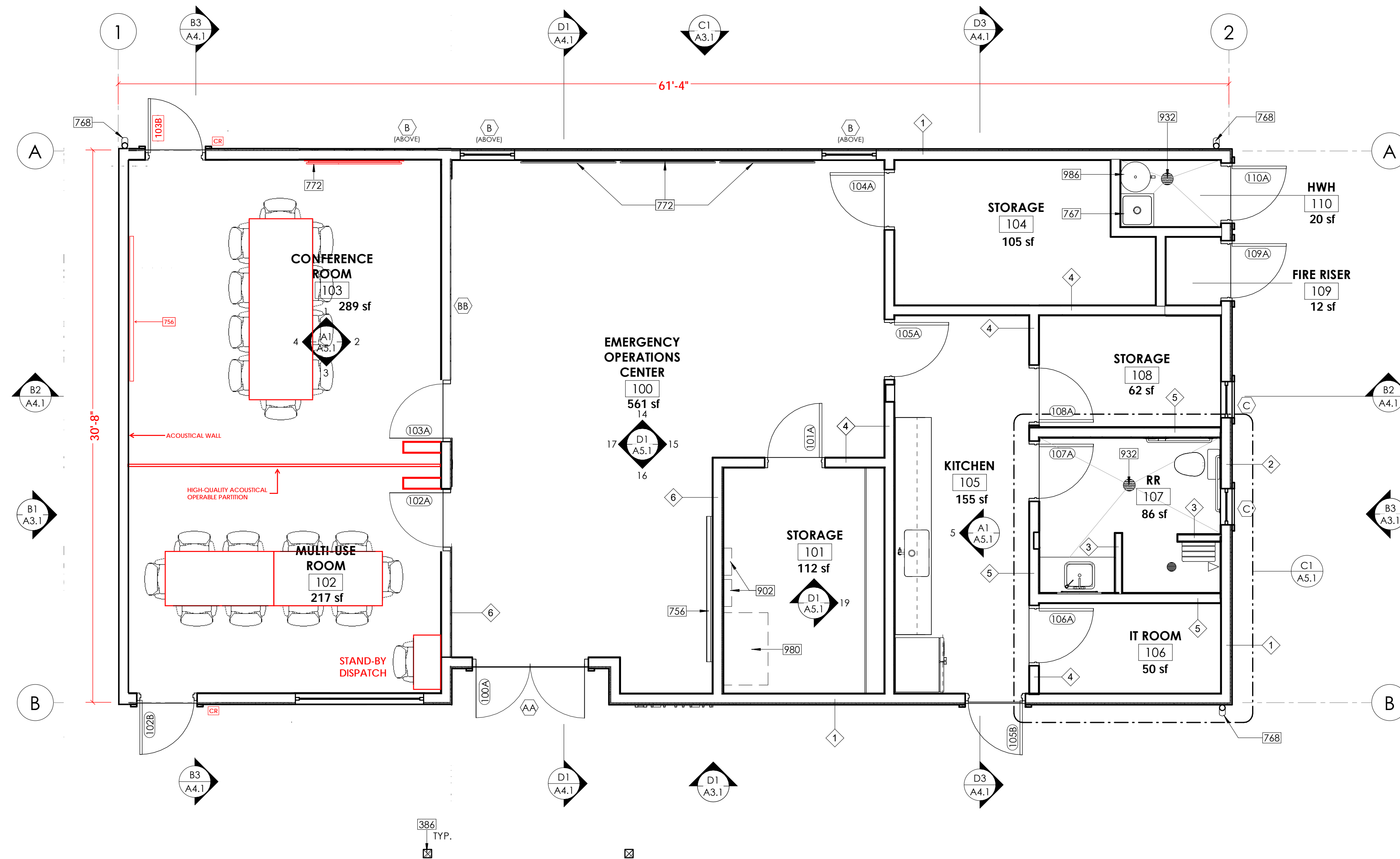
FLOOR PLAN

SHEET NUMBER:

A2.1

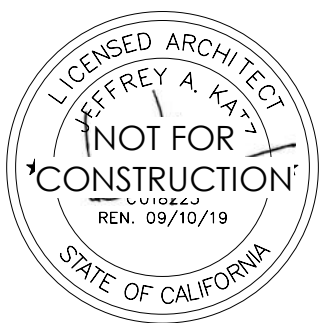
EXHIBIT 2 - OPTION B

1,637 SF NET



CONSTRUCTION NOTES

- 386 COVERED WALKWAY STRUCTURAL COLUMN
- 756 WHITEBOARD
- 767 MOP SINK, SEE PLUMBING
- 768 DOWNSPOUT
- 772 WALL MOUNTED TV AND BRACKET, PROVIDE BLOCKING
- 902 ELECTRICAL PANEL, SEE ELECTRICAL
- 932 FLOOR DRAIN, SEE PLUMBING
- 980 UTILITY SWITCHBOARD, SEE ELECTRICAL
- 986 WATER HEATER, SEE PLUMBING

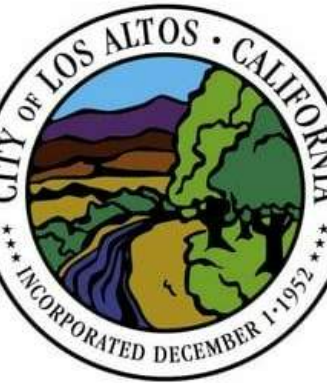


PROJECT:

CITY OF LOS ALTOS
EMERGENCY
OPERATIONS CENTER
1 N SAN ANTONIO ROAD
LOS ALTOS, CA 94022

NOTES

1. SEE A2.2 FOR DIMENSION PLANS
2. SEE ENLARGED PLANS FOR ADDITIONAL INFORMATION
3. SEE A2.3 FOR REFLECTED CEILING PLANS
4. SEE A4.9 & A4.10 FOR WALL TYPES
5. SEE A6.1 FOR ROOM FINISH SCHEDULE
6. SEE A6.2 FOR DOOR, WINDOW AND STOREFRONT SCHEDULE
7. STAINLESS STEEL CORNER GUARDS, TYP. ALL EXTERIOR CORNERS ON INTERIOR OF BUILDING
8. VERIFY LOCATION OF ALL STATION ALERTING EQUIPMENT WITH ARCHITECT PRIOR TO ROUGH-IN
9. ACCESSIBLE RESTROOMS 102 AND 117 ON THE FIRST FLOOR SHALL COMPLY WITH ALL ACCESSIBLE REQUIREMENTS AND NOTES ON DETAILS A3/T-3 AND D3/T-3. LAVATORIES SHALL COMPLY WITH DETAILS C1/T-4 AND C2/T-4.
10. SEE DETAIL A1/A7.9 FOR PERPENDICULAR ABUTMENT AT CONCRETE/STUD WALL.



DESCRIPTION:	DATE:
PLANNING SUBMITTAL	03/30/20
PLANNING RESUBMITTAL	08/05/20
CITY COUNCIL SUBMITTAL	10/01/20

LEGEND

- 2x4 STUD WALL
- 2x6 STUD WALL

NOT FOR CONSTRUCTION

PROJECT NUMBER: 180803
APPROVED BY: JK
CHECKED BY: CM
DRAWN BY: KD

SHEET TITLE:

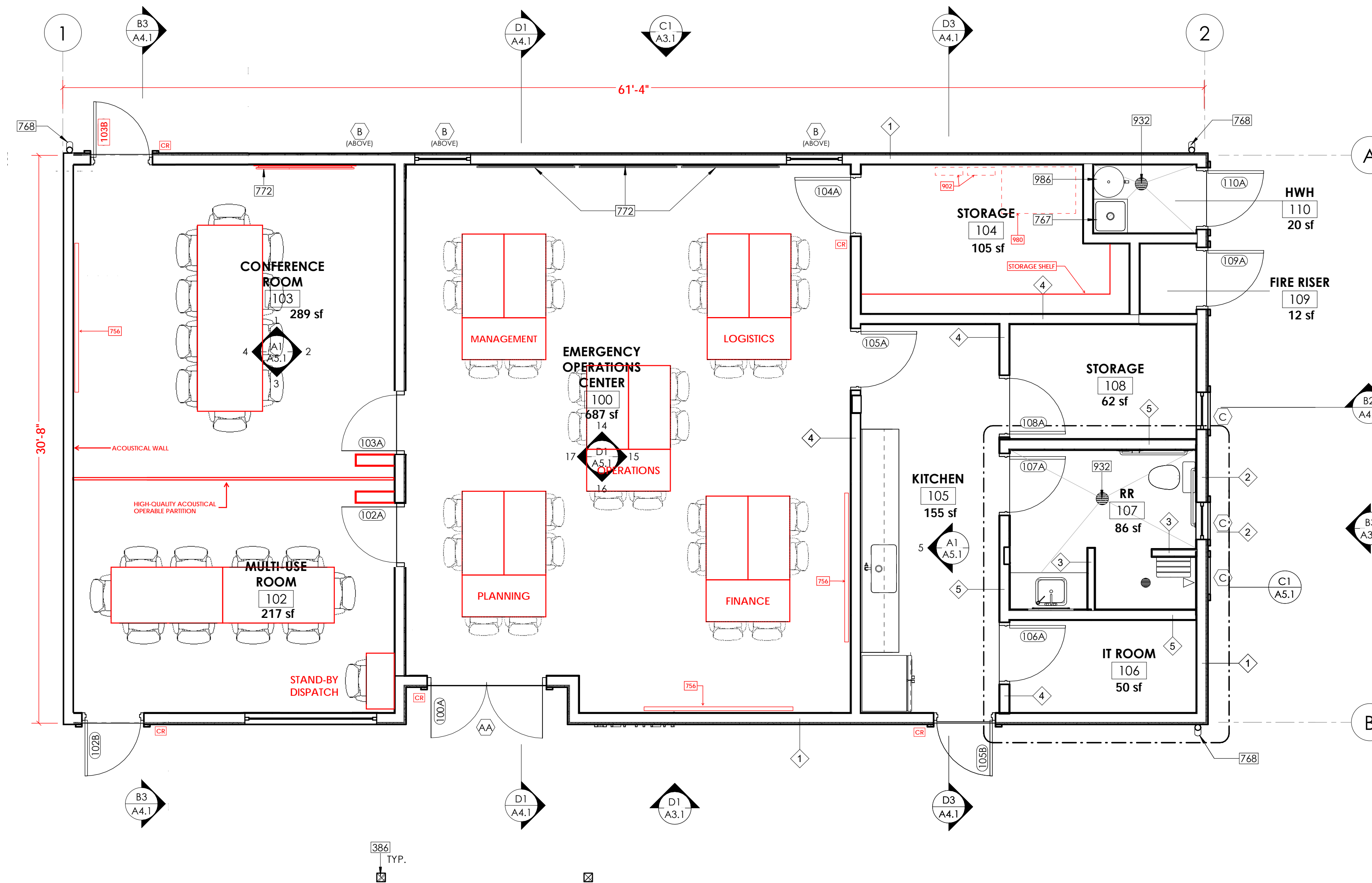
FLOOR PLAN

SHEET NUMBER:

A2.1

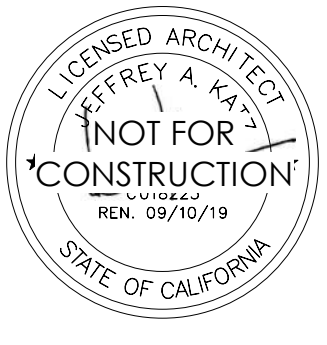
EXHIBIT 3 - OPTION C

1,763 SF NET



CONSTRUCTION NOTES

- 386 COVERED WALKWAY STRUCTURAL COLUMN
- 756 WHITEBOARD
- 767 MOP SINK, SEE PLUMBING
- 768 DOWNSPOUT
- 772 WALL MOUNTED TV AND BRACKET, PROVIDE BLOCKING
- 902 ELECTRICAL PANEL, SEE ELECTRICAL
- 932 FLOOR DRAIN, SEE PLUMBING
- 980 UTILITY SWITCHBOARD, SEE ELECTRICAL
- 986 WATER HEATER, SEE PLUMBING



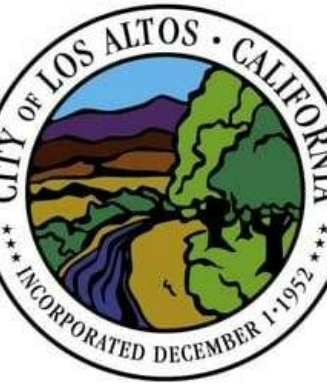
JKA
jeff katz
ARCHITECTURE
633 DEL CERRO BLVD., SAN DIEGO, CA 92120
619.698.9177 | www.jkarchitecture.com

PROJECT:

CITY OF LOS ALTOS
EMERGENCY
OPERATIONS CENTER
1 N SAN ANTONIO ROAD
LOS ALTOS, CA 94022

NOTES

1. SEE A2.2 FOR DIMENSION PLANS
2. SEE ENLARGED PLANS FOR ADDITIONAL INFORMATION
3. SEE A2.3 FOR REFLECTED CEILING PLANS
4. SEE A4.9 & A4.10 FOR WALL TYPES
5. SEE A6.1 FOR ROOM FINISH SCHEDULE
6. SEE A6.2 FOR DOOR, WINDOW AND STOREFRONT SCHEDULE
7. STAINLESS STEEL CORNER GUARDS, TYP. ALL EXTERIOR CORNERS ON INTERIOR OF BUILDING
8. VERIFY LOCATION OF ALL STATION ALERTING EQUIPMENT WITH ARCHITECT PRIOR TO ROUGH-IN
9. ACCESSIBLE RESTROOMS 102 AND 117 ON THE FIRST FLOOR SHALL COMPLY WITH ALL ACCESSIBLE REQUIREMENTS AND NOTES ON DETAILS A3/T-3 AND D3/T-3. LAVATORIES SHALL COMPLY WITH DETAILS C1/T-4 AND C2/T-4.
10. SEE DETAIL A1/A7.9 FOR PERPENDICULAR ABUTMENT AT CONCRETE/STUD WALL.



DESCRIPTION:	DATE:
PLANNING SUBMITTAL	03/30/20
PLANNING RESUBMITTAL	08/05/20
CITY COUNCIL SUBMITTAL	10/01/20

LEGEND

- 2x4 STUD WALL
- 2x6 STUD WALL

NOT FOR CONSTRUCTION

PROJECT NUMBER: 180803
APPROVED BY: JK
CHECKED BY: CM
DRAWN BY: KD

SHEET TITLE:

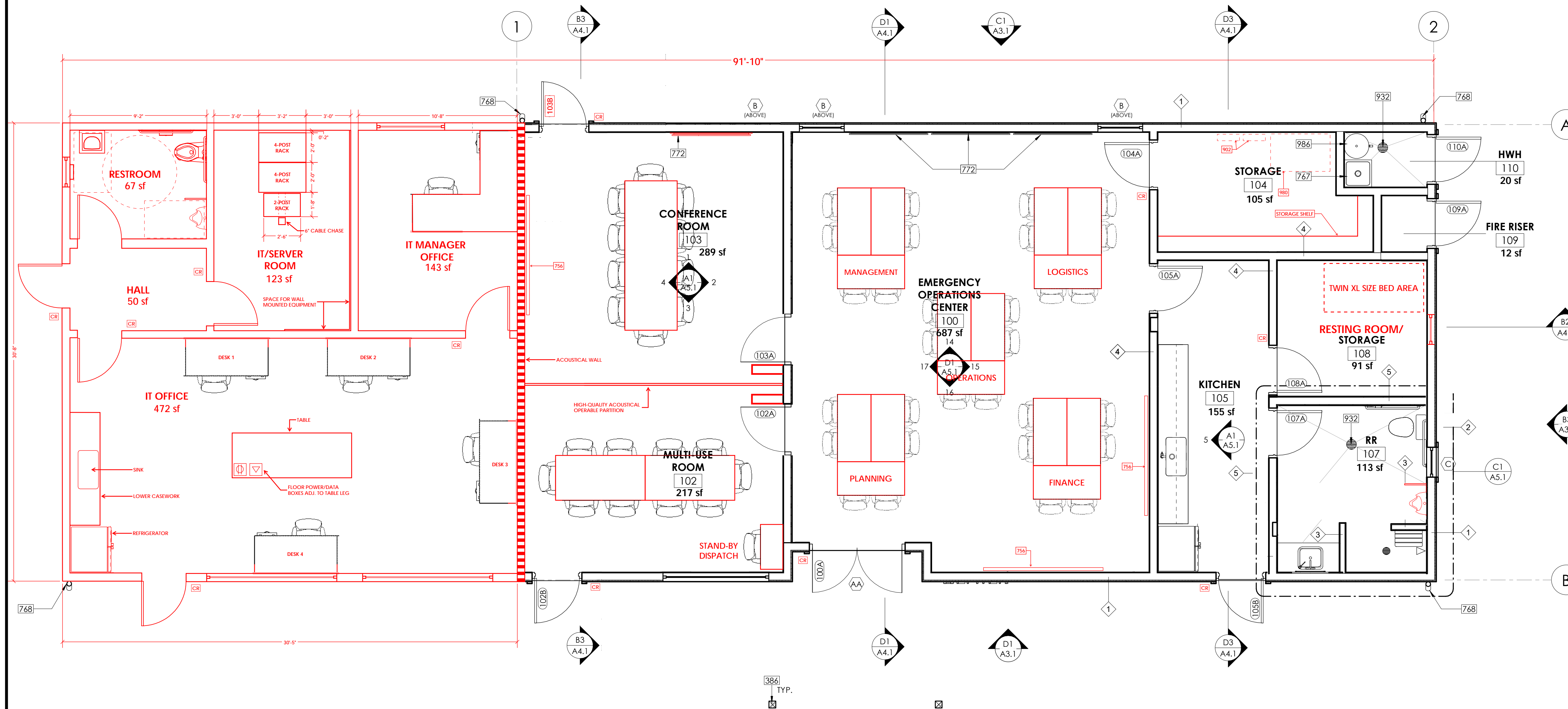
FLOOR PLAN

SHEET NUMBER:

A2.1

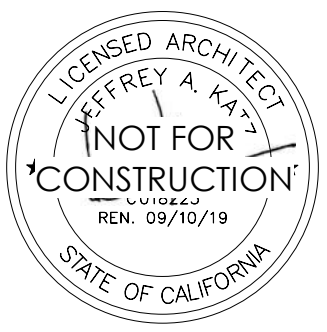
EXHIBIT 4 - OPTION D

2,653 SF NET



CONSTRUCTION NOTES

- 386 COVERED WALKWAY STRUCTURAL COLUMN
- 756 WHITEBOARD
- 767 MOP SINK, SEE PLUMBING
- 768 DOWNSPOUT
- 772 WALL MOUNTED TV AND BRACKET, PROVIDE BLOCKING
- 902 ELECTRICAL PANEL, SEE ELECTRICAL
- 932 FLOOR DRAIN, SEE PLUMBING
- 980 UTILITY SWITCHBOARD, SEE ELECTRICAL
- 986 WATER HEATER, SEE PLUMBING



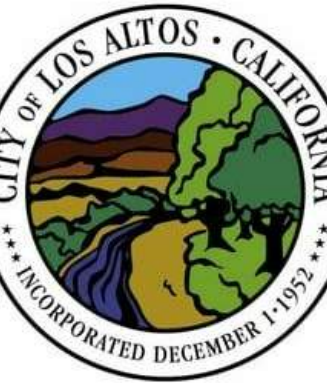
JKA
jeff katz
ARCHITECTURE
6333 DEL CERRO BLVD., SAN DIEGO, CA 92120
619.698.9177 | www.jkatarchitecture.com

PROJECT:

CITY OF LOS ALTOS
EMERGENCY
OPERATIONS CENTER
1 N SAN ANTONIO ROAD
LOS ALTOS, CA 94022

NOTES

1. SEE A2.2 FOR DIMENSION PLANS
2. SEE ENLARGED PLANS FOR ADDITIONAL INFORMATION
3. SEE A2.3 FOR REFLECTED CEILING PLANS
4. SEE A4.9 & A4.10 FOR WALL TYPES
5. SEE A6.1 FOR ROOM FINISH SCHEDULE
6. SEE A6.2 FOR DOOR, WINDOW AND STOREFRONT SCHEDULE
7. STAINLESS STEEL CORNER GUARDS, TYP. ALL EXTERIOR CORNERS ON INTERIOR OF BUILDING
8. VERIFY LOCATION OF ALL STATION ALERTING EQUIPMENT WITH ARCHITECT PRIOR TO ROUGH-IN
9. ACCESSIBLE RESTROOMS 102 AND 117 ON THE FIRST FLOOR SHALL COMPLY WITH ALL ACCESSIBLE REQUIREMENTS AND NOTES ON DETAILS A3/T-3 AND D3/T-3. LAVATORIES SHALL COMPLY WITH DETAILS C1/T-4 AND C2/T-4.
10. SEE DETAIL A1/A7.9 FOR PERPENDICULAR ABUTMENT AT CONCRETE/STUD WALL.



DESCRIPTION: DATE:
 PLANNING SUBMITTAL 03/30/20
 PLANNING RESUBMITTAL 08/05/20
 CITY COUNCIL SUBMITTAL 10/01/20

LEGEND

- 2x4 STUD WALL
- 2x6 STUD WALL

NOT FOR CONSTRUCTION

PROJECT NUMBER: 180803
 APPROVED BY: JK
 CHECKED BY: CM
 DRAWN BY: KD

SHEET TITLE:

FLOOR PLAN

SHEET NUMBER:

A2.1