

MIRAMONTE AVENUE PATH PROJECT

Agency:

City of Los Altos, CA

Design Engineers:

Bellecci & Associates

Speakers:

Aruna Bodduna | City Transportation Services Manager

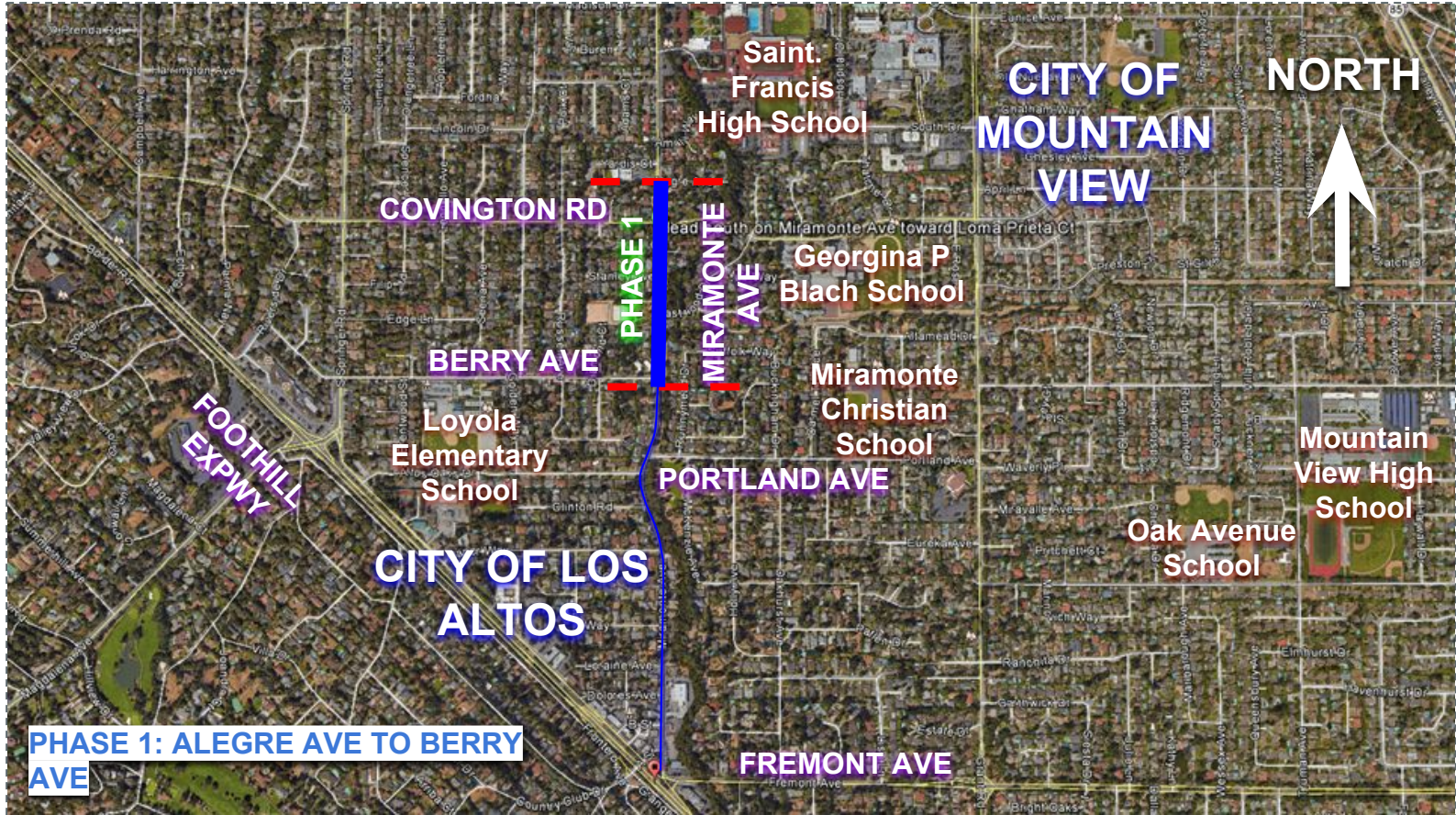
Daniel Leary | Bellecci & Associates

Anoop Admal | Bellecci & Associates

Presentation Agenda

1. **Project Limits of Work & Goals**
2. **Existing Conditions - Phase 1**
3. **August 2016 - Bicycle Pedestrian Advisory Committee (BPAC)**
4. **Miramonte Avenue Improvements - Phase 1**
5. **Typical Sections, Layout, and On-Street Parking**
6. **Flashing Beacon**
7. **Key comments from Community Meeting on 01.22.18**
8. **Next Steps**

1. Project Limits of Work & Goals



1. Project **Goals**

- **Improve Accessible Walkways**
- **Add Accessible Curb Ramps at Intersections**
- **Add Bikeway Facilities**
- **Enhance School Crosswalks**

2. Existing Conditions



Lack of Walkways

2. Existing Conditions



Lack of Curb Ramps

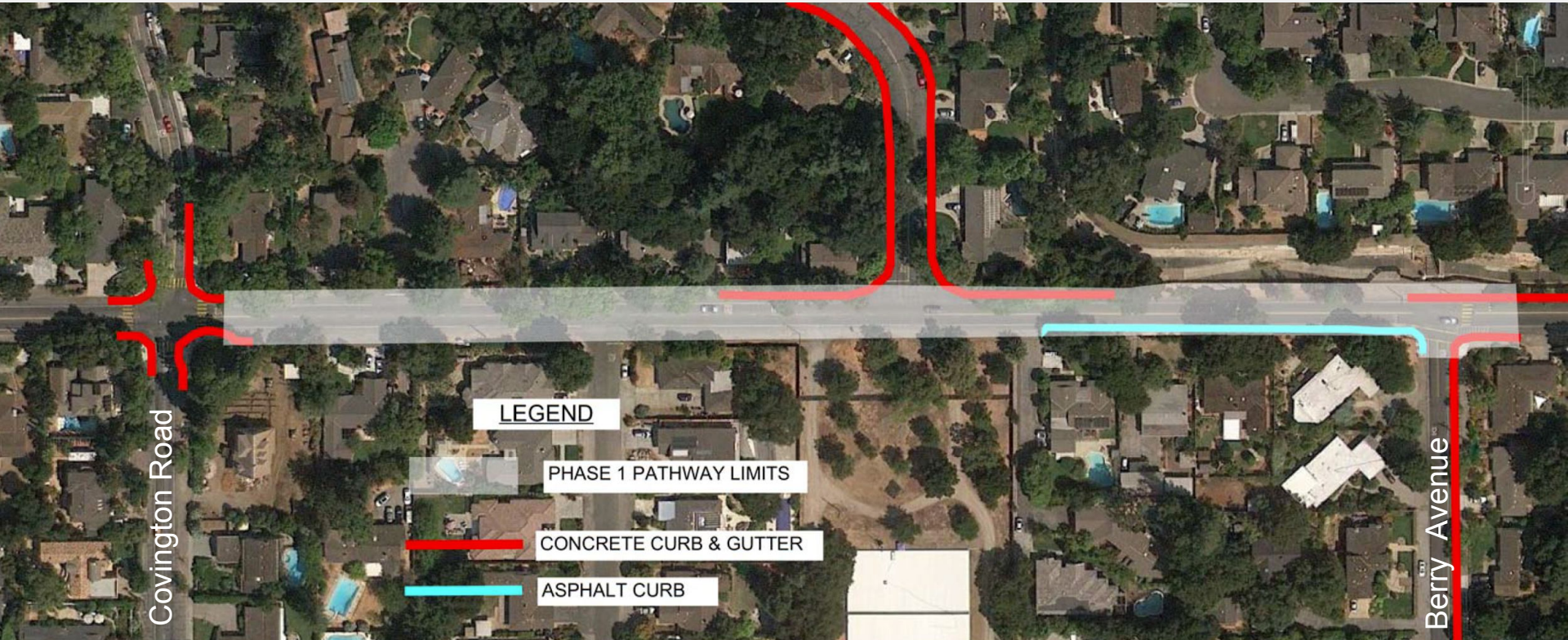
2. Existing Conditions



2. Existing Conditions



2. Exist Conditions - Road Edges with Curb



3. August 2016 - BPAC Meeting Bicycle Pedestrian Advisory Commission



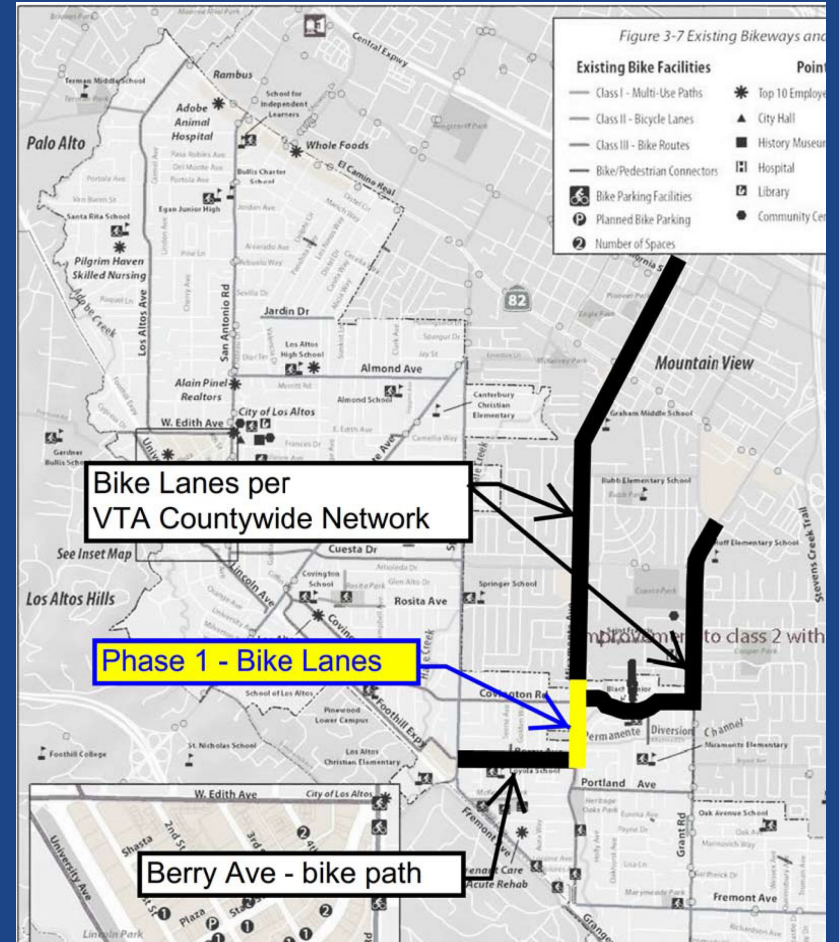
4. Miramonte Ave Improvements - Phase 1

How were Phase 1 limits determined?

- Connects to regional Class II Bikeways
- Connects to existing Class II Bikeway on Covington to Blach School
- Connects to Class I Bike Path on Berry Avenue to Loyola School
- Schedule - Fewer utility relocations/least tree impacts
- Cost estimate for this segment matches the Grant Funding



County Bicycle Map: Regional Connectivity

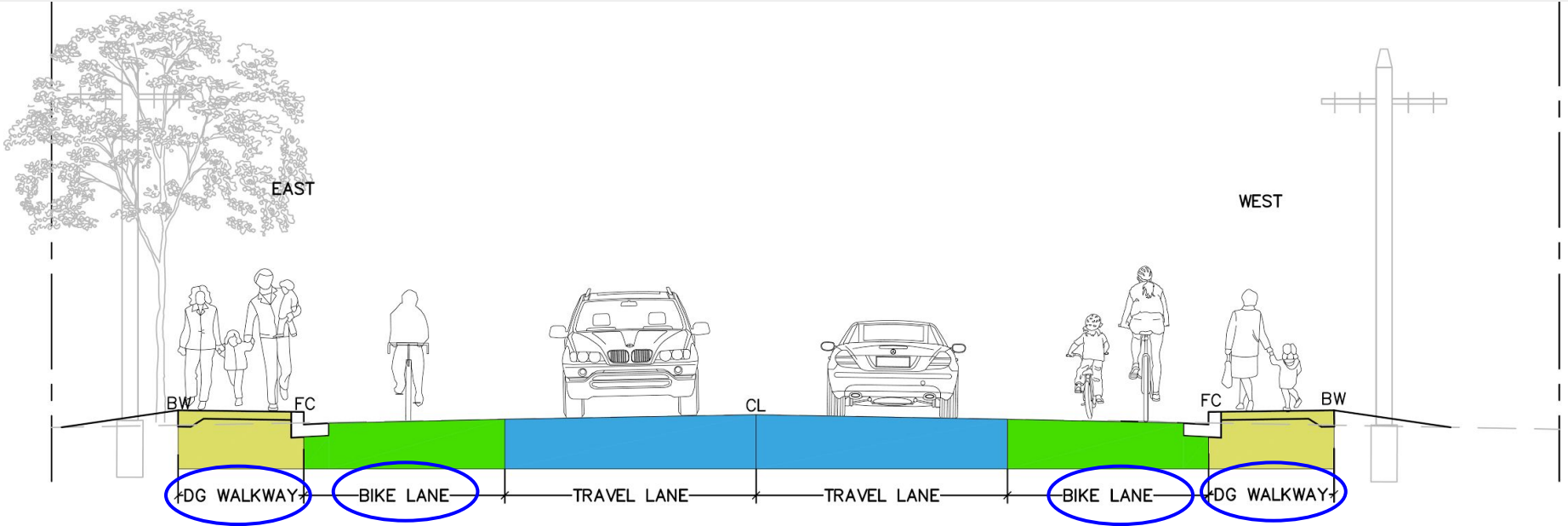


5. Typical Sections, Layout and Parking

Project **Goals**

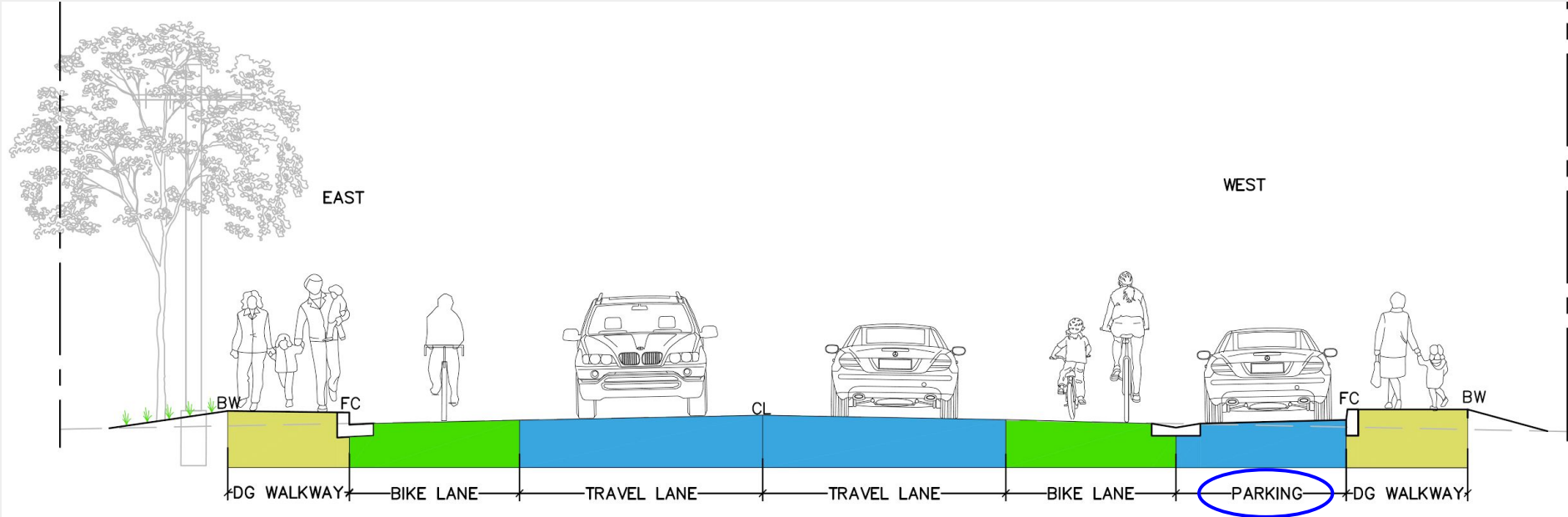
- **Improve Accessible Walkways**
- **Add Accessible Curb Ramps at Intersections**
- **Add Bikeway Facilities**
- **Enhance School Crosswalks**

Typical Section - Miramonte Ave



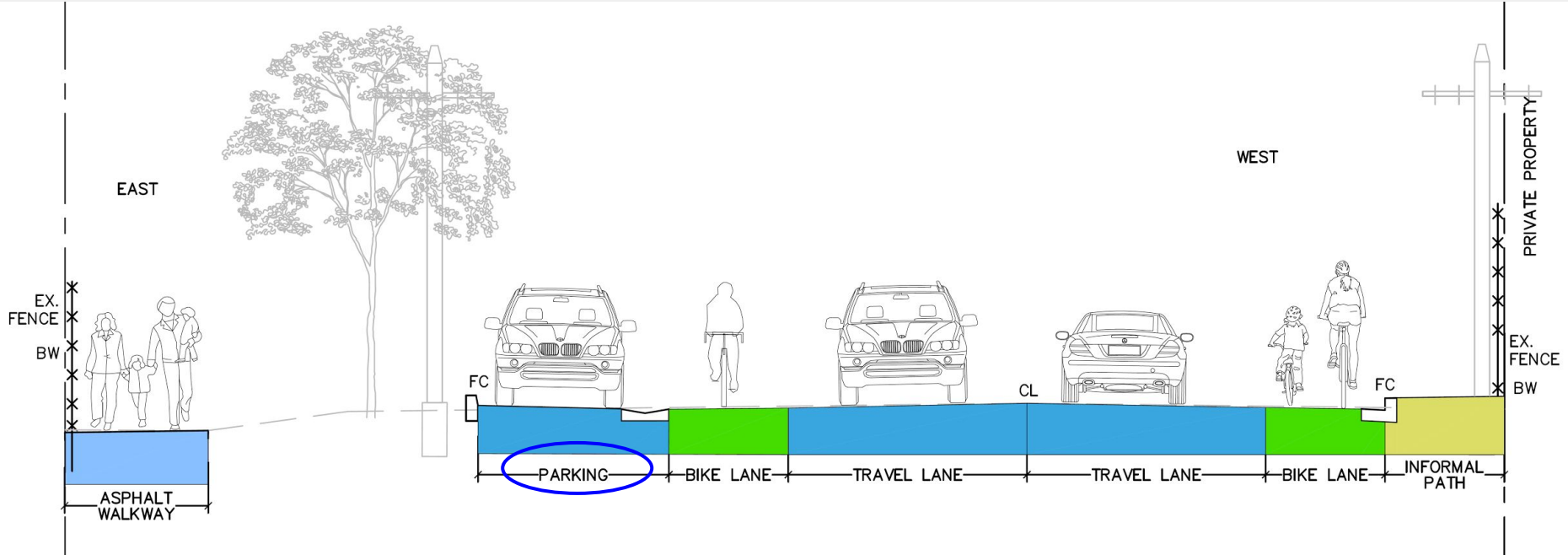
Miramonte Avenue

Typical Section with Parking (West)



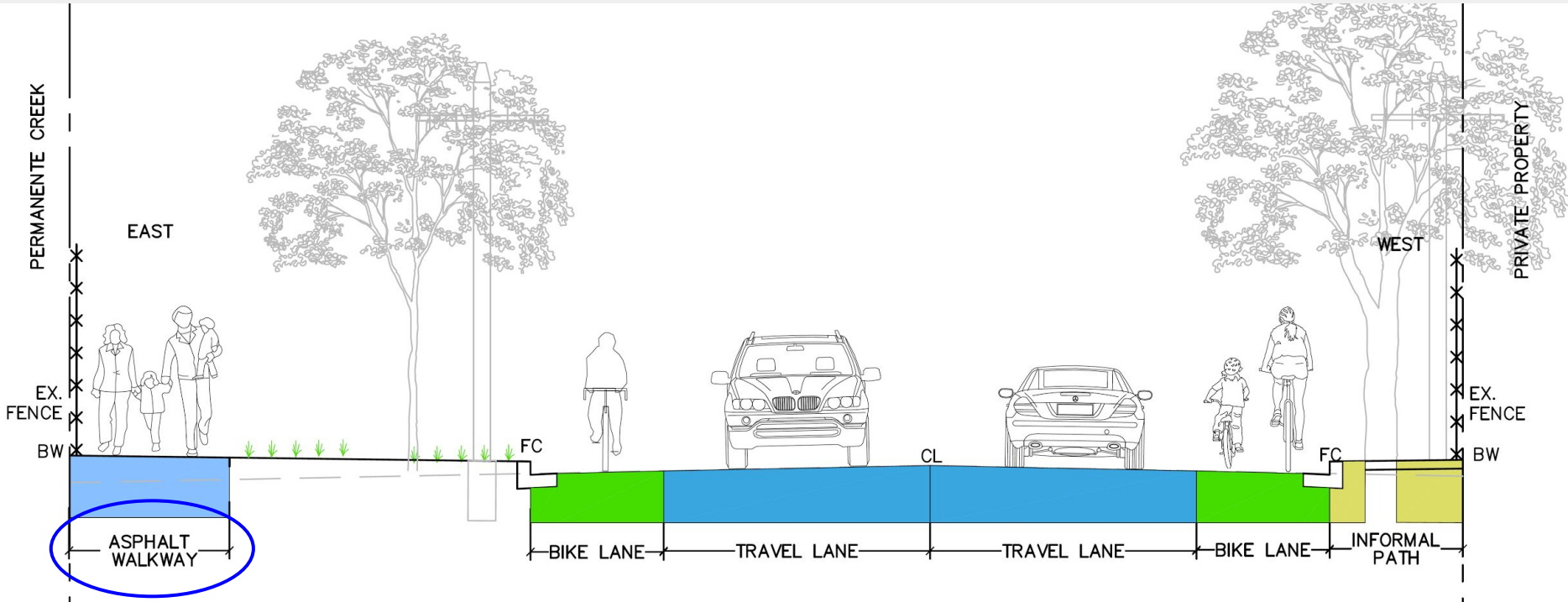
Miramonte Avenue south of Stanley Ave

Typical Section with Parking (East)



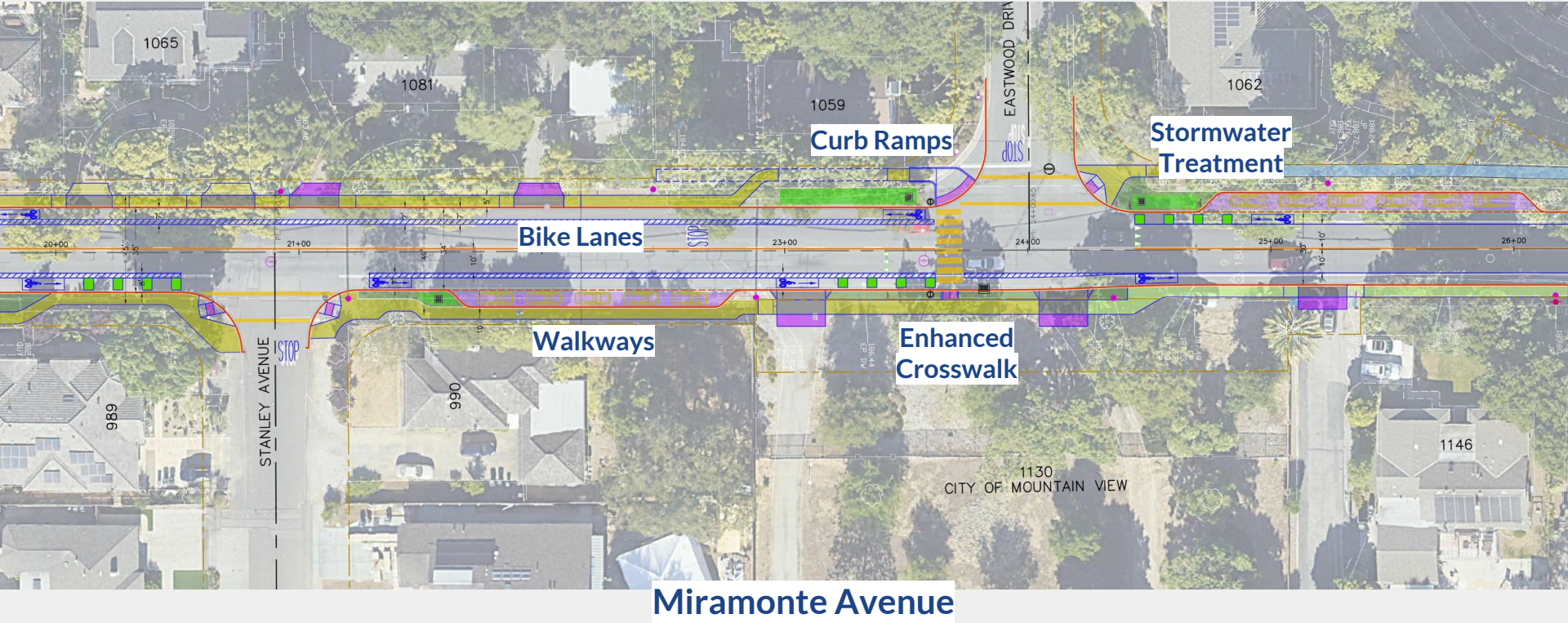
Miramonte Avenue (south of Eastwood)

Typical Section at Permanente Creek



Miramonte Avenue north of Berry Avenue

Layout

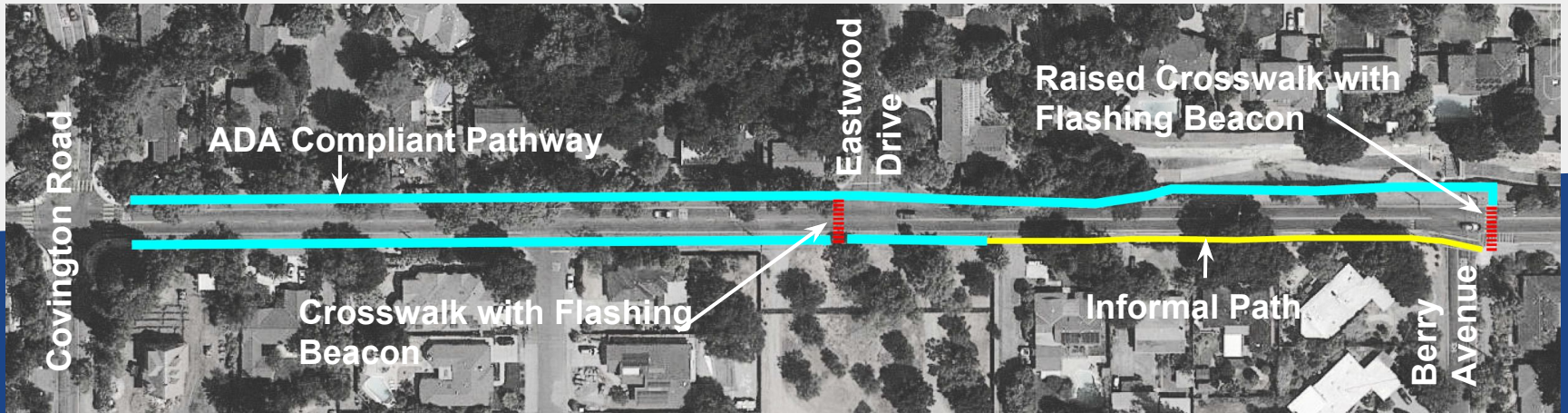


Parking

Phase 1 Segment

- Daytime parking counts from 2016 = **3 Parked cars**
 - Evening parking counts from Jan 10, 2018 = **0 Parked cars**
 - Evening parking from Jan 11, 2018 = **0 Parked cars**
-
- Allowable Space for Parking on Phase 1 plans = **11 Parking Spaces**

6. Crosswalks with Flashing Beacons



Miramonte | Berry Crosswalk Flashing Beacon



Rectangular Rapid Flashing Beacon
(disapproved by FHWA)



LED Blinking Sign
(Alternative to RRFB)



Flashing LED Beacon
(Alternative to RRFB)

7. Key Comments from Community Mtg

- Supportive of DG Pathway and Bike Lanes
- Maintain rural edge remove curb & gutter
- Some residents mentioned Bike Lanes and Pathway are not worth the lost Parking in front of each house
- Improve stopping sight distance at Berry/Miramonte Intersection
- Remove drainage inlets and stormwater treatment areas
- No impacts to frontage landscaping & fences
- Add flashing beacon and raised crosswalk at Eastwood

8. Next Steps

- **Incorporate Community feedback where possible & finalize design**
- **Phase 1 Construction**