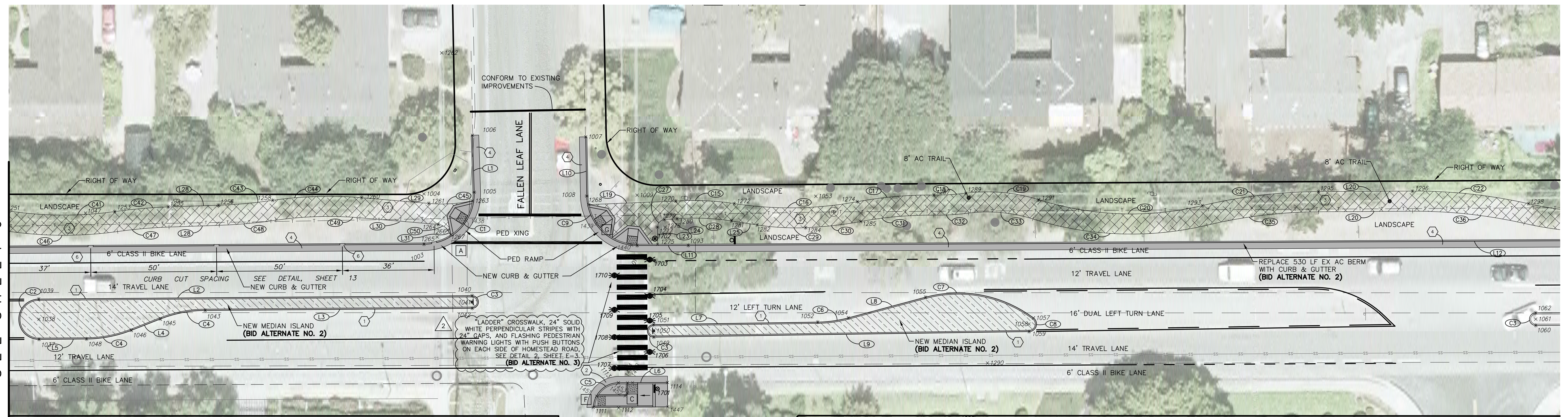


MATCHLINE
SEE SHEET 6



MATCHLINE
SEE BELOW

HOMESTEAD ROAD PROJECT LAYOUT

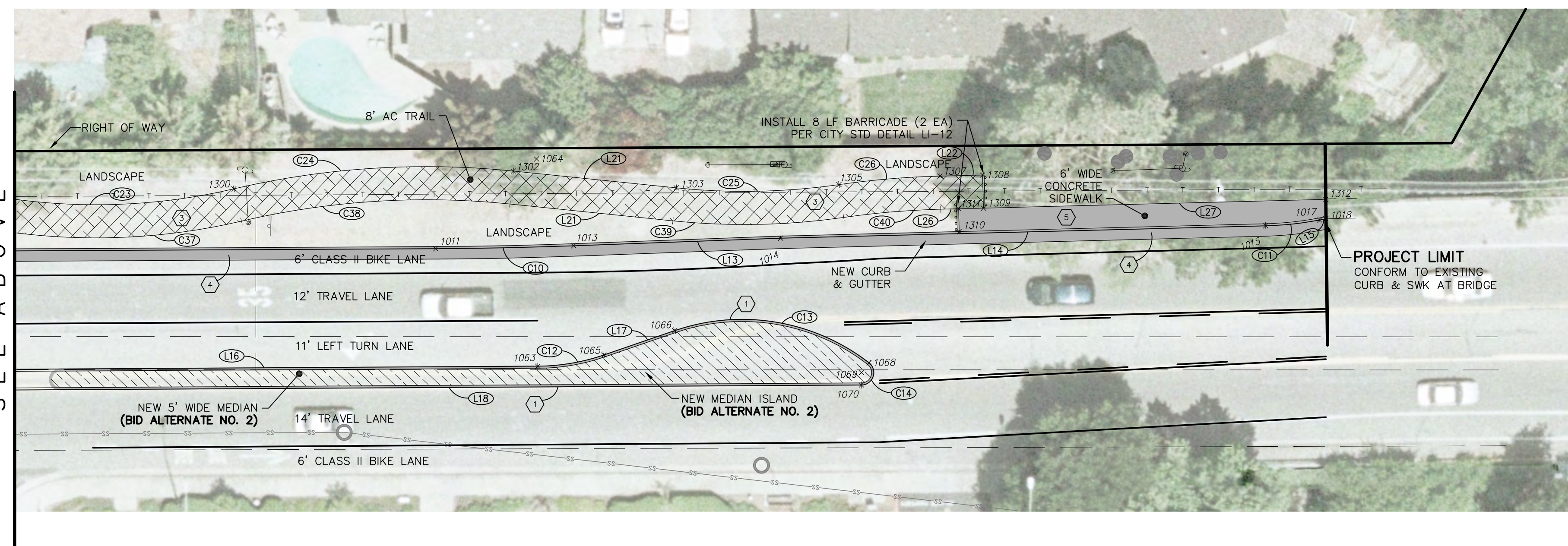
PLAN VIEW 1

1"=20'

- A CURB RAMP CASE
SEE CALTRANS DETAILS, SHEET 14
- C11 CURVE TABLE NUMBER
- L9 LINE TABLE NUMBER
- 1060 COORDINATE TABLE NUMBER

SEE SHEET 8 FOR POINT COORDINATES.

MATCHLINE
SEE ABOVE



HOMESTEAD ROAD PROJECT LAYOUT

PLAN VIEW 2

1"=20'

LEGEND

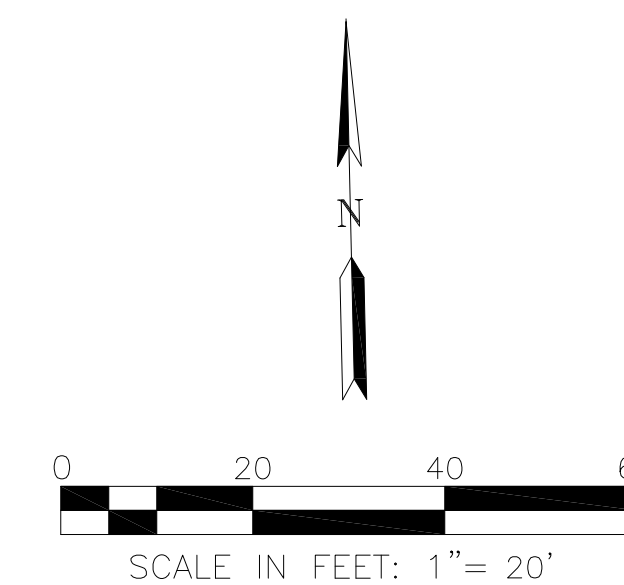
- EXISTING MEDIAN ISLAND TO REMAIN AND BE LANDSCAPED
- NEW AC TRAIL
- NEW MEDIAN ISLAND TO BE CONSTRUCTED AND LANDSCAPED
- NEW CONCRETE

CURVE TABLE				
CURVE	DESC	RADIUS	DELTA	LENGTH
C1	FC	20.00'	91°42'45"	32.01'
C2	FC	8.00'	180°00'00"	25.13'
C3	FC	2.50'	180°00'00"	7.85'
C4	FC	50.00'	205°41'31"	18.24'
C5	FC	10.00'	81°19'44"	14.19'
C6	FC	50.00'	14°08'08"	12.34'
C7	FC	50.00'	51°46'26"	45.18'
C8	FC	3.00'	142°21'42"	7.45'
C9	FC	20.00'	89°03'01"	31.08'
C10	FC	1060.00'	147°54'	33.27'
C11	FC	80.00'	9°22'23"	13.09'
C12	FC	50.00'	18°37'53"	16.25'
C13	FC	50.00'	56°42'45"	49.49'
C14	FC	3.00'	141°54'49"	7.43'
C15	TRAIL	104.00'	12°49'25"	23.28'
C16	TRAIL	146.00'	19°16'03"	49.10'
C17	TRAIL	158.00'	11°07'07"	30.66'
C18	TRAIL	92.00'	7°33'42"	12.68'
C19	TRAIL	68.00'	24°45'58"	29.39'
C20	TRAIL	122.00'	30°53'04"	65.76'
C21	TRAIL	204.00'	13°04'16"	46.54'
C22	TRAIL	204.00'	13°02'53"	46.46'
C23	TRAIL	146.00'	25°53'35"	65.98'
C24	TRAIL	204.00'	19°03'40"	67.87'
C25	TRAIL	160.00'	14°05'18"	39.34'
C26	TRAIL	208.00'	6°43'57"	24.44'
C27	TRAIL	3.00'	86°02'19"	4.50'
C28	TRAIL	97.00'	12°49'25"	21.71'
C29	TRAIL	100.00'	11°02'37"	19.27'
C30	TRAIL	154.00'	8°13'26"	22.10'
C31	TRAIL	150.00'	11°07'07"	29.11'
C32	TRAIL	100.00'	7°53'42"	13.78'
C33	TRAIL	60.00'	24°45'58"	25.94'
C34	TRAIL	130.00'	30°53'04"	70.07'
C35	TRAIL	196.00'	13°04'16"	44.71'
C36	TRAIL	196.00'	13°02'53"	44.64'
C37	TRAIL	154.00'	25°53'35"	69.60'
C38	TRAIL	196.00'	19°03'40"	65.20'
C39	TRAIL	168.00'	14°05'18"	41.31'
C40	TRAIL	200.00'	6°43'57"	23.50'
C41	TRAIL	146.00'	17°09'48"	43.74'
C42	TRAIL	204.00'	6°00'07"	21.37'
C43	TRAIL	196.00'	6°19'21"	21.63'
C44	TRAIL	154.00'	13°10'22"	35.41'
C45	TRAIL	60.00'	16°39'18"	17.44'
C46	TRAIL	154.00'	17°09'48"	46.13'
C47	TRAIL	196.00'	6°00'07"	20.53'
C48	TRAIL	204.00'	6°19'21"	22.51'
C49	TRAIL	146.00'	13°10'22"	33.57'
C50	TRAIL	5.00'	51°49'50"	4.52'

LINE TABLE		
NO.	DESC	DIST
L1	FC	N00°29'48"W 22.66'
L2	FC	N89°07'59"W 172.17'
L3	FC	N89°07'59"W 106.07'
L4	FC	N89°57'48"E 12.38'
L5	FC	N89°07'59"W 18.85'
L6	FC	N89°00'33"W 19.49'
L7	FC	N89°32'13"W 65.16'
L8	FC	N76°19'38"E 31.75'
L9	FC	N89°32'13"W 149.13'
L10	FC	N00°15'59"E 23.52'
L11	FC	N88°57'02"E 20.31'
L12	FC	N88°59'59"W 447.87'
L13	FC	N89°12'27"E 49.95'
L14	FC	N89°50'50"E 117.06'
L15	FC	N80°28'27"E 1.59'
L16	FC	N89°01'37"W 135.84'
L17	FC	N72°20'50"E 18.06'
L18	FC	N89°01'37"W 213.89'
L19	TRAIL	N89°03'15"E 34.55'
L20	TRAIL	N89°00'47"W 37.35'
L21	TRAIL	N82°47'49"W 39.51'
L22	TRAIL	N89°50'50"E 10.31'
L23	TRAIL	N01°12'58"E 6.77'
L24	TRAIL	N87°15'17"E 4.98'
L25	TRAIL	N79°55'18"W 10.34'
L26	TRAIL	N89°50'50"E 4.31'
L27	TRAIL	N89°50'50"E 88.60'
L28	TRAIL	N89°20'42"E 19.96'
L29	TRAIL	N83°48'17"W 26.80'
L30	TRAIL	N83°48'17"W 31.23'
L31	TRAIL	N31°58'27"W 2.29'

CONSTRUCTION NOTES:

- ① CONSTRUCT VERTICAL CURB, PER CITY STD. DETAIL SU-7.
- ② CONSTRUCT CURB AND GUTTER PER CITY OF CUPERTINO STANDARD DETAIL A2-6.
- ③ CONSTRUCT 8' WIDE AC TRAIL, PER DETAIL 1, SHEET 14.
- ④ CONSTRUCT CURB & GUTTER PER CITY STD. PLAN SU-6.
- ⑤ CONSTRUCT CONCRETE SIDEWALK, PER CITY STD. DETAIL SU-8.
- ⑥ CURB CUT PER DETAIL 3, SHEET 14.

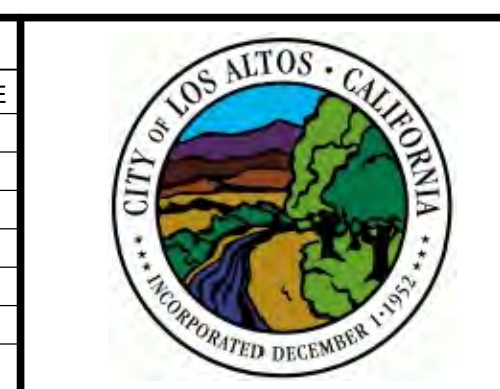


DRAWN LW	DESIGNED JS	HORIZONTAL SCALE 1"=20'	ENGINEER OF RECORD
CHECKED LS	DATE CHECKED NOV. 28, 2012	VERTICAL SCALE	
APPROVED		CONTRACT NO.	
ENGINEER	DATE		

PREPARED BY:

RUGGERI-JEN JEN-AZAR
ENGINEERS • PLANNERS • SURVEYORS
8055 CAMINO ARROYO GILROY, CA 95020
PHONE: (408) 848-0300 FAX: (408) 848-0302

REVISIONS					
NO.	DATE	BY	DESCRIPTION	APPR.	DATE
2	2/04/13		ADDENDUM #2, FALLEN LEAF CROSSWALK		



CITY OF LOS ALTOS
HOMESTEAD ROAD SAFETY IMPROVEMENTS
PROJECT 12-19

PROJECT LAYOUT EASTERN END

PREPARED FOR: CITY OF LOS ALTOS

DRAWING NO.	7
SHT 7 OF 25	

FACE OF CURB

COORDINATE TABLE			
PT#	NORTHING	EASTING	DESC
993	1949189.7181	6105953.8174	END
994	1949380.6530	6105946.7404	BC
995	1949359.4221	6105967.9359	RP
996	1949338.1155	6105946.8164	EC
997	1949290.0336	6105995.9173	BC
998	1949529.3849	6106230.3015	RP
999	1949129.1907	6106207.0801	EC,HP
1000	1949194.1023	6106223.7448	END
1001	1949692.8996	6106257.4036	RP
1002	1949192.9613	6106249.5465	EC
1003	1949186.3503	6106670.2004	BC
1004	1949206.3458	6106670.6248	RP
1005	1949206.5191	6106690.6241	EC
1006	1949229.7600	6106690.4277	END
1007	1949227.5227	6106735.3849	END
1008	1949203.9986	6106735.2756	BC
1009	1949203.9056	6106755.2753	RP
1010	1949183.9101	6106754.8509	EC
1011	1949175.6178	6107222.9590	BC
1012	1950235.4545	6107241.5645	RP
1013	1949229.1907	6106207.0801	EC,HP
1014	1949176.2468	6107306.1689	BERM
1015	1949176.5589	6107423.2240	BC
1016	1949256.5587	6107423.0107	RP
1017	1949177.6617	6107436.2499	EC
1018	1949177.9266	6107437.7790	BERM
1019	1949318.9882	6105913.5377	BC
1020	1949321.4874	6105915.9881	RP
1021	1949323.9865	6105918.4384	EC
1022	1949268.4780	6105975.0514	BC
1023	1949228.3878	6106229.8904	RP
1024	1949222.0787	6106033.2416	EC
1025	1949211.3872	6106048.9416	BC
1026	1949208.9076	6106047.2531	RP
1027	1949206.3031	6106045.7642	PCC
1028	1949263.4798	6105970.1506	EC
1029	1949175.9300	6106117.3137	PCC
1030	1949178.7877	6106118.2265	RP
1031	1949181.6455	6106119.1393	PRC
1032	1949165.1873	6106205.7780	BC
1033	1949163.2176	6106235.4470	BC
1034	1949160.2242	6106235.2483	RP
1035	1949157.2308	6106235.0495	EC
1036	1949159.2005	6106205.3805	BC
1037	1949152.0743	6106516.4474	BC
1038	1949160.0734	6106516.5685	RP
1039	1949168.0725	6106516.6895	EC
1040	1949165.4678	6106588.8409	RP
1041	1949162.9691	6106688.8031	RP
1042	1949160.4683	6106688.7653	EC
1043	1949162.0730	6106582.7084	BC
1044	1949112.0787	6106581.9519	RP
1045	1949159.0524	6106564.8209	EC
1046	1949154.8097	6106553.1872	BC
1047	1949201.7834	6106536.0561	RP
1048	1949151.7891	6106535.2997	EC
1049	1949147.3738	6106760.6058	BC
1050	1949149.8737	6106760.6260	RP
1051	1949152.3736	6106760.6462	EC
1052	1949151.8467	6106825.8596	BC
1053	1949201.8451	6106826.2636	RP
1054	1949153.2820	6106838.0824	EC

COORDINATE TABLE			
PT#	NORTHING	EASTING	DESC
1055	1949160.7666	6106688.9312	BC
1056	1949112.1835	6106880.7500	RP
1057	1949151.5296	6106911.6026	PCC
1058	1949149.1688	6106909.7515	RP
1059	1949146.1689	6106909.7272	EC
1060	1949144.0140	6107111.0122	BC
1061	1949146.5136	6107111.0546	RP
1062	1949149.0133	6107111.0971	EC
1063	1949146.7063	6107246.9166	BC
1064	1949196.6991	6107247.7657	RP
1065	1949149.0535	6107262.9281	RP
1066	1949154.5316	6107280.1421	BC
1067	1949106.8860	6107295.3045	RP
1068	1949145.7106	6107326.8109	PCC
1069	1949143.3811	6107324.9205	RP
1070	1949140.3815	6107324.8696	EC
1071	1949340.2237	6105850.4327	END
1072	1949300.0611	6105897.6659	END
1073	1949255.4908	6105950.0827	END
1074	1949249.9131	6105956.8486	BC
1075	1949193.9404	6106101.8245	PCC
1076	1949168.6696	6106022.9415	RP
1077	1949154.1065	6106043.2618	PCC
1078	1949205.3687	6105971.7343	RP
1079	1949143.3783	6106034.1938	EC
1080	1949128.9314	6106020.0288	BC
1081	1949131.7318	6106017.1727	RP
1082	1949128.8757	6106014.3723	EC
1083	1949133.3180	6106009.8415	END
1084	1949093.2919	6106049.4360	END
1085	1949097.4585	6106045.1885	BC
1086	1949100.3146	6106047.9889	RP
1087	1949103.1151	6106045.1327	EC
1088	1949118.0186	6106059.7454	RP
1089	1949148.7058	6106082.0308	PRC
1090	1949139.5667	6106099.8206	RP
1091	1949158.5336	6106106.1654	PRC
1092	1949139.2444	6106204.0557	END
1093	1949183.4790	6106775.1581	ANG PT
1094	1949572.5516	6106264.6058	BC
1095	1949571.4902	6106261.5458	RP
1096	1949570.5943	6106260.3428	EC
1097	1949482.3646	6105746.0489	BC
1098	1949487.1429	6105752.4652	RP
1099	1949479.4345	6105754.6056	EC
1100	1949483.0649	6105762.1931	END
1101	1949505.4842	6105749.8132	END
1102	1949490.3376	6105740.1113	END
1103	1949502.4394	6105752.8523	END
1104	1949495.3476	6105759.9063	END
1105	1949137.8559	6106282.1467	END
1106	1949137.8030	6106285.1463	DWY
1107	1949137.1327	6106323.1404	DWY
1108	1949137.0269	6106329.1394	END
1109	1949144.4723	6106161.2690	DWY
1110	1949140.4830	6106189.5183	DWY
1111	1949120.0178	6106735.9229	BC
1112	1949119.5941	6106745.9946	RP
1113	1949129.5927	6106746.1675	EC
1114	1949129.2557	6106765.6517	END

COORDINATE TABLE			
PT#	NORTHING	EASTING	DESC
1204	1949339.5103	6105954.5425	END
1205	1949335.2490	6105950.4186	END
1206	1949320.4950	6105948.2575	RP
1207	1949334.6993	6105962.3371	EC
1208	1949324.7420	6105972.3826	BC
1209	1949392.9227	6106039.9651	RP
1210	1949316.3770	6105982.0276	EC
1211	1949315.1825	6105972.9925	BC
1212	1949303.7535	6105998.7055	BC
1213	1949220.8290	6105935.9398	RP
1214	1949294.0195	6106009.8259	PRC
1215	1949229.1403	6106146.2310	RP
1216	1949283.9700	6106020.5744	DWY
1217	1949290.4931	6106024.3440	DWY
1218	1949280.8211	6106041.9209	DWY
1219	1949271.5780	6106036.5127	DWY
1220	1949226.7452	6106043.8015	PRC
1221	1947568.3626	6104972.5589	RP
1222	1949256.9479	6106059.1792	PRC
1223	1949508.3896	6106202.9818	RP
1224	1949193.9404	6106101.8245	PCC
1225	1949223.9703	6106105.4095	PRC
1226	1949214.7060	6106101.6450	RP
1227	1949216.7151	6106111.4411	EC
1228	1949210.4032	6106129.5993	BC
1229	1949202.9233	6106136.2364	RP
1230	1949212.5593	6106138.9097	EC
1231	1949280.8128	6106121.7504	RP
1232	1949230.4007	6106115.5343	PRC
1233	1949180.7886	6106109.3181	RP
1234	1949203.8690	6106134.6969	PRC
1235	1949266.9494	6106160.0756	RP
1236	1949218.4683	6106147.8454	PCC
1237	1949216.2914	6106157.0912	BC
1238	1949401.7845	6106188.9727	RP
1239	1949212.7330	6106218.4328	PRC
1240	1949009.7410	6106238.6872	RP
1241	1949213.7107	6106242.2003	EC
1242	1949213.2628	6106268.2006	BC
1243	1949009.2931	6106264.6869	RP
1244	1949217.5083	6106291.6128	PRC
1245	1949701.1339	6106357.6075	RP
1246	1949207.9041	6106385.3502	PRC
1247	1949004.2184	6106396.6992	RP
1248	1949208.1881	6106400.1828	EC
1249	1949206.9777	6106470.4473	BC
1250	1949003.0080	6106466.9336	RP
1251	1949203.9879	6106504.1300	PRC
1252	1949347.1401	6106530.7844	RP
1253	1949202.1245	6106547.6796	PRC
1254	1948999.4999	6106571.3285	RP
1255	1949203.4865	6106568.8963	DWY
1256	1949203.7147	6106588.9539	BC
1257	1949399.7019	6106586.7131	END
1258	1949205.1536	6106610.5237	PRC

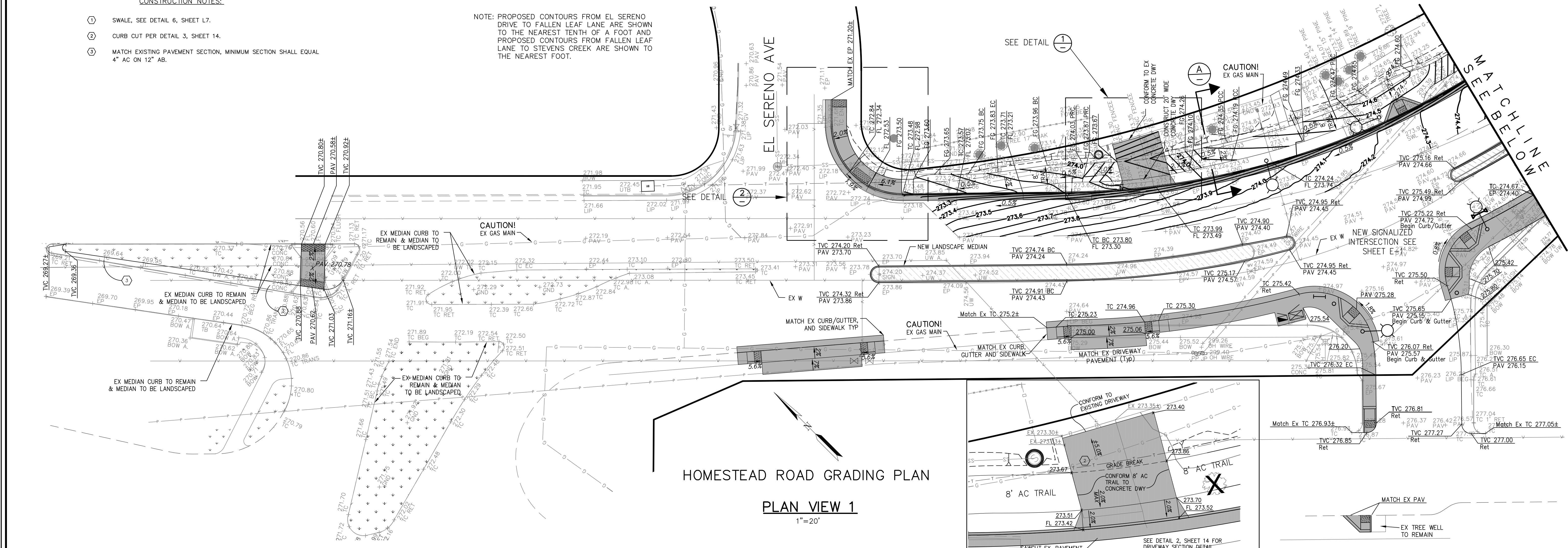
TRAIL

COORDINATE TABLE			
PT#	NORTHING	EASTING	DESC
1259	1949052.2942	6106629.2320	RP
1260	1949205.3948	6106645.8511	EC
1261	1949320.4950	6105948.2575	BC
1262	1949262.1524	6106678.9682	RP
1263	1949324.7420	6105972.3826	BC
1264	1949194.0713	6106676.0355	BC
1265	1949189.1005	6106679.4959	RP
1266	1949191.7482	6106679.7373	EC
1267	1949189.8042	6106680.9508	END
1268	1949220.6009	6106736.0574	END
1269	-----	-----	-----
1270	1949201.1711	6106770.5987	BC
1271	1949097.2905	6106775.5798	RP
1272	1949199.6857	6106793.7791	PRC
1273	1949183.4329	6106801.9281	RP
1274	1949198.3067	6106842.6440	PRC
1275	1949184.2381	6106762.9561	END
1276	-----	-----	-----
1277	1949191.0076	6106763.0998	BC
1278	1949190.9439	6106766.0991	RP
1279	1949193.9404	6106763.9454	PCC
1280	1949194.1792	6106770.9340	BC
1281	1949192.7937	6106792.5541	EC
1282	1949168.6733	6106802.7386	BC
1283	1949289.4406	6106820.2379	RP
1284	1949189.4548	6106821.9228	PCC
1285	1949191.4094	6106843.9216	PRC
1286	1949203.3345	6106861.8763	RP
1287	1949201.2449	6106873.1950	PRC
1288	1949203.1928	6106876.2920	RP
1289	1949201.6910	6106885.8541	PRC
1290	1949134.0593	6106892.9217	RP
1291	1949198.4314	6106914.8361	PRC
1292	1949153.9224	6106954.1531	RP
1293	1949194.6257	6106979.6934	PRC
1294	1949195.1461	6107022.4003	PRC
1295	1949199.1158	6107025.9139	EC
1296	1949193.7107	6107062.2603	BC
1297	1948994.5027	6107059.7466	RP
1298	1949192.4128	6107109.2198	PRC
1299	1949134.0544	6107144.6270	RP
1300	1949191.1700	6107174.6279	PRC
1301	1948991.5234	6107216.5471	RP

CONSTRUCTION NOTES:

- ① SWALE, SEE DETAIL 6, SHEET L7.
- ② CURB CUT PER DETAIL 3, SHEET 14.
- ③ MATCH EXISTING PAVEMENT SECTION, MINIMUM SECTION SHALL EQUAL 4" AC ON 12" AB.

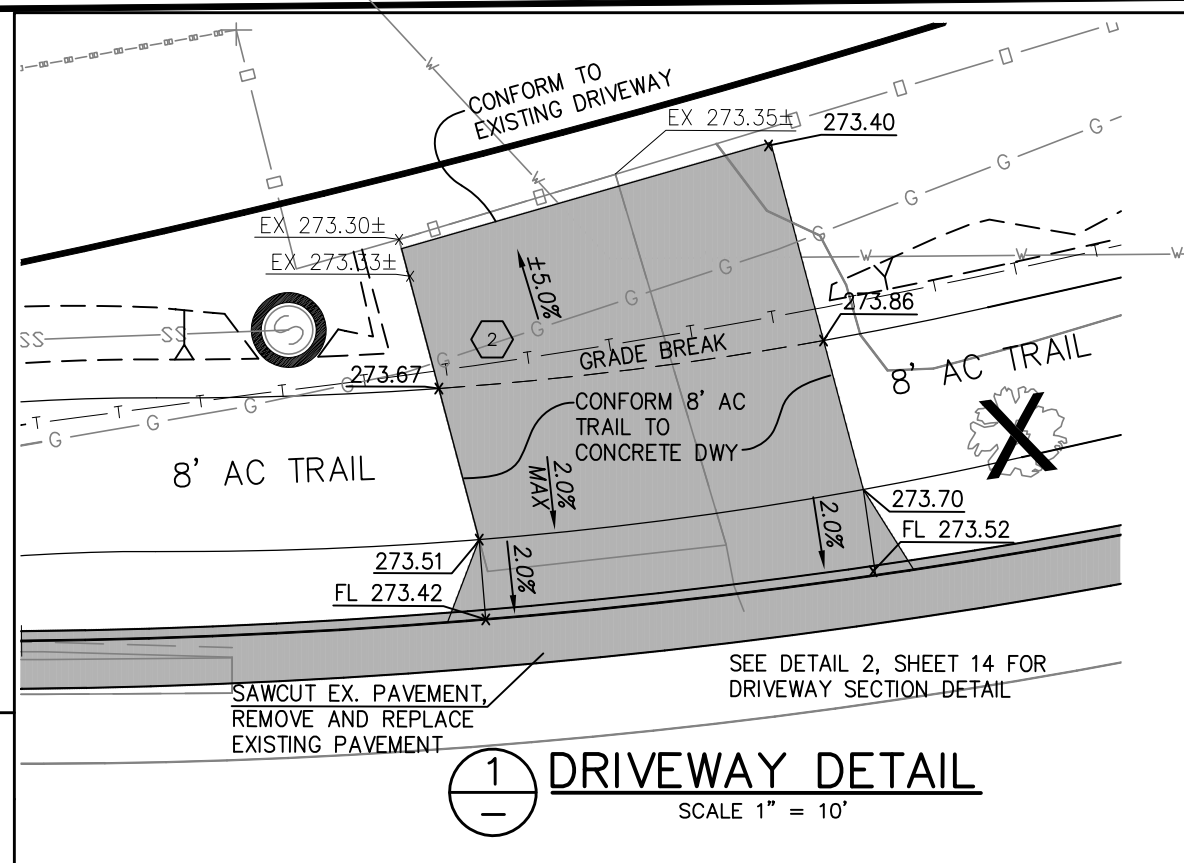
NOTE: PROPOSED CONTOURS FROM EL SERENO DRIVE TO FALLEN LEAF LANE ARE SHOWN TO THE NEAREST TENTH OF A FOOT AND PROPOSED CONTOURS FROM FALLEN LEAF LANE TO STEVENS CREEK ARE SHOWN TO THE NEAREST FOOT.



HOMESTEAD ROAD GRADING PLAN

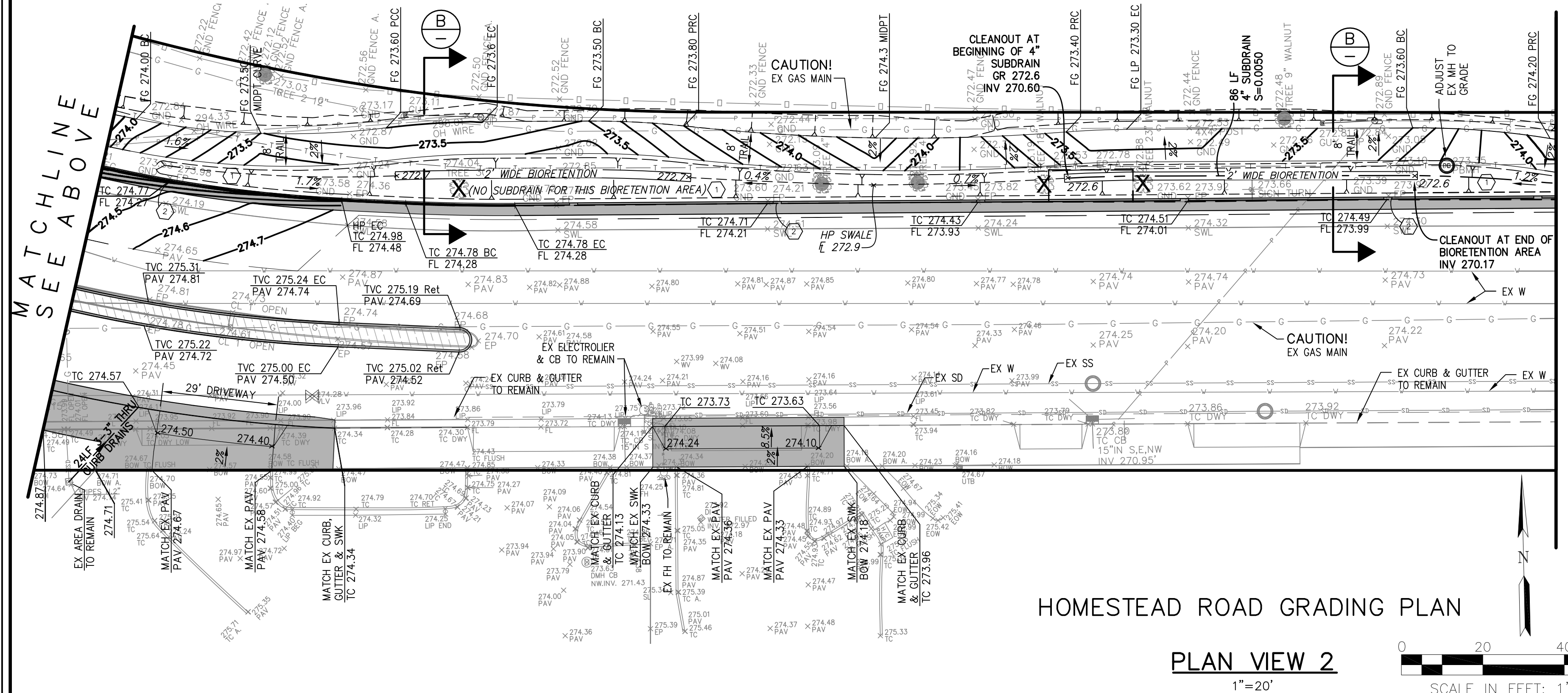
PLAN VIEW 1

1"=20'



① DRIVEWAY DETAIL

SCALE 1" = 10'

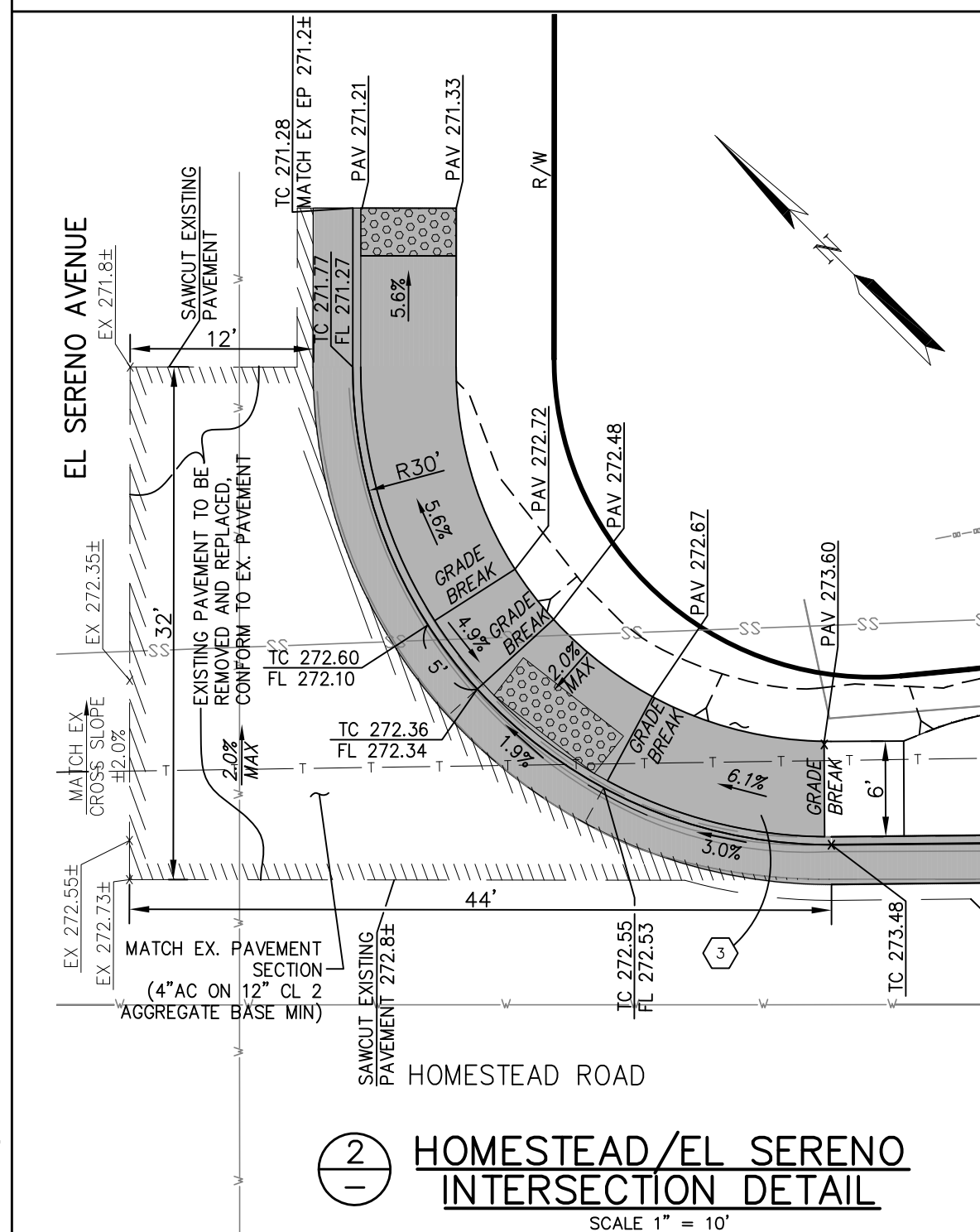


HOMESTEAD ROAD GRADING PLAN

PLAN VIEW 2

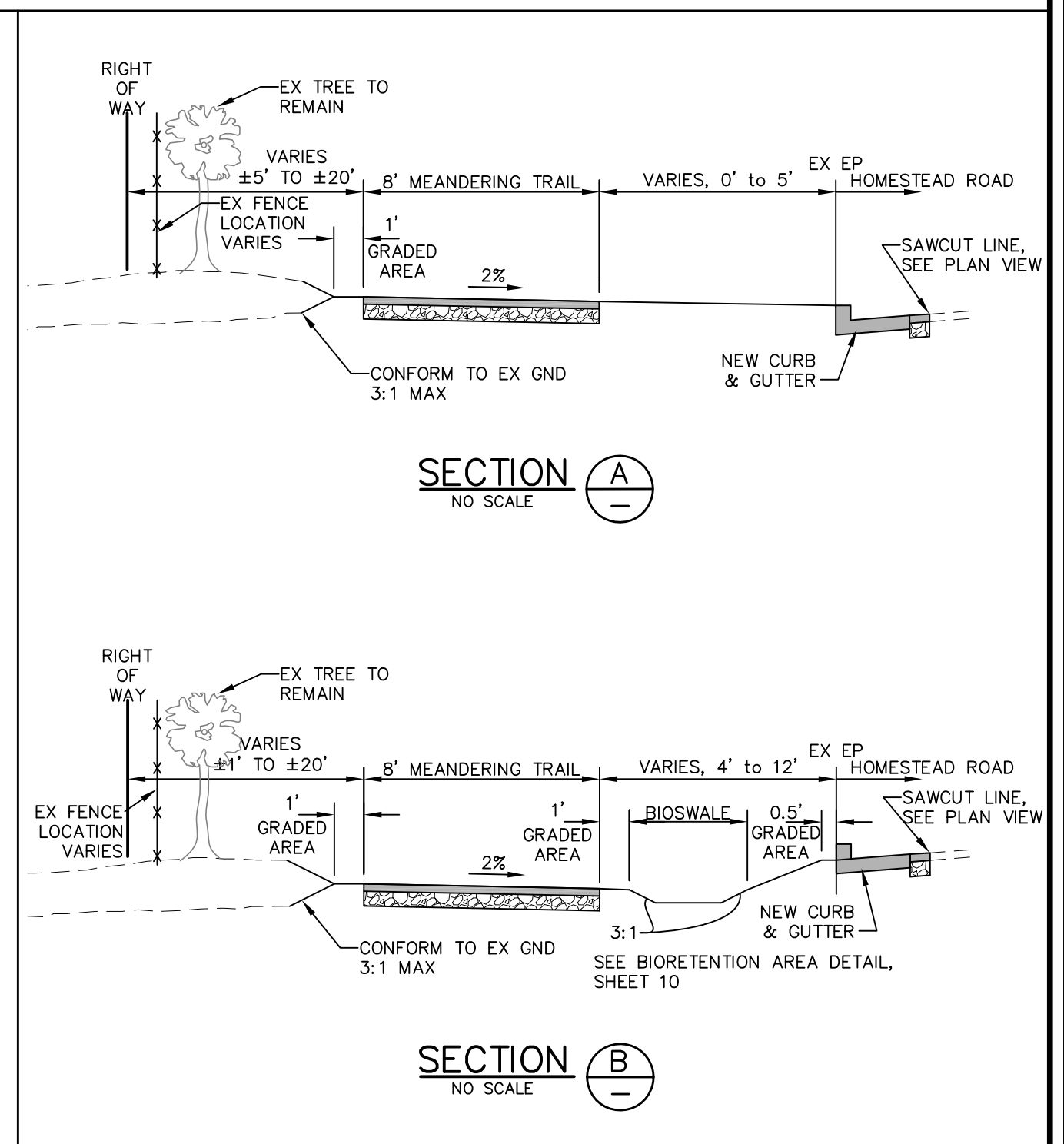
1"=20'

SCALE IN FEET: 1" = 20'



② HOMESTEAD/EL SERENO INTERSECTION DETAIL

SCALE 1" = 10'



SECTION A

NO SCALE

SECTION B

NO SCALE

DRAWN LW	DESIGNED JS	HORIZONTAL SCALE 1"=20'	ENGINEER OF RECORD
CHECKED LS	DATE CHECKED NOV. 28, 2012	VERTICAL SCALE	
APPROVED		CONTRACT NO.	
ENGINEER	DATE		

PREPARED BY:



RUGGERI-JENSEN-AZAR
ENGINEERS • PLANNERS • SURVEYORS
8055 CAMINO ARROYO GILROY, CA 95020
PHONE: (408) 848-0300 FAX: (408) 848-0302

REVISIONS				
NO.	DATE	BY	DESCRIPTION	APPR. DATE



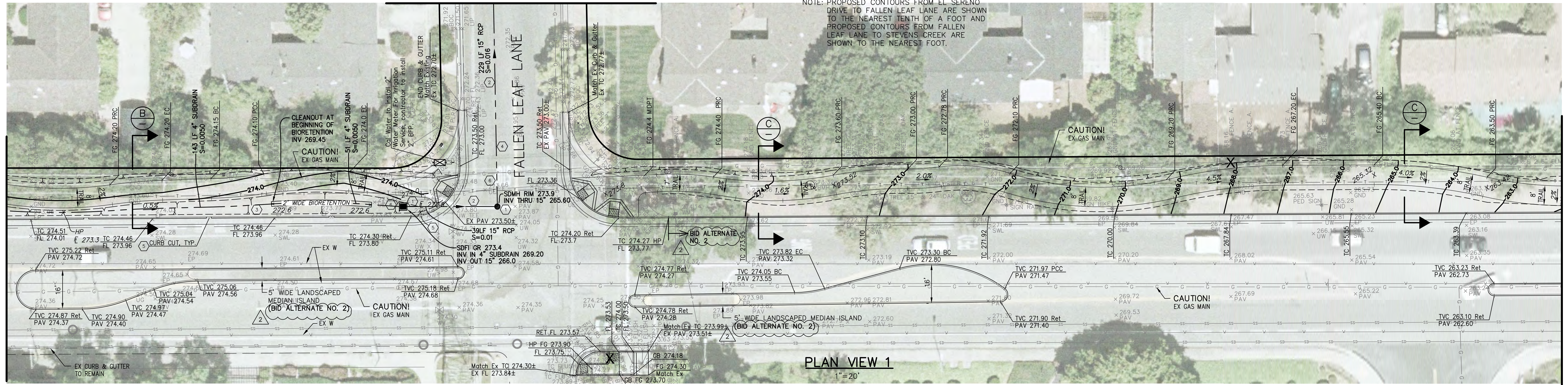
CITY OF LOS ALTOS
HOMESTEAD ROAD SAFETY IMPROVEMENTS
PROJECT 12-19
GRADING PLAN WESTERN END
PREPARED FOR: CITY OF LOS ALTOS

DRAWING NO.
9
SHT 9 OF 25

MATCHLINE
FALLEN LEAF LANE

NOTE: PROPOSED CONTOURS FROM EL SERENO DRIVE TO FALLEN LEAF LANE ARE SHOWN TO THE NEAREST TENTH OF A FOOT AND PROPOSED CONTOURS FROM FALLEN LEAF LANE TO STEVENS CREEK ARE SHOWN TO THE NEAREST FOOT.

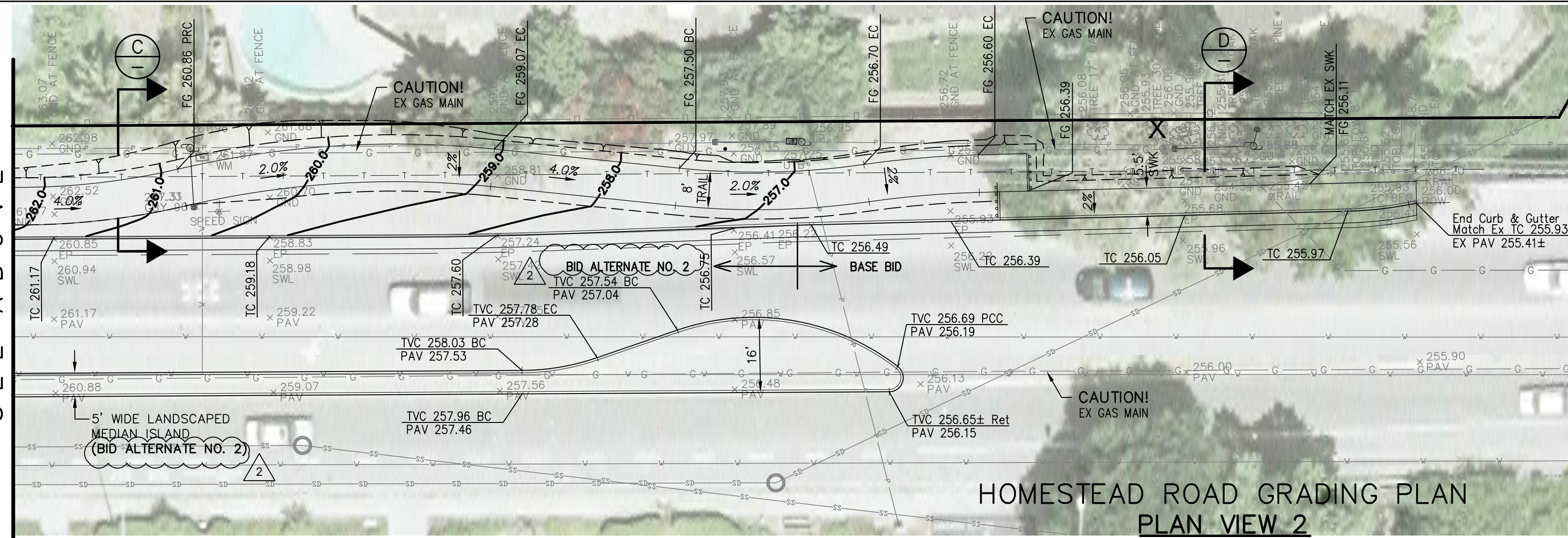
MATCHLINE
SEE SHEET 9



MATCHLINE
SEE BELOW

PLAN VIEW 1
1"=20'

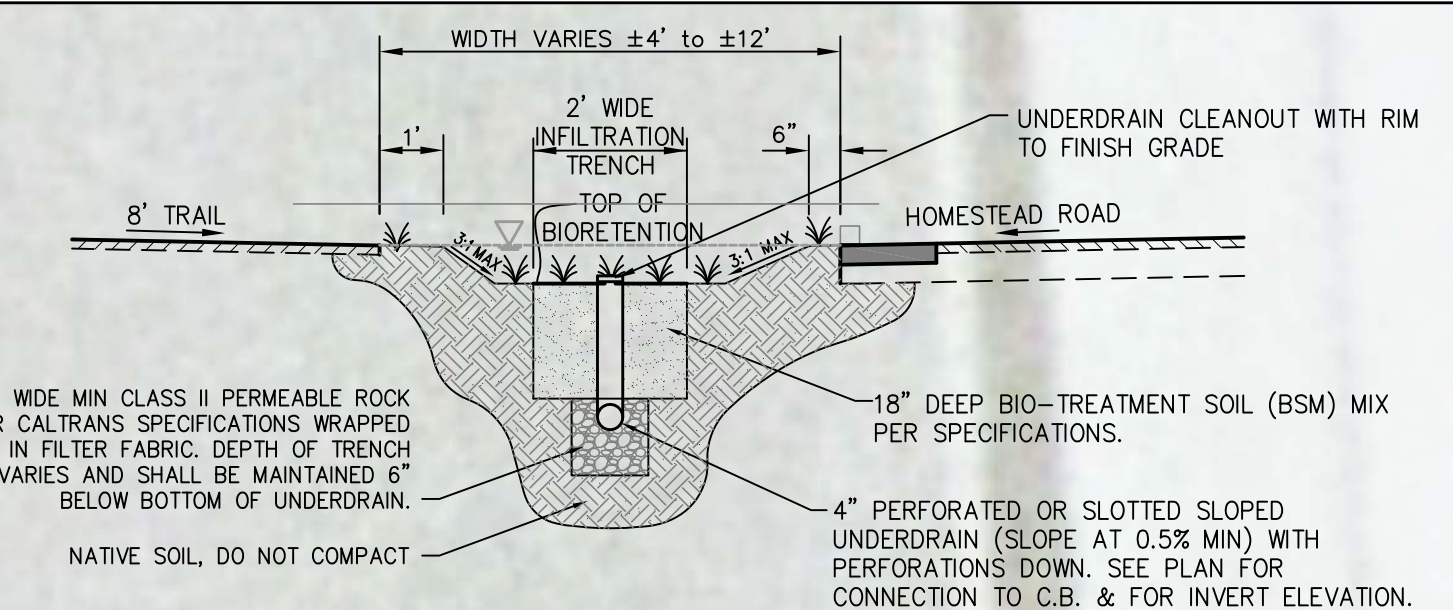
MATCHLINE
SEE ABOVE



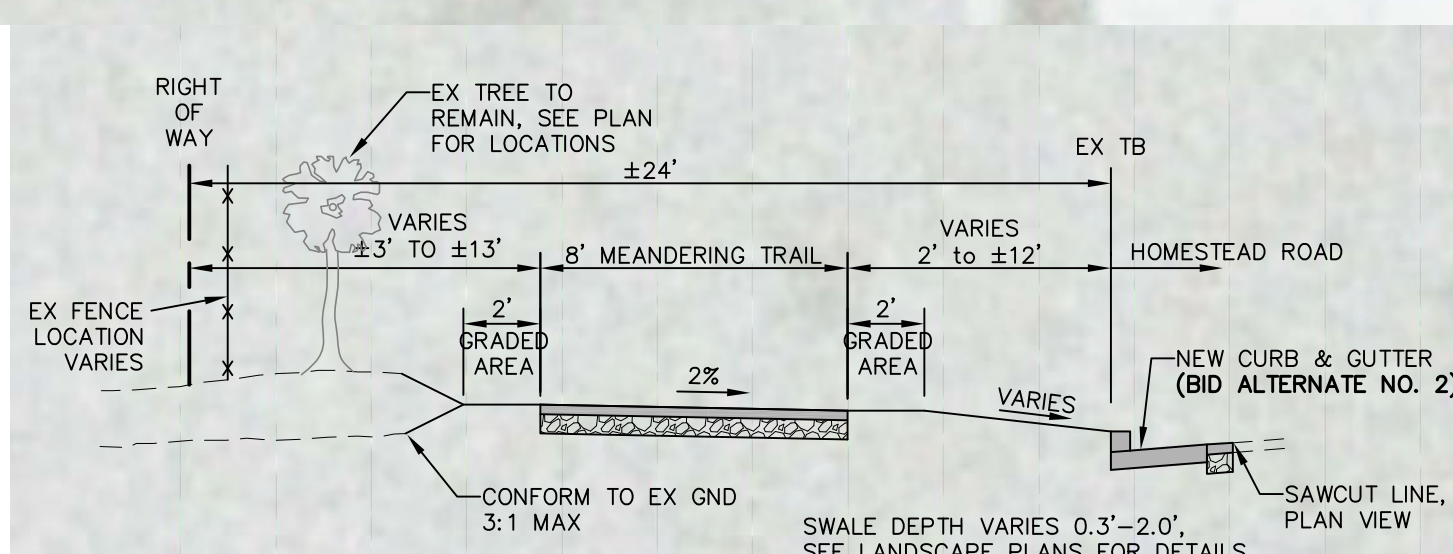
HOMESTEAD ROAD GRADING PLAN
PLAN VIEW 2
1"=20'

CONSTRUCTION NOTES:

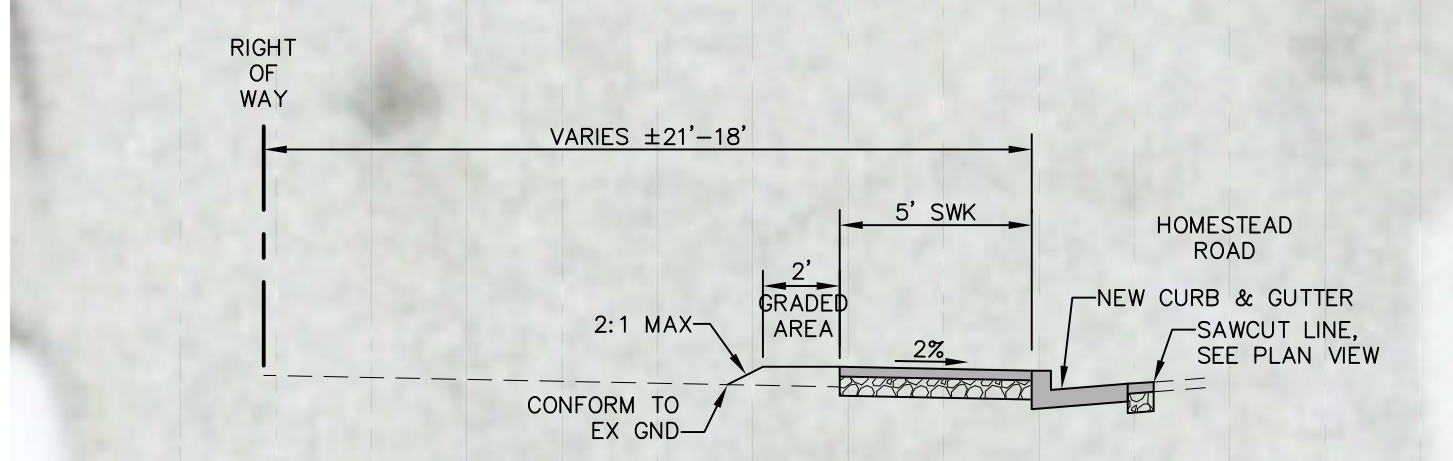
- ① STORM DRAIN MANHOLE AND INLET PER SD-1, SD-8, & SD-9
- ② STORM PIPE BEDDING PER CITY STD DETAIL SU-19.
- ③ SWALE, SEE DETAIL 6, SHEET L7.
- ④ TRENCH RESTORATION PER CITY STD. DETAIL SU-19.
- ⑤ CURB CUT PER DETAIL 3, SHEET 14.
- ⑥ POTHOLE EXISTING UTILITIES ALONG NEW STORM DRAIN ALIGNMENT AND NOTIFY ENGINEER OF ANY CONFLICTS BEFORE COMMENCEMENT OF CONSTRUCTION.



BIORETENTION AREA SECTION
NO SCALE



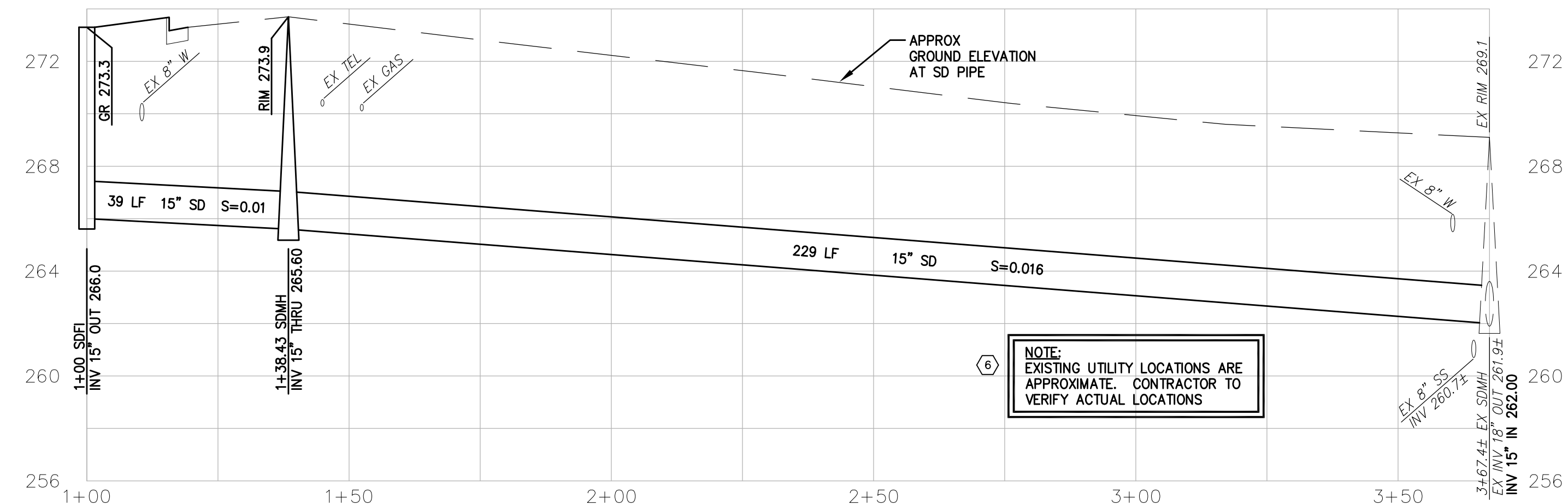
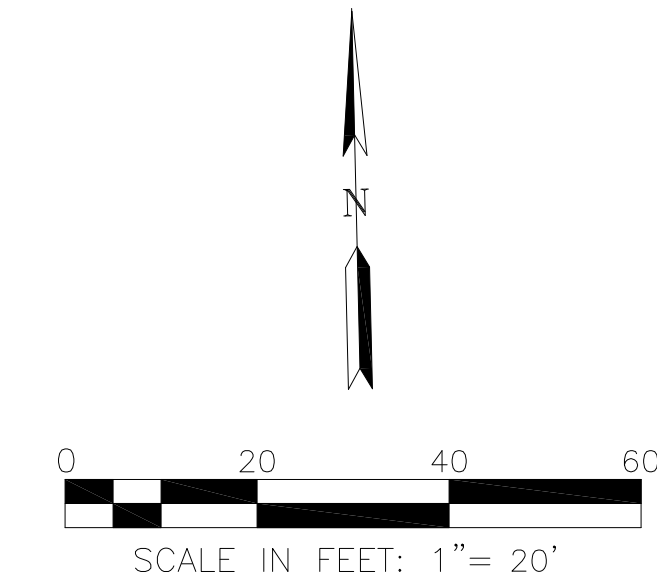
SECTION C
NO SCALE



SECTION D
NO SCALE



MATCHLINE
FALLEN LEAF LANE



FALLEN LEAF LANE STORM DRAIN LINE
PROFILE

SCALE: 1"=20' H
1"=4' V

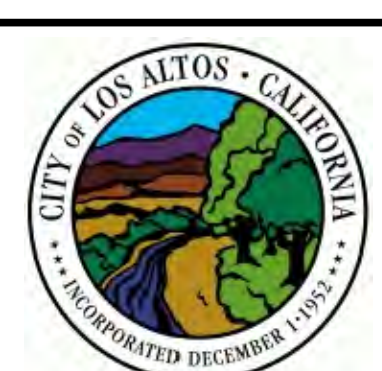
NOTE:
EXISTING UTILITY LOCATIONS ARE APPROXIMATE. CONTRACTOR TO VERIFY ACTUAL LOCATIONS

DRAWN LW	DESIGNED JS	HORIZONTAL SCALE 1"=20'	ENGINEER OF RECORD
CHECKED LS	DATE CHECKED NOV. 28, 2012	VERTICAL SCALE 1"=4'	
APPROVED		CONTRACT NO.	
ENGINEER	DATE		

PREPARED BY:

RUGGERI-JENSEN-AZAR
ENGINEERS • PLANNERS • SURVEYORS
8055 CAMINO ARROYO GILROY, CA 95020
PHONE: (408) 848-0300 FAX: (408) 848-0302

REVISIONS			
NO.	DATE	BY	DESCRIPTION
2	2/04/13		ADDENDUM #2, CHANGED BID ITEMS TO ALTERNATE NO. 2



CITY OF LOS ALTOS
HOMESTEAD ROAD SAFETY IMPROVEMENTS
PROJECT 12-19
GRADING PLAN EASTERN END
PREPARED FOR: CITY OF LOS ALTOS

DRAWING NO.
10
SHT 10 OF 25