



JARDIN DRIVE SAFETY IMPROVEMENTS

Recommended Design to Improve Jardin Dr.

Special CSC Meeting 2/22/24

By: Donya Amiri, PE, TE

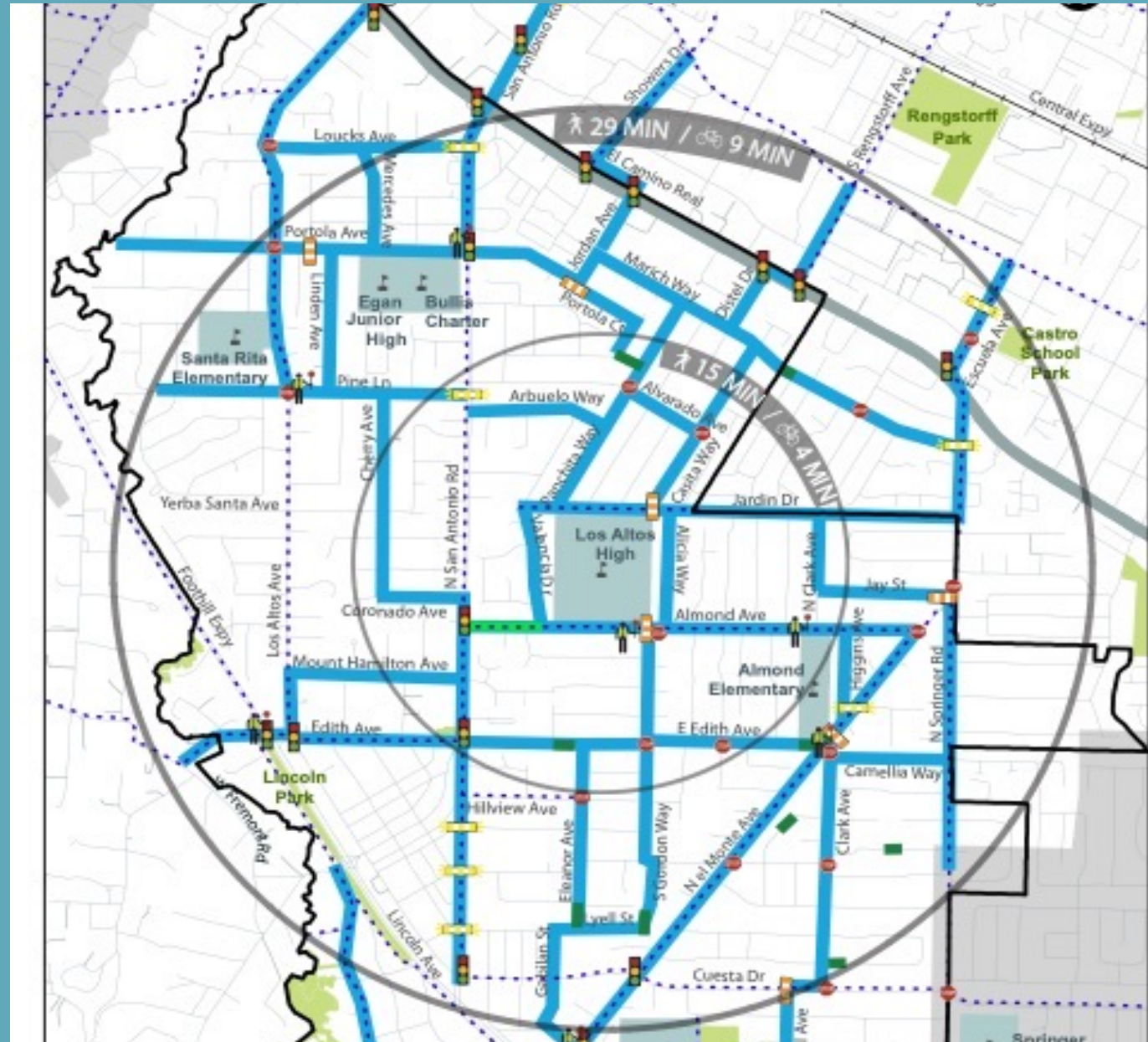


Presentation Outline

1. Big picture - Safe Routes to School Map for the area
2. Current Conditions on Jardin Dr & Problem Statement
3. Traffic Data
4. Recommended Design – Overview
5. Recommended Design Cross Sections
6. Recommended Design per side street
7. Timeline
8. Q & A



SAFE ROUTES TO SCHOOL PLAN FOR THE AREA





Current Conditions

Jardin Drive

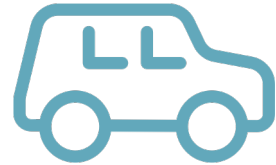
Problem Statement

The current street configuration of Jardin Drive has created the following problems:



Unsafe Pedestrian Behavior

There are sidewalk gaps on both sides of Jardin Drive. This lack of connectivity makes it difficult for pedestrians to walk and safely cross the street.



Unsafe Driver Behavior

Excessive unsafe driver behavior including stopping in the middle of the lane to drop off students, and illegal U-turns, parking, and speeding.



No shoulder or bike lane on north side

Currently there is no dedicated bike lane on the north side of Jardin Drive. The lane line is at edge of asphalt pavement. No shoulder on north side has created unsafe conditions.

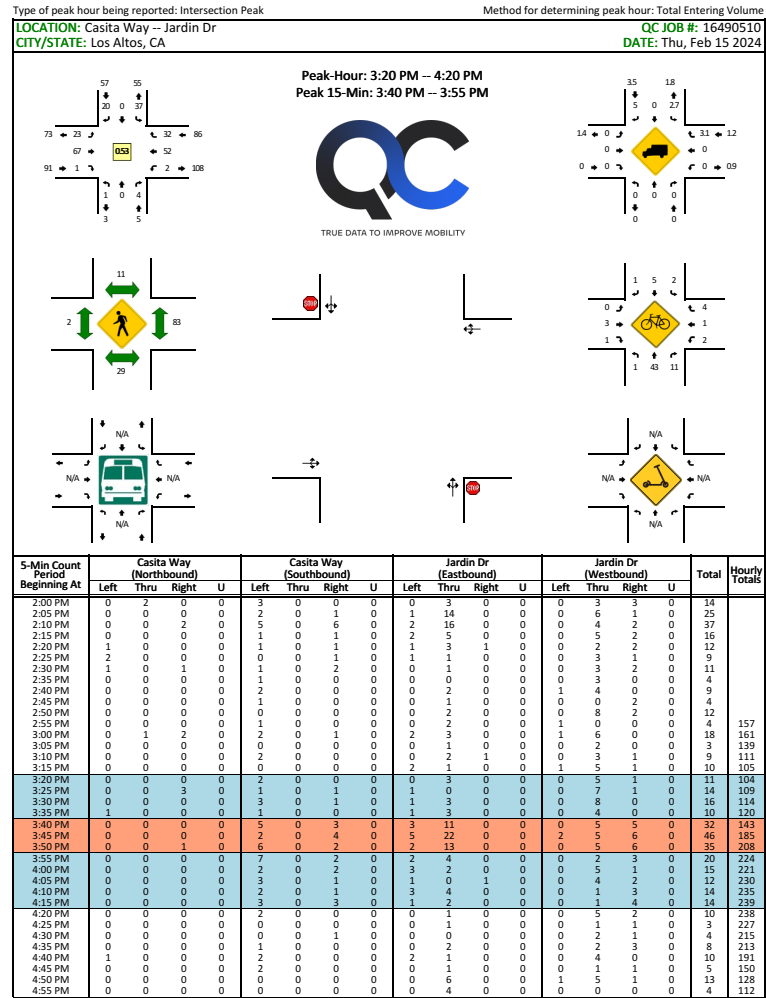
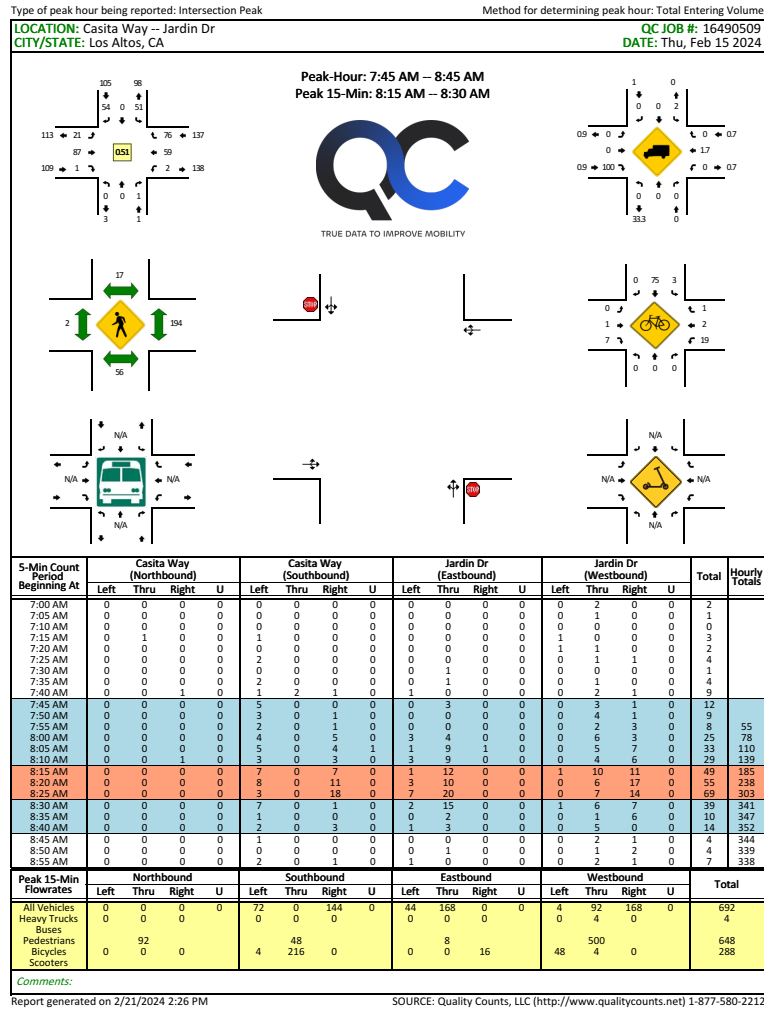


Parking Lane Location

Parking next to travel lane (on the high school side) has made it difficult to exit a parked vehicle, decreased visibility, & has taken away width from the other side of the street that can be used to buffer bike/peds

Traffic Counts

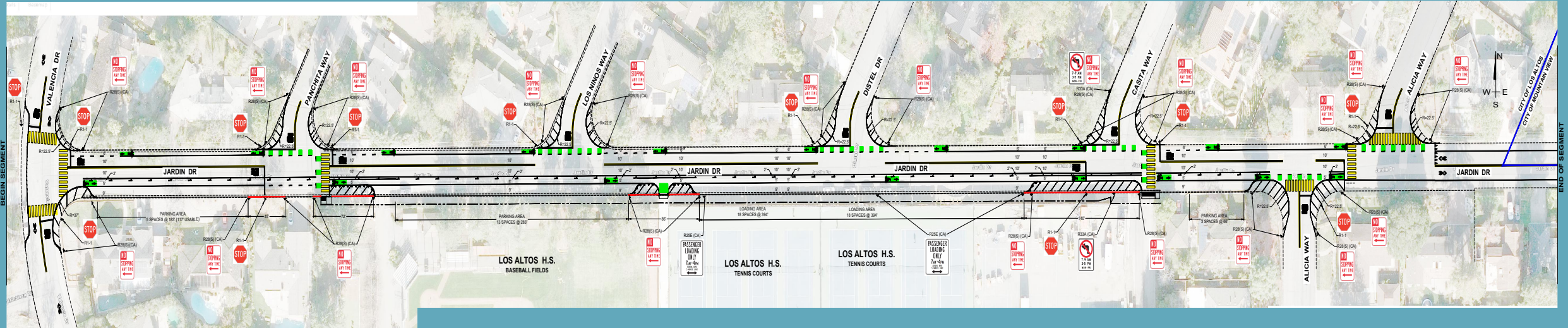
Quality Counts, LLC was hired to collect turning movement counts and traffic volumes at 9 locations



1. Valencia/Jardin
2. Panchita/Jardin
3. Los Ninos/Jardin
4. Distel/Jardin
5. Casita/Jardin
6. Alicia (s)/Jardin
7. Alicia (n)/Jardin
8. Alicia/Almond
9. Valencia/Almond



RECOMMENDED DESIGN



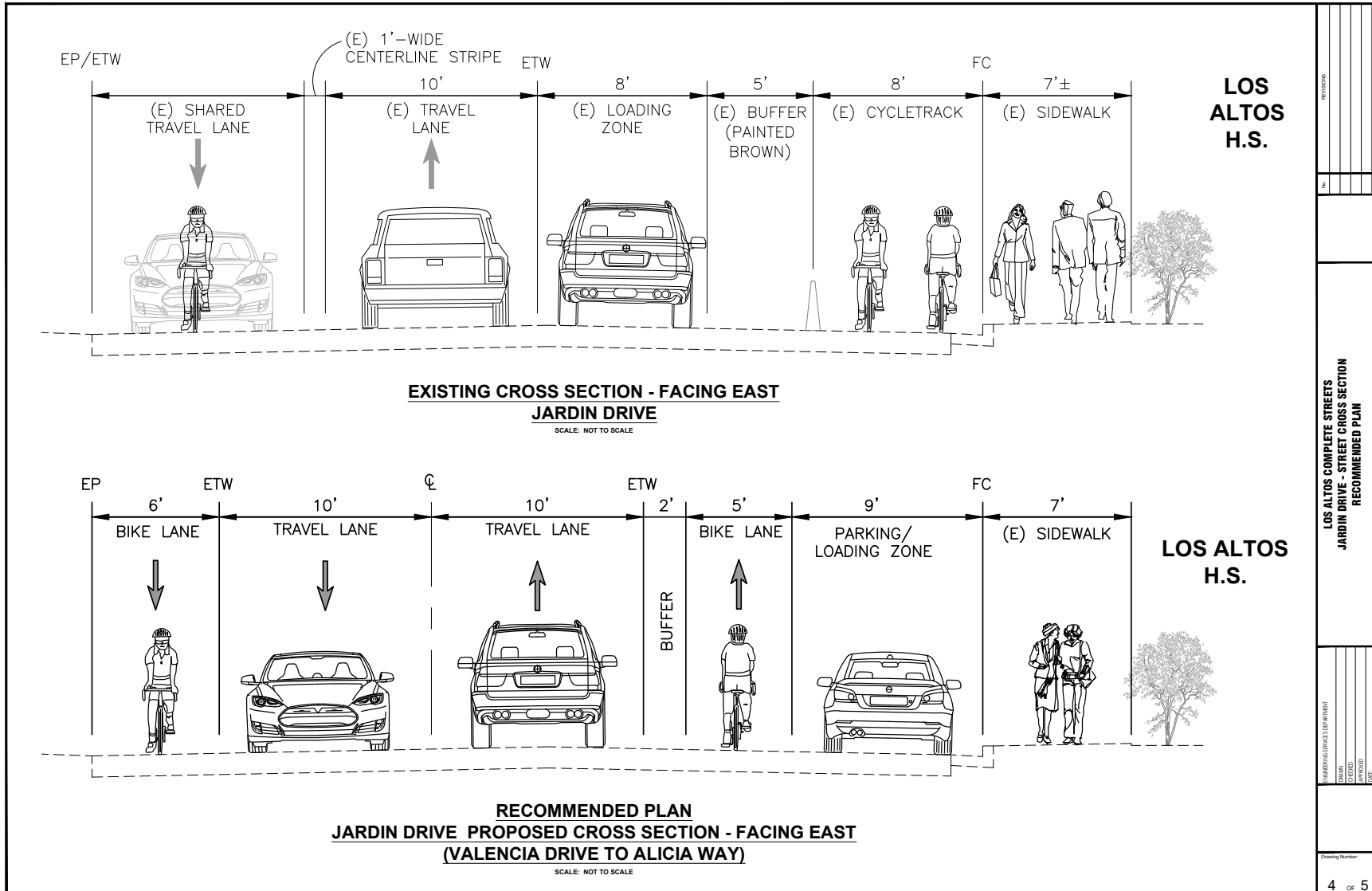


RECOMMENDED CROSS SECTION ALONG JARDIN DR

TYPICAL SECTION

Shift parking next to sidewalk on (HS) side & add 5' bike lanes on both sides

1. 9' parking provided on the south side (high school side), next to the existing sidewalk, between Valencia Dr and Alicia Way.
2. 5' bike lane with 2' buffer striping on south side.
3. 6' bike lane on north side.
4. All side streets are getting a centerline detail for a short segment and updated alignment of stop bar and stop pavement markers.
5. No Stopping Anytime signs at all corners on side streets and where parking is restricted on Jardin Dr.



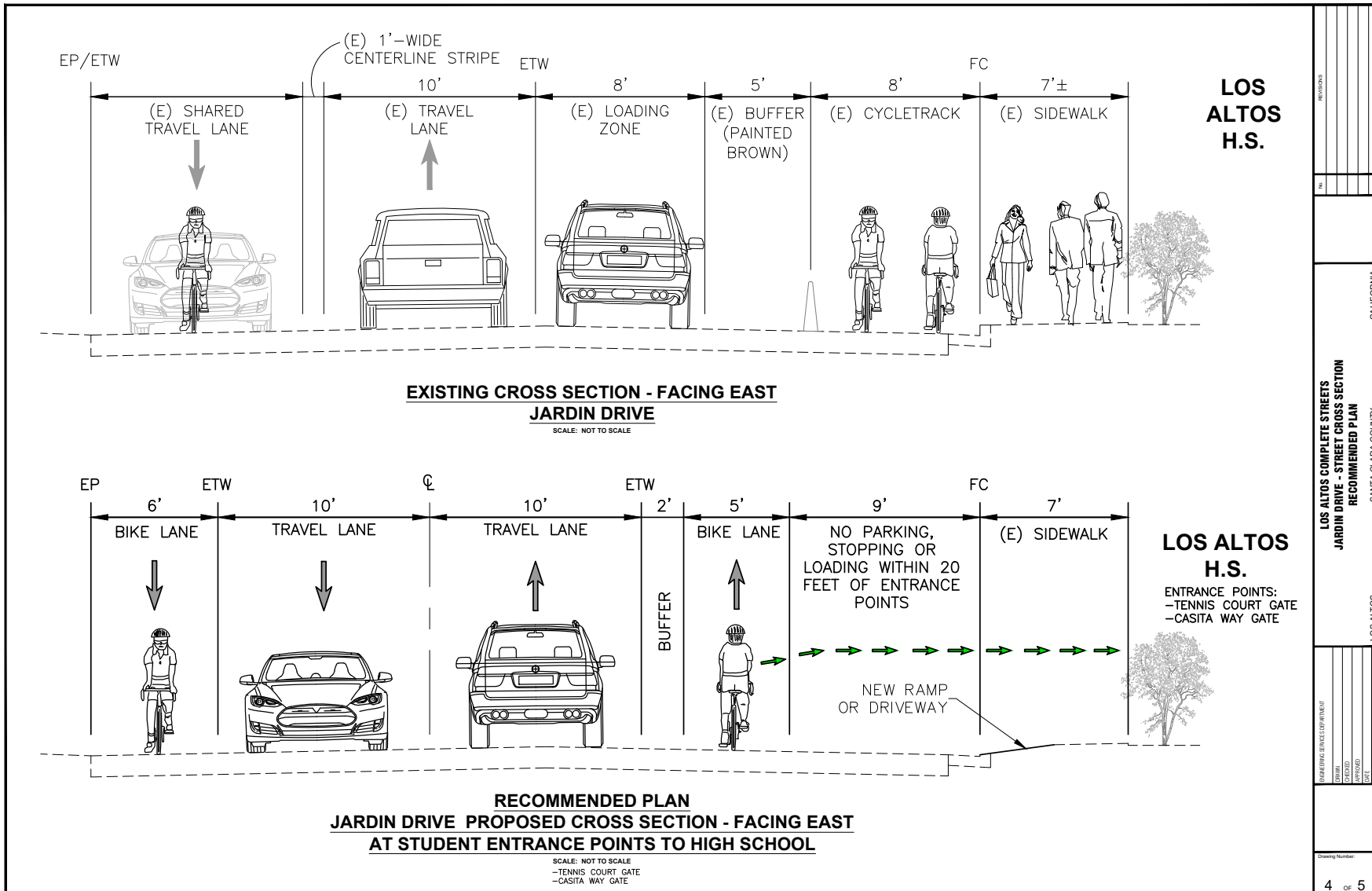


RECOMMENDED CROSS SECTION @ HS ENTRANCE POINTS

TYPICAL SECTION

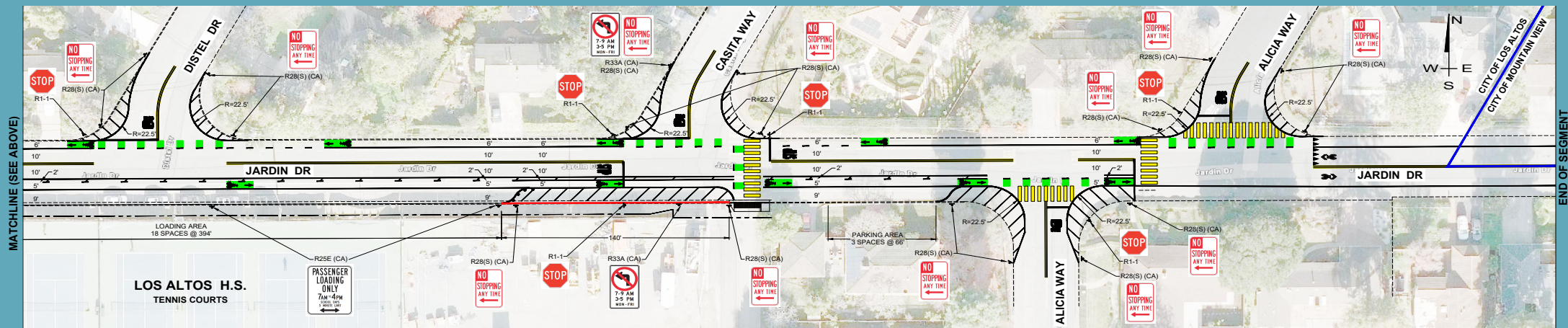
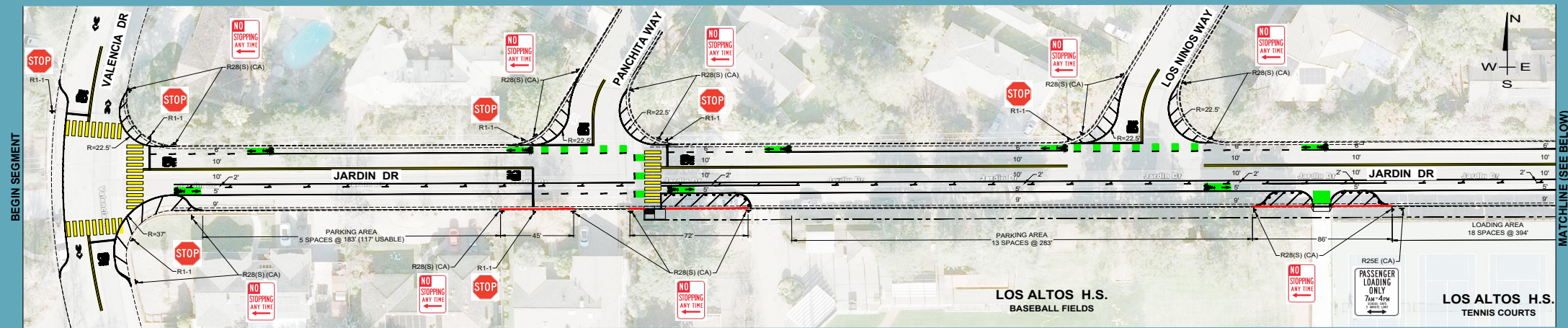
Restrict parking before and after entrance points to the high school

1. Restrict parking about 20' before and after east driveway entrance at Casita Way gate by painting curbs red, signage, and delineators.
2. Restrict parking about 20' before and after tennis courts entrance by painting curbs red, signage, and delineators.
3. Install new access driveway or ramp at tennis courts gate. High school to remove poles and improve gateway to school.
4. High school staff to guide students into the two to three main points of entrances





RECOMMENDED DESIGN



- LEGEND:**
- PAVEMENT STRIPING "NO STOPPING ANY TIME"
 - TRAFFIC DELINEATORS AT EVERY 4 FT. SEE DETAIL 1.
 - SIGN ON POST
 - RED PAINT CURB "NO STOPPING ANY TIME"
 - BIKE LANE SYMBOL AND ARROW W/ GREEN PAINTED MARKING
 - GREEN PAVEMENT MARKING
 - 4" SOLID DOUBLE YELLOW CENTER LINE
 - YIELD LINES PAVEMENT MARKING
 - SHARROW PAVEMENT MARKING
 - CONTINENTAL CROSSWALK (YELLOW)
 - CITY LIMITS



DETAIL 1



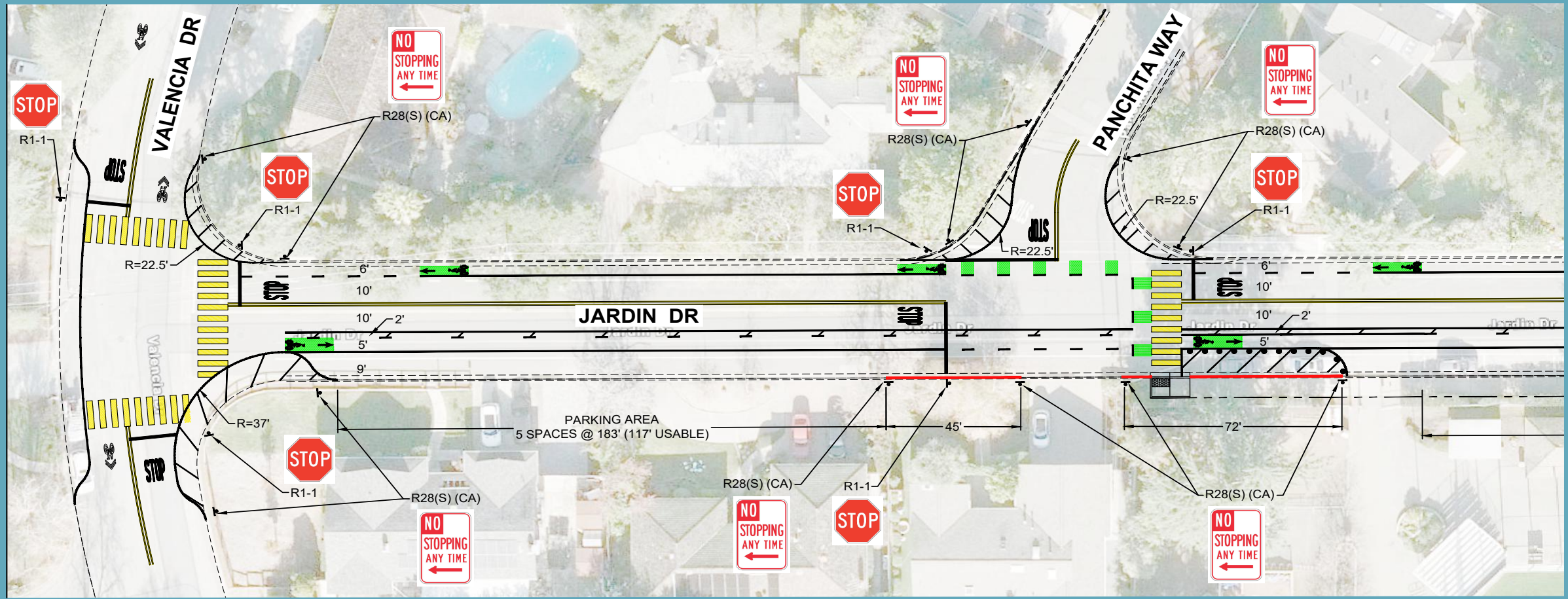
MATCHLINE (SEE BELOW)

MATCHLINE (SEE ABOVE)

PROJECT	LOS ALTOS COMPLETE STREETS
SHEET	JARDIN DRIVE
DATE	RECOMMENDED PLAN
DRAWN BY	SANTA CLARA COUNTY
CHECKED BY	LOS ALTOS
SCALE	
SHEET NUMBER	4 OF 4

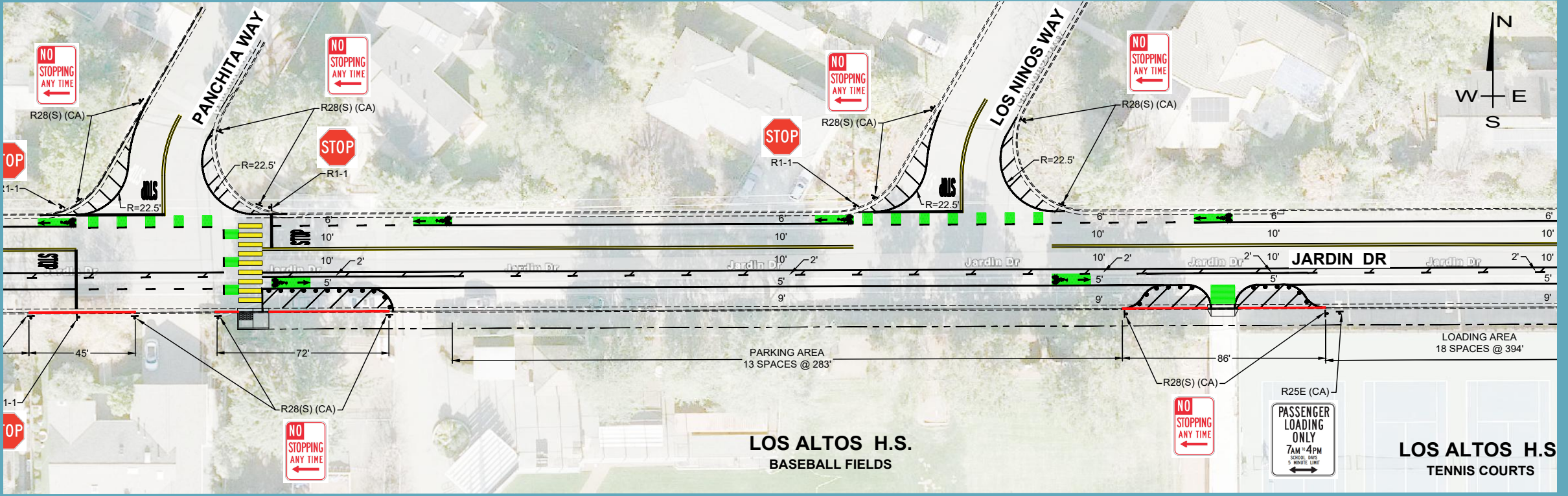


RECOMMENDED DESIGN – VALENCIA DR TO PANCHITA WAY



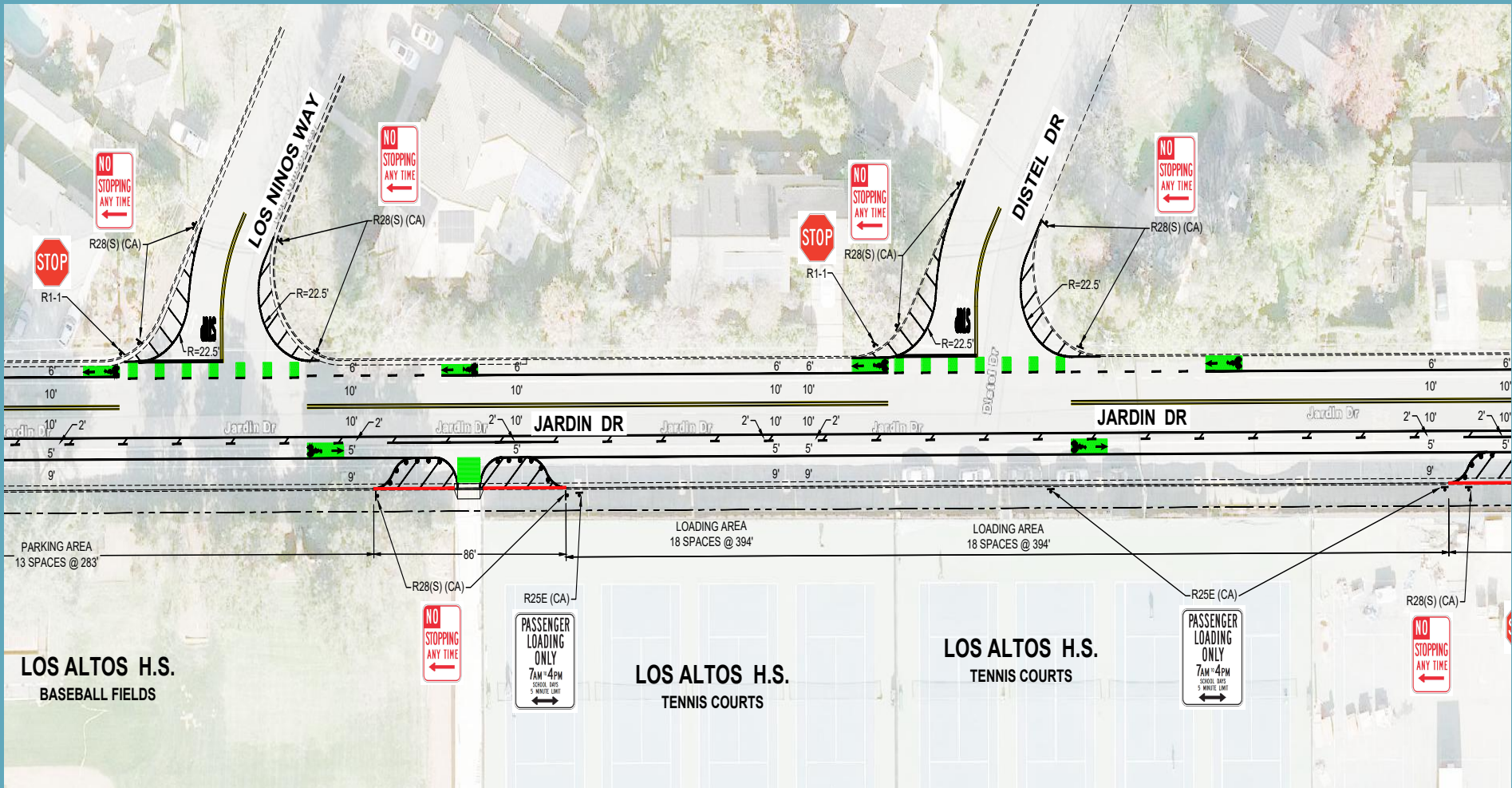


RECOMMENDED DESIGN – PANCHITA WAY TO LOS NINOS WAY (TENNIS COURTS GATE)



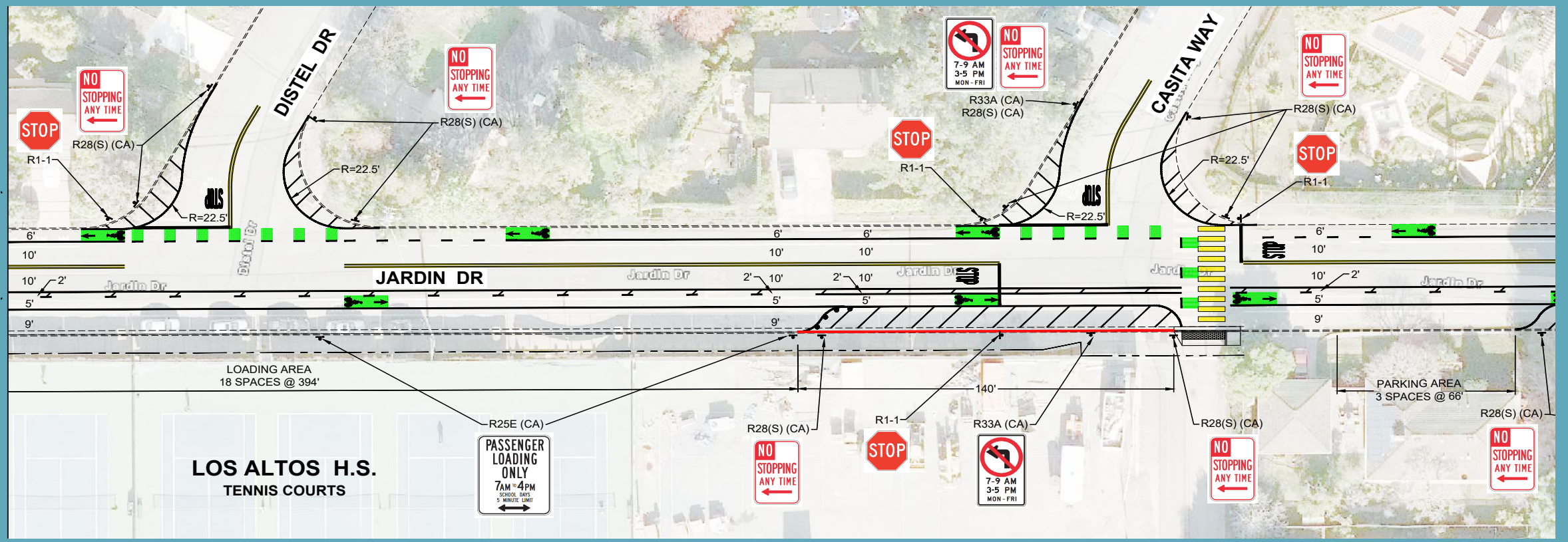


RECOMMENDED DESIGN - LOS NINOS WAY TO DISTEL DR (TENNIS COURTS)



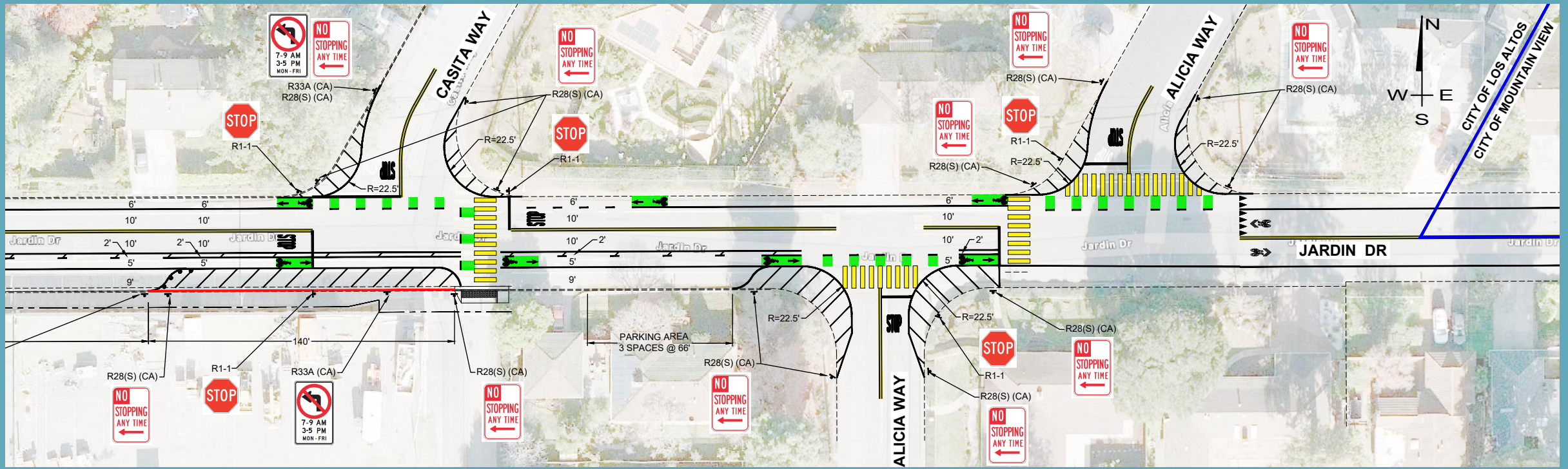


RECOMMENDED DESIGN – DISTEL DR TO CASITA WAY (EAST ENTRANCE)



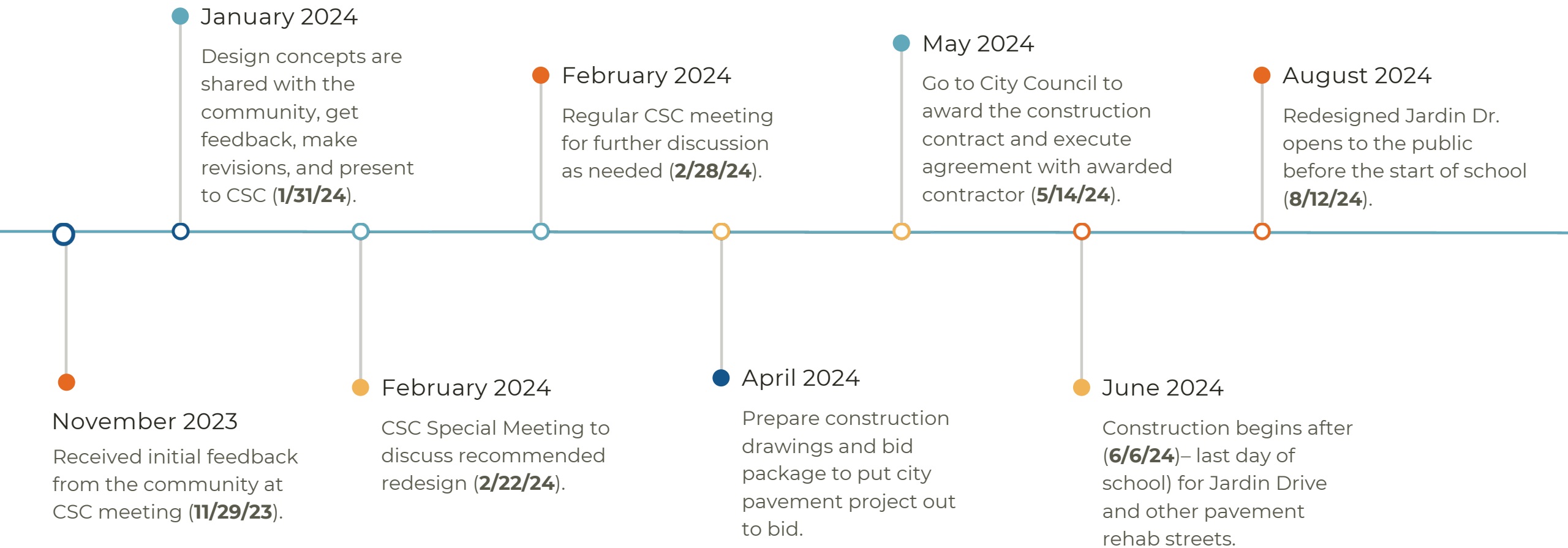


RECOMMENDED DESIGN – CASITA WAY TO ALICIA WAY





Timeline of Jardin Dr Redesign Project





THANK YOU!

Any Questions?