

**Facility Condition Assessment Services**

**Tier 1 Report of  
Facility Condition Assessment**

**For  
City of Los Altos  
History Museum  
51 S. San Antonio Road  
Los Altos,  
California 94022-3000**



**Date of Report: October 14, 2016**

Provided By:

**Faithful+Gould, Inc.**

Provided For:

**City of Los Altos**

## TABLE OF CONTENTS

<b>Executive Summary .....</b>	<b>3</b>
Introduction .....	3
Limiting Conditions .....	3
Project Details .....	4
Building Details .....	4
Building Description .....	5
Property Executive Summary .....	5
Architectural Structure Executive Summary .....	5
Mechanical Executive Summary .....	5
Electrical Executive Summary .....	6
Site Executive Summary .....	6
Summary of Findings .....	7
Building Expenditure Summary .....	7
Distribution of Immediate (Year 1) Needs by Building System .....	9
Distribution of Future (Year 2-Year 10) Needs by Building System .....	10
Facility Condition Needs Index .....	11
Needs Sorted By Prioritization of Work .....	13
Needs Sorted By Plan Type .....	14
<b>A SubStructure Systems .....</b>	<b>15</b>
<b>A10 FOUNDATIONS .....</b>	<b>15</b>
<b>B Shell Systems .....</b>	<b>16</b>
<b>B10 SUPERSTRUCTURE .....</b>	<b>16</b>
<b>B20 EXTERIOR ENCLOSURE .....</b>	<b>17</b>
<b>B30 ROOFING .....</b>	<b>19</b>
<b>C Interiors Systems .....</b>	<b>20</b>
<b>C10 INTERIOR CONSTRUCTION .....</b>	<b>20</b>
<b>C20 STAIRS .....</b>	<b>22</b>
<b>C30 INTERIOR FINISHES .....</b>	<b>23</b>
<b>D Services Systems .....</b>	<b>25</b>
<b>D10 CONVEYING SYSTEMS .....</b>	<b>25</b>
<b>D20 PLUMBING .....</b>	<b>26</b>
<b>D30 HVAC .....</b>	<b>29</b>
<b>D40 FIRE PROTECTION SYSTEMS .....</b>	<b>31</b>
<b>D50 ELECTRICAL SYSTEMS .....</b>	<b>32</b>
<b>E Equipment &amp; Furnishing Systems .....</b>	<b>34</b>
<b>E10 EQUIPMENT .....</b>	<b>34</b>
<b>Appendices .....</b>	<b>35</b>

## EXECUTIVE SUMMARY

### INTRODUCTION

In accordance with the agreement held between The City of Los Altos, agreement CF-01003 and Faithful+Gould Inc, this completed report provides a comprehensive Facility Condition Assessment of the History Museum located at 51 S. San Antonio Road, Los Altos, California, 94022-3000 (The Property).

This report provides a summary of the facility information known to us at the time of the study, the scope of work performed, an equipment inventory, evaluation of the visually apparent condition of The Property together with a forecast of capital expenditures anticipated over the next 10 years. We have provided an outlook of anticipated expenditures with no minimum value within the online iPlan™ capital planning database. The expenditure forecast does not account for typical preventative maintenance items such as changing filters to fan coil units.

Our cost rates to produce life cycle and replacement cost estimates are based on our knowledge of the local regional market rates. Our line item costs assume that the work will be undertaken by either in-house or direct sub-contract labor. If the work is procured through public general contractor bids, we recommend budgeting for additional project costs of between 25%-35% to allow for professional fees and general contractor overhead/profit and management costs.

The report provides a summary of the anticipated primary expenditures over the 10-year study period. Further details of these expenditures are included within each respective report section and within the 10-year expenditure forecast, in Appendix A.

The report also calculates the Facility Condition Needs Index (FCNI) of the facility based upon the calculated FCNI. Further discussion of the Facility Condition Needs Index is detailed in the sections below.

### LIMITING CONDITIONS

This report has been prepared for the exclusive and sole use of the City of Los Altos. The report may not be relied upon by any other person or entity without the express written consent of Faithful+Gould.

Any reliance on this report by a third party, any decisions that a third party makes based on this report, or any use at all of this report by a third party is the responsibility of such third parties. Faithful+Gould accepts no responsibility for damages, if any, suffered by any third party as a result of decisions made, or actions taken, based on this report.

The assessment of the building/site components was performed using methods and procedures that are consistent with standard commercial and customary practice as outlined in ASTM Standard E 2130-01 for PCA assessments. As per this ASTM Standard, the assessment of the building/site components is based on a visual walk-through site visit, which captured the overall condition of the site at that specific point in time only.

No legal surveys, soil tests, environmental assessments, geotechnical assessments, detailed barrier-free compliance assessments, seismic assessments, detailed engineering calculations, or quantity surveying compilations have been made. No responsibility, therefore, is assumed concerning these matters. Faithful+Gould did not design or construct the building(s) or related structures and therefore will not be held responsible for the impact of any design or construction defects, whether or not described in this report. No guarantee or warranty, expressed or implied, with respect to the property, building components, building systems, property systems, or any other physical aspect of The Property is made.

The recommendations and our opinion of probable costs associated with these recommendations, as presented in this report, are based on walk-through non-invasive observations of the parts of the building which were readily accessible during our visual review. Conditions may exist that are not as per the general condition of the system being observed and reported in this document. Opinions of probable costs presented in this report are also based on information received during interviews with operations and maintenance staff. In certain instances, Faithful+Gould has been required to assume that the information provided is accurate and cannot be held responsible for incorrect information received during the interview process. Should additional information become available with respect to the condition of the building and/or site elements, Faithful+Gould requests that this information be brought to our attention so that we may reassess the conclusions presented herein.

The opinions of probable costs are intended for global budgeting purposes only. The scope of work and the actual costs of the work recommended can only be determined after a detailed examination of the site element in question, understanding of the site restrictions, understanding of the effects on the ongoing operations of the site/building, definition of the construction schedule, and preparation of tender documents.

**PROJECT DETAILS**

On July 27, 2016, Mark Collett of Faithful+Gould visited The Property to observe and document the condition of the building and site components. During our site visit, Faithful+Gould was assisted by David Fanucchi (Facilities / Fleet Supervisor) who is associated with City of Los Altos.

**BUILDING DETAILS**

Item	Description
Project Name	History Museum
Property Type	MUS
Full Address	51 S. San Antonio Road Los Altos, California 94022-3000
Onsite Date	July 27, 2016
Historic District	No
Historic Building	No
Year Built	2001
Occupancy Status	Occupied
Number of Stories	3
Gross Building Area (GSF)	8,667
Current Replacement Value (CRV)	\$ 2,166,750
ARV/GSF (\$/Sq Ft)	\$250.00 / Sq Ft

## BUILDING DESCRIPTION

### PROPERTY EXECUTIVE SUMMARY

The Los Altos History Museum is located at 51 S. San Antonio Road, City of Los Altos, California and was constructed around 2001. The building is relatively new, and as far as we are aware there have been no major additions.

### ARCHITECTURAL STRUCTURE EXECUTIVE SUMMARY

The building is assumed to have reinforced concrete strip footing foundations, with reinforced concrete basement wall construction and a reinforced concrete slab-on-grade. The structure is on three levels with a reinforced concrete basement and vault and two floors of exhibition space constructed from a combination of masonry and wood frame structure with wood I beams and wood truss pitched roof structure. The exterior walls are finished in wood cladding. The building has aluminum framed windows and doors. There is a large sliding screen doors which provide access to a terrace / patio area for museum functions and weddings. The building has a pitched roofs with wood shake covering to match the other civic buildings.

The interior partitions consist of a combination of stud walls with gypsum wall boards and plastered masonry walls. The building has predominately wood floors, with areas of carpet, vinyl sheet, vinyl composite tiles (VCT) and ceramic tile floor finishes. The building has a combination of painted gypsum wall board and suspended acoustic ceiling tiles. The large open exhibit space has a large feature window and open stairs, with a double height lobby space. There are public restrooms at the entrance and a staff restroom in the offices in the basement. There is a small concession space, large kitchen for functions and a changing exhibit space on the first floor, and a permanent museum space on the second floor, with various exhibits and exhibit cabinets.

### MECHANICAL EXECUTIVE SUMMARY

The space is heated and cooled by a split system with a combination of seven exterior compressors and seven interior furnace / air handling units on each level.

Domestic hot water is provided to the building by a gas powered 50 gallon water heater.

The building contains vitreous china plumbing fixtures, service sinks, and single and double bowl kitchen sinks.



### ELECTRICAL EXECUTIVE SUMMARY

The electrical system consists of three main distribution panels, located in the mechanical room in the basement.

Interior lighting is comprised of feature pendant and strip display spotlights in exhibit space, with recessed and ceiling mounted fluorescent fixtures in non public areas. The exterior lighting is provided by various light fixtures.

### SITE EXECUTIVE SUMMARY

The site is predominantly landscaped with a large brick surfaced patio / terrace area. There is asphalt pavement driveway and parking adjacent the building, along with concrete sidewalks around the site. There is a concrete surface equipment area to the east. The rear of the property has a large area of exhibit space with displays of the local farming. There are certain large trees and the neighboring J Gilbert Smith House, which shares the landscaped space and is managed by the museum.



**SUMMARY OF FINDINGS**

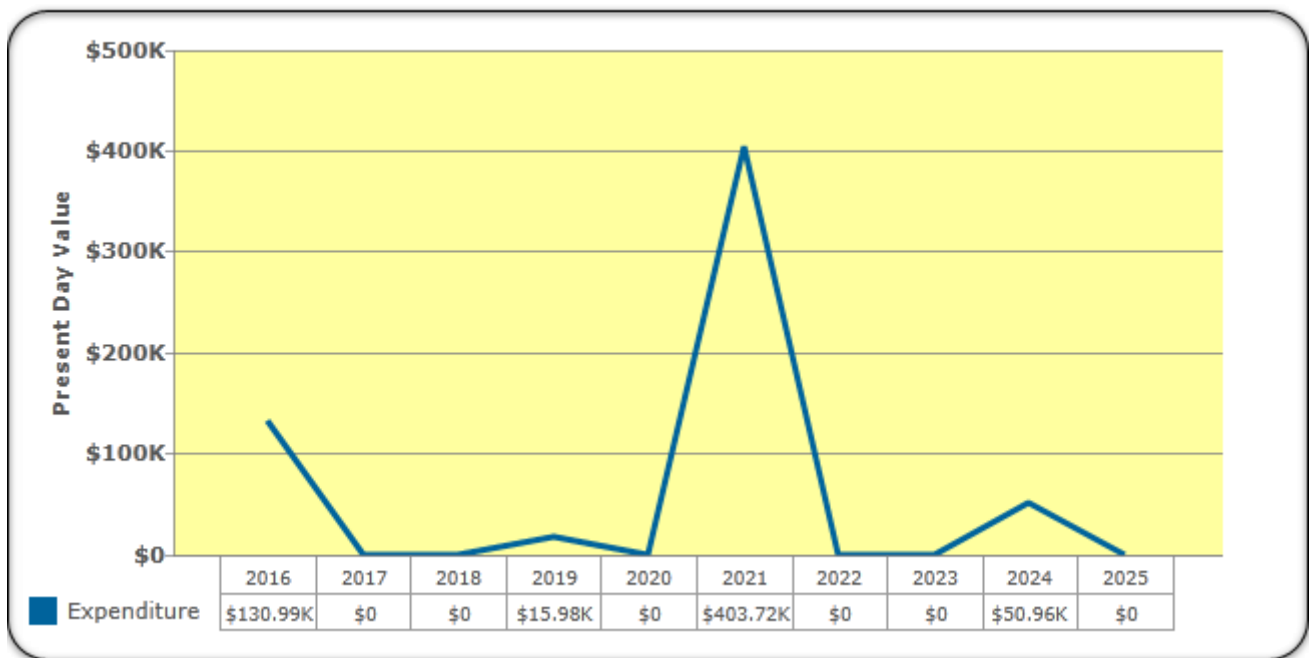
This report represents summary-level findings for the Property Condition Assessment. The deficiencies identified in this assessment can be combined with potential new construction requirements to develop an overall Long Term Capital Needs Plan that can be the basis for a facility wide capital improvement funding strategy. Key findings from the Assessment include:

Key Findings	Metric
Current Year Facility Condition Needs Index	6.05
Immediate Capital Needs (Year 1) (included in FCNI)	\$130,990
Future Capital Needs (Year 2 to Year 10)	\$470,658

**BUILDING EXPENDITURE SUMMARY**

The building expenditure summary section provides an executive overview of the findings from the assessment. The chart below provides a summary of yearly anticipated expenditures over the study period for the History Museum building. In addition, we have scheduled key findings highlighting items greater than \$5,000 and their anticipated failure year. Further details of these expenditures are included within each respective report section and within the expenditure forecast, in Appendix A of this report. The results illustrate a total anticipated expenditure over the study period of approximately \$601,648.

**Expenditure Forecast Over Study Period**





## KEY FINDINGS

- + B Shell: Replace Wood Clapboard Siding at an estimated cost of \$183,748 in year 2021
- + C Interiors: ADA Modifications to Restrooms at an estimated cost of \$23,450 in year 2016
- + C Interiors: Replace Broadloom Standard without Padding at an estimated cost of \$11,091 in year 2016
- + C Interiors: Replace Painted Finish - Standard at an estimated cost of \$50,965 in year 2016
- + C Interiors: Replace Vinyl Sheet at an estimated cost of \$11,256 in year 2019
- + C Interiors: Replace Acoustic Ceiling System - Standard at an estimated cost of \$16,580 in year 2021
- + C Interiors: Replace Painted Finish - Standard at an estimated cost of \$50,965 in year 2024
- + D Services: Replace Roof Drains at an estimated cost of \$14,034 in year 2016
- + D Services: Replace Exhaust Fan at an estimated cost of \$21,626 in year 2016
- + D Services: Replace Split-System (Air Cooled Condenser Chiller Unit) at an estimated cost of \$10,209 in year 2021
- + D Services: Replace Split-System (Air Cooled Condenser Chiller Unit) at an estimated cost of \$10,209 in year 2021
- + D Services: Replace Split-System (Air Cooled Condenser Chiller Unit) at an estimated cost of \$10,209 in year 2021
- + D Services: Replace Split-System (Air Cooled Condenser Chiller Unit) at an estimated cost of \$6,125 in year 2021
- + D Services: Replace Split-System (Air Cooled Condenser Chiller Unit) at an estimated cost of \$10,209 in year 2021
- + D Services: Replace Split-System (Air Cooled Condenser Chiller Unit) at an estimated cost of \$10,209 in year 2021
- + D Services: Replace Split-System (Air Cooled Condenser Chiller Unit) at an estimated cost of \$10,209 in year 2021
- + D Services: Replace Interior Light Fixtures - Fluorescent at an estimated cost of \$78,034 in year 2021
- + E Equipment & Furnishing: Replace Floor Mounted Base Cabinets - Standard at an estimated cost of \$35,861 in year 2021
- + E Equipment & Furnishing: Replace Unit Kitchens - Wall Mounted Cabinets - Standard at an estimated cost of \$14,942 in year 2021
- + E Equipment & Furnishing: Replace Unit Kitchens - Counter Top - Granite at an estimated cost of \$7,172 in year 2021

1 All costs presented in present day values

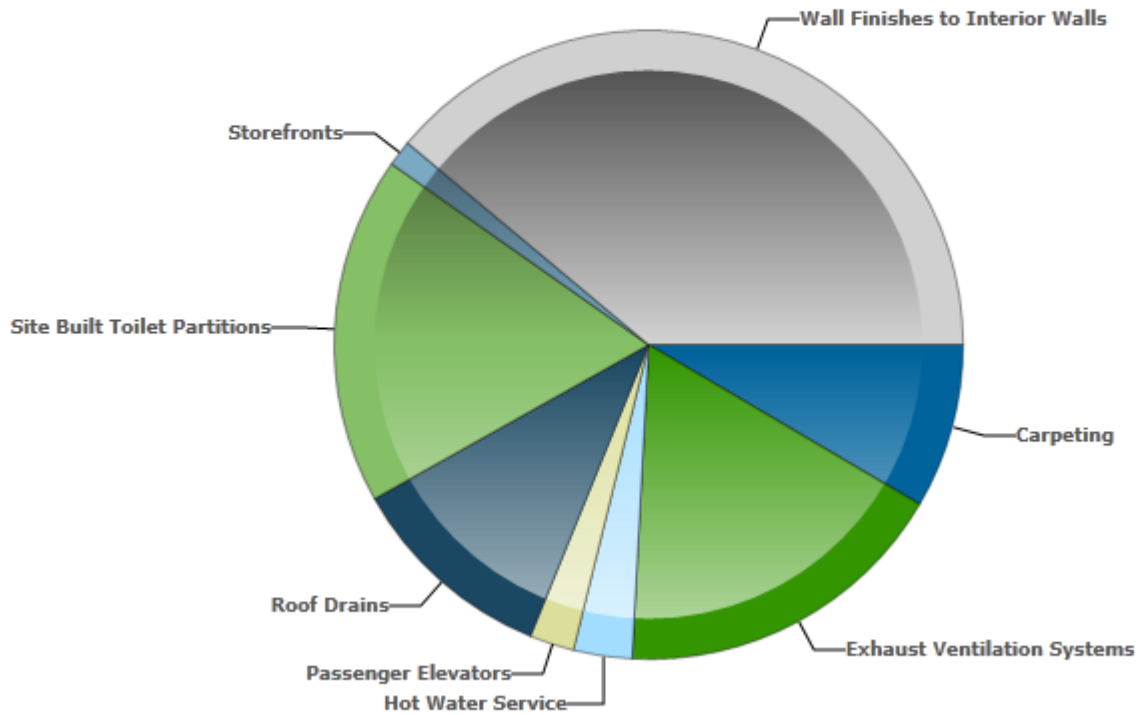
2 Costs represent total anticipated values over the 10 year study period

3 Budget for additional project costs of between 25% - 35% to allow for professional fees and general contractor overhead/profit and management costs



**DISTRIBUTION OF IMMEDIATE (YEAR 1) NEEDS BY BUILDING SYSTEM**

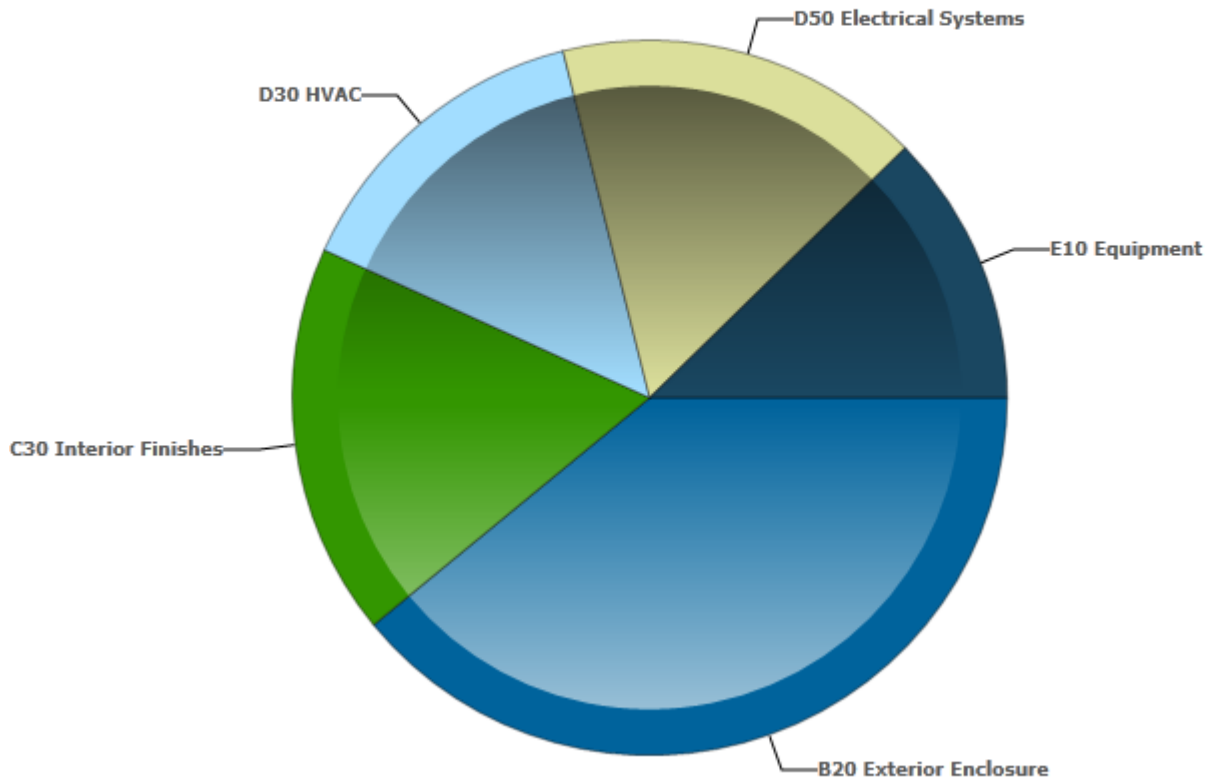
**Distribution of Immediate Needs by Building System**



Building System	Estimated Cost	Percentage of Total Cost
Carpeting	\$11,091	8.5%
Exhaust Ventilation Systems	\$22,764	17.4%
Hot Water Service	\$3,937	3.0%
Passenger Elevators	\$3,000	2.3%
Roof Drains	\$14,034	10.7%
Site Built Toilet Partitions	\$23,450	17.9%
Storefronts	\$1,750	1.3%
Wall Finishes to Interior Walls	\$50,965	38.9%
<b>Total</b>	<b>\$130,990</b>	<b>100%</b>

DISTRIBUTION OF FUTURE (YEAR 2-YEAR 10) NEEDS BY BUILDING SYSTEM

**Distribution of Capital Needs by Building System**



Building System	Estimated Cost	Percentage of Total Cost
B20 Exterior Enclosure	\$183,748	39.0%
C30 Interior Finishes	\$83,521	17.8%
D30 HVAC	\$67,379	14.3%
D50 Electrical Systems	\$78,034	16.6%
E10 Equipment	\$57,976	12.3%
<b>Total</b>	<b>\$470,658</b>	<b>100%</b>

**FACILITY CONDITION NEEDS INDEX**

In this report we have calculated the Facility Condition Needs Index (FCNI) for the facility; illustrating the likely condition of the systems, equipment and building needs should the required funding not be expended over the cost study period. The FCNI is used in Facilities Management to provide a benchmark to compare the relative condition and needs of a group of facilities. The FCNI is primarily used to support asset management initiatives of federal, state, and local government facilities organizations.

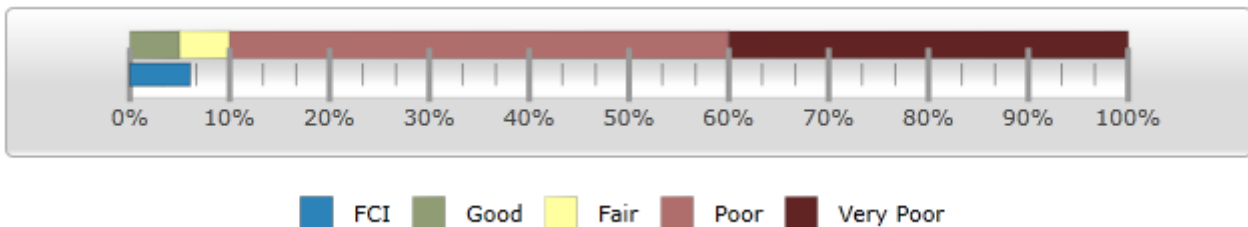
The FCNI is the ratio of accumulated Deferred Maintenance (DM) (total sum of required and recommended works) and Needs (ADA) to the Current Replacement Value (CRV) for a constructed asset. Calculated by dividing DM and Needs by CRV (in this instance we have applied an Adjusted Replacement Value (ARV) to the CRV to reflect to value of the partial building assessment). The range is from zero for a newly constructed asset, to one for a constructed asset with a DM value equal to its CRV. Acceptable ranges vary by Asset Type, but as a general guideline, the FCNI scoring system is as follows:

$$FCNI = \frac{\text{Maintenance, Repair, Needs and Replacement Deficiencies of the Facility(s)}}{\text{Current Replacement Value of the Facility(s) (CRV)}}$$

If the FCNI rating is 60% or greater then replacement of the asset/building should be considered instead of renewal.

Condition	Definition	Percentage Value
<b>GOOD</b>	In a new or well-maintained condition with no visual evidence of wear, soiling or other deficiencies.	0% to 5%
<b>FAIR</b>	Subject to wear and soiling but is still in a serviceable and functioning condition.	5% to 10%
<b>POOR</b>	Subjected to hard or long-term wear. Nearing the end of its useful or serviceable life.	Greater than 10%
<b>V-POOR</b>	Subjected to hard or long-term wear. Has reached the end of its useful or serviceable life. Renewal now necessary.	Greater than 60%

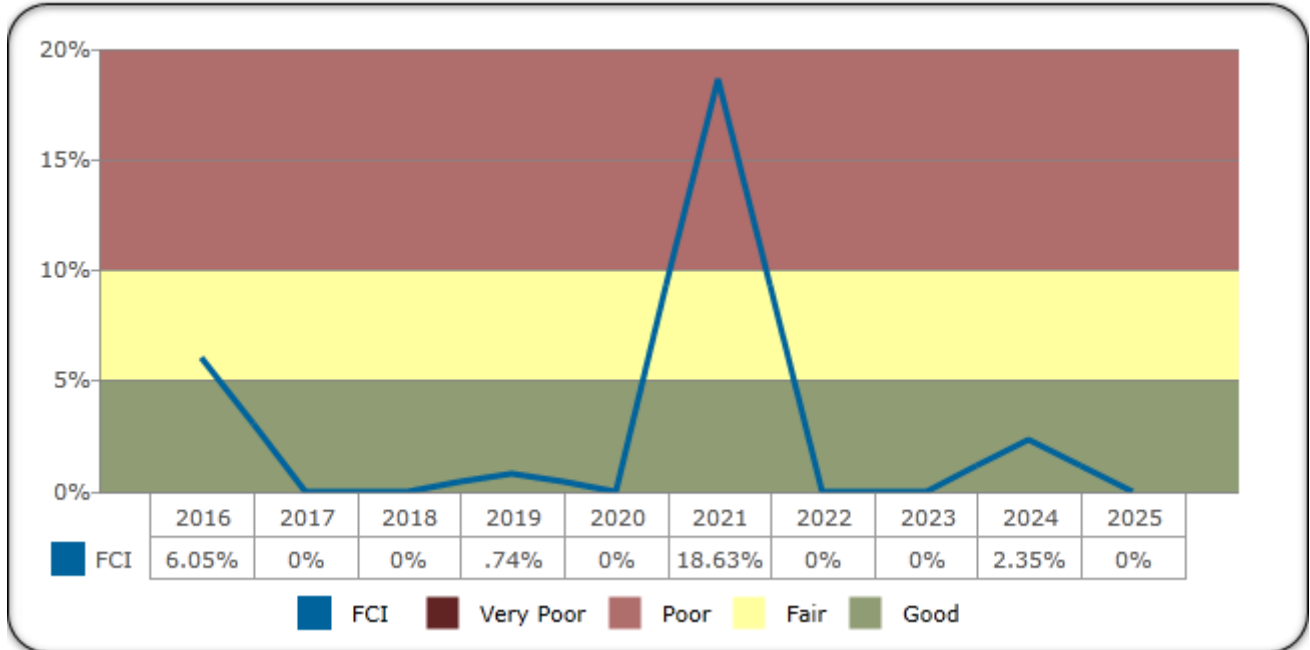
The chart below indicates the current FCNI ratio of the History Museum building.



**History Museum, FCNI: 6.05%**

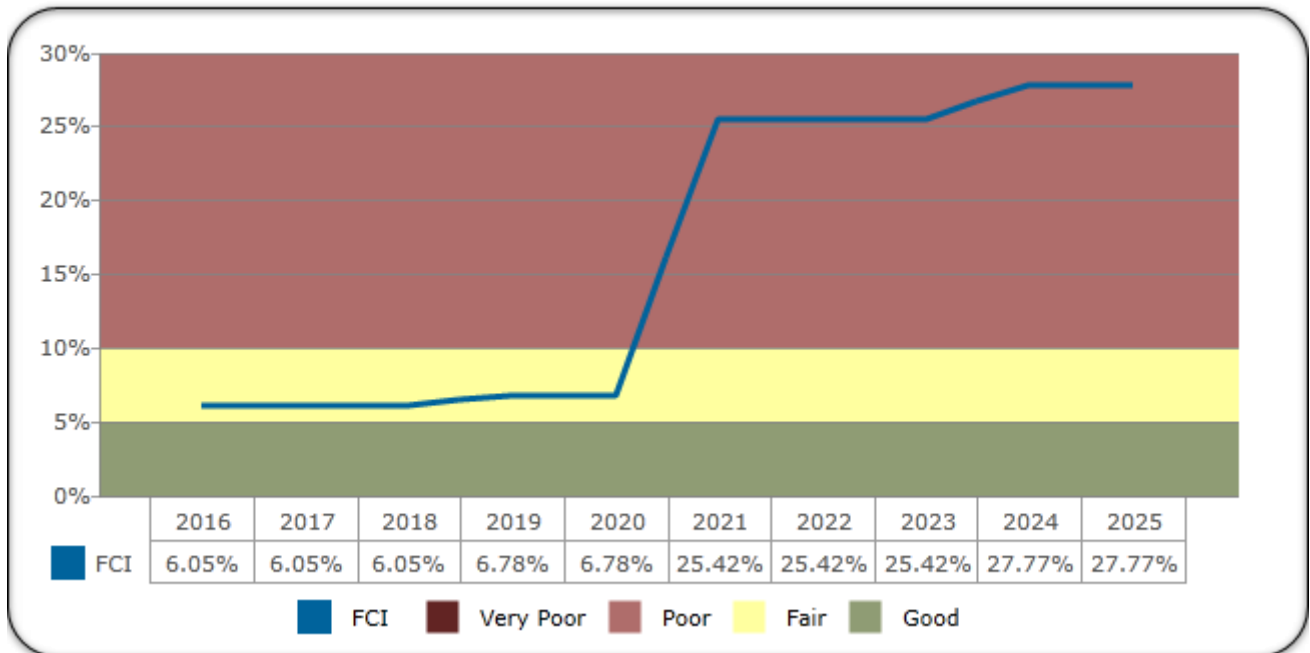
The chart below indicates the effects of the FCNI ratio per year, assuming the required funds and expenditures **ARE** made to address the identified actions each year.

### Year by Year Effects of FCI Over the Study Period



The Chart below indicates the cumulative effects of the FCNI ratio over the study period assuming the required funds and expenditures are **NOT** provided to address the identified works and deferred maintenance each year.

### Cumulative Effects of FCI over the Study Period



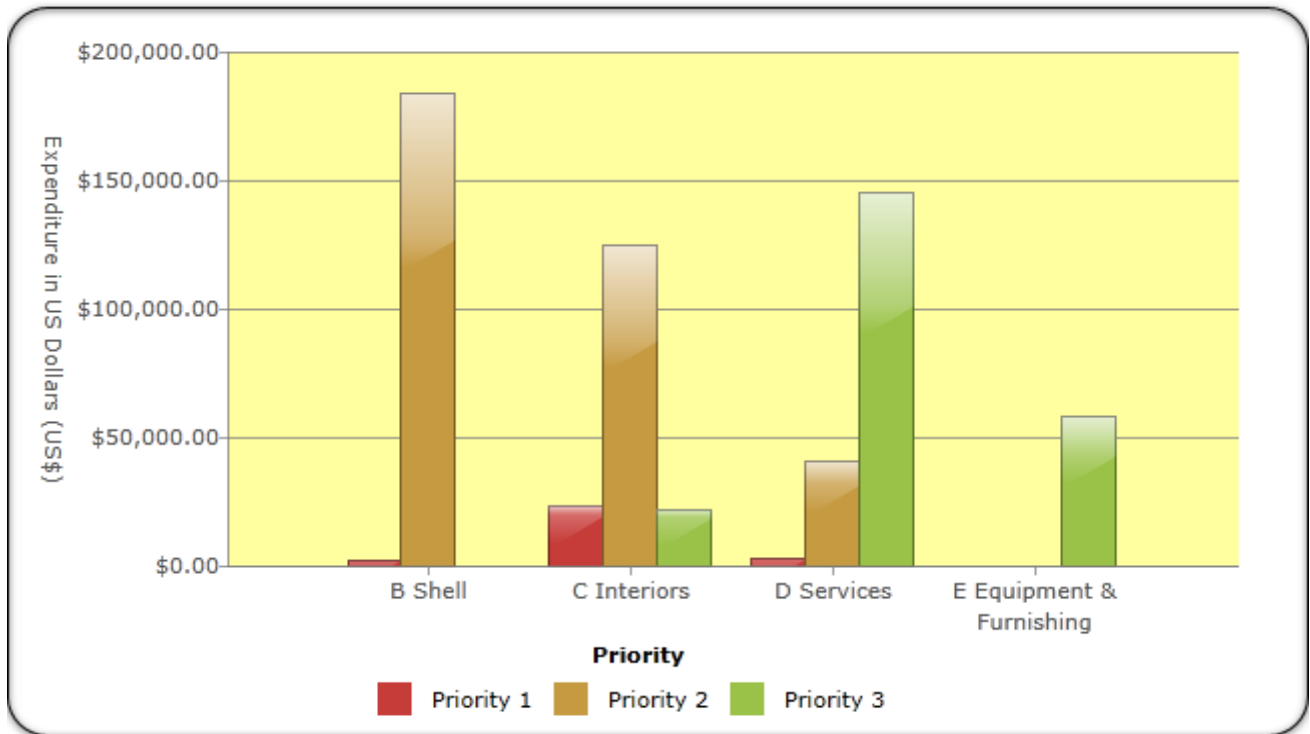
**NEEDS SORTED BY PRIORITIZATION OF WORK**

Faithful+Gould has prioritized the identified work in order to assist with analyzing the deficiencies found during the assessment. The following Priorities are shown below:

Priority 1 Currently Critical	<ul style="list-style-type: none"> <li>•Systems requiring immediate action that have failed, compromises staff or public safety or requires to be upgraded to comply with current codes and accessibility</li> </ul>
Priority 2 Potentially Critical:	<ul style="list-style-type: none"> <li>•A system or component is nearing end of useful life, if not addressed will cause additional deterioration and added repair costs</li> </ul>
Priority 3 Necessary / Not Critical:	<ul style="list-style-type: none"> <li>•Lifecycle replacements necessary but not critical or mid-term future replacements to maintain the integrity of the facility or component</li> </ul>

The chart below illustrates the breakdown of expenditure according the priority coding providing an opportunity to strategically plan and effectively direct funding to the highest priority.

**Planning Horizon Needs by System and Priority**



Building System	Priority 1	Priority 2	Priority 3	Total
B Shell	\$1,750	\$183,748	\$0	\$185,498
C Interiors	\$23,450	\$124,277	\$21,300	\$169,026
D Services	\$3,000	\$40,735	\$145,414	\$189,148
E Equipment & Furnishing	\$0	\$0	\$57,976	\$57,976
<b>Totals</b>	<b>\$28,200</b>	<b>\$348,759</b>	<b>\$224,689</b>	<b>\$601,648</b>

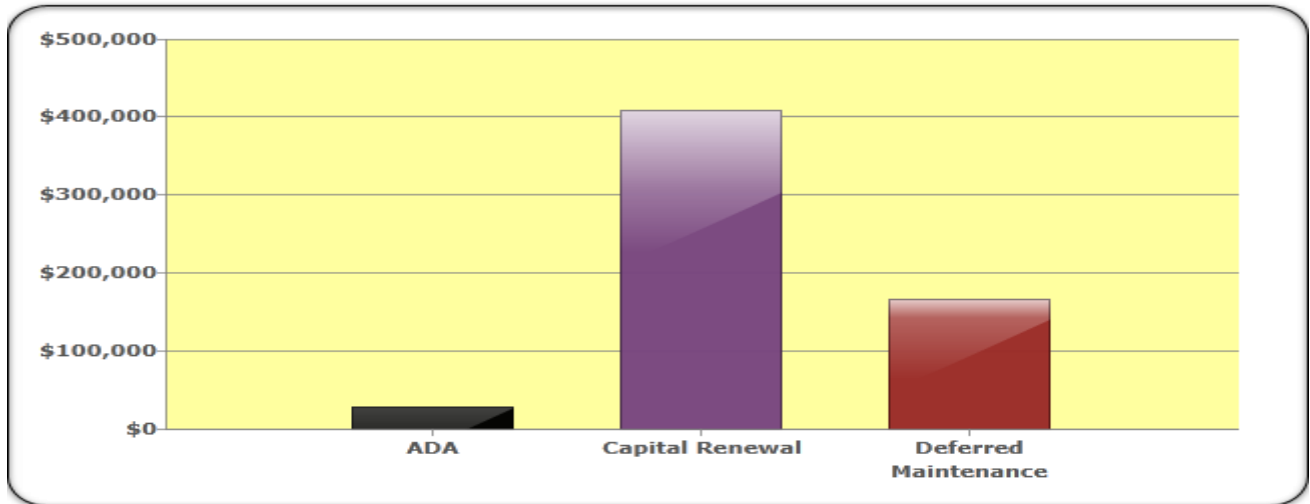
**NEEDS SORTED BY PLAN TYPE**

Faithful+Gould has prioritized the identified work according to the Plan Type or deficiency categories in order to assist with analyzing the deficiencies found during the assessment. The following Plan Types are shown below:

Plan Type 1 Deferred Maintenance	<ul style="list-style-type: none"> <li>•Maintenance that was not performed when it was scheduled or past its useful life resulting in immediate repair or replacement</li> </ul>
Plan Type 2 Routine Maintenance	<ul style="list-style-type: none"> <li>•Maintenance that is planned and performed on a routine basis to maintain and preserve the condition</li> </ul>
Plan Type 3 Capital Renewal	<ul style="list-style-type: none"> <li>•Planned replacement of building systems that have or will reach the end of their useful life</li> </ul>
Plan Type 4 Energy & Sustainability	<ul style="list-style-type: none"> <li>•When the repair or replacement of equipment or systems are recommended to improve energy and sustainability performance</li> </ul>
Plan Type 5 ADA	<ul style="list-style-type: none"> <li>•When the repair or replacement of equipment or systems are recommended to comply with ADA</li> </ul>

The chart below illustrates the breakdown of expenditure according to the Plan Type or deficiency categories providing an opportunity to strategically plan and effectively direct funding.

**Planning Horizon Needs by Category**



Building System	Total Cost
Deferred Maintenance	\$165,011
Capital Renewal	\$408,437
ADA	\$28,200
<b>Total</b>	<b>\$601,648</b>

## ^ SUBSTRUCTURE SYSTEMS

### A10 FOUNDATIONS

#### A1011 Wall Foundations

##### DESCRIPTION

The basement level contained a reinforced cast-in-place concrete wall construction. It is assumed to be supported via concrete spread footings. We are unaware of the thickness of the wall construction and the compressive strength of the concrete.

##### CONDITION

The wall constructions appeared to be in fair to good condition on the areas below grade viewed from the interior of the building. We believe the basement construction will last beyond the study period.

#### A1031 Standard Slab on Grade

##### DESCRIPTION

The basement consisted of cast-in-place concrete slab-on-grade; we assume that the floor slabs were placed over a compacted gravel fill, with the slab being laid over a sand bed. The compressive strength of the concrete is unknown.

##### CONDITION

The slab-on-grade was observed to be in fair condition, there were no signs of undue settling or cracks noted. We do not anticipate replacement or repair during the study period.



## B SHELL SYSTEMS

### B10 SUPERSTRUCTURE

#### B1012 Upper Floors Construction

##### DESCRIPTION

The first floor above the basement area appeared to consist of wood I beam joist construction with plywood and wood strip flooring.

##### CONDITION

The floor was observed to be in generally fair to good condition, with no significant cracking or failure observed. No actions will be generated during the study period.

#### B1022 Pitched Roof Construction

##### DESCRIPTION

The building's pitched roof construction consisted of wood joists, beams and rafters supporting a wood deck with a wood shake roof covering. There are open eaves which overhang the building on all sides. There are no gutters or downspouts.

##### CONDITION

The roof constructions appeared in fair condition with no signs or reports of water ingress; therefore, no actions are anticipated during the study period.

#### B1033 Wood Frame Structure

##### DESCRIPTION

The building's exterior wall construction consists a structural wood frame, with additional wood framing with a painted gypsum wall board finish internally and wood cladding externally.

##### CONDITION

The wood frame and walls were assumed to be in fair condition based on their age. There were no obvious signs of cracking or defects present; therefore, no actions will be generated during the study period.

## **B20 EXTERIOR ENCLOSURE**

### **B2011 Exterior Wall Construction**

#### **DESCRIPTION**

All the exterior walls are covered in a wood board and batten cladding, similar to the adjacent buildings at the civic center.

#### **CONDITION**

The exterior wood cladding appeared to be in fair condition with no apparent defects, therefore no actions will be generated during the study period.

### **B2021 Windows**

#### **DESCRIPTION**

The building contained dual pane insulating glass, anodized aluminum window units throughout the building at the exterior.

#### **CONDITION**

The window system appeared to be in fair condition and we assume dates from 2001, when the building was built. We noted no deterioration of frame and/or glass which would require any actions during the study period.

### **B2023 Storefronts**

#### **DESCRIPTION**

The building contains a glazed aluminum storefront system at the entrance of the building with double swing doors and above the main stairs.

#### **CONDITION**

The storefront system appeared to be in fair condition and we assume dates from 2001, when the building was built. We noted no deterioration of frame and/or glass which would require any actions during the study period aside from ADA modifications.

### **B2031 Glazed Doors & Entrances**

#### **DESCRIPTION**

The building contains double aluminum glazed entrance doors at the front entrance and a large mall slider aluminum glazed door, which opens on to the terrace.

#### **CONDITION**

The aluminum doors appeared to be in fair condition and operated properly. No replacement actions are anticipated during the study period.

**B2039 Other Doors & Entrances**

**DESCRIPTION**

The building contained three single hollow metal doors, all with painted finishes. The doors contain a combination of pull handles and lever handles at the interior and exterior as well as certain panic bars.

**CONDITION**

The hollow metal doors appeared to be in fair condition with no major signs of damage or deterioration. There were no issues with these doors therefore no actions will be generated during the study period. The new door surface finish and door frames will require repainting later in the study period. The cost of this work has been included within the amount to undertake the repainting of the exterior wood cladding.

**PROJECTED EXPENDITURES**

Identified recommended works that are required during the 10-year study period are scheduled below. We recommend budgeting for additional project costs of between 25%-35% to allow for professional fees and general contractor overhead/profit and management costs.

ID	Type	Recommendation	Priority	Year	Expenditures
155294	B2010	Replace Wood Clapboard Siding	Priority 2	2021	\$183,748
155295	B2020	ADA.Modifications to Doors	Priority 1	2016	\$1,750

**TOTALS BY YEAR**

Year	Total Expenditures
2016	\$1,750
2021	\$183,748

## **B30 ROOFING**

### **B3011 Roof Finishes**

#### **DESCRIPTION**

The sloped roof has a wood shake shingle covering.

#### **CONDITION**

The wood shake covering appeared to be in fair condition, with no roof leaks reported. We assume it to be original from 2001, with an EUL of twenty years we do not anticipate replacement during study period.

## C INTERIORS SYSTEMS

### C10 INTERIOR CONSTRUCTION

#### C1011 Fixed Partitions

##### DESCRIPTION

The building contains a combination of wood framed partitions with a GWB painted finish and masonry partitions comprising a painted plaster finish.

##### CONDITION

The walls were noted to be in fair condition, therefore replacement will not be necessary during the study period.

#### C1014 Site Built Toilet Partitions

##### DESCRIPTION

Toilet partitions are present in the restrooms.

##### CONDITION

The restroom toilet partitions were observed to be in fair to good condition and no actions are anticipated within the study period aside from ADA modifications.

#### C1021 Interior Doors

##### DESCRIPTION

The building contained twenty two single interior wood doors, with metal frames, with a wood veneer varnished finish. The doors all contained a combination of lever handles, handlesets with integrated or separate cylindrical lock set.

##### CONDITION

All the wood doors at the building were observed to be in fair condition. We have assumed the doors to be replaced in 1999 based on the current condition, therefore we do not anticipate replacement during the study period. The door surface finish will require varnishing or painting later in the study period. The cost of this work has been included within the amount to undertake the repainting of the interior walls.

**PROJECTED EXPENDITURES**

Identified recommended works that are required during the 10-year study period are scheduled below. We recommend budgeting for additional project costs of between 25%-35% to allow for professional fees and general contractor overhead/profit and management costs.

ID	Type	Recommendation	Priority	Year	Expenditures
155296	C1010	ADA Modifications to Restrooms	Priority 1	2016	\$23,450

**TOTALS BY YEAR**

Year	Total Expenditures
2016	\$23,450

## **C20 STAIRS**

### **C2011 Regular Stairs**

#### **DESCRIPTION**

There are two sets of wood stairs from the basement area up to the second floor level.

#### **CONDITION**

The stairs are in fair to good condition. Therefore no repair or replacement actions will be generated during the study period.



## C30 INTERIOR FINISHES

### C3012 Wall Finishes to Interior Walls

#### DESCRIPTION

There is a combination of wall finishes throughout the building, these included painted finishes and ceramic wall tile to restrooms.

#### CONDITION

The interior wall finishes to the various restrooms were observed to be in fair condition. The ceramic tile has an EUL of thirty years. We did not observe any broken or loose tiles or missing grout; therefore we do not anticipate replacement during the study period. The interior painted wall finishes generally were observed to be in a fair condition. We anticipate the repainting of the interior surfaces early in the study period to maintain appearances.

### C3024 Flooring

#### DESCRIPTION

There is a combination of floor finishes throughout the building which include vinyl sheet to vault and kitchen areas, ceramic tiles to the restrooms and vinyl composite tile to the storage and mechanical rooms. The main areas of the museum are wood strip flooring.

#### CONDITION

The floor finishes appeared in fair condition throughout the building. The vinyl sheet and The vinyl composite tile (VCT) has a EUL of eighteen years for these type of covering, we anticipate replacement early in the study period. The ceramic tile at the restrooms was in fair condition and has a EUL of thirty years. We did not observe any broken or loose tiles or missing grout; therefore, we expect the ceramic tile to last beyond the study period. The wood flooring was also observed to be in a good condition, therefore with a EUL of twenty five years, we do not anticipate replacement during the study period.

### C3025 Carpeting

#### DESCRIPTION

There is carpet throughout the offices, corridors and bedroom areas.

#### CONDITION

The carpet is in fair condition. We are unaware of the age of the carpeting, however we assume it to be more than fifteen years of age, therefore based on the typical EUL of ten years for this type of covering and current observed condition, we anticipate replacement early in the study period.

### C3031 Ceiling Finishes

#### DESCRIPTION

The interior ceilings contain 2 x 4 suspended acoustic tiles throughout office areas. There are adhered 1x1 acoustic tiles at the first floor exhibit space. There are GWB ceilings with a painted finish to the store areas and basement vault.

**CONDITION**

The acoustic tiles appeared in fair condition overall. We are unaware of the age; however we assume it to be more than fifteen years of age, therefore based on the typical EUL of twenty years for this type of ceiling and current observed condition, we anticipate replacement during in the study period. The GWB ceiling is fair condition and we do not anticipate replacement during the study period, however we have included for painting these surfaces early in the study period as part of the interior painting.

**PROJECTED EXPENDITURES**

Identified recommended works that are required during the 10-year study period are scheduled below. We recommend budgeting for additional project costs of between 25%-35% to allow for professional fees and general contractor overhead/profit and management costs.

ID	Type	Recommendation	Priority	Year	Expenditures
155297	C3010	Replace Painted Finish - Standard	Priority 2	2016	\$50,965
155298	C3010	Replace Painted Finish - Standard	Priority 2	2024	\$50,965
155299	C3020	Replace Vinyl Sheet	Priority 2	2019	\$11,256
155300	C3020	Replace Vinyl Composite Tile (VCT)	Priority 3	2019	\$4,720
155301	C3020	Replace Broadloom Standard without Padding	Priority 2	2016	\$11,091
155302	C3030	Replace Acoustic Ceiling System - Standard	Priority 3	2021	\$16,580

**TOTALS BY YEAR**

Year	Total Expenditures
2016	\$62,056
2019	\$15,976
2021	\$16,580
2024	\$50,965

## D SERVICES SYSTEMS

### D10 CONVEYING SYSTEMS

#### D1011 Passenger Elevators

##### DESCRIPTION

The building contained one hydraulic-drive passenger elevator, which is manufactured by Golden Gate Elevators and has a capacity of 2,500 lbs. The elevator serves three floor levels. Elevator records were not made available during the site inspection.

##### Machine Room Equipment

The machine room was at the basement level and contained the hydraulic fluid tank, pump and valve equipment serving the hydraulic ram to the elevator car together with its individual control equipment.

##### Cabs

The elevator cab consists of front entry pre-finished steel elevator doors and surrounds with a combination of stainless steel and laminate sheet panel interior walls. Car-operating panels are provided within the cab.

##### CONDITION

The hydraulic elevator appeared to be in fair condition. The equipment was operational at the time of the assessment and no issues were reported to us. With regular maintenance we do not anticipate any actions within the study period aside from ADA modifications

Performance measurements were not taken to evaluate system performance to industry standards as published by the National Elevator Industry Inc. (N.E.I.I.). General system performance was observed such as door operation, acceleration and stopping. Where observed, performance appeared adequate.

##### PROJECTED EXPENDITURES

Identified recommended works that are required during the 10-year study period are scheduled below. We recommend budgeting for additional project costs of between 25%-35% to allow for professional fees and general contractor overhead/profit and management costs.

ID	Type	Recommendation	Priority	Year	Expenditures
155303	D1010	ADA Modifications to Elevator	Priority 1	2016	\$3,000

#### TOTALS BY YEAR

Year	Total Expenditures
2016	\$3,000

## D20 PLUMBING

### D2011 Water Closets

#### DESCRIPTION

The building contains one floor mounted and five wall mounted vitreous china water closets with plastic seats within the restrooms. These are tank-less type units with manual flush valves which drain to the rear of the unit.

#### CONDITION

The water closets were observed to be in fair condition for the type and use of the building. The water closets flushed properly and did not have any cracks in the china therefore no replacement actions will be generated during the study period.

We anticipate that the flush valves may fail during the study period and therefore to maintain function they may need to be rebuilt or in some cases replaced. This work has not been included in this study as we anticipate it will be carried out on an as-needed basis as part of routine maintenance.

### D2012 Urinals

#### DESCRIPTION

The building contained two wall hung vitreous china urinal in the men's restrooms. The urinals had manual flush valves.

#### CONDITION

The urinal was observed to be in fair condition. The urinal flushed properly and did not have any cracks in the china, therefore no actions will be generated during the study period. We anticipate that the flush valve may fail during the study period and therefore to maintain function they may need to be rebuilt or in some cases replaced. This work has not been included in this study as we anticipate it will be carried out on an as-needed basis as part of routine maintenance.

### D2013 Lavatories

#### DESCRIPTION

The building contained six wall mounted vitreous china lavatories. The lavatories have single lever handled, metal non-metered faucets.

#### CONDITION

All the lavatories were observed to be in fair condition. All the wall hung lavatories drained properly and appeared to not have any cracks in the china; therefore we do not anticipate replacement during the study period.

### D2014 Sinks

#### DESCRIPTION

The building contained one double bowl and two single commercial grade stainless steel sinks, with single lever facets, as well as one floor mounted mop sink within the janitor's store.

## CONDITION

The sinks appeared to be in fair to good condition. The stainless steel sinks were operational within no reported issues or damage present. We do not anticipate a requirement to replace the sinks during the study period. The floor mounted service sink appeared to be in a fair condition and will also last beyond the study period. We anticipate that the faucets may fail during the study period and therefore to maintain function they may need to be replaced. This work has not been included in this study as we anticipate it will be carried out on an as-needed basis as part of routine maintenance.

### D2022 Hot Water Service

## DESCRIPTION

The building contained a natural gas domestic water heater, which is located in the mechanical room. The water heaters is manufactured by AO Smith with a capacities of 50 gallons.

## CONDITION

The domestic water heater appeared to be in fair condition and installed in 1993; therefore, based on a EUL of fifteen years we have included for replacement early in the study period.

### D2031 Waste Piping

## DESCRIPTION

The sanitary waste discharge is a gravity-based system comprised of cast iron pipe. The main line discharges into the municipal sanitary waste system.

## CONDITION

The sanitary waste system was observed to be in fair to good condition with no noted issues; therefore, no actions will be generated during the study period.

### D2042 Roof Drains

## DESCRIPTION

The roof levels drain to 4"-diameter roof drains located over the roof surfaces and are connected to interior leaders; there are also overflow storm drains present at each of the outlet locations.

## CONDITION

The roof drains / interior leaders are in a fair condition with no reported condition, therefore we do not anticipate replacement during the study period.

### PROJECTED EXPENDITURES

Identified recommended works that are required during the 10-year study period are scheduled below. We recommend budgeting for additional project costs of between 25%-35% to allow for professional fees and general contractor overhead/profit and management costs.

ID	Type	Recommendation	Priority	Year	Expenditures
155304	D2020	Replace Domestic Hot Water Heater - Gas	Priority 2	2016	\$3,937
155305	D2040	Replace Roof Drains	Priority 2	2016	\$14,034

### TOTALS BY YEAR

Year	Total Expenditures
2016	\$17,971

## D30 HVAC

### D3032 Direct Expansion Systems

#### DESCRIPTION

The building's heating and cooling is provided by a split-systems with seven natural gas furnaces located on each level of the building and seven corresponding condensers outside. The furnaces are manufactured by Carrier with a capacity of 40, 80 and 100 MBH. The condenser are also manufactured by Carrier, with a capacity range of 2 to 5 tons. The basement vault has a separate system which regulates moisture content.

Wall mounted thermostats are used to control the units in the areas they serve.

#### CONDITION

The furnaces and condensers appeared in fair condition and functioned properly. They were installed in 2001. The condensers will have and have reached their twenty year EUL, therefore we have included for their replacement early in the study period. The furnace has a EUL of thirty years and will not need replacing during the study period.

### D3042 Exhaust Ventilation Systems

#### DESCRIPTION

The building contained five exhaust fans, which serve the restrooms and kitchen. They do not appear to operate continuously, only when needed. The manufacturers of the fans is Nutone; they have capacities of 80 and 150 CFM with the extract hood having a capacity of 1080 CFM.

#### CONDITION

The exhaust fans were generally in fair condition with no visual indications of deterioration. No issues were reported to us regarding their function. Based on typical EUL of fifteen years and their condition we anticipate that they need to be replaced early in the study period to maintain efficient operation and reduce maintenance.



### PROJECTED EXPENDITURES

Identified recommended works that are required during the 10-year study period are scheduled below. We recommend budgeting for additional project costs of between 25%-35% to allow for professional fees and general contractor overhead/profit and management costs.

ID	Type	Recommendation	Priority	Year	Expenditures
155306	D3030	Replace Split-System (Air Cooled Condenser Chiller Unit)	Priority 3	2021	\$10,209
155307	D3030	Replace Split-System (Air Cooled Condenser Chiller Unit)	Priority 3	2021	\$10,209
155308	D3030	Replace Split-System (Air Cooled Condenser Chiller Unit)	Priority 3	2021	\$10,209
155309	D3030	Replace Split-System (Air Cooled Condenser Chiller Unit)	Priority 3	2021	\$10,209
155310	D3030	Replace Split-System (Air Cooled Condenser Chiller Unit)	Priority 3	2021	\$6,125
155311	D3030	Replace Split-System (Air Cooled Condenser Chiller Unit)	Priority 3	2021	\$10,209
155312	D3030	Replace Split-System (Air Cooled Condenser Chiller Unit)	Priority 3	2021	\$10,209
155313	D3040	Replace Exhaust Fan	Priority 2	2016	\$371
155314	D3040	Replace Exhaust Fan	Priority 2	2016	\$371
155315	D3040	Replace Exhaust Fan	Priority 2	2016	\$21,626
155316	D3040	Replace Exhaust Fan	Priority 2	2016	\$198
155317	D3040	Replace Exhaust Fan	Priority 2	2016	\$198

### TOTALS BY YEAR

Year	Total Expenditures
2016	\$22,764
2021	\$67,379

## D40 FIRE PROTECTION SYSTEMS

### D4011 Sprinkler Water Supply

#### DESCRIPTION

The building is protected with an automatic wet-pipe fire suppression system utilizing standard pendant and up-right commercial sprinkler heads fixed to fire-line pipes which are supported via the upper structure. The system is monitored by water flow and tamper switches connected to the site wide fire alarm system. The water is supplied directly from the public utilities.

#### CONDITION

The sprinkler system was observed to be in fair to good condition and all inspections up to date. The typical EUL for sprinkler systems such as this is thirty five years; therefore replacement will not be necessary during the study period.

## D50 ELECTRICAL SYSTEMS

### D5012 Low Tension Service & Dist

#### DESCRIPTION

The building contains three Main Distribution Panels (MDP) all manufactured by Square D, located in the electrical room in the basement. One has a capacity of 120/208 volts at 225 amps. The other two have capacities of 120/208 volts at 200 amps.

#### CONDITION

The main distribution switchboards and panelboards appeared to be in fair condition, there were no signs of deterioration or issues noted at any of the electrical systems. With a typical EUL for electrical switchboard gear, such as this is thirty years; therefore replacement is not anticipated during the study period. We do however recommend further evaluation of the switchboard via an infrared electrical inspection which will highlight if high temperatures, excessive electrical resistance, failing components, ground faults and short circuiting issues exist.

The electrical equipment should receive preventive maintenance consisting of cleaning the interiors of all enclosures, and infrared scans of connections, fuses, and breakers in switches, panel boards, and motor starters beginning at the start of the study period and repeated no more than every three years thereafter. Any items identified as abnormal during the infrared scans should be corrected at that time.

### D5021 Branch Wiring Devices

#### DESCRIPTION

The branch wiring devices including switches, receptacles, GFCI and other devices were observed to be commercial grade in standard non-decor format. Branch wiring was observed to be distributed in Electrical Metallic Tubing (EMT) conduit except in locations that may vibrate where flexible metal clad cable is typically used.

#### CONDITION

The branch wiring was observed to be in fair to good condition as it has been repaired, modified and added to over the years; therefore with no broken outlets or switches no actions will be generated during the study period.

### D5022 Lighting Equipment

#### DESCRIPTION

The interior lighting is provided by a combination of light fixtures which consisted of pendant, display track and surface mounted types. The lighting to the restrooms and other areas of GWB ceilings is either surface mounted or recessed, whilst the light fixtures to the offices consists of 2' x 4' fluorescent recessed fixtures within the suspended ceiling system. All of the in-room lighting is controlled via local switching.

#### CONDITION

The interior lighting was observed to be in fair condition along with the suspended ceiling system itself. These recessed light fixtures typically have an EUL of 20 years; therefore based on observed condition they have been recommended for replacement during the study period. We anticipate the remaining suspended fluorescent lighting and recessed can light fixtures will also need to be replaced early in the study period. When the interior lighting is replaced consideration should be taken to replace with more efficient lamps.

### PROJECTED EXPENDITURES

Identified recommended works that are required during the 10-year study period are scheduled below. We recommend budgeting for additional project costs of between 25%-35% to allow for professional fees and general contractor overhead/profit and management costs.

ID	Type	Recommendation	Priority	Year	Expenditures
155318	D5020	Replace Interior Light Fixtures - Fluorescent	Priority 3	2021	\$78,034

### TOTALS BY YEAR

Year	Total Expenditures
2021	\$78,034

## E EQUIPMENT & FURNISHING SYSTEMS

### E10 EQUIPMENT

#### E1095 Unit Kitchens

#### DESCRIPTION

The building contains upper and lower cabinets with granite countertops and stainless steel insert sinks in the kitchen area.

#### CONDITION

We have assumed the cabinets and countertop to be original from 2001 therefore, based on a EUL of twenty years, we recommend replacing during in the study period.

#### PROJECTED EXPENDITURES

Identified recommended works that are required during the 10-year study period are scheduled below. We recommend budgeting for additional project costs of between 25%-35% to allow for professional fees and general contractor overhead/profit and management costs.

ID	Type	Recommendation	Priority	Year	Expenditures
155319	E1090	Replace Floor Mounted Base Cabinets - Standard	Priority 3	2021	\$35,861
155320	E1090	Replace Unit Kitchens - Counter Top - Granite	Priority 3	2021	\$7,172
155321	E1090	Replace Unit Kitchens - Wall Mounted Cabinets - Standard	Priority 3	2021	\$14,942

#### TOTALS BY YEAR

Year	Total Expenditures
2021	\$57,976



## APPENDICES

- APPENDIX A: Capital Expenditures
- APPENDIX B: Photographic Record
- APPENDIX C: Document Review and  
Warranty Information
- APPENDIX D: Equipment Tables
- APPENDIX E: Glossary of Terms
- APPENDIX F: ADA Study



**APPENDIX A:**  
CAPITAL EXPENDITURES

# Deficiency Report

## History Museum

GSF: 8,667

Year Built: 2001

Renew Year :

Replacement Cost: \$2,166,750

Fiscal Year	\$	ID	CSI	Type Name	Description	Materials			Estimate	\$
						Qty	Units	Cost Assessed Cost		
2016	\$130,990	155295	B2020	ADA	ADA.Modifications to Doors	1	LS	\$1,750.00	\$1,750	\$1,750
		155296	C1010	ADA	ADA Modifications to Restrooms	1	LS	\$23,450.00	\$23,450	\$23,450
		155297	C3010	Deferred Maintenance	Replace Painted Finish - Standard	18920	SF	\$2.69	\$50,965	\$50,965
		155301	C3020	Deferred Maintenance	Replace Broadloom Standard without Padding	157	SY	\$70.64	\$11,091	\$11,091
		155303	D1010	ADA	ADA Modifications to Elevator	1	LS	\$3,000.00	\$3,000	\$3,000
		155304	D2020	Deferred Maintenance	Replace Domestic Hot Water Heater - Gas	50	GALS	\$78.73	\$3,937	\$3,937
		155305	D2040	Deferred Maintenance	Replace Roof Drains	163	LF	\$86.10	\$14,034	\$14,034
		155313	D3040	Deferred Maintenance	Replace Exhaust Fan	150	CFM	\$2.47	\$371	\$371
		155314	D3040	Deferred Maintenance	Replace Exhaust Fan	150	CFM	\$2.47	\$371	\$371
		155315	D3040	Deferred Maintenance	Replace Exhaust Fan	1080	CFM	\$20.02	\$21,626	\$21,626
		155316	D3040	Deferred Maintenance	Replace Exhaust Fan	80	CFM	\$2.47	\$198	\$198
		155317	D3040	Deferred Maintenance	Replace Exhaust Fan	80	CFM	\$2.47	\$198	\$198



## Deficiency Report

Fiscal Year	\$	ID	CSI	Type Name	Description	Materials			Estimate	\$
						Qty	Units	Cost Assessed Cost		
2019	\$15,976	155299	C3020	Deferred Maintenance	Replace Vinyl Sheet	1271	SF	\$8.86	\$11,256	\$11,256
		155300	C3020	Capital Renewal	Replace Vinyl Composite Tile (VCT)	533	SF	\$8.86	\$4,720	\$4,720
2021	\$403,717	155294	B2010	Capital Renewal	Replace Wood Clapboard Siding	5415	SF	\$33.93	\$183,748	\$183,748
		155302	C3030	Capital Renewal	Replace Acoustic Ceiling System - Standard	2643	SF	\$6.27	\$16,580	\$16,580
		155307	D3030	Capital Renewal	Replace Split-System (Air Cooled Condenser Chiller Unit)	5	TON	\$2,041.80	\$10,209	\$10,209
		155308	D3030	Capital Renewal	Replace Split-System (Air Cooled Condenser Chiller Unit)	5	TON	\$2,041.80	\$10,209	\$10,209
		155309	D3030	Capital Renewal	Replace Split-System (Air Cooled Condenser Chiller Unit)	5	TON	\$2,041.80	\$10,209	\$10,209
		155310	D3030	Capital Renewal	Replace Split-System (Air Cooled Condenser Chiller Unit)	3	TON	\$2,041.80	\$6,125	\$6,125
		155311	D3030	Capital Renewal	Replace Split-System (Air Cooled Condenser Chiller Unit)	5	TON	\$2,041.80	\$10,209	\$10,209
		155312	D3030	Capital Renewal	Replace Split-System (Air Cooled Condenser Chiller Unit)	5	TON	\$2,041.80	\$10,209	\$10,209
		155306	D3030	Capital Renewal	Replace Split-System (Air Cooled Condenser Chiller Unit)	5	TON	\$2,041.80	\$10,209	\$10,209
		155318	D5020	Capital Renewal	Replace Interior Light Fixtures - Fluorescent	8667	SF	\$9.00	\$78,034	\$78,034
		155319	E1090	Capital Renewal	Replace Floor Mounted Base Cabinets - Standard	31	LF	\$1,156.82	\$35,861	\$35,861
		155320	E1090	Capital Renewal	Replace Unit Kitchens - Counter Top - Granite	31	LF	\$231.36	\$7,172	\$7,172
		155321	E1090	Capital Renewal	Replace Unit Kitchens - Wall Mounted Cabinets - Standard	31	LF	\$482.01	\$14,942	\$14,942
2024	\$50,965	155298	C3010	Deferred Maintenance	Replace Painted Finish - Standard	18920	SF	\$2.69	\$50,965	\$50,965
<b>Total</b>									<b>Total:</b>	<b>\$601,648</b>

The background features abstract geometric shapes. A large blue triangle is in the top-left corner. A green shape, resembling a stylized 'T' or a cross-section, is positioned in the center. A large green trapezoidal shape occupies the bottom-right area. Thin white lines intersect these shapes, creating a grid-like structure.

# **APPENDIX B:** PHOTOGRAPHIC RECORD



B2011 Exterior Wall Construction:- View of Wood Clapboard Siding



B2021 Windows:- View of Aluminum Window Units - Fixed or Single Hung



B2023 Storefronts:- View of Storefronts - Glazed Aluminum Framed with Swing Doors



B2023 Storefronts:- View of Storefronts - Glazed Aluminum Framed with Swing Doors



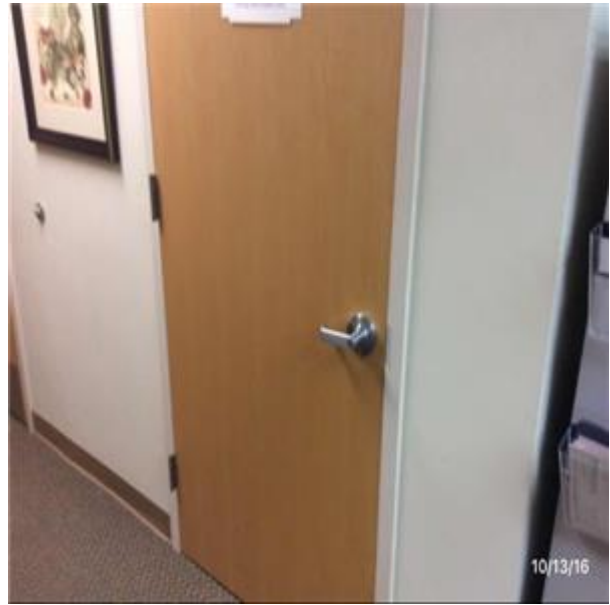
B2031 Glazed Doors & Entrances:- View of Aluminum Glazed Doors - Mall Slider 240 SF



B2039 Other Doors & Entrances:- View of Single HM Doors



B3011 Roof Finishes:- View of Wood Shake Roof



C1021 Interior Doors:- View of Interior Single Wood Door(s)





C2011 Regular Stairs:- View of Regular Stairs - Wood Construction



C3012 Wall Finishes to Interior Walls:- View of Ceramic Wall Tiles



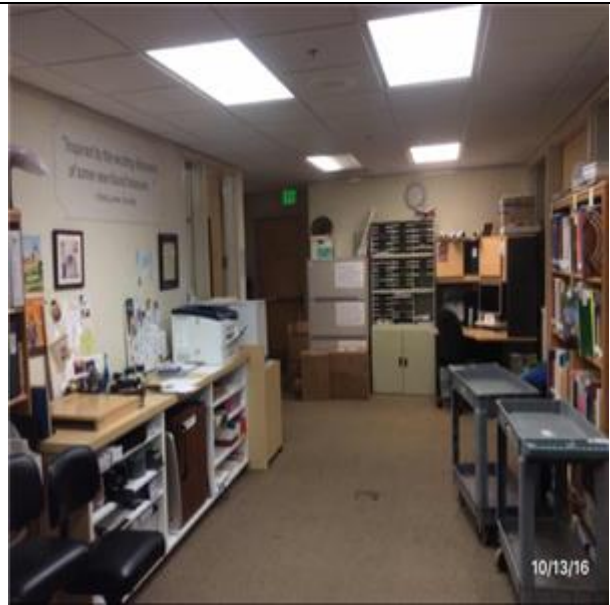
C3024 Flooring:- View of Ceramic Tile



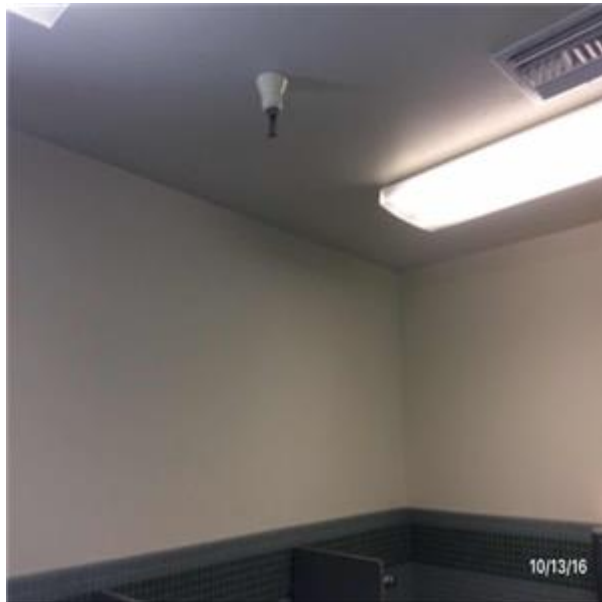
C3024 Flooring:- View of Vinyl Composite Tile (VCT)



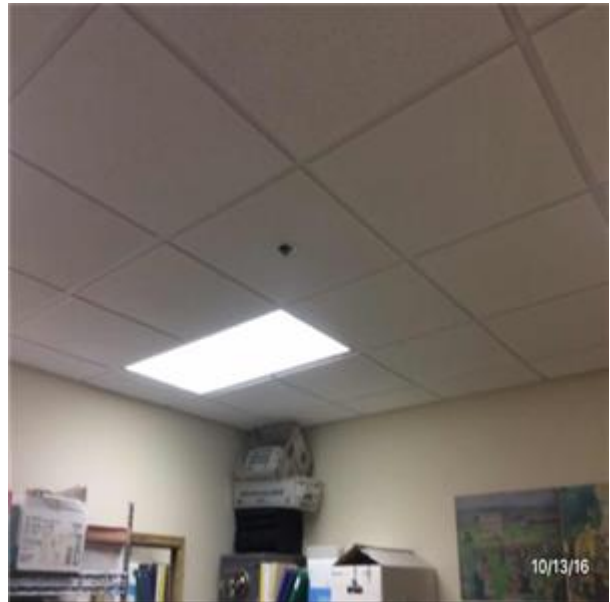
C3024 Flooring:- View of Wood Flooring



C3025 Carpeting:- View of Broadloom Standard without Padding



C3031 Ceiling Finishes:- View of Gypsum Wall Board Ceilings



C3032 Suspended Ceilings:- View of Acoustic Ceiling System - Standard



D2011 Water Closets:- View of Floor Mounted Water Closets



D2011 Water Closets:- View of Wall Mounted Water Closets



D2012 Urinals:- View of Wall Hung Urinals



D2013 Lavatories:- View of Wall Hung Lavatories





D2014 Sinks:- View of Countertop Double Bowl Kitchen Sinks



D2014 Sinks:- View of Countertop Single Bowl Kitchen Sink



D2014 Sinks:- View of Service Sink Floor Mounted



D2022 Hot Water Service:- View of Domestic Hot Water Heater  
- Gas

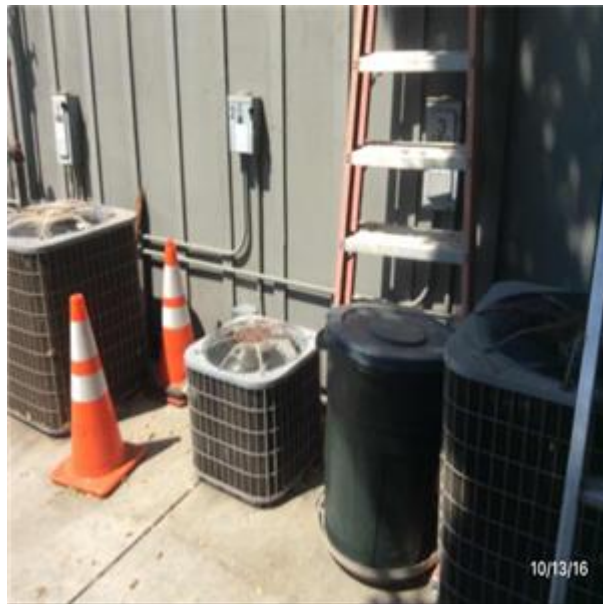




D3021 Boilers:- View of Furnace – Gas



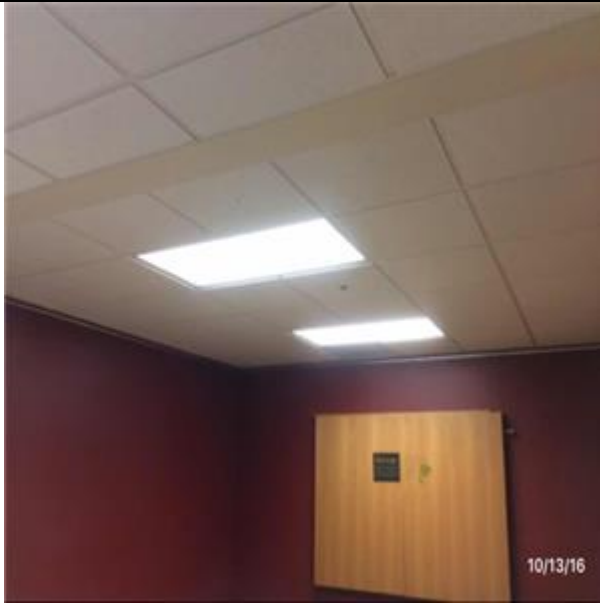
D3032 Direct Expansion Systems:- View of Split-System (Air Cooled Condenser Chiller Unit)



D3032 Direct Expansion Systems:- View of Split-System (Air Cooled Condenser Chiller Unit)



D5012 Low Tension Service & Dist:- View of Panelboard - 120/208volts, 400 to 1200amp



D5022 Lighting Equipment:- View of Interior Light Fixtures -  
Fluorescent



D5022 Lighting Equipment:- View of Interior Light Fixtures -  
Fluorescent



E1095 Unit Kitchens:- View of Floor Mounted Base Cabinets -  
Standard



E1095 Unit Kitchens:- View of Unit Kitchens - Counter Top -  
Granite



---

E1095 Unit Kitchens:- View of Unit Kitchens - Wall Mounted  
Cabinets - Standard

---



**APPENDIX C:**  
DOCUMENT REVIEW AND  
WARRANTY INFORMATION

The following documents were reviewed as part of the facility condition assessment of the History Museum facility:

- + Certain drawings were reviewed on site.



**APPENDIX D:**  
EQUIPMENT TABLES





**APPENDIX E:**  
GLOSSARY OF TERMS



## Acronyms & Glossary of Terms

CMU	Concrete Masonry Unit
BUR	Built-Up Roof
EIFS	Exterior Insulation and Finish System
EPDM	Ethylene Propylene Diene Monomer
SC	Solid Core Doors
HM	Hollow Metal Doors
MH	Man Holes
ABC	Aggregate Base Course
EMT	Electrical Metallic Conduit
EUL	Estimated Useful Life
RUL	Recommended Useful Life
EOL	End of Life
FCNI	Facility Condition Needs Index
CRV	Current Replacement Value
DM	Deferred Maintenance
SF	Square Foot
SY	Square Yards
PSF	Pounds-Per-Square-Foot
PSI	Pounds-Per-Square-Inch
GPF	Gallons Per Flush
NFPA	National Fire Protection Association
FACP	Fire Alarm Control Panel
NAC	Notification Appliance Circuit
FCC	Fire Command Center
HVAC	Heating Ventilating and Air conditioning
VAV	Variable Air Volume
AHU	Main Air Handling Units
FCU	Fan Coil Unit
EF	Exhaust Fan
VFD	Variable Frequency Drives
HP	Horse Power
FSS	Fuel Supply System
MDP	Main Distribution Panel
SES	Service Entrance Switchboard's
NEMA	National Electrical Manufactures Association
HID	Intensity Discharge
EMT	Electrical Metallic Tubing
KVA	kilovolt-ampere
RO	Reverse Osmosis
BTU/HR	British Thermal Units per Hour
kW	Kilowatt
FPM	Feet per Minute (Elevator Speed)
AMP	Amperage

## Acronyms & Glossary of Terms

**BTU** – British Thermal Unit; the energy required to raise the temperature of one pound of water by one degree.

**Building Envelope** - The enclosure of the building that protects the building's interior from the outside elements, namely the exterior walls, roof and soffit areas.

**Building Systems** – Interacting or independent components or assemblies, which from single integrated units, that comprise a building and its site work, such as, pavement and flatwork, structural frame, roofing, exterior walls, plumbing, HVAC, electrical, etc.

**Caulking** – Soft, putty-like material used to fill joints, seams, and cracks.

**Codes** – See building codes.

**Component** – A fully functional portion of a building system, piece of equipment, or building element.

**Deferred Maintenance** – Physical deficiencies that cannot be remedied with routine maintenance, normal operating maintenance, etc., excluding de minimis conditions that generally do not present a material physical deficiency to the subject property.

**Expected Useful Life (EUL)** – The average amount of time in years that an item, component or system is estimated to function when installed new and assuming routine maintenance is practiced.

**Facility** – All or any portion of buildings, structures, site improvements, complexes, equipment, roads, walks, passageways, parking lots, or other real or personal property located on site.

**Flashing** – A thin, impervious sheet of material placed in construction to prevent water penetration or to direct the flow of water. Flashing is used especially at roof hips and valleys, roof penetrations, joints between a roof and a vertical wall, and in masonry walls to direct the flow of water and moisture.

**Remaining Useful Life (RUL)** – A subjective estimate based upon observations, or average estimates of similar items, components, or systems, or a combination thereof, of a number of remaining years that an item, component, or system is established to be able to function in accordance with its intended purpose before warranting replacement. Such period of time is affected by the initial quality of an item, component, or system, the quality of the initial installation, the quality and amount of preventative maintenance exercised, climatic conditions, extent of use, etc.

**Thermal Resistance (R)** – A unit used to measure a material's resistance to heat transfer. The formula for thermal resistance is:  $R = \text{Thickness (in inches)}/K$

**Structural Frame** – The components or building systems that support the building's non-variable forces or weights (dead loads) and variable forces or weights (live loads).

**Warranty** – Legally enforceable assurance of quality or performance of a product or work, or of the duration of satisfactory performance. Warranty guarantee and guaranty are substantially identical in meaning; nevertheless, confusion frequently arises from supposed distinctions attributed to guarantee (or guaranty) being exclusively indicative of duration of satisfactory performance or of a legally enforceable assurance furnished by a manufacturer or other third party. The uniform commercial code provisions on sales (effective in all states except Louisiana) use warranty but recognize the continuation of the use of guarantee and guaranty.



**APPENDIX F:**  
ADA STUDY

Appendix F PH2.2, April 2014

LocationName April 2014	Barrier Location	Feature Type	Feature Code Number	Action Type Text	Action Cost
Blach Gym					
Blach Gym	Floor 1	Door/Gate	8 - 1	Install or modify permanent room signs	\$250.00
Blach Gym	Floor 1	Door/Gate	8 - 1	Adjust door closer	\$500.00
Blach Gym	Floor 1	Door/Gate	8 - 1	Provide sign(s) indicating accessible entries and facilities	\$1,000.00
Blach Gym	Floor 1	Door/Gate	8 - 4	Install or modify permanent room signs	\$250.00
Blach Gym	Floor 1	Door/Gate	8 - 4	Adjust door closer	\$500.00
Blach Gym	Floor 1	Door/Gate	8 - 2	Install or modify permanent room signs	\$250.00
Blach Gym	Floor 1	Door/Gate	8 - 2	Adjust door closer	\$500.00
Blach Gym	Floor 1	Door/Gate	8 - 2	Provide sign(s) indicating accessible entries and facilities	\$1,000.00
Blach Gym	Floor 1	Door/Gate	8 - 3	Install or modify permanent room signs	\$250.00
Blach Gym	Floor 1	Door/Gate	8 - 3	Adjust door closer	\$500.00
Blach Gym	Exterior	Stairway	6 - 1	Install tread striping	\$100.00
City Hall					
City Hall	Exterior	Walk	4 - 1	Widen walk	\$5,100.00
City Hall	Exterior	Ramp	5 - 1	Provide level landing	\$5,000.00
City Hall	Exterior	Ramp	5 - 1	Install or modify handrails	\$5,000.00
City Hall	Exterior	Ramp	5 - 2	Regrade or replace ramp	\$25,000.00
City Hall	Exterior	Ramp	5 - 2	Install warning curb	\$1,500.00
City Hall	Exterior	Ramp	5 - 2	Install or modify handrails	\$5,000.00
City Hall	Exterior	Ramp	5 - 3	Provide level landing	\$5,000.00
City Hall	Exterior	Ramp	5 - 3	Install warning curb	\$1,500.00
City Hall	Exterior	Ramp	5 - 3	Regrade or replace ramp	\$50,000.00
City Hall	Exterior	Stairway	6 - 1	Install tread striping	\$75.00
City Hall	Exterior	Stairway	6 - 1	Install or modify handrails	\$5,000.00
City Hall	Exterior	Stairway	6 - 4	Replace stairs	\$15,000.00
City Hall	Exterior	Stairway	6 - 4	Install tread striping	\$50.00
City Hall	Exterior	Stairway	6 - 4	Install or modify handrails	\$5,000.00
City Hall	Exterior	Outdoor Constructed Features	33 - 1	Increase or provide maneuvering or clear floor area	\$2,000.00
City Hall	Exterior	Outdoor Constructed Features	33 - 2	Increase or provide maneuvering or clear floor area	\$2,000.00
City Hall	Floor 1	Door/Gate	8 - 1	Adjust door closer	\$250.00
City Hall	Floor 1	Door/Gate	8 - 1	Provide sign(s) indicating accessible entries and facilities	\$1,000.00
City Hall	Floor 1	Door/Gate	8 - 2	Install or modify permanent room signs	\$250.00
City Hall	Floor 1	Door/Gate	8 - 2	Provide or modify door kickplate	\$1,000.00
City Hall	Floor 1	Door/Gate	8 - 2	Provide additional strike edge clearance	\$5,000.00
City Hall	Floor 1	Door/Gate	8 - 2	Adjust door closer	\$250.00
City Hall	Floor 1	Door/Gate	8 - 3	Install or modify permanent room signs	\$250.00
City Hall	Floor 1	Door/Gate	8 - 3	Provide additional strike edge clearance	\$5,000.00
City Hall	Floor 1	Door/Gate	8 - 3	Adjust door closer	\$250.00
City Hall	Floor 1	Door/Gate	8 - 4	Provide sign(s) indicating accessible entries and facilities	\$1,000.00
City Hall	Floor 1	Door/Gate	8 - 4	Adjust door closer	\$250.00
City Hall	Floor 1	Stairway	6 - 2	Install tread striping	\$50.00
City Hall	Floor 1	Stairway	6 - 2	Install or modify handrails	\$5,000.00
City Hall	Floor 1	Stairway	6 - 2	Replace stairs	\$20,000.00
City Hall	Floor 1	Stairway	6 - 3	Install tread striping	\$50.00
City Hall	Floor 1	Stairway	6 - 3	Install or modify handrails	\$0.00
City Hall	Floor 1	Stairway	6 - 3	Replace stairs	\$0.00
City Hall	Floor 1	Built-in Elements	16 - 1	Provide an accessible counter	\$7,500.00
City Hall	Floor 1	Multiple User Restroom	19 - 1	Install sign	\$500.00
City Hall	Floor 1	Multiple User Restroom	19 - 1	Replace or reposition dispensers or mirrors	\$300.00
City Hall	Floor 1	Multiple User Restroom	19 - 1	Modify lavatory/counter clearances	\$2,500.00
City Hall	Floor 1	Multiple User Restroom	19 - 1	Provide additional strike edge clearance	\$5,000.00
City Hall	Floor 1	Multiple User Restroom	19 - 1	Provide or replace stall door hardware	\$250.00
City Hall	Floor 1	Multiple User Restroom	19 - 1	Reposition clothing hooks	\$100.00
City Hall	Floor 1	Multiple User Restroom	19 - 1	Replace or modify grab bars	\$1,000.00
City Hall	Floor 1	Multiple User Restroom	19 - 1	Reposition toilet flush controls	\$1,000.00
City Hall	Floor 1	Multiple User Restroom	19 - 2	Install sign	\$500.00
City Hall	Floor 1	Multiple User Restroom	19 - 2	Replace or reposition dispensers or mirrors	\$300.00
City Hall	Floor 1	Multiple User Restroom	19 - 2	Modify lavatory/counter clearances	\$2,500.00
City Hall	Floor 1	Multiple User Restroom	19 - 2	Provide additional strike edge clearance	\$5,000.00
City Hall	Floor 1	Multiple User Restroom	19 - 2	Provide or replace stall door hardware	\$250.00
City Hall	Floor 1	Multiple User Restroom	19 - 2	Reposition clothing hooks	\$100.00
City Hall	Floor 1	Multiple User Restroom	19 - 2	Replace or modify grab bars	\$1,000.00
City Hall	Exterior	Ramp	5 - 4	Regrade or replace ramp	\$30,000.00
City Hall	Exterior	Ramp	5 - 4	Install or modify handrails	\$5,000.00
City Hall	Floor 1	Building Level / Lift	12 - 1	Install ramp or lift	\$35,000.00
Egan Gym					
Egan Gym	Exterior	Ramp	5 - 1	Install or modify handrails	\$5,000.00
Egan Gym	Exterior	Ramp	5 - 1	Regrade or replace ramp	\$15,000.00
Egan Gym	Floor 1	Door/Gate	8 - 1	Adjust door closer	\$250.00
Egan Gym	Floor 1	Door/Gate	8 - 1	Install or modify permanent room signs	\$250.00
Egan Gym	Floor 1	Door/Gate	8 - 1	Provide sign(s) indicating accessible entries and facilities	\$1,000.00
Egan Gym	Floor 1	Door/Gate	8 - 2	Adjust door closer	\$250.00
Egan Gym	Floor 1	Door/Gate	8 - 2	Install or modify permanent room signs	\$250.00
Egan Gym	Floor 1	Door/Gate	8 - 3	Adjust door closer	\$250.00

Appendix F PH2.2, April 2014

Egan Gym	Floor 1	Door/Gate	8 - 3	Install or modify permanent room signs	\$250.00
Egan Gym	Floor 1	Door/Gate	8 - 4	Adjust door closer	\$250.00
Egan Gym	Floor 1	Door/Gate	8 - 4	Install or modify permanent room signs	\$250.00
Egan Gym	Floor 1	Door/Gate	8 - 5	Adjust door closer	\$250.00
Egan Gym	Floor 1	Door/Gate	8 - 5	Install or modify permanent room signs	\$250.00
Garden House	Floor 1				
Garden House	Floor 1	Building Level / Lift	12 - 1	Install ramp or lift	\$35,000.00
Garden House	Floor 1	Stairway	6 - 1	Install or modify handrails	\$5,000.00
Garden House	Floor 1	Stairway	6 - 2	Install or modify handrails	\$5,000.00
Garden House	Floor 1	Single User Restroom	20 - 1	Install sign	\$500.00
Garden House	Floor 1	Single User Restroom	20 - 2	Provide an accessible path of travel	\$25,000.00
Garden House	Floor 1	Single User Restroom	20 - 2	Install sign	\$500.00
Garden House	Floor 1	Built-in Elements	16 - 1	Provide an accessible counter	\$5,000.00
Garden House	Floor 1	Multiple User Restroom	19 - 1	Install sign	\$500.00
Garden House	Floor 1	Multiple User Restroom	19 - 2	Install sign	\$500.00
Garden House	Floor 1	Stairway	6 - 3	Install or modify handrails	\$5,000.00
Garden House	Floor 1	Stairway	6 - 3	Replace stairs	\$25,000.00
Garden House	Floor 1	Kitchen	25 - 1	Modify lavatory/counter clearances	\$5,000.00
Garden House	Floor 1	Drinking Fountain	10 - 1	Adjust water stream	\$100.00
Garden House	Floor 1	Door/Gate	8 - 1	Provide or modify door kickplate	\$500.00
Garden House	Floor 1	Door/Gate	8 - 1	Adjust door closer	\$250.00
Garden House	Floor 1	Door/Gate	8 - 1	Enlarge door opening	\$5,000.00
Garden House	Floor 1	Door/Gate	8 - 1	Install or modify permanent room signs	\$250.00
Garden House	Floor 1	Door/Gate	8 - 1	Provide additional strike edge clearance	\$5,000.00
Garden House	Floor 1	Door/Gate	8 - 2	Adjust door closer	\$250.00
Garden House	Floor 1	Door/Gate	8 - 2	Replace or modify door threshold	\$1,500.00
Garden House	Floor 1	Door/Gate	8 - 3	Replace or adjust door hardware	\$500.00
Garden House	Floor 1	Door/Gate	8 - 4	Provide or modify door kickplate	\$500.00
Garden House	Floor 1	Door/Gate	8 - 4	Enlarge door opening	\$5,000.00
Garden House	Floor 1	Door/Gate	8 - 4	Install or modify permanent room signs	\$250.00
Garden House	Floor 1	Door/Gate	8 - 5	Adjust door closer	\$250.00
Garden House	Floor 1	Door/Gate	8 - 5	Provide or modify door kickplate	\$500.00
Garden House	Floor 1	Door/Gate	8 - 5	Enlarge door opening	\$5,000.00
Garden House	Floor 1	Door/Gate	8 - 5	Replace or modify door threshold	\$1,500.00
Garden House	Floor 1	Door/Gate	8 - 5	Install or modify permanent room signs	\$250.00
Garden House	Floor 1	Door/Gate	8 - 6	Adjust door closer	\$250.00
Garden House	Floor 1	Door/Gate	8 - 6	Provide or modify door kickplate	\$500.00
Garden House	Floor 1	Door/Gate	8 - 6	Replace or modify door threshold	\$1,500.00
Grant Park Center	Floor 1				
Grant Park Center	Floor 1	Stairway	6 - 1	Replace stairs	\$6,000.00
Grant Park Center	Floor 1	Stairway	6 - 1	Install or modify handrails	\$5,000.00
Grant Park Center	Floor 1	Stairway	6 - 2	Replace stairs	\$6,000.00
Grant Park Center	Floor 1	Stairway	6 - 2	Install or modify handrails	\$5,000.00
Grant Park Center	Floor 1	Door/Gate	8 - 1	Adjust door closer	\$250.00
Grant Park Center	Floor 1	Door/Gate	8 - 7	Adjust door closer	\$250.00
Grant Park Center	Floor 1	Door/Gate	8 - 3	Adjust door closer	\$250.00
Grant Park Center	Floor 1	Door/Gate	8 - 3	Provide or modify door kickplate	\$500.00
Grant Park Center	Floor 1	Door/Gate	8 - 5	Adjust door closer	\$250.00
Grant Park Center	Floor 1	Door/Gate	8 - 5	Provide or modify door kickplate	\$500.00
Grant Park Center	Floor 1	Door/Gate	8 - 2	Provide an accessible path of travel	\$10,000.00
Grant Park Center	Floor 1	Door/Gate	8 - 8	Provide an accessible path of travel	\$10,000.00
Grant Park Center	Floor 1	Door/Gate	8 - 4	Provide an accessible path of travel	\$10,000.00
Grant Park Center	Floor 1	Door/Gate	8 - 4	Provide or modify door kickplate	\$500.00
Grant Park Center	Floor 1	Door/Gate	8 - 6	Provide an accessible path of travel	\$10,000.00
Grant Park Center	Floor 1	Door/Gate	8 - 6	Provide or modify door kickplate	\$500.00
Grant Park Center	Floor 1	Door/Gate	8 - 9	Adjust door closer	\$250.00
Grant Park Center	Floor 1	Door/Gate	8 - 10	Adjust door closer	\$250.00
Grant Park Center	Floor 1	Door/Gate	8 - 10	Provide additional strike edge clearance	\$5,000.00
Grant Park Center	Floor 1	Door/Gate	8 - 11	Replace or adjust door hardware	\$1,000.00
Grant Park Center	Floor 1	Door/Gate	8 - 11	Provide sign(s) indicating accessible entries and facilities	\$250.00
Grant Park Center	Floor 1	Door/Gate	8 - 11	Install or modify permanent room signs	\$250.00
Grant Park Center	Floor 1	Door/Gate	8 - 11	Adjust door closer	\$250.00
Grant Park Center	Floor 1	Door/Gate	8 - 12	Replace or adjust door hardware	\$1,000.00
Grant Park Center	Floor 1	Door/Gate	8 - 12	Install or modify permanent room signs	\$250.00
Grant Park Center	Floor 1	Door/Gate	8 - 12	Adjust door closer	\$250.00
Grant Park Center	Floor 1	Door/Gate	8 - 13	Replace or adjust door hardware	\$1,000.00
Grant Park Center	Floor 1	Door/Gate	8 - 13	Install or modify permanent room signs	\$250.00
Grant Park Center	Floor 1	Door/Gate	8 - 14	Replace or adjust door hardware	\$1,000.00
Grant Park Center	Floor 1	Door/Gate	8 - 14	Install or modify permanent room signs	\$250.00
Grant Park Center	Floor 1	Door/Gate	8 - 14	Adjust door closer	\$250.00
Grant Park Center	Floor 1	Door/Gate	8 - 15	Replace or adjust door hardware	\$1,000.00
Grant Park Center	Floor 1	Door/Gate	8 - 15	Adjust door closer	\$250.00
Grant Park Center	Floor 1	Door/Gate	8 - 15	Provide additional strike edge clearance	\$5,000.00
Grant Park Center	Floor 1	Door/Gate	8 - 15	Install or modify permanent room signs	\$250.00
Grant Park Center	Floor 1	Door/Gate	8 - 16	Replace or modify door threshold	\$1,500.00
Grant Park Center	Floor 1	Door/Gate	8 - 16	Replace or adjust door hardware	\$1,000.00
Grant Park Center	Floor 1	Door/Gate	8 - 16	Adjust door closer	\$250.00
Grant Park Center	Floor 1	Door/Gate	8 - 16	Increase or provide maneuvering or clear floor area	\$2,000.00
Grant Park Center	Floor 1	Door/Gate	8 - 16	Provide additional strike edge clearance	\$5,000.00
Grant Park Center	Floor 1	Door/Gate	8 - 16	Install or modify permanent room signs	\$250.00

Appendix F PH2.2, April 2014

Grant Park Center	Floor 1	Door/Gate	8 - 17	Enlarge door opening	\$5,000.00
Grant Park Center	Floor 1	Door/Gate	8 - 17	Increase or provide maneuvering or clear floor area	\$2,000.00
Grant Park Center	Floor 1	Door/Gate	8 - 18	Provide sign(s) indicating accessible entries and facilities	\$1,000.00
Grant Park Center	Floor 1	Door/Gate	8 - 18	Install or modify permanent room signs	\$250.00
Grant Park Center	Floor 1	Multiple User Restroom	19 - 1	Install sign	\$500.00
Grant Park Center	Floor 1	Multiple User Restroom	19 - 1	Replace or reposition dispensers or mirrors	\$450.00
Grant Park Center	Floor 1	Multiple User Restroom	19 - 1	Replace or adjust water controls	\$500.00
Grant Park Center	Floor 1	Multiple User Restroom	19 - 1	Provide or replace stall door hardware	\$250.00
Grant Park Center	Floor 1	Multiple User Restroom	19 - 1	Reposition toilet flush controls	\$1,000.00
Grant Park Center	Floor 1	Multiple User Restroom	19 - 1	Replace or modify grab bars	\$1,000.00
Grant Park Center	Floor 1	Multiple User Restroom	19 - 1	Increase or provide maneuvering or clear floor area	\$2,000.00
Grant Park Center	Floor 1	Multiple User Restroom	19 - 1	Reposition controls and outlets	\$2,000.00
Grant Park Center	Floor 1	Multiple User Restroom	19 - 2	Install sign	\$500.00
Grant Park Center	Floor 1	Multiple User Restroom	19 - 2	Replace or reposition dispensers or mirrors	\$450.00
Grant Park Center	Floor 1	Multiple User Restroom	19 - 2	Replace or adjust water controls	\$500.00
Grant Park Center	Floor 1	Multiple User Restroom	19 - 2	Provide or replace stall door hardware	\$250.00
Grant Park Center	Floor 1	Multiple User Restroom	19 - 2	Replace or modify grab bars	\$1,000.00
Grant Park Center	Floor 1	Multiple User Restroom	19 - 2	Reposition controls and outlets	\$2,000.00
Grant Park Center	Floor 1	Multiple User Restroom	19 - 2	Replace or reposition fixtures	\$1,500.00
Grant Park Center	Floor 1	Multiple User Restroom	19 - 2	Replace or reposition urinal	\$3,000.00
Grant Park Center	Floor 1	Kitchen	25 - 1	Modify lavatory/counter clearances	\$2,500.00
Grant Park Center	Floor 1	Kitchen	25 - 1	Replace or reposition dispensers or mirrors	\$150.00
Grant Park Center	Floor 1	Kitchen	25 - 2	Modify lavatory/counter clearances	\$2,500.00
Grant Park Center	Floor 1	Kitchen	25 - 2	Replace or reposition dispensers or mirrors	\$150.00
Grant Park Center	Floor 1	Kitchen	25 - 2	Replace or adjust water controls	\$500.00
Grant Park Center	Floor 1	Kitchen	25 - 3	Modify lavatory/counter clearances	\$2,500.00
Grant Park Center	Floor 1	Kitchen	25 - 3	Replace or reposition dispensers or mirrors	\$150.00
Grant Park Center	Floor 1	Kitchen	25 - 3	Replace or adjust water controls	\$500.00
Grant Park Center	Floor 1	Kitchen	25 - 4	Modify lavatory/counter clearances	\$2,500.00
Grant Park Center	Floor 1	Kitchen	25 - 4	Replace or reposition dispensers or mirrors	\$150.00
Grant Park Center	Floor 1	Kitchen	25 - 4	Replace or adjust water controls	\$500.00
Grant Park Center	Floor 1	Kitchen	25 - 5	Provide an accessible counter	\$5,000.00
Grant Park Center	Floor 1	Kitchen	25 - 5	Modify lavatory/counter clearances	\$2,500.00
Grant Park Center	Floor 1	Kitchen	25 - 5	Replace or reposition dispensers or mirrors	\$150.00
Grant Park Center	Floor 1	Building Level / Lift	12 - 1	Install ramp or lift	\$35,000.00
Heritage Oaks Park	Exterior				
Heritage Oaks Park	Exterior	Multiple User Restroom	19 - 1	Replace or reposition dispensers or mirrors	\$600.00
Heritage Oaks Park	Exterior	Multiple User Restroom	19 - 1	Replace or modify grab bars	\$1,000.00
Heritage Oaks Park	Exterior	Multiple User Restroom	19 - 1	Provide or replace stall door hardware	\$250.00
Heritage Oaks Park	Exterior	Multiple User Restroom	19 - 1	Replace or adjust water controls	\$500.00
Heritage Oaks Park	Exterior	Multiple User Restroom	19 - 1	Modify lavatory/counter clearances	\$2,500.00
Heritage Oaks Park	Exterior	Multiple User Restroom	19 - 1	Install sign	\$500.00
Heritage Oaks Park	Exterior	Multiple User Restroom	19 - 2	Replace or reposition dispensers or mirrors	\$600.00
Heritage Oaks Park	Exterior	Multiple User Restroom	19 - 2	Replace or modify grab bars	\$1,000.00
Heritage Oaks Park	Exterior	Multiple User Restroom	19 - 2	Provide or replace stall door hardware	\$250.00
Heritage Oaks Park	Exterior	Multiple User Restroom	19 - 2	Replace or adjust water controls	\$500.00
Heritage Oaks Park	Exterior	Multiple User Restroom	19 - 2	Modify lavatory/counter clearances	\$2,500.00
Heritage Oaks Park	Exterior	Multiple User Restroom	19 - 2	Install sign	\$500.00
Classroom 13 - 15					
Hillview Community Center	Floor 1	Kitchen	25 - 13	Replace or adjust water controls	\$500.00
Hillview Community Center	Floor 1	Kitchen	25 - 13	Replace or reposition dispensers or mirrors	\$150.00
Hillview Community Center	Floor 1	Kitchen	25 - 13	Modify lavatory/counter clearances	\$2,500.00
Hillview Community Center	Floor 1	Kitchen	25 - 15	Replace or adjust water controls	\$500.00
Hillview Community Center	Floor 1	Kitchen	25 - 15	Replace or reposition dispensers or mirrors	\$300.00
Hillview Community Center	Floor 1	Kitchen	25 - 15	Modify lavatory/counter clearances	\$2,500.00
Hillview Community Center	Floor 1	Door/Gate	8 - 113	Enlarge door opening	\$5,000.00
Hillview Community Center	Floor 1	Door/Gate	8 - 113	Replace or adjust door hardware	\$500.00
Hillview Community Center	Floor 1	Door/Gate	8 - 113	Provide or modify door kickplate	\$500.00
Hillview Community Center	Floor 1	Door/Gate	8 - 115	Enlarge door opening	\$5,000.00
Hillview Community Center	Floor 1	Door/Gate	8 - 15	Enlarge door opening	\$5,000.00
Hillview Community Center	Floor 1	Door/Gate	8 - 15	Adjust door closer	\$250.00
Hillview Community Center	Floor 1	Door/Gate	8 - 15	Provide or modify door kickplate	\$500.00
Hillview Community Center	Floor 1	Door/Gate	8 - 13	Enlarge door opening	\$5,000.00
Hillview Community Center	Floor 1	Door/Gate	8 - 13	Replace or adjust door hardware	\$500.00
Hillview Community Center	Floor 1	Door/Gate	8 - 13	Provide or modify door kickplate	\$500.00
Restroom					
Hillview Community Center	Floor 1	Multiple User Restroom	19 - 3	Replace or reposition dispensers or mirrors	\$150.00
Hillview Community Center	Floor 1	Multiple User Restroom	19 - 3	Provide or replace stall door hardware	\$250.00
Hillview Community Center	Floor 1	Multiple User Restroom	19 - 3	Replace or modify grab bars	\$1,000.00
Hillview Community Center	Floor 1	Multiple User Restroom	19 - 3	Replace or reposition fixtures	\$1,500.00
Hillview Community Center	Floor 1	Multiple User Restroom	19 - 3	Reposition toilet flush controls	\$1,000.00
Hillview Community Center	Floor 1	Multiple User Restroom	19 - 3	Widen corridor	\$10,000.00
Hillview Community Center	Floor 1	Multiple User Restroom	19 - 3	Modify stall partitions and doors	\$1,500.00
Hillview Community Center	Floor 1	Multiple User Restroom	19 - 4	Replace or reposition dispensers or mirrors	\$150.00
Hillview Community Center	Floor 1	Multiple User Restroom	19 - 4	Provide or replace stall door hardware	\$250.00
Hillview Community Center	Floor 1	Multiple User Restroom	19 - 4	Replace or modify grab bars	\$1,000.00
Hillview Community Center	Floor 1	Multiple User Restroom	19 - 4	Replace or reposition fixtures	\$1,500.00
Hillview Community Center	Floor 1	Multiple User Restroom	19 - 4	Reposition toilet flush controls	\$1,000.00

Appendix F PH2.2, April 2014

Hillview Community Center	Floor 1	Multiple User Restroom	19 - 4	Widen corridor	\$10,000.00
Hillview Community Center	Floor 1	Multiple User Restroom	19 - 4	Replace or reposition urinal	\$3,000.00
Classroom 16-18					
Hillview Community Center	Floor 1	Door/Gate	8 - 66	Replace or adjust door hardware	\$500.00
Hillview Community Center	Floor 1	Door/Gate	8 - 66	Enlarge door opening	\$5,000.00
Hillview Community Center	Floor 1	Door/Gate	8 - 66	Replace or modify door threshold	\$1,500.00
Hillview Community Center	Floor 1	Door/Gate	8 - 65	Replace or adjust door hardware	\$500.00
Hillview Community Center	Floor 1	Door/Gate	8 - 65	Enlarge door opening	\$5,000.00
Hillview Community Center	Floor 1	Door/Gate	8 - 67	Enlarge door opening	\$5,000.00
Hillview Community Center	Floor 1	Single User Restroom	20 - 1	Widen corridor	\$10,000.00
Hillview Community Center	Floor 1	Single User Restroom	20 - 1	Increase or provide maneuvering or clear floor area	\$2,000.00
Hillview Community Center	Floor 1	Single User Restroom	20 - 1	Replace or reposition dispensers or mirrors	\$300.00
Hillview Community Center	Floor 1	Kitchen	25 - 1	Replace or reposition dispensers or mirrors	\$150.00
Hillview Community Center	Floor 1	Kitchen	25 - 1	Modify lavatory/counter clearances	\$2,500.00
Hillview Community Center	Floor 1	Kitchen	25 - 18	Replace or reposition dispensers or mirrors	\$300.00
Hillview Community Center	Floor 1	Kitchen	25 - 18	Modify lavatory/counter clearances	\$2,500.00
Hillview Community Center	Floor 1	Kitchen	25 - 16	Replace or adjust water controls	\$500.00
Hillview Community Center	Floor 1	Kitchen	25 - 16	Replace or reposition dispensers or mirrors	\$300.00
Hillview Community Center	Floor 1	Kitchen	25 - 16	Modify lavatory/counter clearances	\$2,500.00
Hillview Community Center	Floor 1	Kitchen	25 - 17	Replace or adjust water controls	\$500.00
Hillview Community Center	Floor 1	Kitchen	25 - 17	Replace or reposition dispensers or mirrors	\$300.00
Hillview Community Center	Floor 1	Kitchen	25 - 17	Modify lavatory/counter clearances	\$2,500.00
Hillview Community Center	Floor 1	Door/Gate	8 - 18	Replace or adjust door hardware	\$500.00
Hillview Community Center	Floor 1	Door/Gate	8 - 18	Enlarge door opening	\$5,000.00
Hillview Community Center	Floor 1	Door/Gate	8 - 18	Replace or modify door threshold	\$1,500.00
Hillview Community Center	Floor 1	Door/Gate	8 - 118	Replace or adjust door hardware	\$500.00
Hillview Community Center	Floor 1	Door/Gate	8 - 118	Enlarge door opening	\$5,000.00
Hillview Community Center	Floor 1	Door/Gate	8 - 118	Replace or modify door threshold	\$1,500.00
Hillview Community Center	Floor 1	Door/Gate	8 - 17	Replace or adjust door hardware	\$500.00
Hillview Community Center	Floor 1	Door/Gate	8 - 17	Enlarge door opening	\$5,000.00
Hillview Community Center	Floor 1	Door/Gate	8 - 17	Replace or modify door threshold	\$1,500.00
Hillview Community Center	Floor 1	Door/Gate	8 - 117	Replace or adjust door hardware	\$500.00
Hillview Community Center	Floor 1	Door/Gate	8 - 117	Enlarge door opening	\$5,000.00
Hillview Community Center	Floor 1	Door/Gate	8 - 16	Enlarge door opening	\$5,000.00
Hillview Community Center	Floor 1	Door/Gate	8 - 16	Replace or adjust door hardware	\$500.00
Hillview Community Center	Floor 1	Door/Gate	8 - 16	Provide or modify door kickplate	\$500.00
Hillview Community Center	Floor 1	Door/Gate	8 - 16	Replace or modify door threshold	\$1,500.00
Hillview Community Center	Floor 1	Door/Gate	8 - 116	Enlarge door opening	\$5,000.00
Hillview Community Center	Floor 1	Door/Gate	8 - 116	Adjust door closer	\$250.00
Hillview Community Center	Floor 1	Door/Gate	8 - 116	Provide or modify door kickplate	\$500.00
Hillview Community Center	Floor 1	Door/Gate	8 - 116	Replace or modify door threshold	\$1,500.00

Appendix F PH2.2, April 2014

Classroom 7 - 9					
Hillview Community Center	Floor 1	Door/Gate	8 - 8	Enlarge door opening	\$5,000.00
Hillview Community Center	Floor 1	Door/Gate	8 - 8	Replace or adjust door hardware	\$500.00
Hillview Community Center	Floor 1	Door/Gate	8 - 8	Provide or modify door kickplate	\$500.00
Hillview Community Center	Floor 1	Door/Gate	8 - 8	Replace or modify door threshold	\$1,500.00
Hillview Community Center	Floor 1	Door/Gate	8 - 108	Enlarge door opening	\$5,000.00
Hillview Community Center	Floor 1	Door/Gate	8 - 108	Replace or adjust door hardware	\$500.00
Hillview Community Center	Floor 1	Door/Gate	8 - 108	Provide or modify door kickplate	\$500.00
Hillview Community Center	Floor 1	Door/Gate	8 - 108	Replace or modify door threshold	\$1,500.00
Hillview Community Center	Floor 1	Door/Gate	8 - 7	Replace or adjust door hardware	\$500.00
Hillview Community Center	Floor 1	Door/Gate	8 - 107	Replace or adjust door hardware	\$500.00
Hillview Community Center	Floor 1	Door/Gate	8 - 9	Replace or adjust door hardware	\$500.00
Hillview Community Center	Floor 1	Door/Gate	8 - 109	Replace or adjust door hardware	\$500.00
Senior Center					
Hillview Community Center	Floor 1	Kitchen	25 - 11	Modify lavatory/counter clearances	\$2,500.00
Hillview Community Center	Floor 1	Kitchen	25 - 12	Replace or reposition dispensers or mirrors	\$150.00
Hillview Community Center	Floor 1	Kitchen	25 - 12	Modify lavatory/counter clearances	\$2,500.00
Hillview Community Center	Floor 1	Door/Gate	8 - 11	Enlarge door opening	\$5,000.00
Hillview Community Center	Floor 1	Door/Gate	8 - 11	Provide or modify door kickplate	\$500.00
Hillview Community Center	Floor 1	Door/Gate	8 - 111	Enlarge door opening	\$5,000.00
Hillview Community Center	Floor 1	Door/Gate	8 - 111	Provide or modify door kickplate	\$500.00
Hillview Community Center	Floor 1	Door/Gate	8 - 10	Enlarge door opening	\$5,000.00
Hillview Community Center	Floor 1	Door/Gate	8 - 110	Enlarge door opening	\$5,000.00
Hillview Community Center	Floor 1	Door/Gate	8 - 12	Enlarge door opening	\$5,000.00
Hillview Community Center	Floor 1	Door/Gate	8 - 12	Provide or modify door kickplate	\$500.00
Hillview Community Center	Floor 1	Door/Gate	8 - 12	Install or modify permanent room signs	\$250.00
Hillview Community Center	Floor 1	Door/Gate	8 - 112	Replace or adjust door hardware	\$500.00
Hillview Community Center	Floor 1	Door/Gate	8 - 112	Adjust door closer	\$250.00
Hillview Community Center	Floor 1	Door/Gate	8 - 112	Replace or modify door threshold	\$1,500.00
Hal Brady Hall					
Hillview Community Center	Floor 1	Multiple User Restroom	19 - 1	Install sign	\$500.00
Hillview Community Center	Floor 1	Multiple User Restroom	19 - 1	Modify lavatory/counter clearances	\$2,500.00
Hillview Community Center	Floor 1	Multiple User Restroom	19 - 1	Replace or reposition dispensers or mirrors	\$300.00
Hillview Community Center	Floor 1	Multiple User Restroom	19 - 1	Reposition toilet flush controls	\$1,000.00
Hillview Community Center	Floor 1	Multiple User Restroom	19 - 1	Provide or replace stall door hardware	\$250.00
Hillview Community Center	Floor 1	Multiple User Restroom	19 - 1	Replace or modify grab bars	\$1,000.00
Hillview Community Center	Floor 1	Multiple User Restroom	19 - 1	Modify stall partitions and doors	\$1,500.00
Hillview Community Center	Floor 1	Multiple User Restroom	19 - 2	Install sign	\$500.00
Hillview Community Center	Floor 1	Multiple User Restroom	19 - 2	Modify lavatory/counter clearances	\$2,500.00
Hillview Community Center	Floor 1	Multiple User Restroom	19 - 2	Replace or reposition dispensers or mirrors	\$150.00
Hillview Community Center	Floor 1	Multiple User Restroom	19 - 2	Reposition toilet flush controls	\$1,000.00
Hillview Community Center	Floor 1	Multiple User Restroom	19 - 2	Provide or replace stall door hardware	\$250.00
Hillview Community Center	Floor 1	Multiple User Restroom	19 - 2	Replace or modify grab bars	\$1,000.00
Hillview Community Center	Floor 1	Multiple User Restroom	19 - 2	Modify stall partitions and doors	\$1,500.00
Hillview Community Center	Floor 1	Multiple User Restroom	19 - 2	Replace or reposition fixtures	\$1,500.00
Hillview Community Center	Floor 1	Door/Gate	8 - 2	Install or modify permanent room signs	\$250.00
Hillview Community Center	Floor 1	Door/Gate	8 - 2	Adjust door closer	\$250.00
Hillview Community Center	Floor 1	Door/Gate	8 - 50	Install or modify permanent room signs	\$250.00
Hillview Community Center	Floor 1	Door/Gate	8 - 51	Install or modify permanent room signs	\$250.00
Hillview Community Center	Floor 1	Door/Gate	8 - 52	Install or modify permanent room signs	\$250.00
Hillview Community Center	Floor 1	Door/Gate	8 - 52	Adjust door closer	\$250.00
Children's Corner					
Hillview Community Center	Floor 1	Kitchen	25 - 4	Replace or reposition dispensers or mirrors	\$150.00
Hillview Community Center	Floor 1	Kitchen	25 - 4	Modify lavatory/counter clearances	\$2,500.00
Hillview Community Center	Floor 1	Door/Gate	8 - 53	Replace or adjust door hardware	\$500.00
Hillview Community Center	Floor 1	Door/Gate	8 - 54	Replace or adjust door hardware	\$500.00
Hillview Community Center	Floor 1	Door/Gate	8 - 54	Provide or modify door kickplate	\$500.00
Multi-Purpose Room					
Hillview Community Center	Floor 1	Kitchen	25 - 3	Modify lavatory/counter clearances	\$2,500.00
Hillview Community Center	Floor 1	Kitchen	25 - 3	Replace or reposition dispensers or mirrors	\$150.00
Hillview Community Center	Floor 1	Door/Gate	8 - 64	Replace or adjust door hardware	\$500.00
Hillview Community Center	Floor 1	Door/Gate	8 - 64	Enlarge door opening	\$5,000.00
Hillview Community Center	Floor 1	Door/Gate	8 - 64	Adjust door closer	\$250.00
Hillview Community Center	Floor 1	Door/Gate	8 - 64	Provide additional strike edge clearance	\$5,000.00
Hillview Community Center	Floor 1	Door/Gate	8 - 64	Provide or modify door kickplate	\$500.00
Hillview Community Center	Floor 1	Door/Gate	8 - 63	Install or modify permanent room signs	\$250.00
Hillview Community Center	Floor 1	Door/Gate	8 - 63	Enlarge door opening	\$5,000.00
Hillview Community Center	Floor 1	Door/Gate	8 - 63	Provide or modify door kickplate	\$500.00
Hillview Community Center	Floor 1	Door/Gate	8 - 62	Install or modify permanent room signs	\$250.00
Hillview Community Center	Floor 1	Door/Gate	8 - 62	Enlarge door opening	\$5,000.00
Hillview Community Center	Floor 1	Door/Gate	8 - 62	Provide or modify door kickplate	\$500.00
Hillview Community Center	Floor 1	Door/Gate	8 - 62	Adjust door closer	\$250.00
Hillview Community Center	Floor 1	Door/Gate	8 - 61	Install or modify permanent room signs	\$250.00
Hillview Community Center	Floor 1	Door/Gate	8 - 61	Enlarge door opening	\$5,000.00
Hillview Community Center	Floor 1	Door/Gate	8 - 61	Adjust door closer	\$250.00
Hillview Community Center	Floor 1	Stairway	6 - 1	Replace stairs	\$15,000.00
Hillview Community Center	Floor 1	Stairway	6 - 1	Repair stair nosings	\$4,000.00
Hillview Community Center	Floor 1	Stairway	6 - 1	Install tread striping	\$500.00
Hillview Community Center	Floor 1	Stairway	6 - 1	Install or modify handrails	\$5,000.00
Hillview Community Center	Floor 1	Stairway	6 - 2	Replace stairs	\$15,000.00
Hillview Community Center	Floor 1	Stairway	6 - 2	Repair stair nosings	\$4,000.00
Hillview Community Center	Floor 1	Stairway	6 - 2	Install tread striping	\$500.00
Hillview Community Center	Floor 1	Stairway	6 - 2	Install or modify handrails	\$5,000.00
Hillview Community Center	Floor 1	Stairway	6 - 3	Replace stairs	\$15,000.00
Hillview Community Center	Floor 1	Stairway	6 - 3	Install or modify handrails	\$5,000.00



Appendix F PH2.2, April 2014

Hillview Community Center	Floor 1	Stairway	6 - 3	Repair stair nosings	\$4,000.00
Hillview Community Center	Floor 1	Door/Gate	8 - 59	Increase or provide maneuvering or clear floor area	\$2,000.00
Hillview Community Center	Floor 1	Door/Gate	8 - 59	Enlarge door opening	\$5,000.00
Hillview Community Center	Floor 1	Door/Gate	8 - 59	Adjust door closer	\$250.00
Park's Office / Children Corner					
Hillview Community Center	Floor 1	Door/Gate	8 - 55	Replace or adjust door hardware	\$500.00
Hillview Community Center	Floor 1	Door/Gate	8 - 55	Provide or modify door kickplate	\$500.00
Hillview Community Center	Floor 1	Door/Gate	8 - 55	Adjust door closer	\$250.00
Hillview Community Center	Floor 1	Door/Gate	8 - 55	Replace or modify door threshold	\$1,500.00
Hillview Community Center	Floor 1	Door/Gate	8 - 55	Increase or provide maneuvering or clear floor area	\$2,000.00
Hillview Community Center	Floor 1	Door/Gate	8 - 56	Replace or adjust door hardware	\$500.00
Hillview Community Center	Floor 1	Door/Gate	8 - 56	Provide or modify door kickplate	\$500.00
Hillview Community Center	Floor 1	Door/Gate	8 - 56	Adjust door closer	\$250.00
Hillview Community Center	Floor 1	Door/Gate	8 - 57	Replace or adjust door hardware	\$500.00
Hillview Community Center	Floor 1	Door/Gate	8 - 58	Replace or adjust door hardware	\$500.00
Hillview Community Center	Floor 1	Door/Gate	8 - 58	Provide or modify door kickplate	\$500.00
Hillview Community Center	Floor 1	Door/Gate	8 - 58	Adjust door closer	\$250.00
Exterior					
Hillview Community Center	Exterior	Walk	4 - 1	Regrade surface	\$500.00
Hillview Community Center	Exterior	Outdoor Constructed Features	33 - 1	Provide an accessible path of travel	\$5,000.00
Hillview Community Center	Exterior	Picnic Area	32 - 1	Provide an accessible table	\$2,500.00
Hillview Community Center	Exterior	Picnic Area	32 - 2	Provide an accessible table	\$2,500.00
Hillview Community Center	Exterior	Outdoor Constructed Features	33 - 2	Regrade surface	\$1,000.00
Hillview Community Center	Exterior	Curb Ramp	3 - 1	Provide detectable warning strip	\$1,000.00
Hillview Community Center	Exterior	Curb Ramp	3 - 1	Install, replace or modify curb ramp	\$3,500.00
Hillview Community Center	Exterior	Drinking Fountain	10 - 1	Adjust water stream	\$100.00
Hillview Community Center	Exterior	Drinking Fountain	10 - 1	Replace or reposition drinking fountain	\$5,000.00
Hillview Community Center	Exterior	Hazard	7 - 1	Remove overhanging or protruding objects	\$1,000.00
Concession / Restroom					
Hillview Park	Exterior	Multiple User Restroom	19 - 1	Install sign	\$500.00
Hillview Park	Exterior	Multiple User Restroom	19 - 1	Modify lavatory/counter clearances	\$2,500.00
Hillview Park	Exterior	Multiple User Restroom	19 - 1	Replace or reposition dispensers or mirrors	\$150.00
Hillview Park	Exterior	Multiple User Restroom	19 - 1	Provide or replace stall door hardware	\$250.00
Hillview Park	Exterior	Multiple User Restroom	19 - 1	Replace or reposition fixtures	\$1,500.00
Hillview Park	Exterior	Multiple User Restroom	19 - 1	Replace or modify grab bars	\$1,000.00
Hillview Park	Exterior	Multiple User Restroom	19 - 1	Modify stall partitions and doors	\$1,500.00
Hillview Park	Exterior	Multiple User Restroom	19 - 2	Install sign	\$500.00
Hillview Park	Exterior	Multiple User Restroom	19 - 2	Modify lavatory/counter clearances	\$2,500.00
Hillview Park	Exterior	Multiple User Restroom	19 - 2	Replace or reposition dispensers or mirrors	\$450.00
Hillview Park	Exterior	Multiple User Restroom	19 - 2	Provide or replace stall door hardware	\$250.00
Hillview Park	Exterior	Multiple User Restroom	19 - 2	Replace or modify grab bars	\$1,000.00
Hillview Park	Exterior	Multiple User Restroom	19 - 2	Reposition toilet flush controls	\$1,000.00
Hillview Park	Exterior	Multiple User Restroom	19 - 2	Replace or reposition urinal	\$3,000.00
Hillview Park	Exterior	Multiple User Restroom	19 - 2	Modify stall partitions and doors	\$1,500.00

Appendix F PH2.2, April 2014

History House					
History House	Exterior	Building Level / Lift	12 - 1	Modify or replace wheelchair lift	\$500.00
History House	Exterior	Sign	9 - 1	Provide sign(s) indicating accessible entries and facilities	\$1,000.00
History Museum	Basement	Built-in Elements	16 - 1	Provide an accessible counter	\$5,000.00
History Museum	Exterior	Multiple User Restroom	19 - 1	Insulate water lines	\$250.00
History Museum	Exterior	Multiple User Restroom	19 - 1	Replace or reposition dispensers or mirrors	\$600.00
History Museum	Exterior	Multiple User Restroom	19 - 1	Provide or replace stall door hardware	\$250.00
History Museum	Exterior	Multiple User Restroom	19 - 1	Replace or modify grab bars	\$1,000.00
History Museum	Exterior	Multiple User Restroom	19 - 1	Reposition toilet flush controls	\$1,000.00
History Museum	Exterior	Multiple User Restroom	19 - 1	Replace or reposition fixtures	\$1,500.00
History Museum	Exterior	Multiple User Restroom	19 - 1	Install sign	\$500.00
History Museum	Exterior	Multiple User Restroom	19 - 2	Replace or reposition urinal	\$3,000.00
History Museum	Exterior	Multiple User Restroom	19 - 2	Replace or reposition dispensers or mirrors	\$600.00
History Museum	Exterior	Multiple User Restroom	19 - 2	Provide or replace stall door hardware	\$250.00
History Museum	Exterior	Multiple User Restroom	19 - 2	Replace or reposition fixtures	\$1,500.00
History Museum	Exterior	Multiple User Restroom	19 - 2	Replace or modify grab bars	\$1,000.00
History Museum	Exterior	Multiple User Restroom	19 - 2	Modify stall partitions and doors	\$1,500.00
History Museum	Exterior	Multiple User Restroom	19 - 2	Install sign	\$500.00
History Museum	Exterior	Door/Gate	8 - 2	Adjust door closer	\$250.00
History Museum	Exterior	Door/Gate	8 - 1	Adjust door closer	\$250.00
History Museum	Exterior	Door/Gate	8 - 1	Provide additional strike edge clearance	\$0.00
History Museum	Floor 1	Door/Gate	8 - 3	Adjust door closer	\$250.00
History Museum	Floor 1	Door/Gate	8 - 3	Install or modify permanent room signs	\$250.00
History Museum	Floor 1	Door/Gate	8 - 4	Adjust door closer	\$250.00
History Museum	Floor 1	Door/Gate	8 - 4	Install or modify permanent room signs	\$250.00
History Museum	Floor 1	Built-in Elements	16 - 2	Provide an accessible counter	\$5,000.00
History Museum	Floor 1	Elevator	13 - 1	Adjust or provide elevator signals and indicators	\$1,000.00
History Museum	Floor 1	Elevator	13 - 1	Adjust elevator controls and labeling	\$2,000.00
History Museum	Floor 1	Stairway	6 - 1	Install tread striping	\$50.00
History Museum	Floor 2	Door/Gate	8 - 1	Adjust door closer	\$250.00
Fire Station - Almond Ave					
Los Altos Fire Station	Exterior	Parking Area	1 - 1	Install sign	\$500.00
Los Altos Fire Station	Exterior	Parking Area	1 - 1	Install van parking sign	\$500.00
Los Altos Fire Station	Exterior	Parking Area	1 - 1	Provide or modify accessible access aisles	\$1,000.00
Los Altos Fire Station	Exterior	Stairway	6 - 1	Install tread striping	\$50.00
Los Altos Fire Station	Floor 1	Built-in Elements	16 - 1	Provide an accessible counter	\$5,000.00
Los Altos Fire Station	Floor 1	Door/Gate	8 - 1	Provide sign(s) indicating accessible entries and facilities	\$100.00
Loyola Fire Station					
Loyola Fire Station	Exterior	Parking Area	1 - 1	Provide or modify accessible spaces	\$500.00
Loyola Fire Station	Floor 1	Door/Gate	8 - 1	Provide sign(s) indicating accessible entries and facilities	\$1,000.00
Loyola Fire Station	Floor 1	Door/Gate	8 - 1	Adjust door closer	\$250.00
Loyola Fire Station	Floor 1	Door/Gate	8 - 1	Provide additional strike edge clearance	\$5,000.00
Main Library					
Main Library	Floor 1	Door/Gate	8 - 1	Provide sign(s) indicating accessible entries and facilities	\$1,000.00
Main Library	Floor 1	Door/Gate	8 - 2	Provide or modify door kickplate	\$500.00
Main Library	Floor 1	Door/Gate	8 - 3	Adjust door closer	\$250.00
Main Library	Floor 1	Multiple User Restroom	19 - 1	Modify lavatory/counter clearances	\$2,500.00
Main Library	Floor 1	Multiple User Restroom	19 - 1	Insulate water lines	\$250.00
Main Library	Floor 1	Multiple User Restroom	19 - 1	Replace or reposition dispensers or mirrors	\$150.00
Main Library	Floor 1	Multiple User Restroom	19 - 1	Provide or replace stall door hardware	\$250.00
Main Library	Floor 1	Multiple User Restroom	19 - 1	Reposition toilet flush controls	\$1,000.00
Main Library	Floor 1	Multiple User Restroom	19 - 1	Replace or reposition fixtures	\$1,500.00
Main Library	Floor 1	Built-in Elements	16 - 1	Provide an accessible counter	\$5,000.00
Main Library	Floor 1	Door/Gate	8 - 5	Provide or modify door kickplate	\$1,000.00
Main Library	Floor 1	Door/Gate	8 - 5	Install or modify permanent room signs	\$250.00
Main Library	Floor 1	Door/Gate	8 - 4	Adjust door closer	\$250.00
Main Library	Floor 1	Library	24 - 1	Widen aisles	\$1,000.00
Main Library	Floor 1	Door/Gate	8 - 6	Install or modify permanent room signs	\$250.00
Main Library	Floor 1	Door/Gate	8 - 7	Adjust door closer	\$250.00
Main Library	Floor 1	Door/Gate	8 - 8	Provide additional strike edge clearance	\$0.00
Main Library	Floor 1	Door/Gate	8 - 9	Adjust door closer	\$250.00
Main Library	Floor 1	Door/Gate	8 - 9	Provide additional strike edge clearance	\$5,000.00
Main Library	Floor 1	Door/Gate	8 - 9	Install or modify permanent room signs	\$250.00
Main Library	Floor 1	Door/Gate	8 - 10	Provide additional strike edge clearance	\$5,000.00
Main Library	Floor 1	Door/Gate	8 - 10	Install or modify permanent room signs	\$250.00
Main Library	Floor 1	Multiple User Restroom	19 - 2	Replace or reposition dispensers or mirrors	\$300.00
Main Library	Floor 1	Multiple User Restroom	19 - 2	Provide or replace stall door hardware	\$250.00
Main Library	Floor 1	Multiple User Restroom	19 - 2	Replace or modify grab bars	\$1,000.00
Main Library	Floor 1	Multiple User Restroom	19 - 2	Replace or reposition fixtures	\$1,500.00
Main Library	Floor 1	Multiple User Restroom	19 - 2	Reposition clothing hooks	\$100.00
Main Library	Floor 1	Door/Gate	8 - 11	Install or modify permanent room signs	\$250.00
Main Library	Floor 1	Door/Gate	8 - 12	Install or modify permanent room signs	\$250.00
Main Library	Floor 1	Kitchen	25 - 1	Modify lavatory/counter clearances	\$2,500.00
Main Library	Floor 1	Kitchen	25 - 1	Replace or reposition dispensers or mirrors	\$150.00
Main Library	Exterior	Outdoor Constructed Features	33 - 1	Provide accessible fixed bench	\$2,000.00

Appendix F PH2.2, April 2014

Main Library	Exterior	Telephone	11 - 1	Increase or provide maneuvering or clear floor area	\$2,000.00
Main Library	Exterior	Telephone	11 - 1	Provide new phone equipment	\$0.00
Marymeade Park					
Marymeade Park	Exterior	Door/Gate	8 - 2	Replace or modify door threshold	\$1,500.00
Marymeade Park	Exterior	Door/Gate	8 - 2	Provide or modify door kickplate	\$500.00
Marymeade Park	Exterior	Door/Gate	8 - 1	Replace or modify door threshold	\$1,500.00
Marymeade Park	Exterior	Door/Gate	8 - 1	Provide or modify door kickplate	\$500.00
Marymeade Park	Exterior	Multiple User Restroom	19 - 1	Replace or reposition dispensers or mirrors	\$300.00
Marymeade Park	Exterior	Multiple User Restroom	19 - 1	Modify lavatory/counter clearances	\$2,500.00
Marymeade Park	Exterior	Multiple User Restroom	19 - 1	Modify stall partitions and doors	\$1,500.00
Marymeade Park	Exterior	Multiple User Restroom	19 - 1	Replace toilet or adjust toilet seat height	\$1,000.00
Marymeade Park	Exterior	Multiple User Restroom	19 - 1	Replace or modify grab bars	\$1,000.00
Marymeade Park	Exterior	Multiple User Restroom	19 - 1	Provide or replace stall door hardware	\$250.00
Marymeade Park	Exterior	Multiple User Restroom	19 - 1	Increase or provide maneuvering or clear floor area	\$2,000.00
Marymeade Park	Exterior	Multiple User Restroom	19 - 1	Install sign	\$500.00
Marymeade Park	Exterior	Multiple User Restroom	19 - 2	Replace or reposition dispensers or mirrors	\$300.00
Marymeade Park	Exterior	Multiple User Restroom	19 - 2	Modify lavatory/counter clearances	\$2,500.00
Marymeade Park	Exterior	Multiple User Restroom	19 - 2	Modify stall partitions and doors	\$1,500.00
Marymeade Park	Exterior	Multiple User Restroom	19 - 2	Replace toilet or adjust toilet seat height	\$1,000.00
Marymeade Park	Exterior	Multiple User Restroom	19 - 2	Replace or modify grab bars	\$1,000.00
Marymeade Park	Exterior	Multiple User Restroom	19 - 2	Provide or replace stall door hardware	\$250.00
Marymeade Park	Exterior	Multiple User Restroom	19 - 2	Increase or provide maneuvering or clear floor area	\$2,000.00
Marymeade Park	Exterior	Multiple User Restroom	19 - 2	Install sign	\$500.00
Marymeade Park	Exterior	Drinking Fountain	10 - 1	Replace or reposition drinking fountain	\$5,000.00
McKenzie Park					
McKenzie Park	Exterior	Door/Gate	8 - 1	Provide or modify door kickplate	\$1,000.00
McKenzie Park	Exterior	Door/Gate	8 - 1	Replace or adjust door hardware	\$1,000.00
McKenzie Park	Exterior	Door/Gate	8 - 1	Increase or provide maneuvering or clear floor area	\$2,000.00
McKenzie Park	Exterior	Door/Gate	8 - 1	Replace or modify door threshold	\$1,500.00
McKenzie Park	Exterior	Door/Gate	8 - 2	Provide or modify door kickplate	\$1,000.00
McKenzie Park	Exterior	Door/Gate	8 - 2	Replace or adjust door hardware	\$1,000.00
McKenzie Park	Exterior	Door/Gate	8 - 2	Increase or provide maneuvering or clear floor area	\$2,000.00
McKenzie Park	Exterior	Door/Gate	8 - 2	Replace or modify door threshold	\$1,500.00
McKenzie Park	Exterior	Drinking Fountain	10 - 1	Replace or reposition drinking fountain	\$5,000.00
McKenzie Park	Exterior	Single User Restroom	20 - 1	Replace or reposition dispensers or mirrors	\$150.00
McKenzie Park	Exterior	Single User Restroom	20 - 2	Replace or reposition dispensers or mirrors	\$150.00
Police Station					
Police Station	Floor 1	Telephone	11 - 1	Reposition phone equipment	\$500.00
Police Station	Floor 1	Hazard	7 - 1	Remove overhanging or protruding objects	\$1,000.00
Police Station	Floor 1	Built-in Elements	16 - 1	Provide an accessible counter	\$0.00
Police Station	Floor 1	Door/Gate	8 - 1	Replace or adjust door hardware	\$500.00
Police Station	Floor 1	Door/Gate	8 - 1	Install or modify permanent room signs	\$250.00
Police Station	Floor 1	Door/Gate	8 - 2	Replace or adjust door hardware	\$500.00
Police Station	Floor 1	Door/Gate	8 - 2	Install or modify permanent room signs	\$250.00
Police Station	Floor 1	Door/Gate	8 - 3	Replace or adjust door hardware	\$500.00
Police Station	Floor 1	Door/Gate	8 - 3	Install or modify permanent room signs	\$250.00
Police Station	Floor 1	Door/Gate	8 - 4	Replace or adjust door hardware	\$500.00
Police Station	Floor 1	Door/Gate	8 - 5	Replace or adjust door hardware	\$500.00
Police Station	Floor 1	Door/Gate	8 - 5	Provide additional strike edge clearance	\$5,000.00
Police Station	Exterior	Ramp	5 - 2	Regrade or replace ramp	\$25,000.00
Police Station	Exterior	Stairway	6 - 2	Install tread striping	\$100.00
Police Station	Exterior	Stairway	6 - 2	Install or modify handrails	\$5,000.00
Police Station	Floor 1	Drinking Fountain	10 - 1	Replace or reposition drinking fountain	\$5,000.00
Police Station	Floor 1	Single User Restroom	20 - 1	Replace or modify grab bars	\$1,000.00
Police Station	Floor 1	Single User Restroom	20 - 1	Increase or provide maneuvering or clear floor area	\$2,000.00
Police Station	Floor 1	Single User Restroom	20 - 1	Replace toilet or adjust toilet seat height	\$1,000.00
Rosita Park					
Rosita Park	Exterior	Drinking Fountain	10 - 1	Adjust water stream	\$100.00
Rosita Park	Exterior	Built-in Elements	16 - 1	Provide an accessible counter	\$5,000.00
Rosita Park	Exterior	Outdoor Constructed Features	33 - 1	Increase or provide maneuvering or clear floor area	\$2,000.00
Rosita Park	Exterior	Outdoor Constructed Features	33 - 2	Increase or provide maneuvering or clear floor area	\$500.00
Rosita Park	Exterior	Outdoor Constructed Features	33 - 3	Increase or provide maneuvering or clear floor area	\$0.00

Appendix F PH2.2, April 2014

San Antonio Club					
San Antonio Club	Exterior	Ramp	5 - 1	Install or modify handrails	\$5,000.00
San Antonio Club	Exterior	Stairway	6 - 1	Install or modify handrails	\$5,000.00
San Antonio Club	Exterior	Stairway	6 - 1	Install tread striping	\$75.00
San Antonio Club	Exterior	Stairway	6 - 2	Install tread striping	\$100.00
San Antonio Club	Exterior	Stairway	6 - 2	Install or modify handrails	\$5,000.00
San Antonio Club	Exterior	Stairway	6 - 4	Install tread striping	\$200.00
San Antonio Club	Exterior	Stairway	6 - 4	Install or modify handrails	\$5,000.00
San Antonio Club	Floor 1	Stairway	6 - 3	Install or modify handrails	\$5,000.00
San Antonio Club	Floor 1	Door/Gate	8 - 1	Provide or modify door kickplate	\$100.00
San Antonio Club	Floor 1	Door/Gate	8 - 1	Replace or modify door threshold	\$1,500.00
San Antonio Club	Floor 1	Door/Gate	8 - 1	Adjust door closer	\$250.00
San Antonio Club	Floor 1	Door/Gate	8 - 2	Enlarge door opening	\$5,000.00
San Antonio Club	Floor 1	Door/Gate	8 - 2	Adjust door closer	\$250.00
San Antonio Club	Floor 1	Door/Gate	8 - 3	Increase or provide maneuvering or clear floor area	\$2,000.00
San Antonio Club	Floor 1	Door/Gate	8 - 4	Enlarge door opening	\$5,000.00
San Antonio Club	Floor 1	Door/Gate	8 - 4	Adjust door closer	\$250.00
San Antonio Club	Floor 1	Door/Gate	8 - 5	Replace or adjust door hardware	\$1,000.00
San Antonio Club	Floor 1	Drinking Fountain	10 - 1	Increase or provide maneuvering or clear floor area	\$2,000.00
San Antonio Club	Floor 1	Single User Restroom	20 - 1	Replace or modify grab bars	\$1,000.00
San Antonio Club	Floor 1	Single User Restroom	20 - 1	Replace or reposition fixtures	\$1,500.00
San Antonio Club	Floor 1	Single User Restroom	20 - 1	Replace or reposition dispensers or mirrors	\$150.00
San Antonio Club	Floor 1	Kitchen	25 - 1	Increase or provide maneuvering or clear floor area	\$2,000.00
San Antonio Club	Floor 1	Kitchen	25 - 1	Replace or reposition dispensers or mirrors	\$150.00
San Antonio Club	Floor 1	Kitchen	25 - 1	Provide an accessible counter	\$5,000.00
San Antonio Club	Floor 1	Kitchen	25 - 1	Modify lavatory/counter clearances	\$2,500.00
San Antonio Club	Floor 1	Single User Restroom	20 - 2	Provide an accessible path of travel	\$0.00
Shoup Park					
Shoup Park	Exterior	Drinking Fountain	10 - 1	Replace or reposition drinking fountain	\$5,000.00
Shoup Park	Exterior	Multiple User Restroom	19 - 1	Replace or adjust water controls	\$500.00
Shoup Park	Exterior	Multiple User Restroom	19 - 1	Replace or reposition dispensers or mirrors	\$150.00
Shoup Park	Exterior	Multiple User Restroom	19 - 1	Provide or replace stall door hardware	\$250.00
Shoup Park	Exterior	Multiple User Restroom	19 - 1	Modify lavatory/counter clearances	\$2,500.00
Shoup Park	Exterior	Multiple User Restroom	19 - 2	Replace or adjust water controls	\$500.00
Shoup Park	Exterior	Multiple User Restroom	19 - 2	Replace or reposition dispensers or mirrors	\$150.00
Shoup Park	Exterior	Multiple User Restroom	19 - 2	Provide or replace stall door hardware	\$250.00
Shoup Park	Exterior	Multiple User Restroom	19 - 2	Modify lavatory/counter clearances	\$2,500.00
Underground Teen Center					
Underground Teen Center	Exterior	Stairway	6 - 1	Install tread striping	\$150.00
Underground Teen Center	Exterior	Stairway	6 - 1	Install or modify handrails	\$5,000.00
Underground Teen Center	Exterior	Stairway	6 - 1	Replace stairs	\$25,000.00
Underground Teen Center	Basement	Door/Gate	8 - 1	Provide additional strike edge clearance	\$5,000.00
Underground Teen Center	Basement	Door/Gate	8 - 1	Increase or provide maneuvering or clear floor area	\$2,000.00
Underground Teen Center	Basement	Door/Gate	8 - 1	Replace or modify door threshold	\$1,500.00
Underground Teen Center	Basement	Door/Gate	8 - 1	Provide or modify door kickplate	\$500.00
Underground Teen Center	Basement	Door/Gate	8 - 1	Adjust door closer	\$250.00
Underground Teen Center	Basement	Door/Gate	8 - 1	Install or modify permanent room signs	\$250.00
Underground Teen Center	Basement	Built-in Elements	16 - 1	Provide an accessible counter	\$5,000.00
Underground Teen Center	Basement	Door/Gate	8 - 2	Enlarge door opening	\$5,000.00
Underground Teen Center	Basement	Multiple User Restroom	19 - 1	Provide an accessible path of travel	\$25,000.00
Underground Teen Center	Basement	Multiple User Restroom	19 - 2	Provide an accessible path of travel	\$25,000.00
Underground Teen Center	Basement	Corridor / Aisle	17 - 1	Widen corridor	\$10,000.00
Woodland Library					
Woodland Library	Floor 1	Door/Gate	8 - 1	Install or modify permanent room signs	\$250.00
Woodland Library	Floor 1	Door/Gate	8 - 2	Adjust door closer	\$250.00
Woodland Library	Floor 1	Door/Gate	8 - 2	Provide additional strike edge clearance	\$0.00
Woodland Library	Floor 1	Door/Gate	8 - 2	Install or modify permanent room signs	\$250.00
Woodland Library	Floor 1	Door/Gate	8 - 3	Adjust door closer	\$250.00
Woodland Library	Floor 1	Door/Gate	8 - 3	Increase or provide maneuvering or clear floor area	\$2,000.00
Woodland Library	Floor 1	Door/Gate	8 - 4	Adjust door closer	\$250.00
Woodland Library	Floor 1	Door/Gate	8 - 4	Increase or provide maneuvering or clear floor area	\$2,000.00
Woodland Library	Floor 1	Built-in Elements	16 - 1	Provide an accessible counter	\$5,000.00
Woodland Library	Floor 1	Multiple User Restroom	19 - 1	Replace or reposition dispensers or mirrors	\$450.00
Woodland Library	Floor 1	Multiple User Restroom	19 - 1	Widen corridor	\$10,000.00
Woodland Library	Floor 1	Multiple User Restroom	19 - 1	Modify stall partitions and doors	\$1,500.00
Woodland Library	Floor 1	Multiple User Restroom	19 - 1	Reposition controls and outlets	\$2,000.00
Woodland Library	Floor 1	Multiple User Restroom	19 - 1	Install visual fire alarms	\$1,500.00
Woodland Library	Floor 1	Multiple User Restroom	19 - 1	Install sign	\$500.00
Woodland Library	Floor 1	Multiple User Restroom	19 - 2	Reposition controls and outlets	\$2,000.00
Woodland Library	Floor 1	Multiple User Restroom	19 - 2	Replace or reposition dispensers or mirrors	\$450.00
Woodland Library	Floor 1	Multiple User Restroom	19 - 2	Modify lavatory/counter clearances	\$2,500.00
Woodland Library	Floor 1	Multiple User Restroom	19 - 2	Replace or reposition urinal	\$3,000.00
Woodland Library	Floor 1	Multiple User Restroom	19 - 2	Increase or provide maneuvering or clear floor area	\$2,000.00
Woodland Library	Floor 1	Multiple User Restroom	19 - 2	Install sign	\$500.00
Youth Center					
Youth Center	Floor 1	Door/Gate	8 - 1	Provide or modify door kickplate	\$500.00
Youth Center	Floor 1	Door/Gate	8 - 1	Install or modify permanent room signs	\$250.00
Youth Center	Floor 1	Door/Gate	8 - 2	Provide or modify door kickplate	\$500.00
Youth Center	Floor 1	Door/Gate	8 - 2	Install or modify permanent room signs	\$250.00

Appendix F PH2.2, April 2014

Youth Center	Floor 1	Kitchen	25 - 1	Modify lavatory/counter clearances	\$2,500.00
Youth Center	Floor 1	Kitchen	25 - 1	Replace or reposition dispensers or mirrors	\$150.00
Youth Center	Floor 1	Drinking Fountain	10 - 1	Replace or reposition drinking fountain	\$5,000.00
Youth Center	Floor 1	Single User Restroom	20 - 1	Modify lavatory/counter clearances	\$2,500.00
Youth Center	Floor 1	Single User Restroom	20 - 1	Replace or reposition dispensers or mirrors	\$150.00
Youth Center	Floor 1	Single User Restroom	20 - 1	Modify stall partitions and doors	\$1,500.00
Youth Center	Floor 1	Single User Restroom	20 - 1	Install sign	\$500.00
Youth Center	Floor 1	Multiple User Restroom	19 - 1	Install sign	\$500.00
Youth Center	Floor 1	Multiple User Restroom	19 - 2	Install sign	\$500.00
Youth Center	Floor 1	Built-in Elements	16 - 1	Provide an accessible counter	\$5,000.00
Youth Center	Floor 1	Built-in Elements	16 - 2	Provide an accessible counter	\$5,000.00
Youth Center	Floor 1	Door/Gate	8 - 3	Increase or provide maneuvering or clear floor area	\$2,000.00
Youth Center	Floor 1	Door/Gate	8 - 3	Replace or adjust door hardware	\$1,000.00
Youth Center	Exterior	Stairway	6 - 1	Install tread striping	\$500.00
Youth Center	Exterior	Stairway	6 - 1	Install or modify handrails	\$5,000.00
Youth Center	Exterior	Stairway	6 - 2	Install tread striping	\$500.00
Youth Center	Exterior	Stairway	6 - 2	Install or modify handrails	\$5,000.00
Youth Center	Exterior	Stairway	6 - 3	Install tread striping	\$500.00
Youth Center	Exterior	Stairway	6 - 3	Install or modify handrails	\$5,000.00
Youth Center	Floor 1	Door/Gate	8 - 4	Provide or modify door kickplate	\$500.00
Youth Center	Floor 1	Door/Gate	8 - 4	Install or modify permanent room signs	\$250.00
Youth Center	Floor 1	Door/Gate	8 - 5	Provide or modify door kickplate	\$500.00
Youth Center	Floor 1	Door/Gate	8 - 5	Install or modify permanent room signs	\$250.00
Youth Center	Floor 1	Door/Gate	8 - 6	Provide or modify door kickplate	\$500.00
Youth Center	Floor 1	Door/Gate	8 - 6	Install or modify permanent room signs	\$250.00
Youth Center	Floor 1	Door/Gate	8 - 7	Provide or modify door kickplate	\$500.00
Youth Center	Floor 1	Door/Gate	8 - 7	Install or modify permanent room signs	\$250.00