

An aerial photograph of a residential neighborhood in Los Altos, California. A large rectangular area in the center-right of the image is highlighted in yellow, indicating the location of the Los Altos Hill View Community Center. The surrounding area consists of houses, streets, and green spaces.

LOS ALTOS HILL VIEW COMMUNITY CENTER
LOS ALTOS, CA

NOLL & TAM ARCHITECTS
JANET TAM
PRINCIPAL IN CHARGE

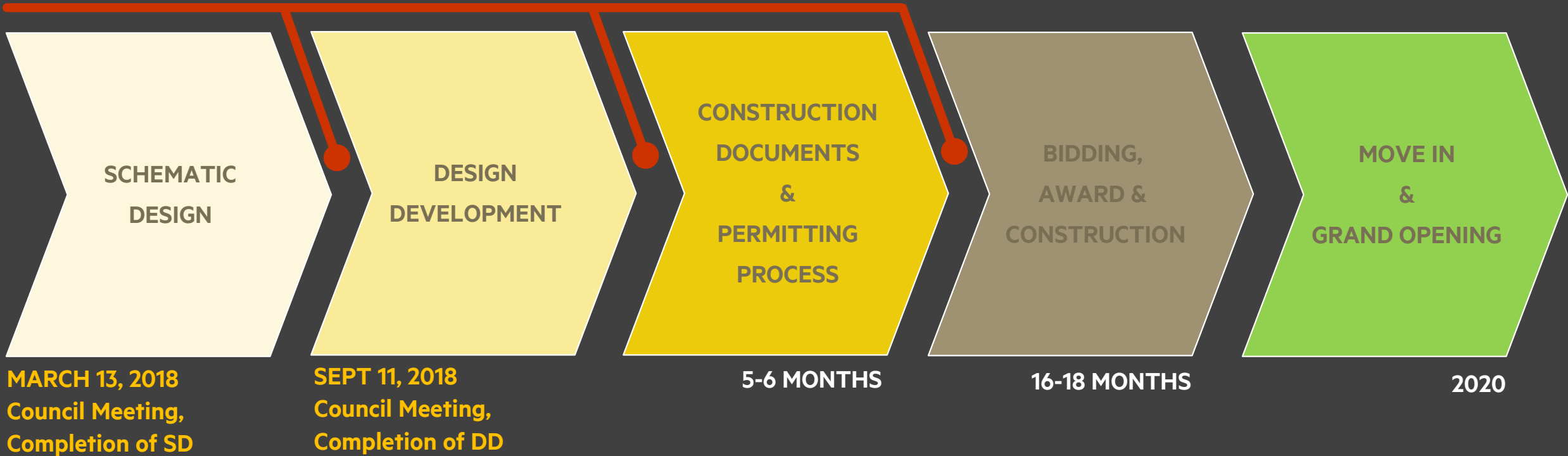
JAMES GWISE
PROJECT MANAGER

TRINA GOODWIN
INTERIOR ARCHITECT

PUBLIC ARTS COMMISSION MEETING
JULY 26th, 2018

PROJECT TIMELINE

CITY REVIEW & COST ESTIMATING MILESTONES



LOS ALTOS COMMUNITY CENTER- DESIGN & CONSTRUCTION SCHEDULE

NEW
HILLVIEW
COMMUNITY
CENTER

LITTLE LEAGUE
BALLFIELD

HISTORY
MUSEUM



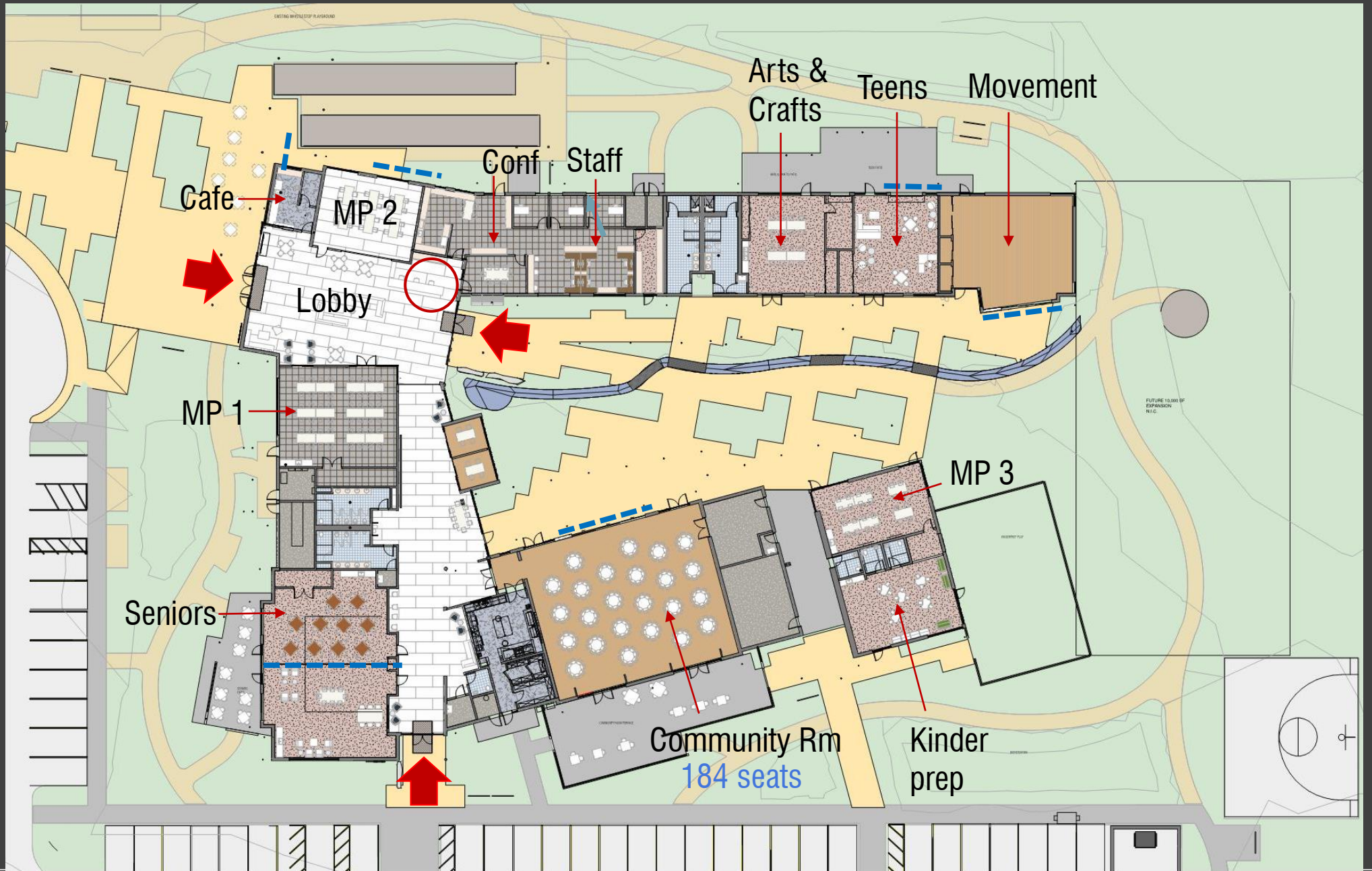
NEW NATURE
PLAY AREA

HILLVIEW
AVE

SOCCER
FIELD

AERIAL VIEW FROM ABOVE @ LIBRARY

24,500 sf



DESIGN DEVELOPMENT FLOOR PLAN

EXTERIOR MATERIAL PALETTE

- NATURAL WOOD
 - CEMENT FIBER PANEL
 - CEMENT PLASTER (STUCCO)
 - STONE ACCENTS
-

Precedents and Context

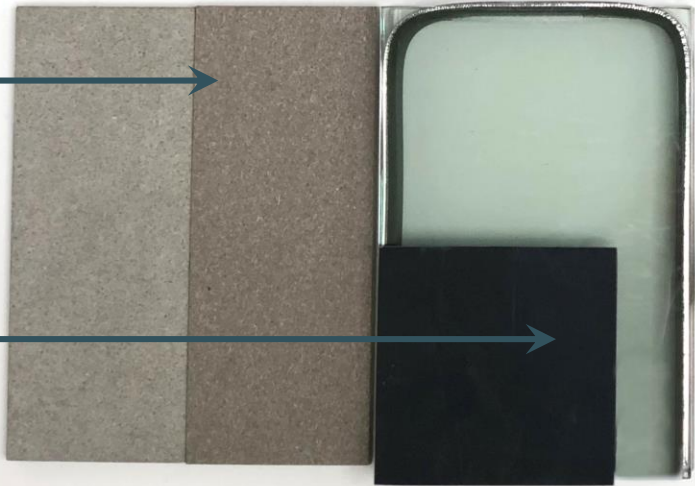


METAL ROOFING



NATURAL WOOD ACCENT WALLS

FIBER CEMENT PANELS

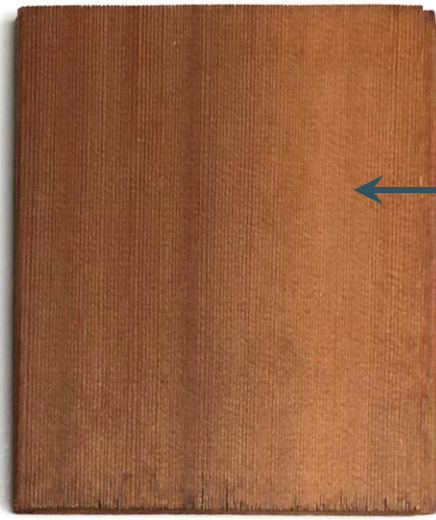


WINDOW GLAZING W/ ALUMINUM FRAMES

STUCCO



NATURAL WOOD SOFFITS AND TRELLIS



SCORED CONCRETE PLAZA PAVING

BOCCI COURT



COURTYARD RIVER ROCK

DG WALKING PATH



NATURAL STONE SITE WALLS



MAIN ENTRY & CAFE



AERIAL VIEW FROM HILLVIEW



SOUTH ENTRY

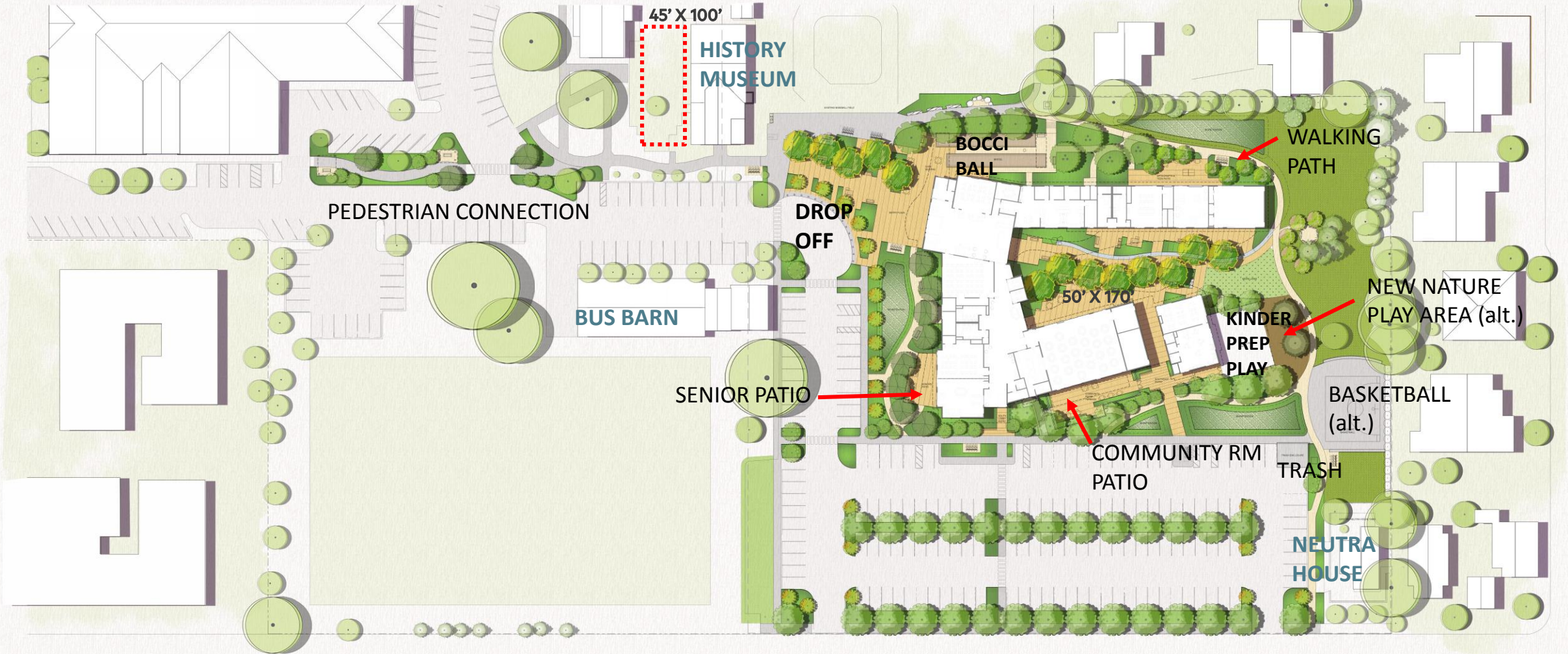


COURTYARD FROM MAIN LOBBY

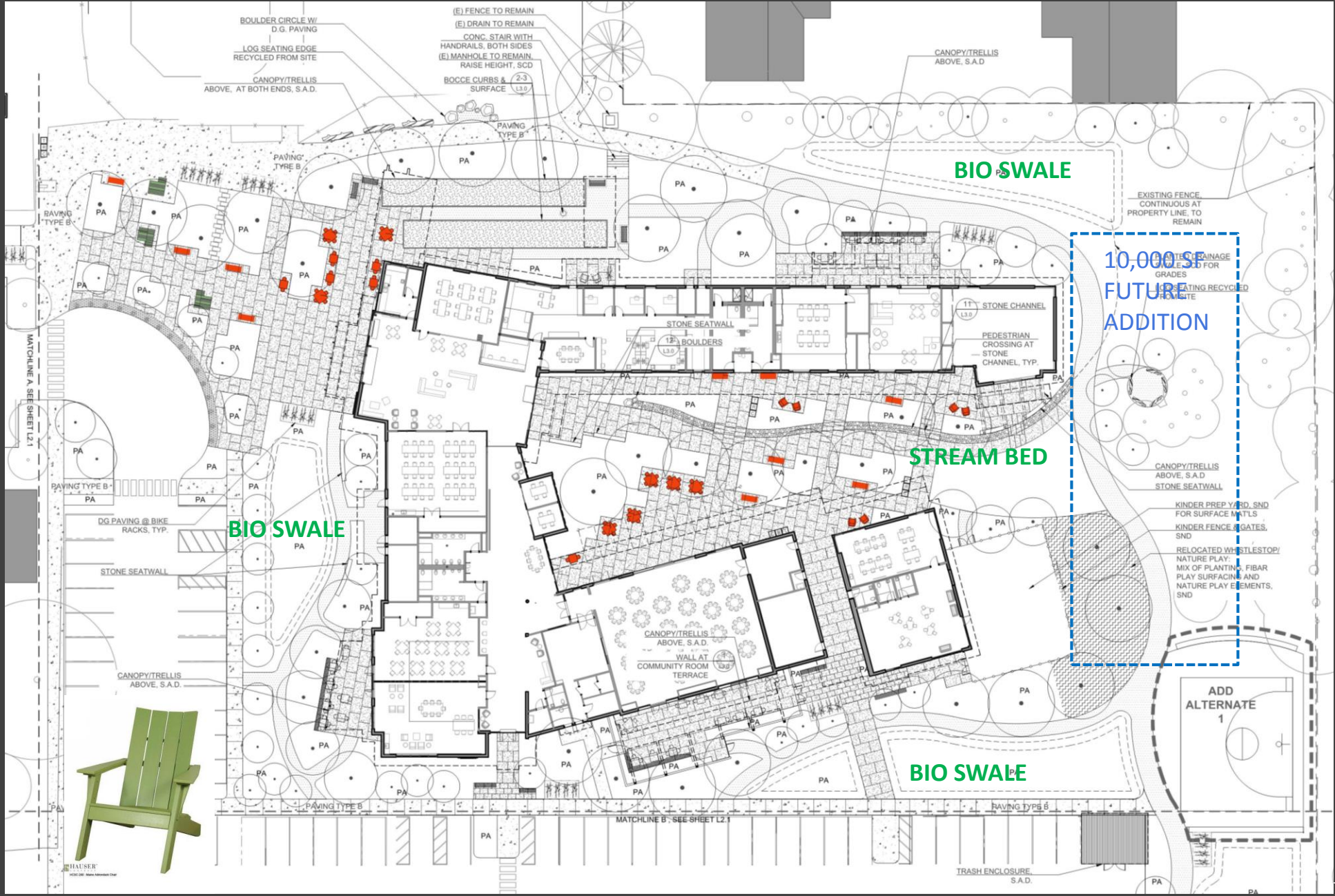


COURTYARD VIEWED FROM EAST

DESIGN DEVELOPMENT SITE & LANDSCAPE PLAN



COLOR POP LOCATIONS



SIGNATURE COLOR POP IDEAS



SIGNATURE COLOR POP IDEAS



#4 |

BOCCEBALL COURT *See samples*

LYNGSØ



OYSTER SHELL BOCCÉ BLEND



OYSTER SHELL FLOUR



BOCCEMON HOME SHOP ABOUT FAQ RESOURCES [REQUEST A QUOTE](#)

HOME | BOCCEMON "RAIN COUNTRY" BLEND

Boccemon "Rain Country" Blend

We ship our Rain Country Blend (RCB) worldwide. Clients build the perimeter and base and use Rain Country Blend to top dress the surface.

Please fill out a request a quote form if you are interested in our product for your bocce court.

RCB is produced in "micro" batches to ensure the consistency of the end product. Its composition is primarily finely rendered shell (oyster flour) that has been blended with other natural materials for increased binding and drainage. The advantage of RCB to most court owners is that it provides a premium playing surface with minimal maintenance compared with other natural materials.



#5 | DECOMPOSED GRANITE *See samples*



California Gold, buff

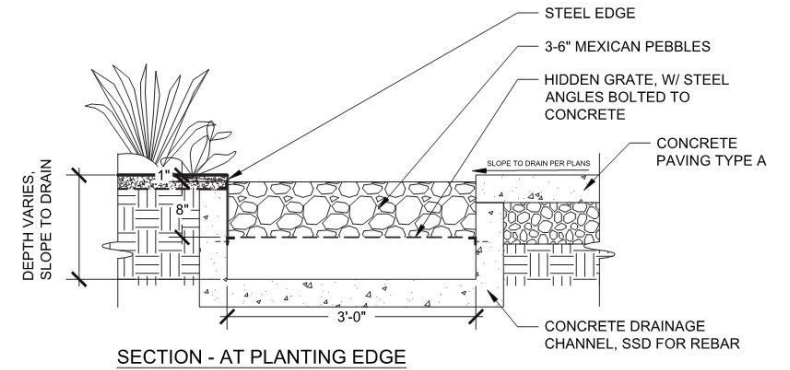


GraniteCrete

#6 |

STREAM BED

STONE CHANNEL
See samples, available in different sizes
Preferred option 3-6" Mexican Pebbles, black



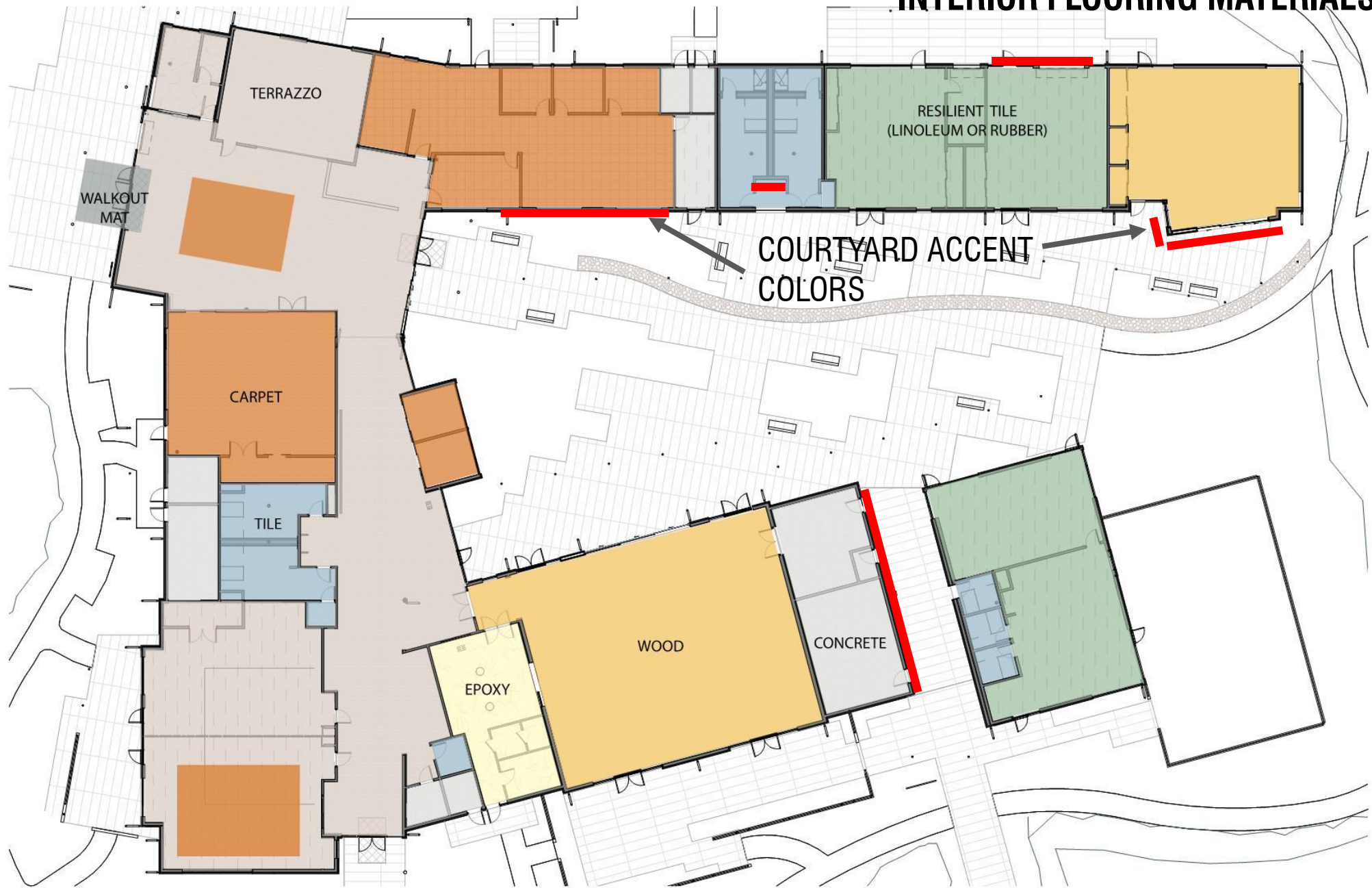
Acapulco Rock: Mexican Pebble Black



Acapulco Rock: Mexican Pebble Buff

INTERIOR CHARACTER & MATERIALS

INTERIOR FLOORING MATERIALS





MAIN LOBBY

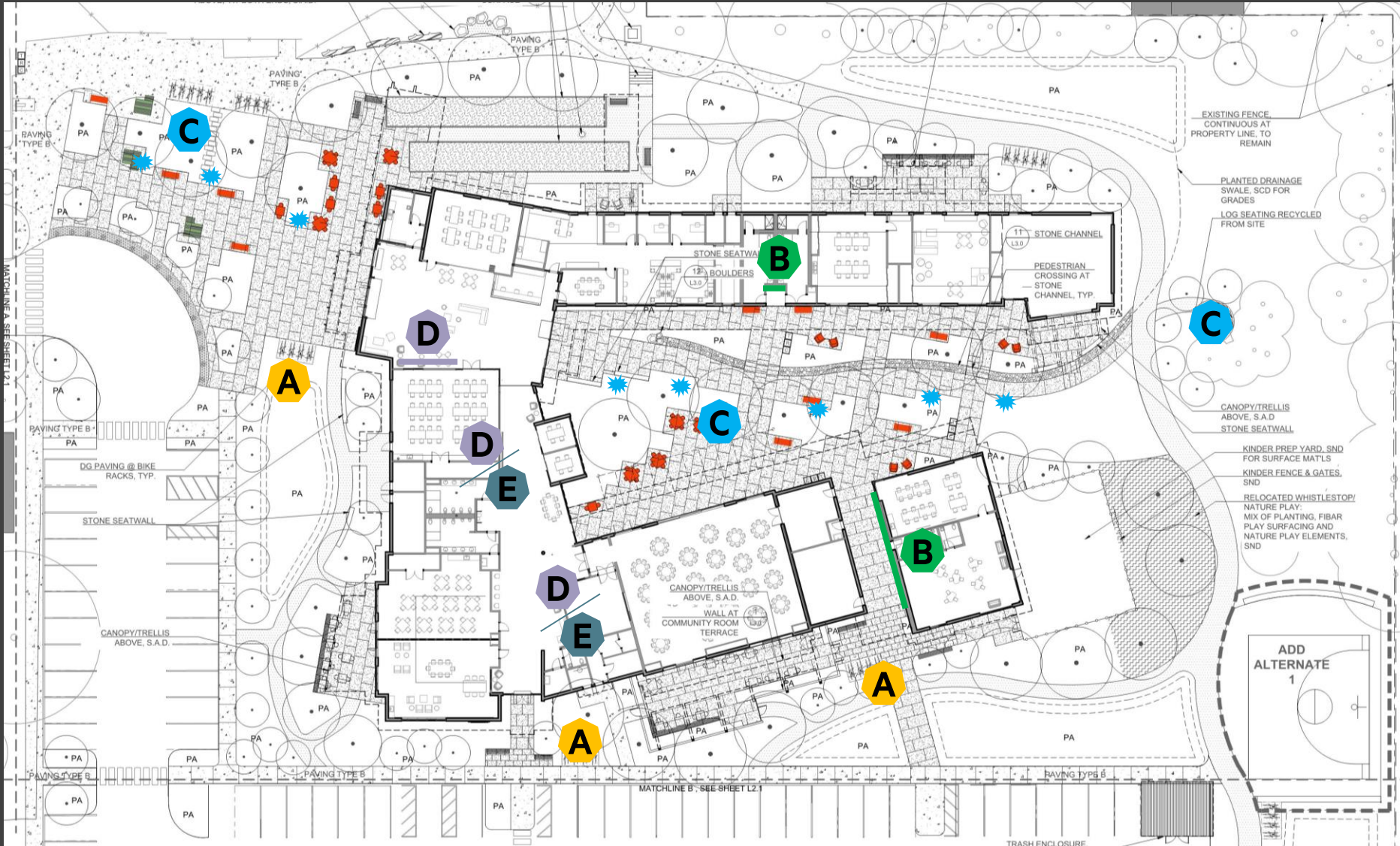


VIEW TO COURTYARD



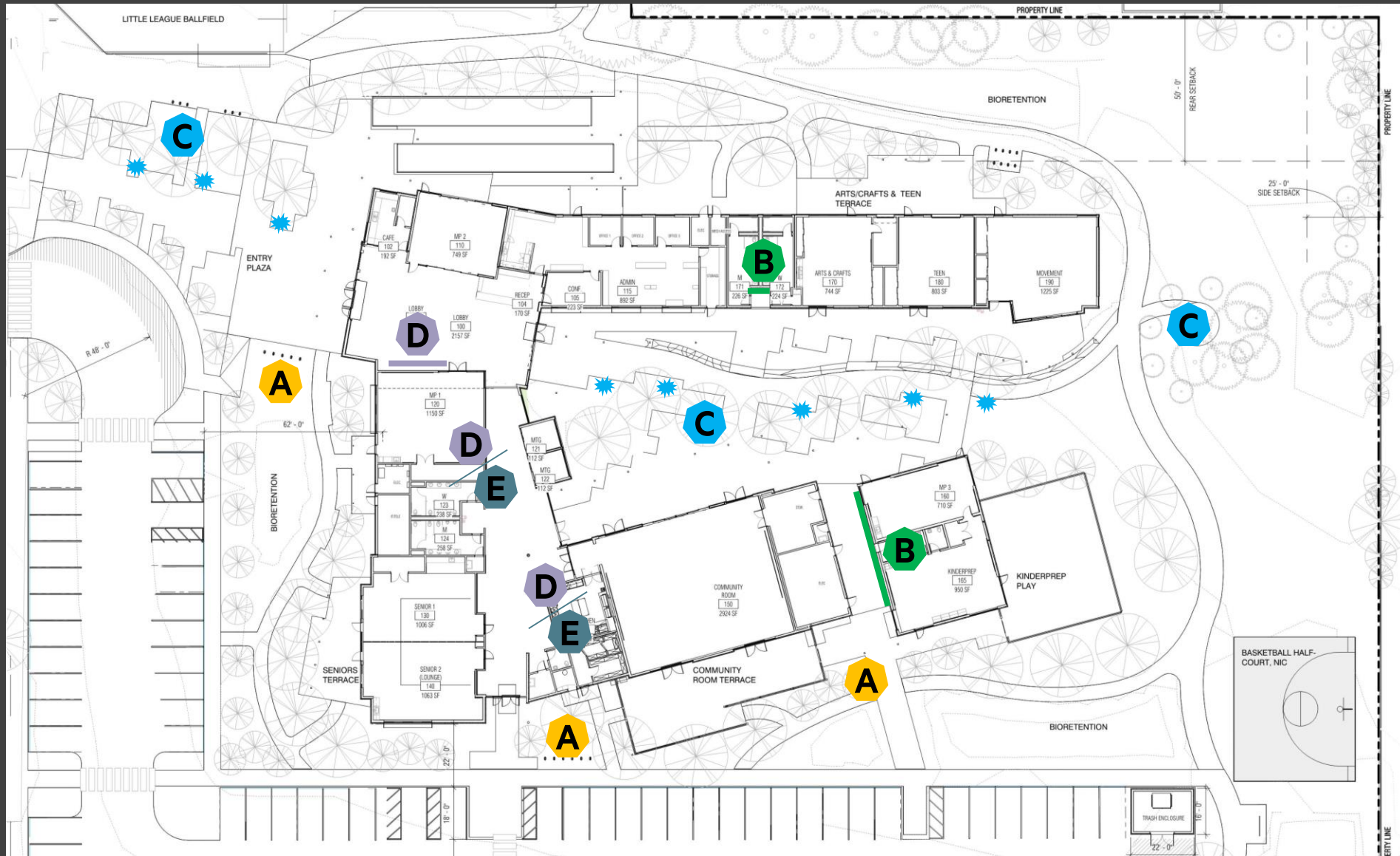
COMMUNITY ROOM TOWARD COURTYARD

POTENTIAL FUTURE ART LOCATIONS



- A** SITE FUNCTIONAL / “BIKE RACK ART”
- B** ACCENT WALL MURAL OPTIONS
- C** SCULPTURE / “3D ART” OPPORTUNITIES
- D** INTERIOR ART
- E** COMMUNITY ART DISPLAY AREA

POTENTIAL FUTURE ART LOCATIONS



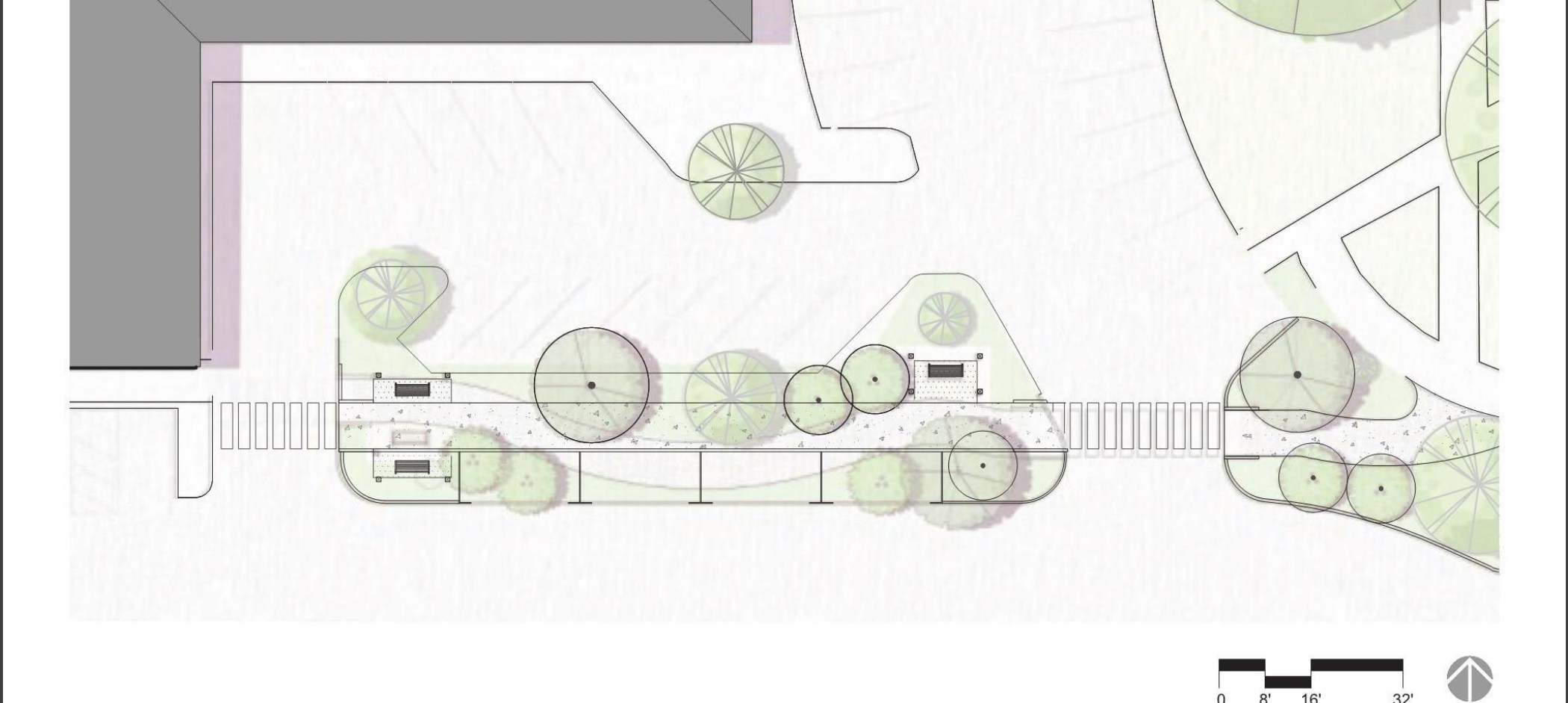
- A** SITE FUNCTIONAL / “BIKE RACK ART”
- B** ACCENT WALL MURAL OPTIONS
- C** SCULPTURE / “3D ART” OPPORTUNITIES
- D** INTERIOR ART
- E** COMMUNITY ART DISPLAY AREA



COMMUNITY ROOM TOWARD KITCHEN



SOUTH LOBBY



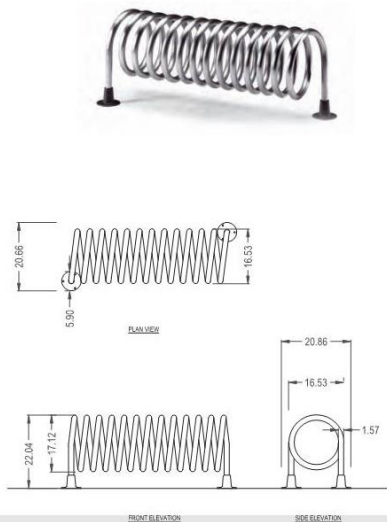
COMPLETE STREETS COMMENTS: PARKING AT LIBRARY

#4 BIKE RACKS

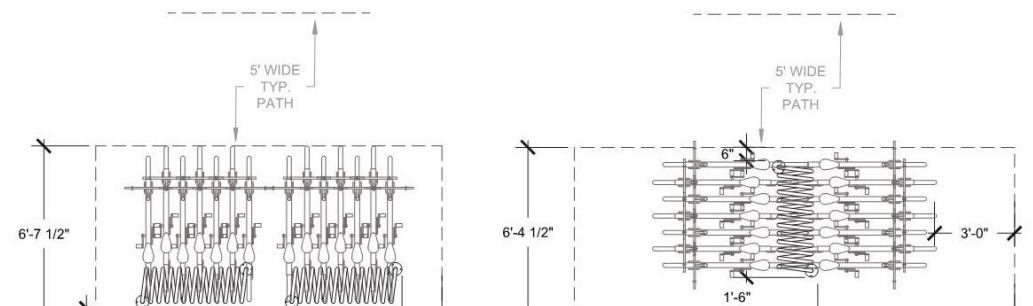
Maximize parking capacity | limit furnishing footing
| Relative Cost

RESET | idMetalco

- 6-7 single side bicycle capacity, 12-14 double side bicycle capacity
- Surface mount or in-ground
- Approximate unit price:
 - Powder coated steel, with powder coated aluminum supports, surface mount: \$925
 - Electropolished stainless steel, with powder coated aluminum supports, surface mount: \$2,031



3/8 Scale

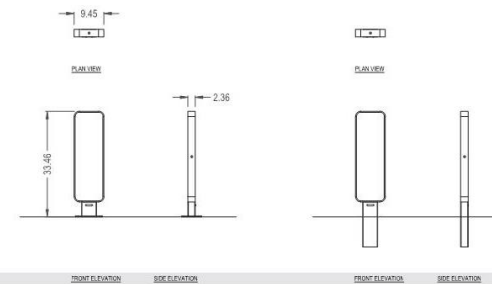


#4 BIKE RACKS

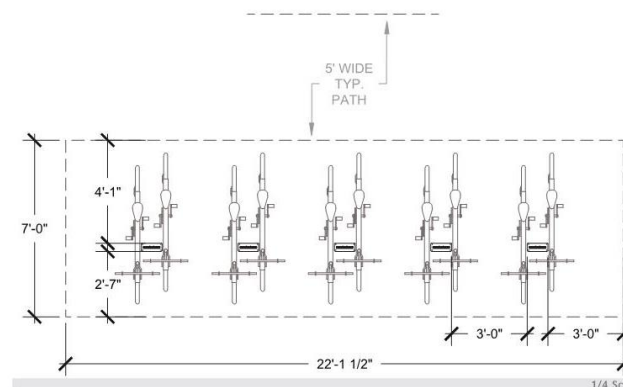
Maximize parking capacity | limit furnishing footing | Relative Cost

INSIDE | idMetalco

- 2 Bicycle capacity
- Surface mount or in-ground
- Approximate unit price: \$312



3/8 Scale

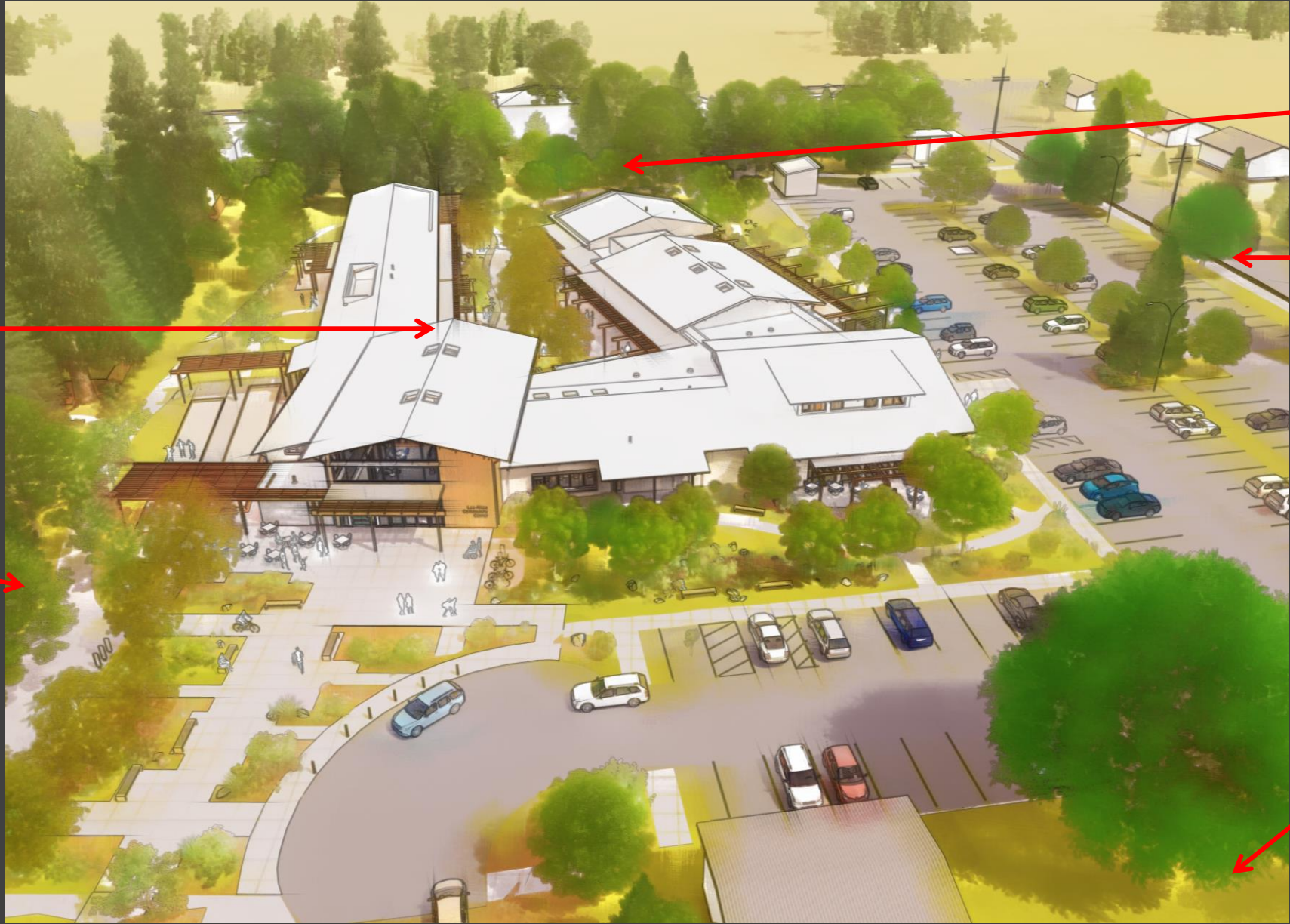


1/4 Scale

NEW
HILLVIEW
COMMUNITY
CENTER

LITTLE LEAGUE
BALLFIELD

HISTORY
MUSEUM



NEW NATURE
PLAY AREA

HILLVIEW
AVE

SOCCER
FIELD

AERIAL VIEW FROM ABOVE @ LIBRARY



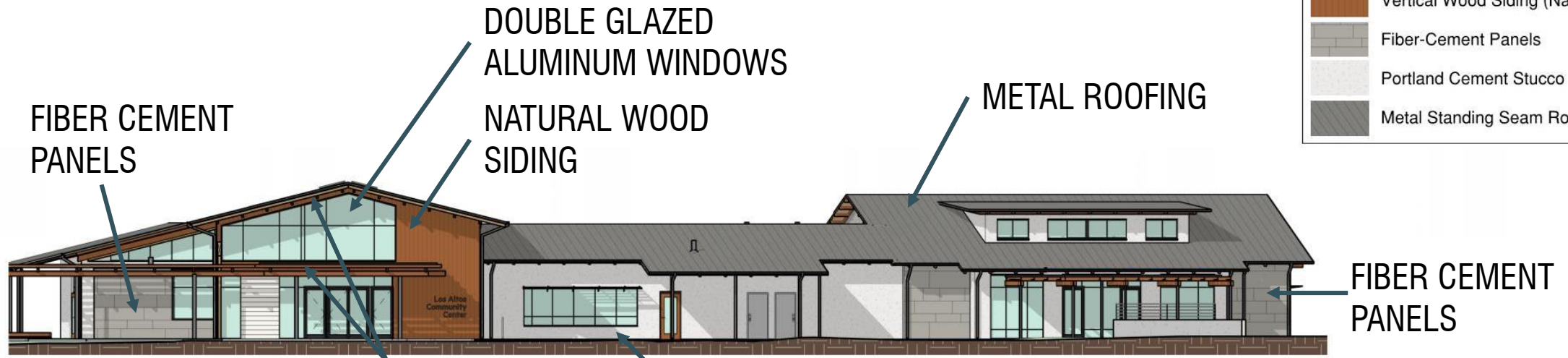
LT60



FIBER CEMENT WALL PANEL EXAMPLES

OPTION 1 MATERIALS

	Vertical Wood Siding (Natural)
	Fiber-Cement Panels
	Portland Cement Stucco
	Metal Standing Seam Roof



4 WEST ELEVATION
D3.11 1/16" = 1'-0"

NATURAL WOOD
TRELLIS AND
ROOF SOFFITS

STUCCO



5 SOUTH ELEVATION
D3.11 1/16" = 1'-0"

Seniors & South entry

Kitchen

Community Room

Kinder Prep



MAIN ENTRY FROM LIBRARY CONNECTION



COURTYARD VIEW