



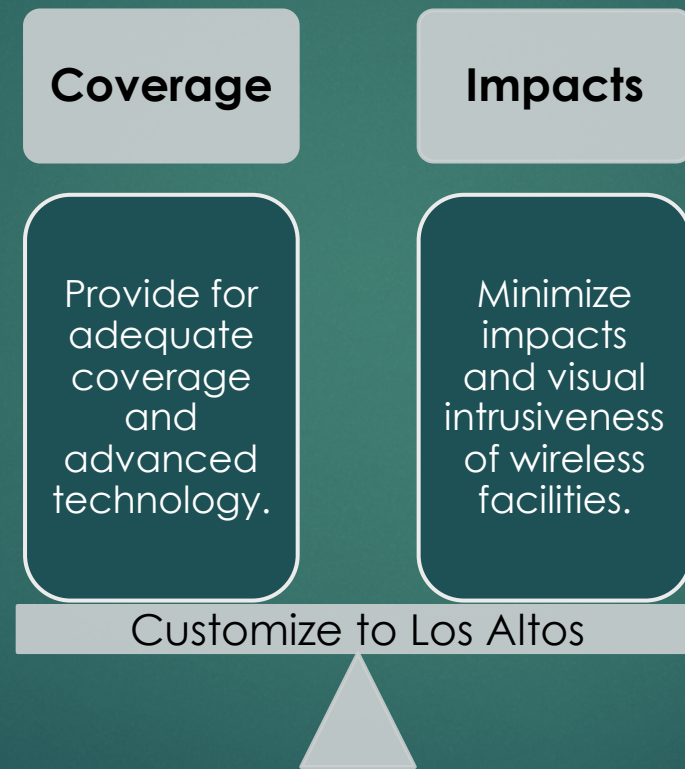
City of Los Altos

Wireless Telecommunications Facilities Ordinance and Design Guidelines

Planning Commission Public Hearing

MARCH 3, 2022

Purpose of Ordinance and Design Guidelines



City cannot regulate the placement, construction, or modification of wireless facilities that meet FCC regulations based on the environmental effects of radio frequency emissions. (Telecommunication Act of 1996 Section 704)

Wireless Telecommunications Facilities Technology Trends



Small Facilities

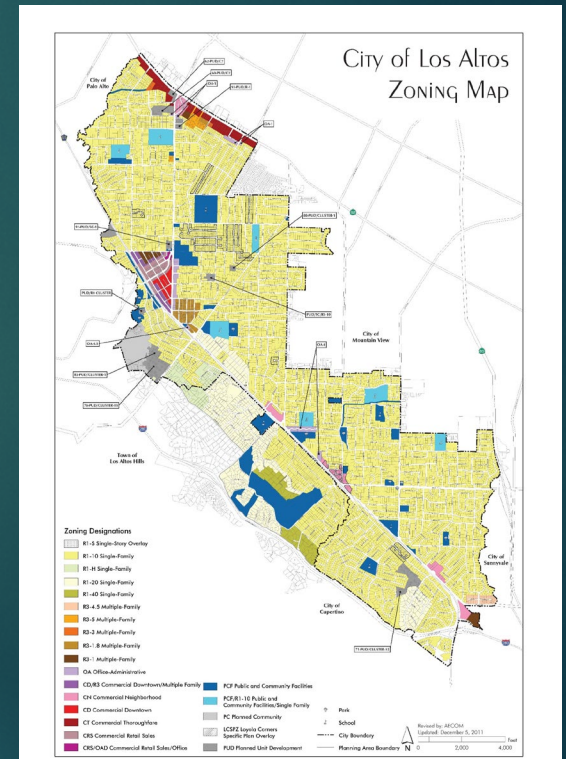
Less visually intrusive.
Less powerful antennas.
Repurpose existing frequencies.
Closer spacing and therefore more facilities.

Large visually intrusive towers.
Greater power allows for greater spacing and fewer facilities.

"Macro" Facilities



Locational Standards



Proposed Revisions

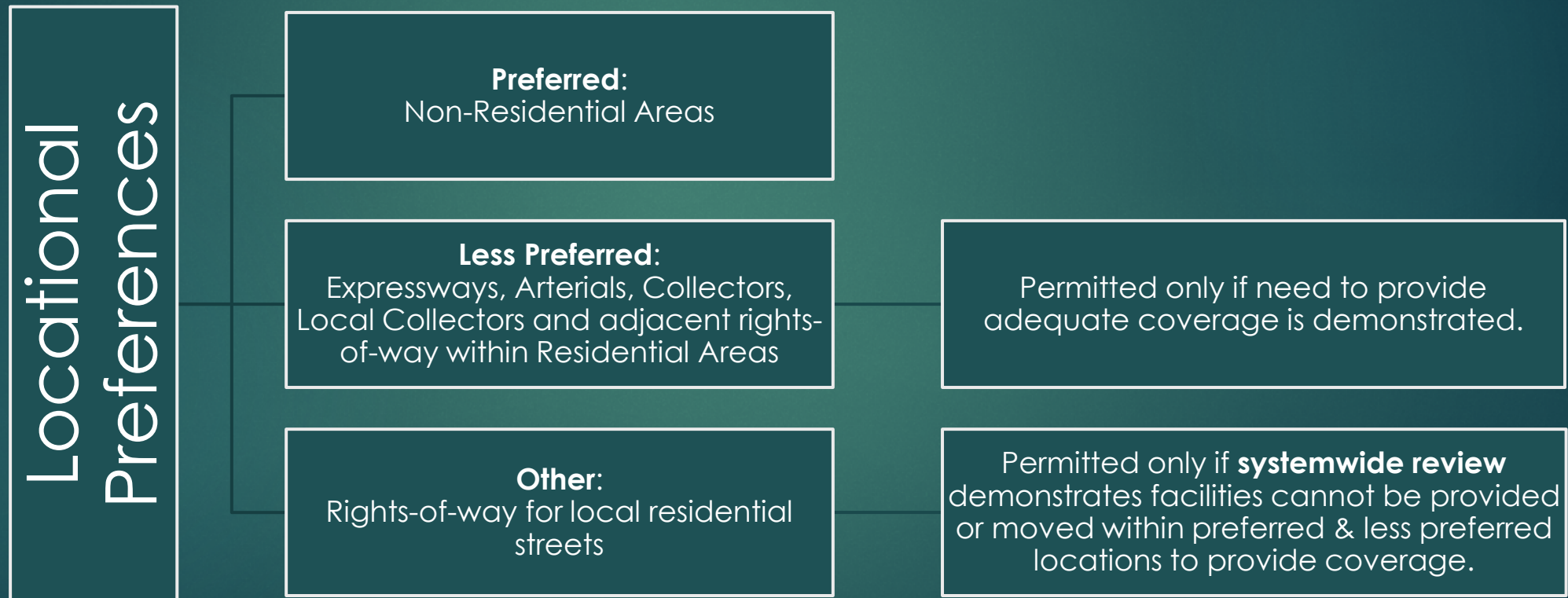
Existing Locational Standards

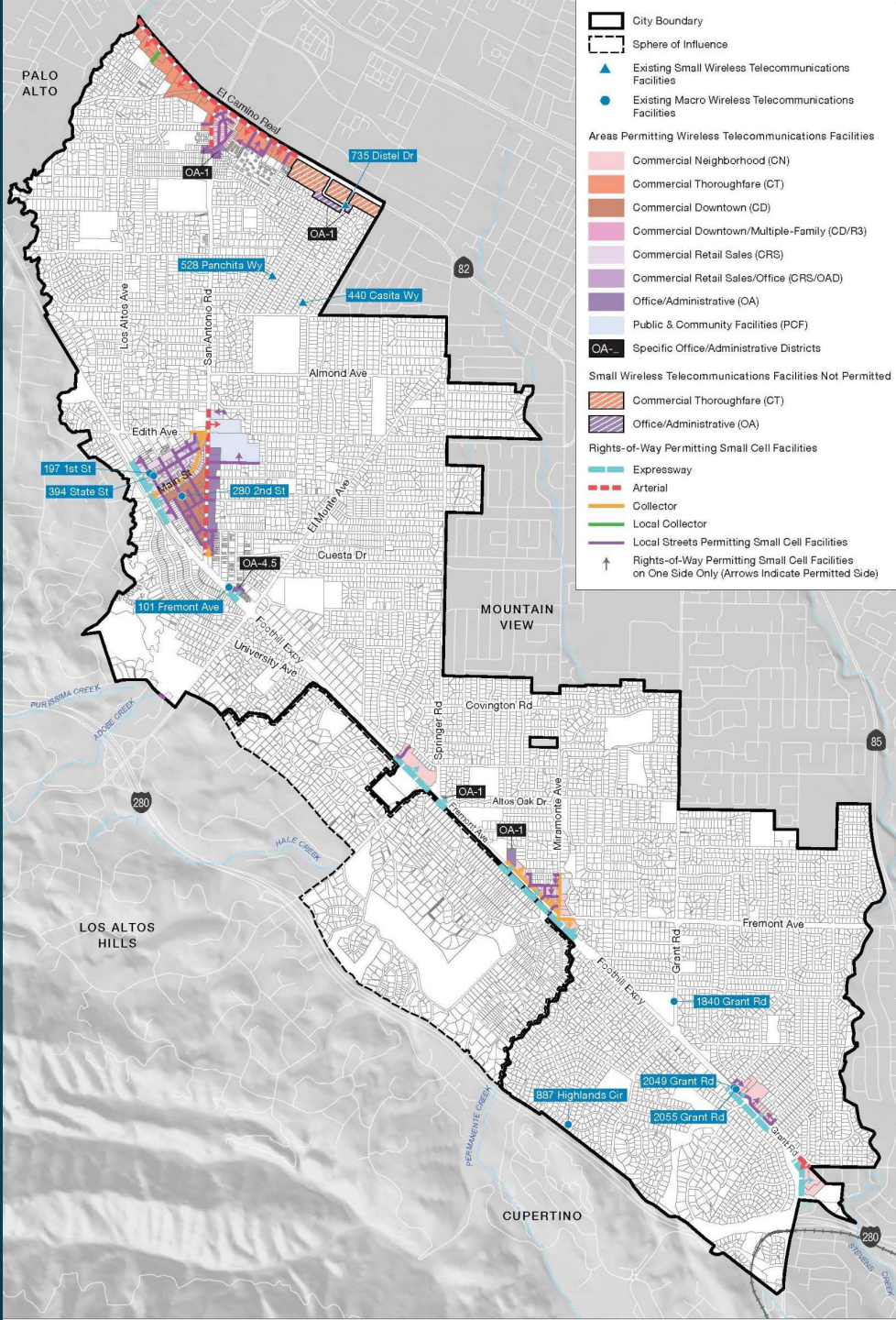
- ▶ Excludes Residential Zones (private properties and rights-of-way).
- ▶ 500-foot buffer from schools.
- ▶ 1,500-foot buffer between small facilities.

Proposed Locational Standards

- ▶ Excludes Residential Zones (private properties outside of rights-of-way only).
- ▶ Includes rights-of-way for:
 - ▶ Expressways, Arterials, Collectors, and Minor Collectors;
 - ▶ Local commercial streets;
 - ▶ Local residential streets within 200-500 feet of Expressways, Arterials, Collectors, and Minor Collectors; and
 - ▶ Potentially, other local residential streets based on a systemwide review of carriers' facilities.
- ▶ 1,000-foot buffer between small facilities.

Three-tiered Approach to Wireless Facilities Locations





Existing Permitted Locations

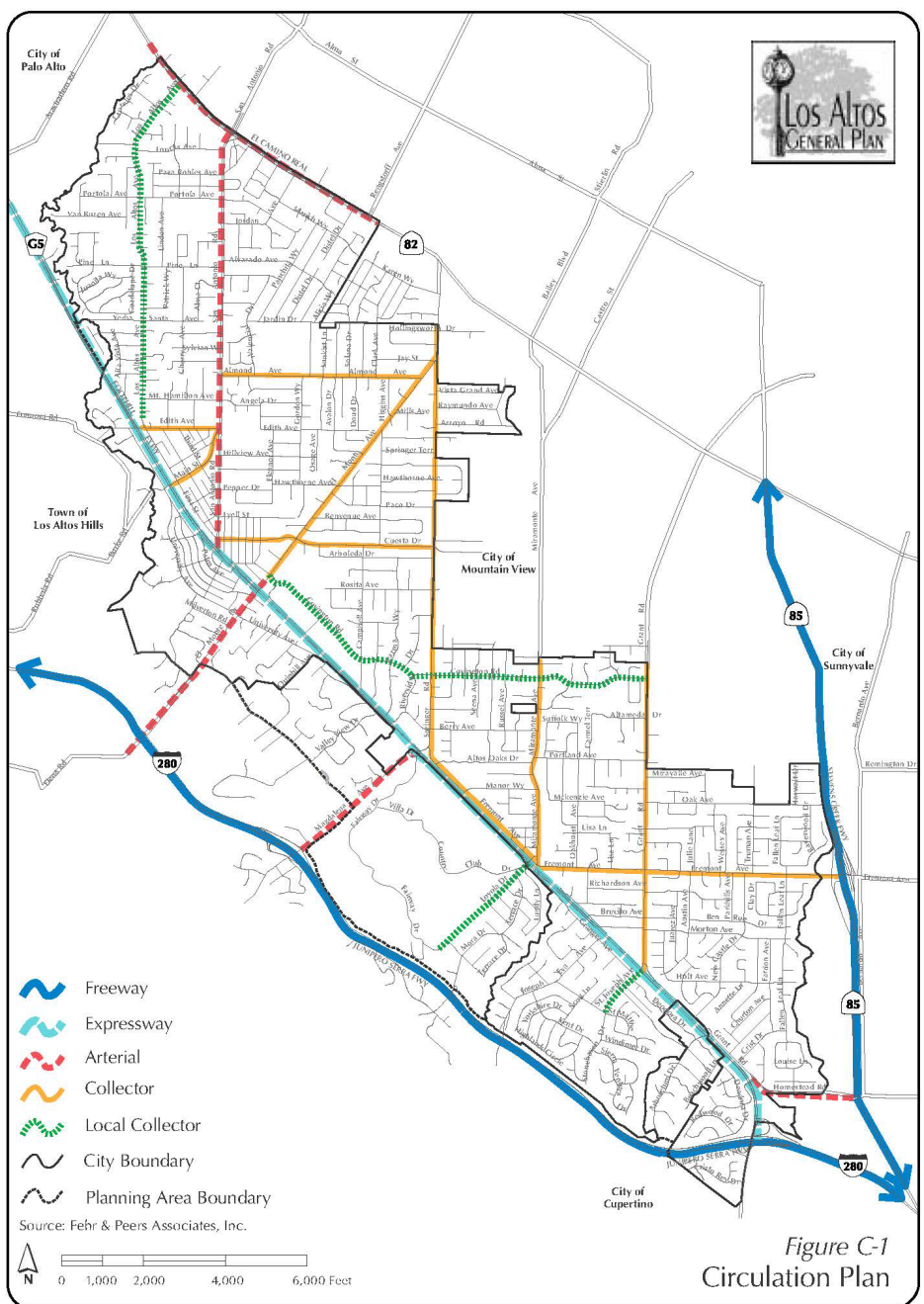
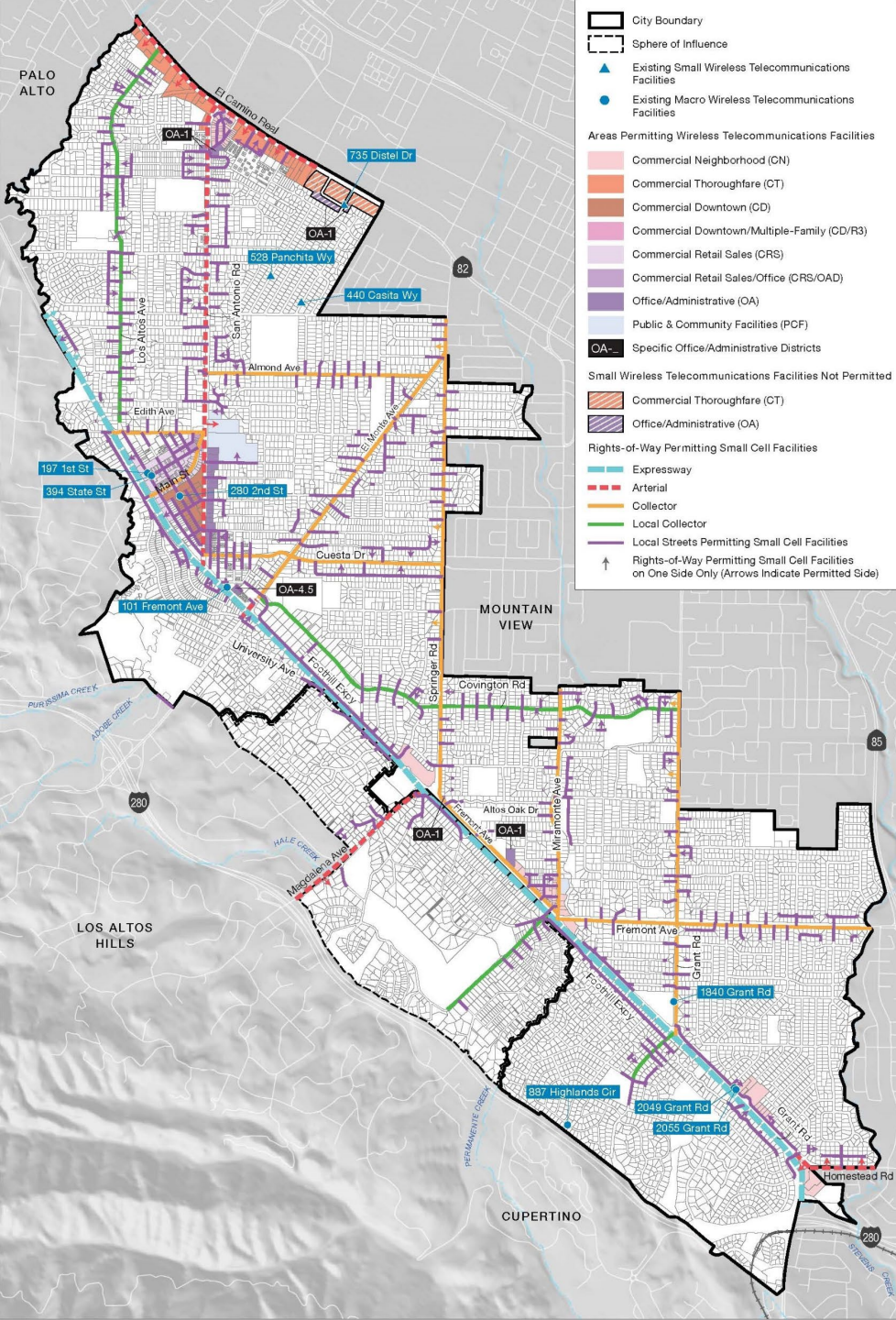


Figure C-1
Circulation Plan

Location of Expressways, Arterials, Collectors, and Local Collectors



Proposed Preferred and Less Preferred Locations

Design Guidelines



Proposed Revisions to Design Guidelines

Add explicit design principles for all wireless facilities.

Modify configuration preferences.

Supplement existing guidelines and add illustrations.

Proposed Design Principles for Wireless Facilities

Minimize Impacts

Visual

Noise

Other

Integration and Concealment

Facilities are to be visually integrated into their sites and as hidden from view as feasible.

Unconcealed design permitted only if a concealed facility is infeasible or would reduce the number and overall visual intrusiveness of facilities.

Context

What integrates well into one site and conceals a wireless telecommunications facility might not be appropriate for another situation.

Existing Preferences for Configuration of Wireless Facilities (in order of preference)

1. Collocation

Mounted on an existing wireless telecommunications facility.

2. Roof-mounted

Mounted on the roof of a building and screened from view.

3. Building-mounted

Mounted on the side of a building and screened from view.

4. Mounted on existing pole

Mounted on an existing pole that is not otherwise modified.

5. Mounted on a replacement pole

Mounted on a new pole that replaces an existing pole.
May raise the height of the existing pole.

6. Mounted on a new telecommunication tower

New tower constructed on property outside of public right-of-way.

Proposed Preferences for Building-Mounted Wireless Facilities

Preferred

- ▶ Façade-concealed antennas
- ▶ Faux Architectural Elements
- ▶ Rooftop Concealment
- ▶ Architecturally designed stand-alone towers
- ▶ Athletic field lights

Less Preferred

- ▶ Façade-mounted antennas
- ▶ Faux trees
- ▶ Pole-mounted facilities



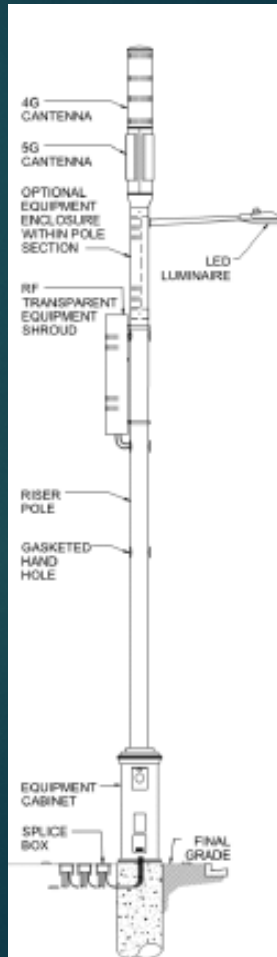
Proposed Preferences for Wireless Facilities within Rights-of-Way

Preferred

- ▶ Use of light poles wherein all equipment is within the pole or underground.

Less Preferred

- ▶ Use of existing or replacement utility poles.
- ▶ Stand-alone poles in areas where there are no existing utility poles.
- ▶ Use of light poles wherein equipment is not completely within the pole or underground.



Expand Design Guidelines...

- ▶ Design facilities to be consistent with adjacent landscape design.
- ▶ Retain existing, mature trees wherever feasible.
- ▶ Design and construct underground vaults to protect existing street trees.
- ▶ Retain landscaping proposed to screen, conceal, complement, or soften the appearance of the facility.
- ▶ Provide passive louvers/ventilation rather than mechanical ventilation where feasible.

Planning Commission Actions

Recommend that the City Council approve:

- ▶ Resolution 2022-__, Wireless Telecommunications Facilities CEQA Resolution
- ▶ Ordinance 2022-__, Wireless Telecommunications Facilities Locational Standards
- ▶ Resolution 2022-__, Wireless Telecommunications Facilities Design Guidelines

Public and Carrier Comments on Proposed Ordinance and Design Guidelines



Planning Commission Actions

Recommend that the City Council approve:

- ▶ Resolution 2022-__, Wireless Telecommunications Facilities CEQA Resolution
- ▶ Ordinance 2022-__, Wireless Telecommunications Facilities Locational Standards
- ▶ Resolution 2022-__, Wireless Telecommunications Facilities Design Guidelines