













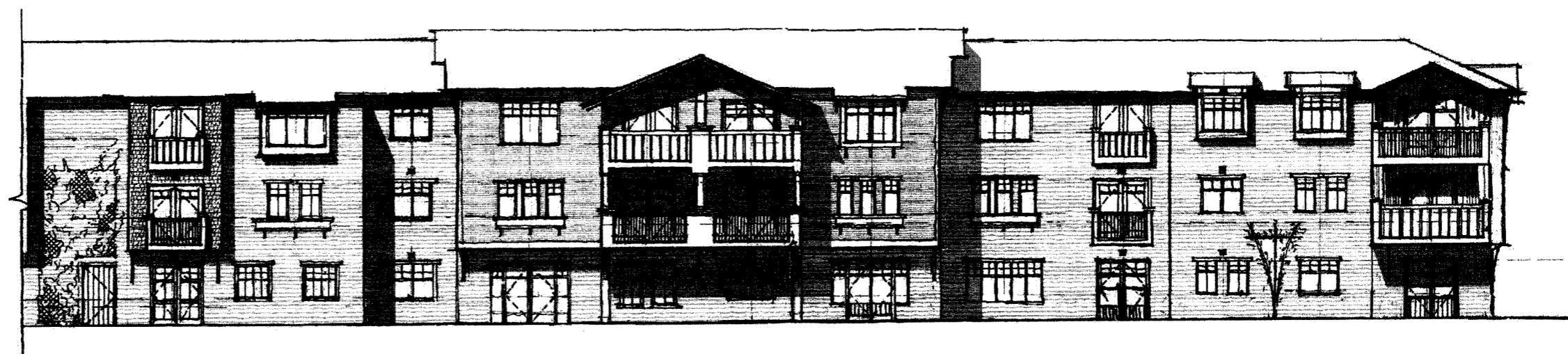




4 | BLDG. A - EAST ELEVATION  
1/8" = 1'-0"



3 | BLDG. A - ENLARGED NORTH ELEVATION  
1/8" = 1'-0"



2 | BLDG. A - ENLARGED NORTH ELEVATION W  
1/8" = 1'-0"



1 | BLDG. A - WEST ELEVATION  
1/8" = 1'-0"

COMMUNITY/PROJECT SITE



373 PINE LANE  
LOS ALTOS, CA.

OWNER:



**ABHOW**

American Baptist Homes of the West

DEVELOPMENT CONSULTANT:



DESIGN TEAM:



2001 North Lamar Street,  
Suite 400  
Dallas, Texas 75202  
www.d2-architecture.com



CIVIL ENGINEERING  
Sande Engineering  
605 Castro Street  
Mountain View, CA 94041



Gain & Associates  
2571 Oak Canyon Rd  
San Ramon, CA 94583



MEP ENGINEERING  
Macedo - Hahn Lippert Burch (MHLB)  
530 Bush Street, Suite 300  
San Francisco, CA 94108



Frazee, Wiggorn & Carter (FWC)  
3140 Oak Ridge, Suite 300  
Walnut Creek, CA 94597



INTERIOR DESIGNER  
Interior Design Associates (IDA)  
618 Church Street, Suite 400  
Nashville, TN 37219



FOOD SERVICES DESIGNER  
JEM Associates  
833 Mt. Pleasant, Suite 1  
Pleasantville, NJ 08859

Seal:

NO ARCHITECTURAL  
REVISIONS PERMITTED  
ON THIS DRAWING

No. Date Revisions

D2 Project No: 10001.00  
Stage: SCHEMATIC DESIGN  
Date: JUNE 1, 2010  
Scale: 1/8" = 1'-0"

Dwg. Name:  
EXTERIOR ELEVATIONS -  
BUILDING A

Dwg. No.  
**3 - A4-2**

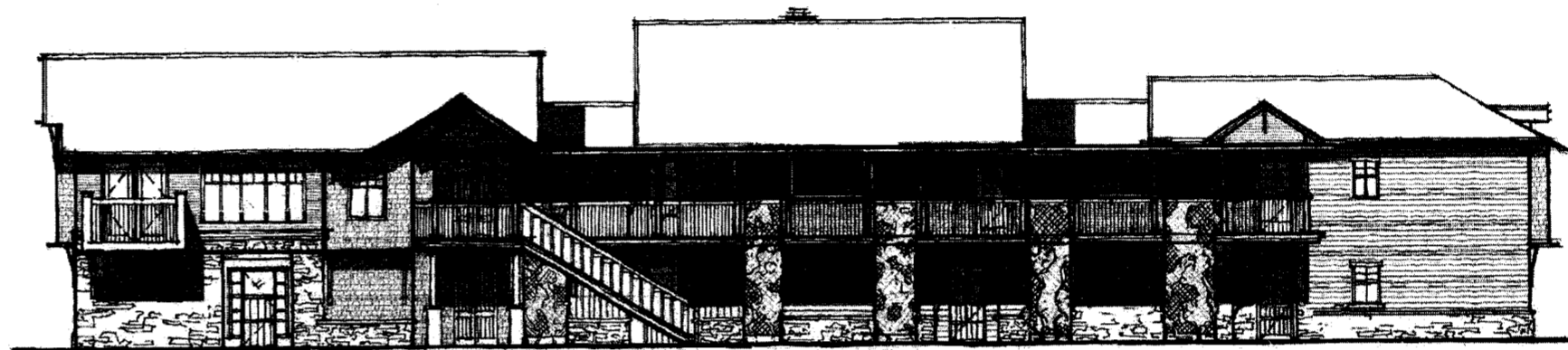
Phase 3  
6/2/10 4:30:38 PM







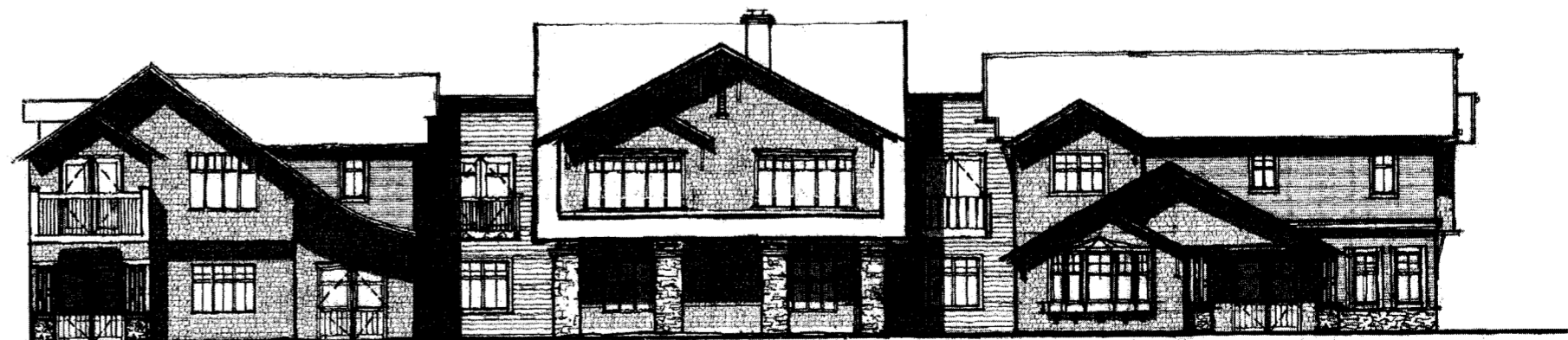
4 | BLDG. B - EAST ELEVATION  
1/8" = 1'-0"



3 | BLDG. B - NORTH ELEVATION (COURTYARD A)  
1/8" = 1'-0"



2 | BLDG. B - WEST ELEVATION  
1/8" = 1'-0"



1 | BLDG. B - SOUTH ELEVATION (PINE LANE)  
1/8" = 1'-0"

COMMUNITY/PROJECT SITE:



373 PINE LANE  
LOS ALTOS, CA

OWNER:



**ABHOW**

American Baptist Homes of the West

DEVELOPMENT CONSULTANT:



DESIGN TEAM:



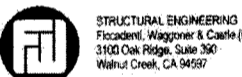
CIVIL ENGINEERING  
Structural Engineering  
800 Castro Street  
Mountain View, CA 94041



LANDSCAPE ARCHITECTURE  
Gates & Associates  
2871 Crow Canyon Rd  
San Ramon, CA 94583



MEP ENGINEERING  
MacNeil - Nash Lippay Burch (MLNB)  
530 Bush Street, Suite 300  
San Francisco, CA 94108



STRUCTURAL ENGINEERING  
Fiscardi, Wiggover & Carter (FWCSE)  
3100 Oak Ridge, Suite 300  
Walnut Creek, CA 94597



INTERIOR DESIGNER  
Interior Design Associates (IDA)  
618 Church Street, Suite 400  
Nashville, TN 37219



FOOD SERVICES DESIGNER  
JEM Associates  
803 Mt. Road, Suite 1  
Piscataway, NJ 08852

Seal:

SCHEMATIC DESIGN  
NOT FOR CONSTRUCTION  
OR REGULATORY APPROVAL

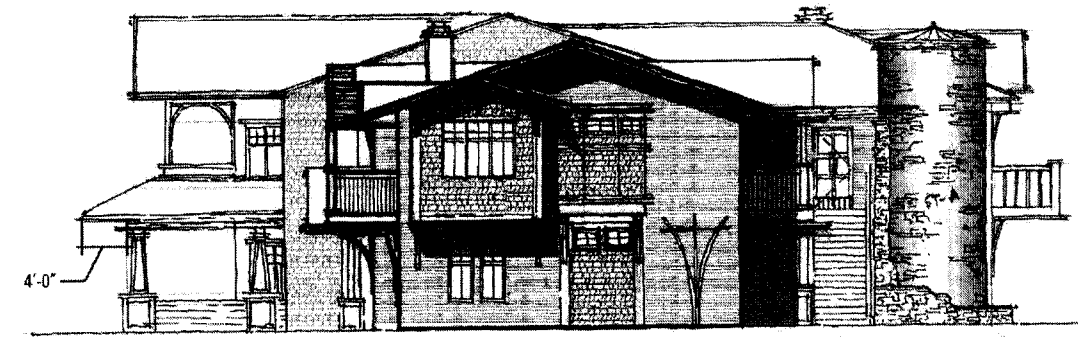
No. Date Revisions

D2 Project No: 10001.00  
Stage: SCHEMATIC DESIGN  
Date: AUGUST 09, 2010  
Scale: 1/8" = 1'-0"

Dwg. Name:  
EXTERIOR ELEVATIONS -  
BUILDING B

Dwg. No.  
**3 - A4-4**

Phase 3  
SEP 2010 4:28:03 PM



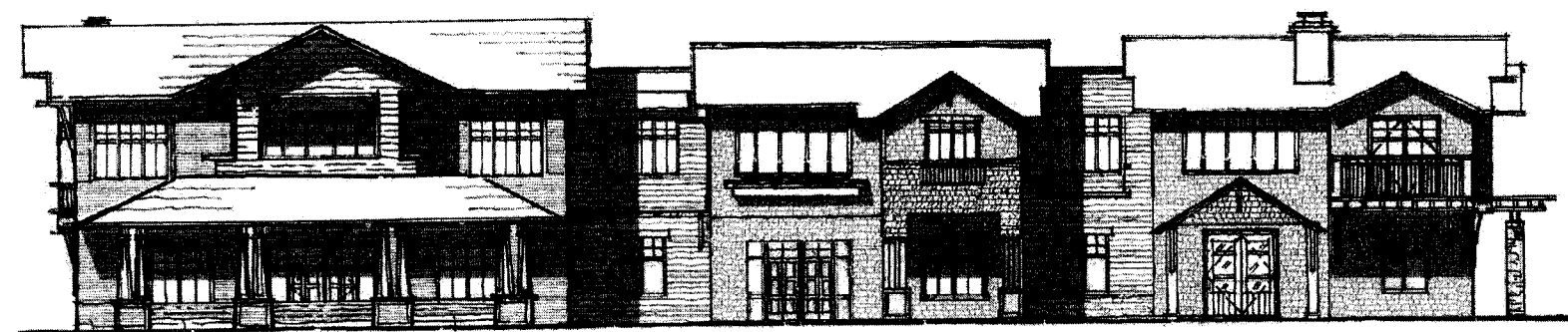
7 | BLDG. C - EAST ELEVATION  
1/8" = 1'-0"



2 | BLDG. C - NORTH ELEVATION  
1/8" = 1'-0"

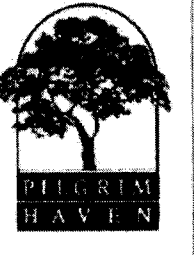


3 | BLDG. C - WEST ELEVATION  
1/8" = 1'-0"



1 | BLDG. C - SOUTH ELEVATION (PINE LANE)  
1/8" = 1'-0"

COMMUNITY/PROJECT SITE:



373 PINE LANE  
LOS ALTOS, CA.

OWNER:



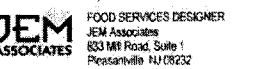
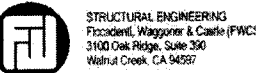
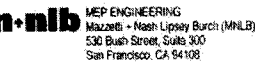
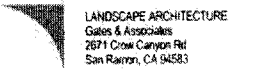
**ABHOW**

American Baptist Homes of the West

DEVELOPMENT CONSULTANT:



DESIGN TEAM:



Seal:



No. Date Revisions

D2 Project No: 10001.00  
Stage: SCHEMATIC DESIGN  
Date: AUGUST 12, 2010  
Scale: 1/8" = 1'-0"

Dwg. Name:  
EXTERIOR ELEVATIONS -  
BUILDING C

Dwg. No.

**3 - A4-5**

Phase 3

5/27/2010 4:46:13 PM