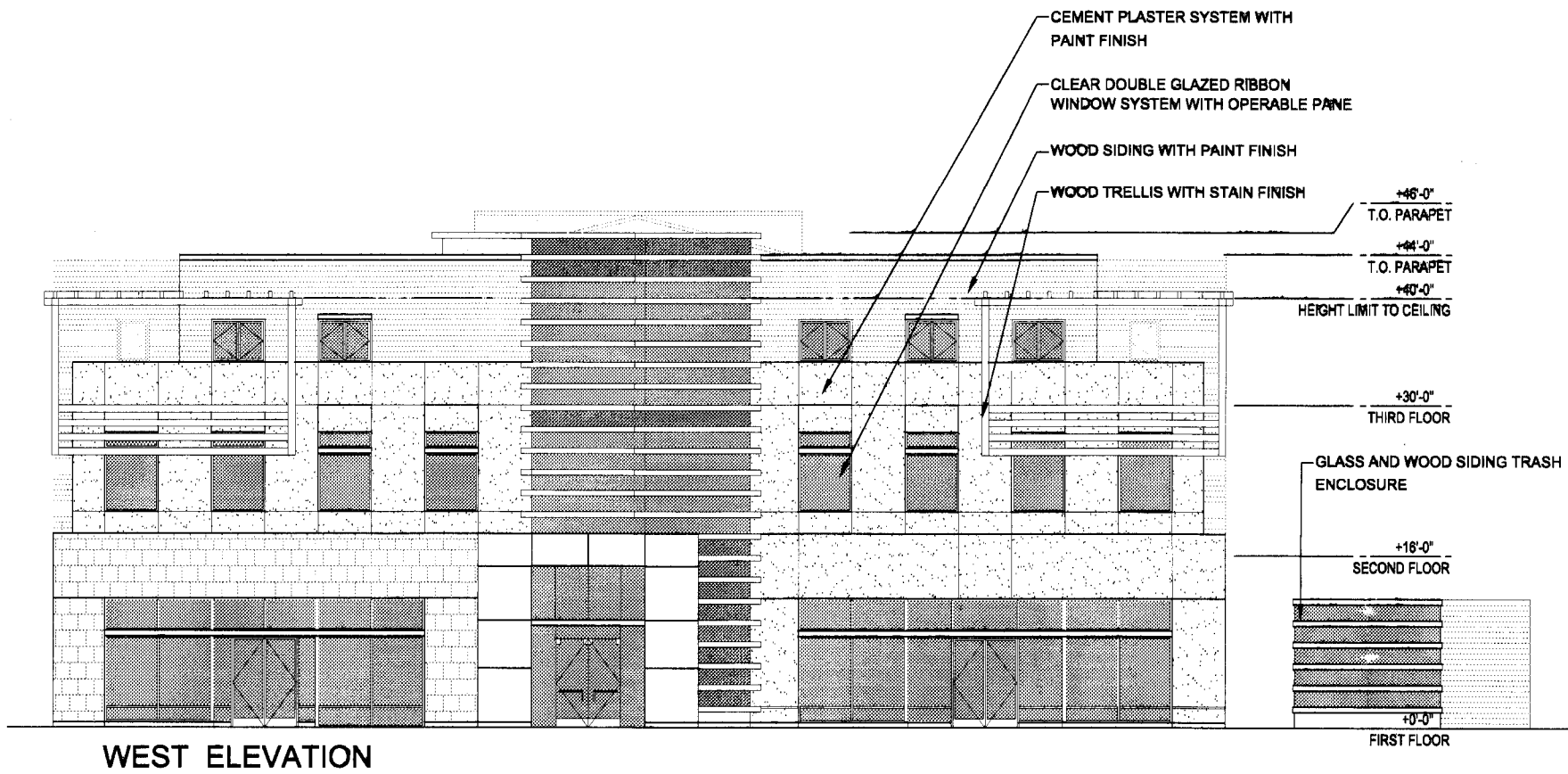
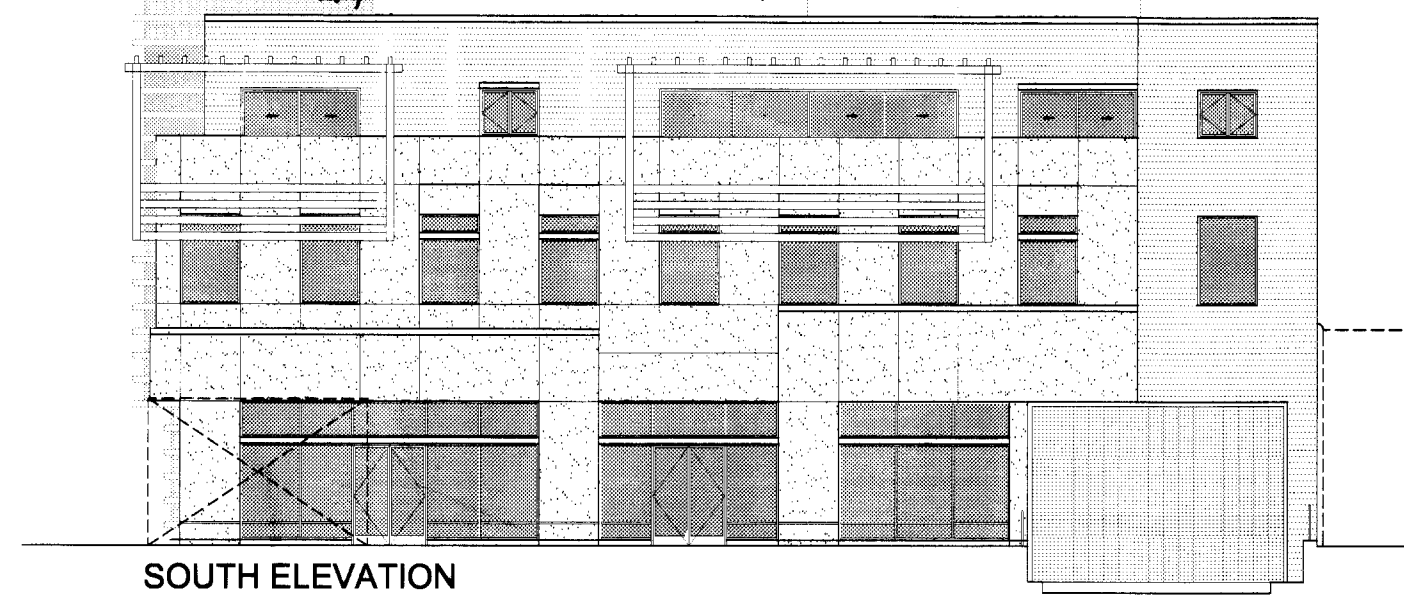


*Revision*  
**APPROVED**  
 PLANNING DIVISION  
 FILE NO. 07-0-01  
 PERMIT NO. \_\_\_\_\_  
 BY AB DATE Sept. 16, 2009

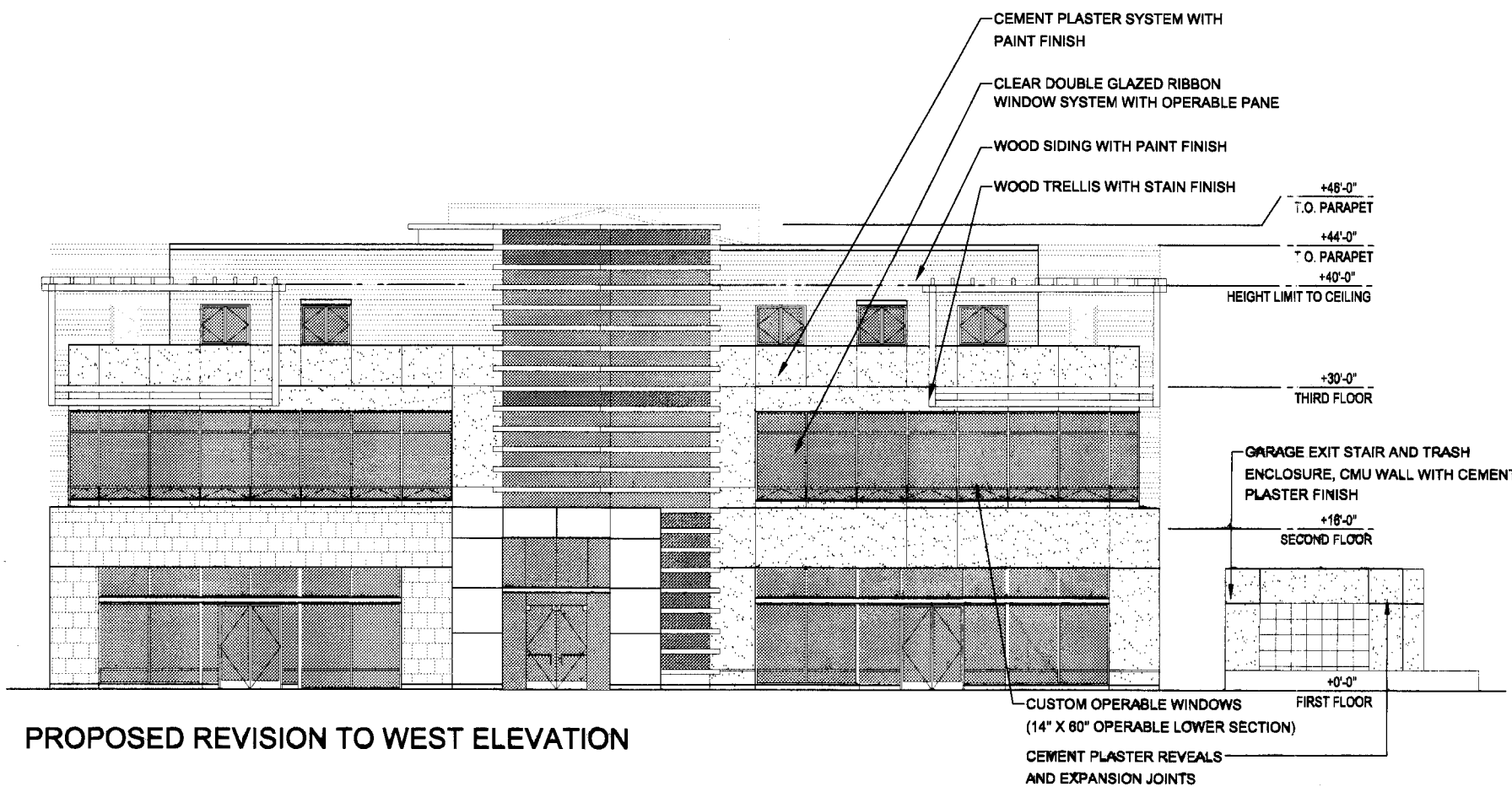
RECEIVED  
 AUG 28 2009  
 CITY OF LOS ALTOS  
 PLANNING



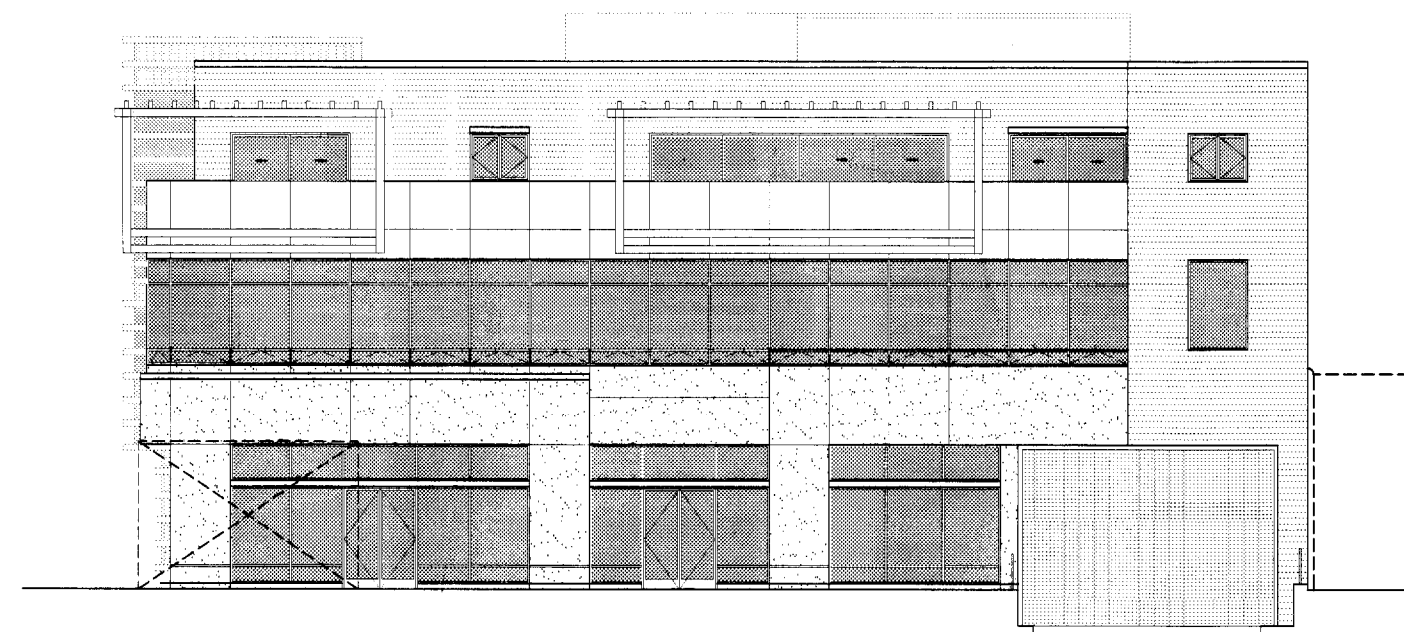
WEST ELEVATION



SOUTH ELEVATION



PROPOSED REVISION TO WEST ELEVATION



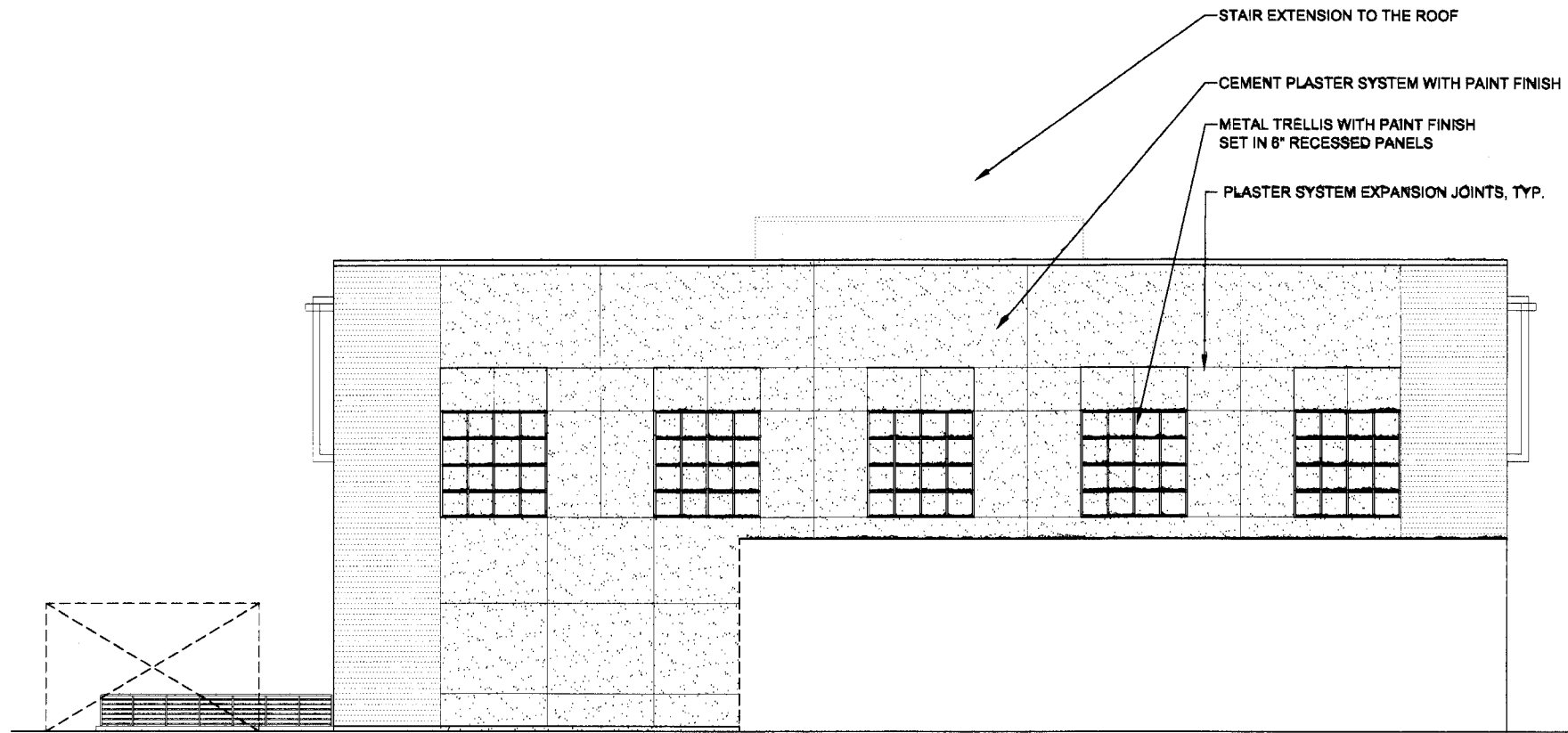
PROPOSED REVISION TO SOUTH ELEVATION

**K**  
 KENNETH RODRIGUES & PARTNERS, INC  
 466 NORTH WHISMAN ROAD, STE 200  
 MOUNTAIN VIEW, CA 950.965.0700

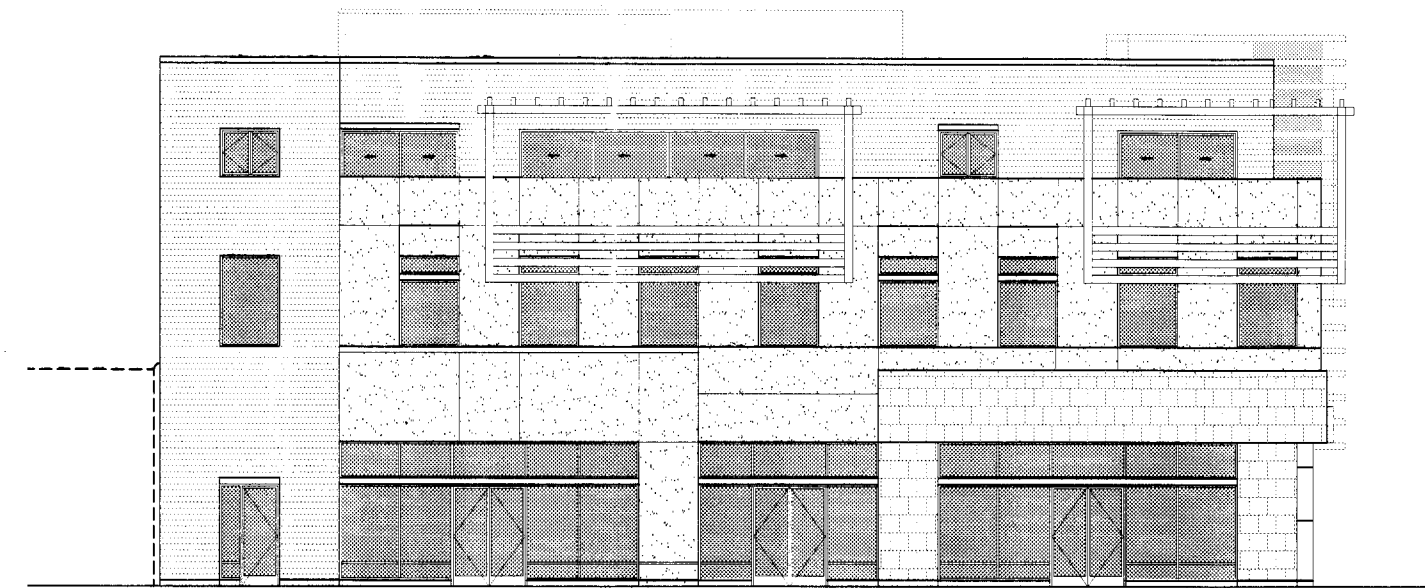
**240 THIRD STREET**  
 THE TAN GROUP  
 LOS ALTOS, CALIFORNIA

8.28.09 PLANNING RESUBMITTAL  
 WINDOW REVISION  
 KRP 124.010

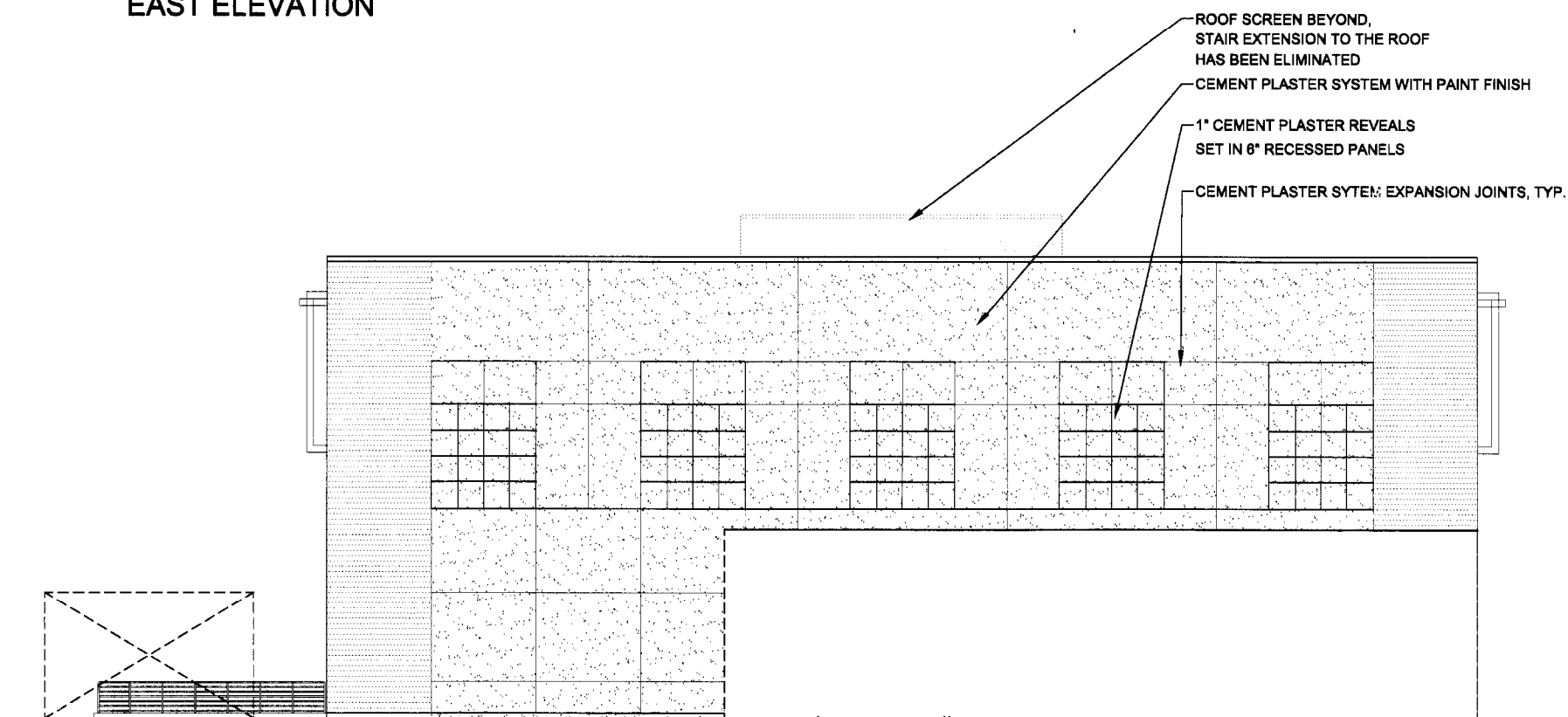
**A1**  
 PROPOSED ELEVATION  
 REVISION



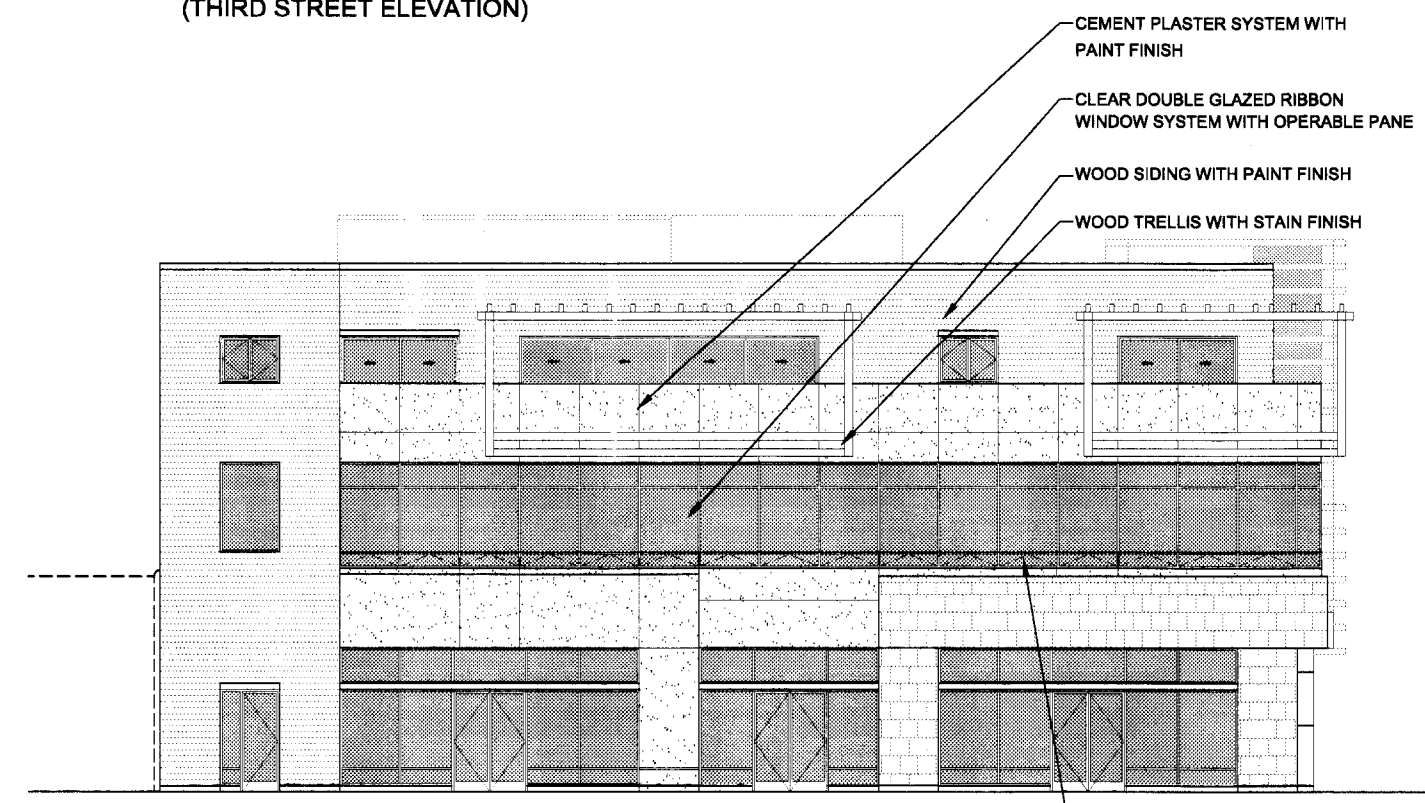
EAST ELEVATION



NORTH ELEVATION  
(THIRD STREET ELEVATION)



PROPOSED REVISION TO EAST ELEVATION

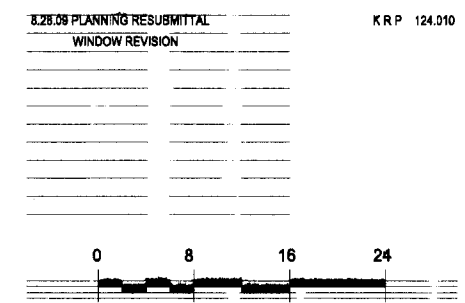


PROPOSED REVISION TO NORTH ELEVATION  
(THIRD STREET ELEVATION)



240 THIRD STREET

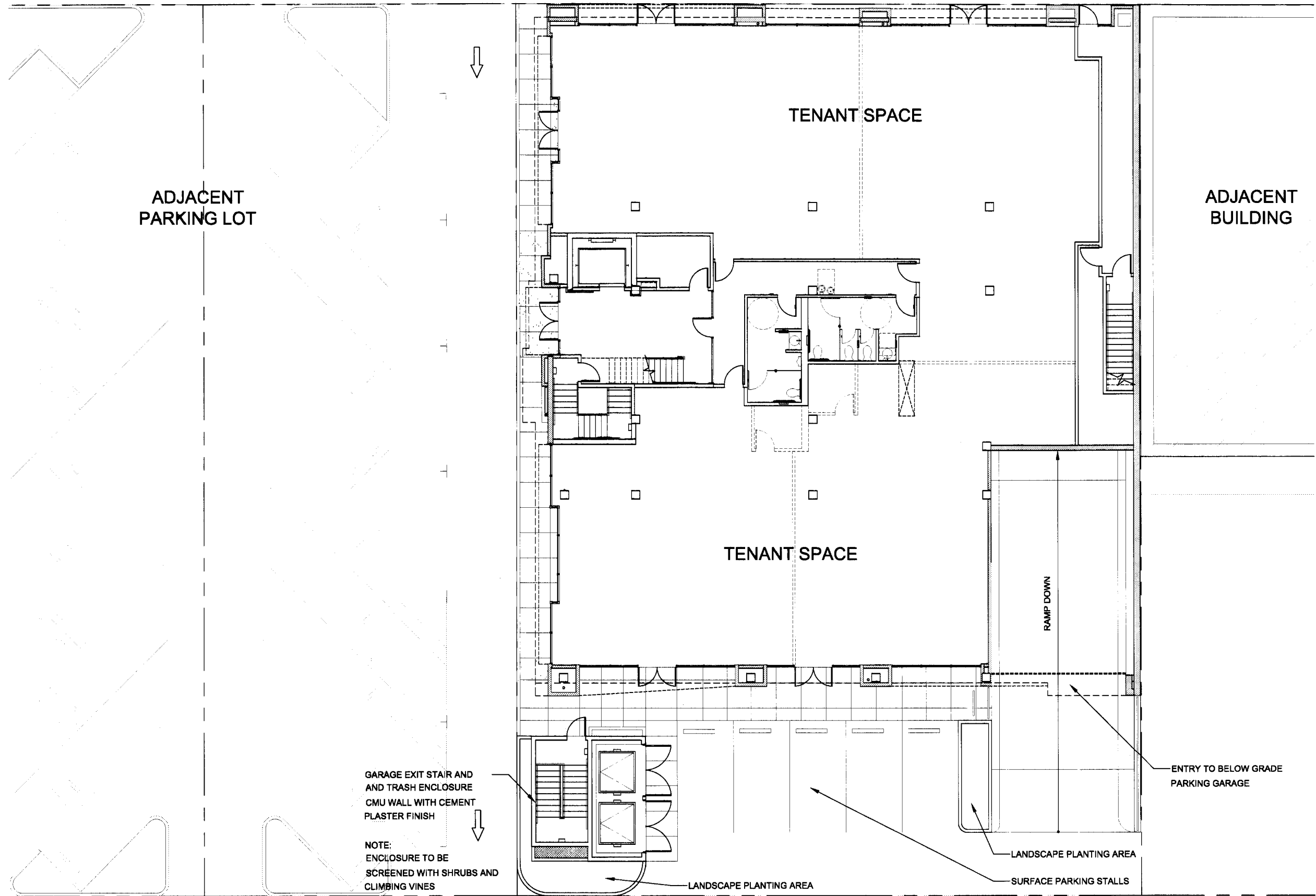
THE TAN GROUP  
LOS ALTOS, CALIFORNIA



**A2**  
PROPOSED ELEVATION  
REVISION



THIRD STREET



ADJACENT  
PARKING LOT

TENANT SPACE

ADJACENT  
BUILDING

TENANT SPACE

RAMP DOWN

ENTRY TO BELOW GRADE  
PARKING GARAGE

GARAGE EXIT STAIR AND  
AND TRASH ENCLOSURE  
CMU WALL WITH CEMENT  
PLASTER FINISH

NOTE:  
ENCLOSURE TO BE  
SCREENED WITH SHRUBS AND  
CLIMBING VINES

LANDSCAPE PLANTING AREA

LANDSCAPE PLANTING AREA

SURFACE PARKING STALLS



KENNETH RODRIGUES & PARTNERS, INC  
456 NORTH WHISMAN ROAD, STE 200  
MOUNTAIN VIEW, CA 950.965.0700

# 240 THIRD STREET

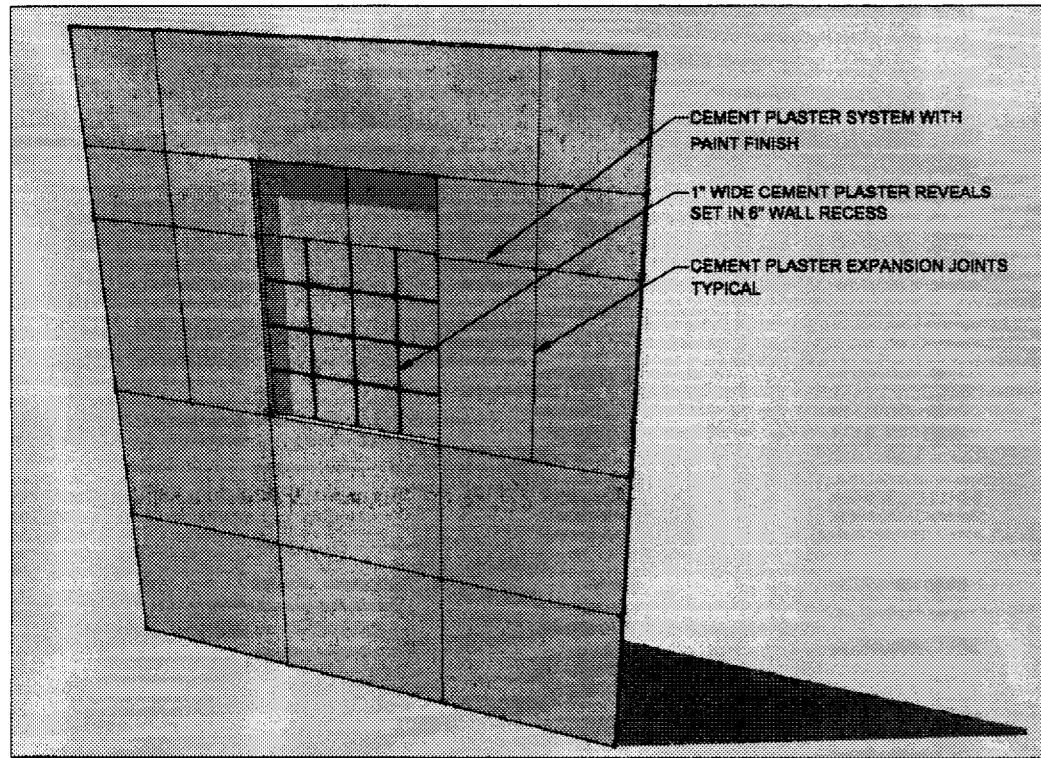
THE TAN GROUP  
LOS ALTOS, CALIFORNIA

8.28.09 PLANNING RESUBMITTAL  
WINDOW REVISION

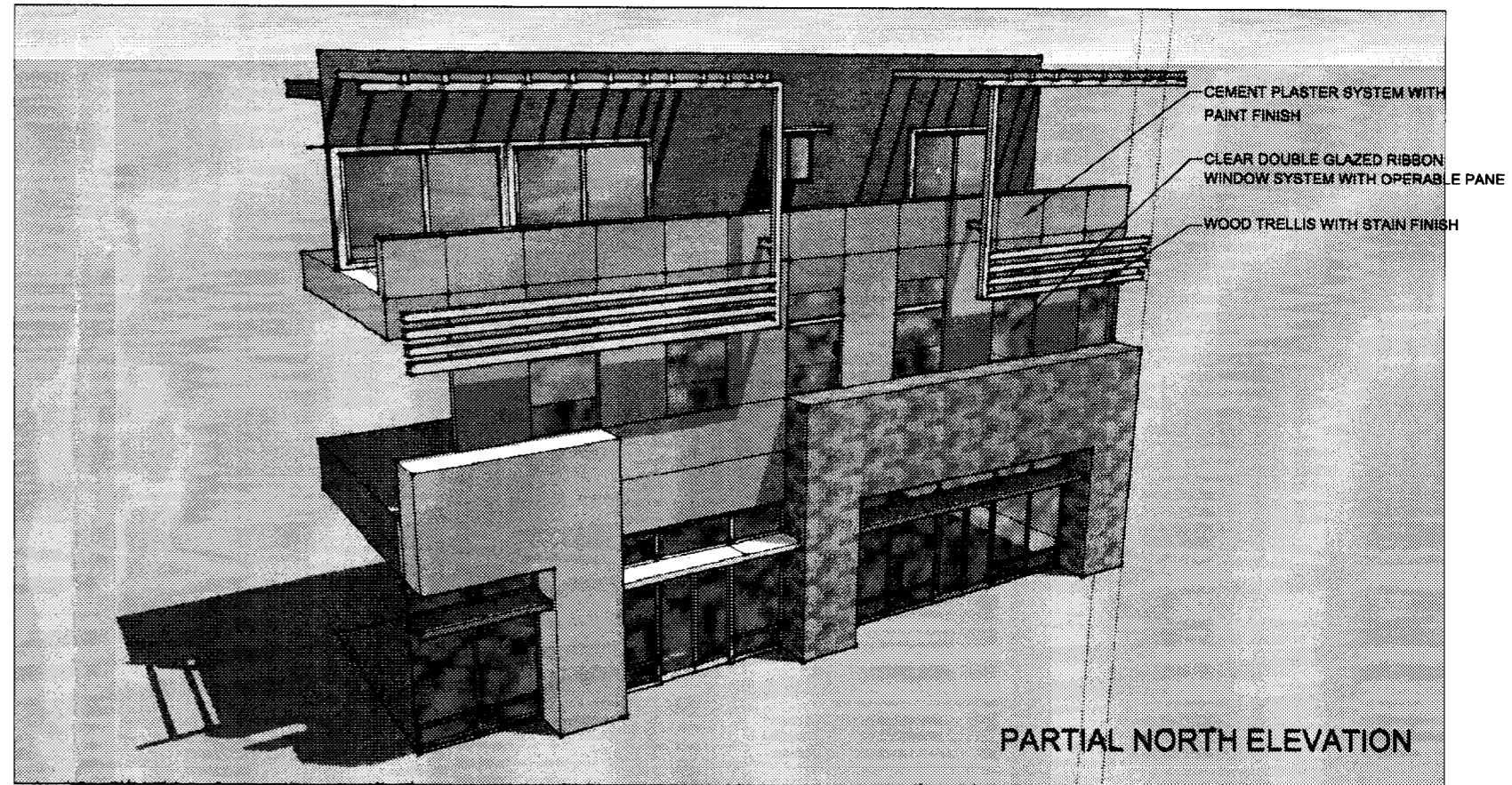
KRP 124.010



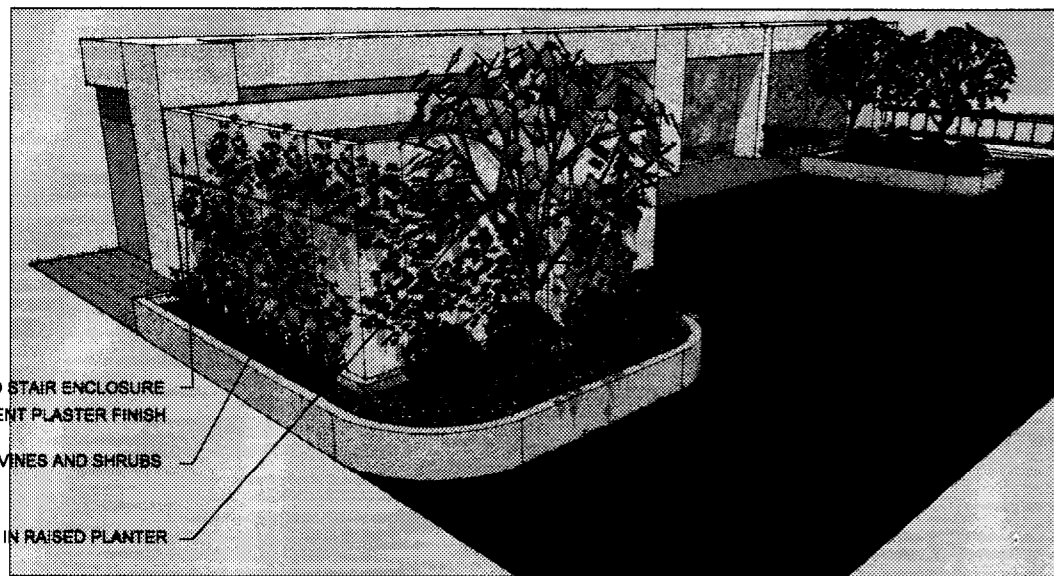
**A4**  
SITE PLAN



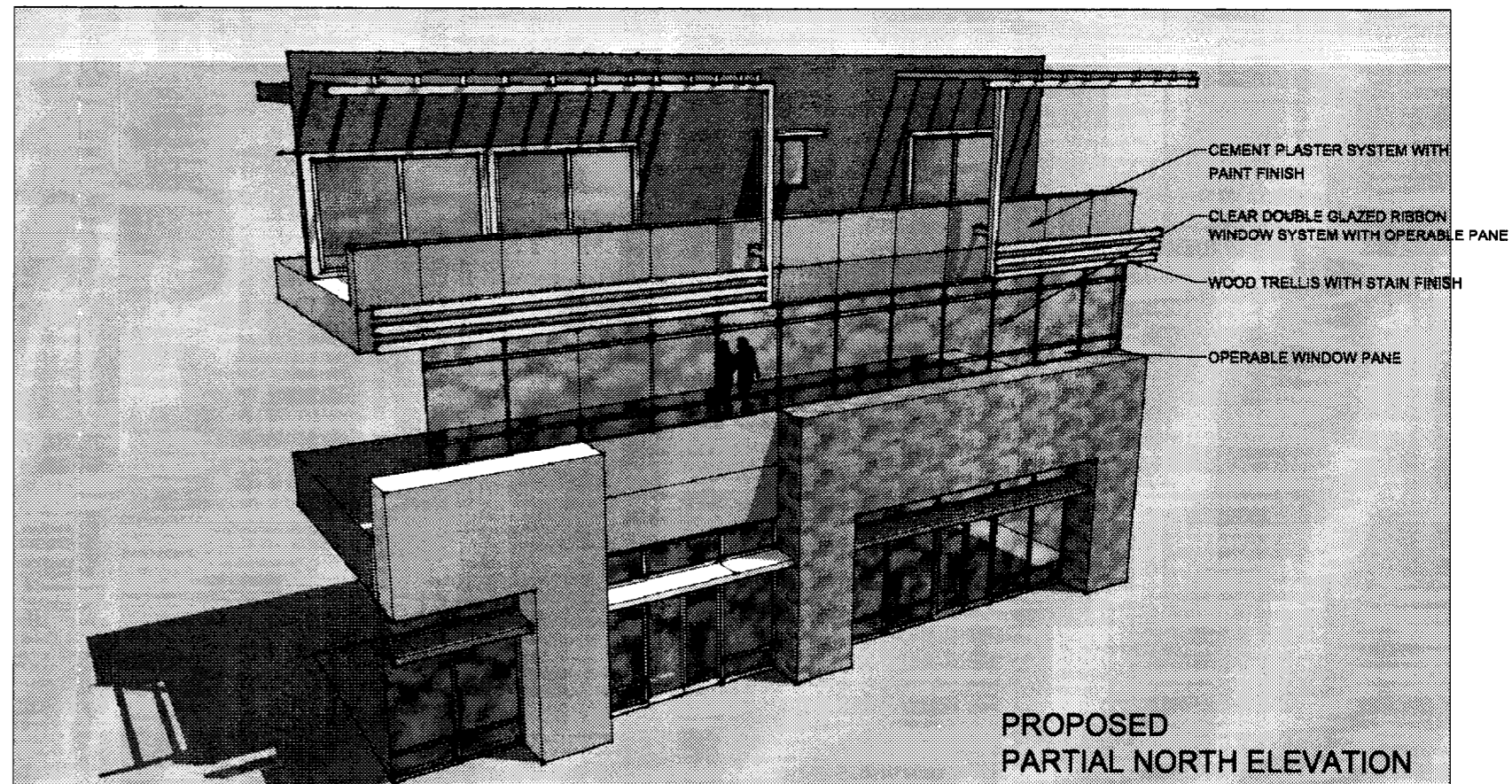
PROPOSED RECESSED CEMENT PLASTER WALL PANEL  
(PARTIAL ELEVATION - TYPICAL ALONG EAST ELEVATION)



PARTIAL NORTH ELEVATION



TRASH ENCLOSURE WITH LANDSCAPE SCREENING

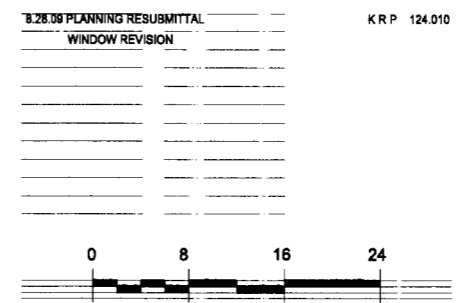


PROPOSED PARTIAL NORTH ELEVATION



240 THIRD STREET

THE TAN GROUP  
LOS ALTOS, CALIFORNIA



A5  
PARTIAL 3D VIEWS

