



**Parks  
Make  
Life  
Better!**

**City of Los Altos  
Parks & Recreation Commission**

**Public Workshop  
Fenced-in Dog Park &  
Off-Leash Hours Program  
Proposals**

**February 12, 2020**



# Introductions

## Parks and Recreation Commission

Chair **Yong Yeh**

\*Vice Chair **Stuart Eckmann**

Commissioner **Pete Dailey**

Commissioner **Tanya Lindermeier**

\*Commissioner **Teresa Morris**

\*Commissioner **Scott Spielman**

Commissioner **Jonathan Weinberg**

\* Dog Park Subcommittee

City Council Liaison **Lynette Lee Eng**

## City of Los Altos Staff

**Donna Legge**

Recreation & Community Services Director

**Manny Hernandez**

Municipal Services Director

**Trevor Marsden**, Management Analyst

**Jaime Chew**, Recreation Manager

**Bridget Matheson**, Recreation Supervisor

**Casey Richardson**, Office Assistant II

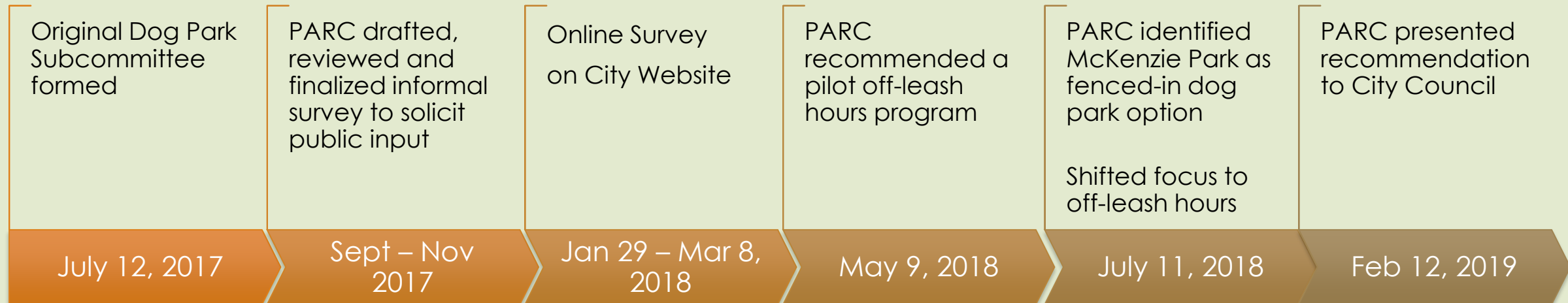
# Purpose of Public Workshops

- Provide background and information
- Fulfill City Council direction
- Review dog park types
- Review proposed locations
- Engage and solicit input from neighbors, dog owners and general public
- Answer questions

# Timeline

FY 2008-2009 City Council included a Dog Park Project in the Budget. The Project was placed on hold until a site was identified.

May 8, 2012 City Council adopted the Los Altos Park Plan including the aspiration to identify a dog park location including a 2010 scientific Godbe survey, criteria for dog park and ideal design features.



## City Council Direction – February 12, 2019

City Council directed staff to work with the Parks and Recreation Commission to fully develop a pilot program proposal with an implementation plan to include off-leash dog hours at one or two parks, with limited hours, a public noticing plan and educational signage. Concurrently, staff and the Parks and Recreation Commission shall further explore and develop a recommendation for a designated, fenced-in dog park. The proposal for the off-leash hours shall come back to Council for final review before implementation, along with the PARC recommendation for a fenced-in dog park.

# Parks and Recreation Commission

- Formation of existing Parks and Recreation Commission on May 8, 2019
- New Recreation & Community Services Director/Commission Liaison started on July 2, 2019
- New Dog Park Subcommittee appointed on August 14, 2019
- Reviewed and discussed dog park types, options, locations, outreach and workshop format from August 2019 to February 2020
- Recommended two locations for two pilot off-leash hours program at Hillview Baseball Field and Heritage Oaks Park
- Recommended two options for one fenced-in dog park at McKenzie Park and South Lincoln Park
- The Commission will hold a special meeting on Wednesday, March 18, 2020, to discuss a final recommendation for City Council

# Public Outreach Efforts



**Parks Make Life Better!**

**4 Public Workshops: Options for a Dedicated Fenced-In Park & Off-Leash Hours Program**

The City of Los Altos Parks and Recreation Commission is hosting four drop-in workshops for the public to provide feedback on two different types of dog park options.

<p><b>Wednesday, February 12</b></p> <p>Workshop 1: 7 to 8pm Workshop 2: 8 to 9pm</p> <p><b>Shoup Park</b> Garden House 400 University Avenue</p>	<p><b>Saturday, February 29</b></p> <p>Workshop 3: 10 to 11am Workshop 4: 11am to 12pm</p> <p><b>Grant Park</b> Multi-Purpose Room 1570 Holt Avenue</p>
---	---

**For more information contact:**  
Donna Legge, Commission Liaison  
Recreation and Community Services Director  
(650) 947-2790 or [dlegge@losaltosca.gov](mailto:dlegge@losaltosca.gov)  
[Losaltosca.gov/dogpark](http://Losaltosca.gov/dogpark)




Flyer



The City of Los Altos Parks and Recreation Commission is hosting four drop-in workshops for the public to provide feedback on two different types of dog park options.

**For more information contact:**  
Donna Legge, Commission Liaison  
Recreation and Community Services Director  
(650) 947-2889 or [dlegge@losaltosca.gov](mailto:dlegge@losaltosca.gov)  
[Losaltosca.gov/dogpark](http://Losaltosca.gov/dogpark)

**Interactive workshops will include:**

- A review of history, criteria, pros & cons
- Fenced-in Dog Park options at McKenzie Park and South Lincoln Park
- Off-Leash Hours Program options at Hillview Baseball Field and Heritage Oaks Park
- Opportunity to comment, anonymously

**Parks Make Life Better!**



Postcards

City of Los Altos  
Recreation & Community Services  
1 North San Antonio Road  
Los Altos, CA 94022



**4 Public Workshops: Options for a Fenced-In Dog Park and Off-Leash Hours Program**

<p><b>Wed, February 12</b></p> <p>Workshop 1: 7 to 8pm Workshop 2: 8 to 9pm</p> <p><b>Shoup Park</b> Garden House 400 University Avenue</p>	<p><b>Sat, February 29</b></p> <p>Workshop 3: 10 to 11am Workshop 4: 11am to 12pm</p> <p><b>Grant Park</b> Multi-Purpose Room 1570 Holt Avenue</p>
---	--

**Parks Make Life Better!**

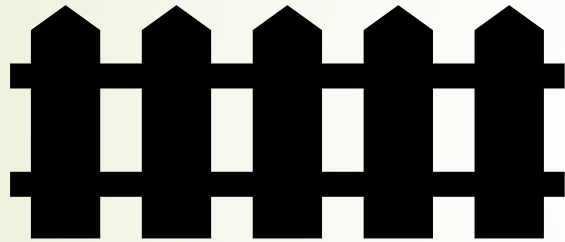


## Public Outreach Efforts

- Press Release and paid ads in Town Crier
- City and Department social media (Constant Contact, Instagram, Next door, Website, Facebook, Eventbrite, etc.)
- City Manager's Weekly Update
- City News & Announcements
- 1,000-foot Notice to four locations (500 ft is required) = 3,250 pieces mailed, including previous dog obedience students and previous PARC dog park speakers (last 2 years)
- Distribution of Flyers (City Hall, library, centers, Animal Control, vets & dog businesses, etc.)
- Park Signs (11 parks)



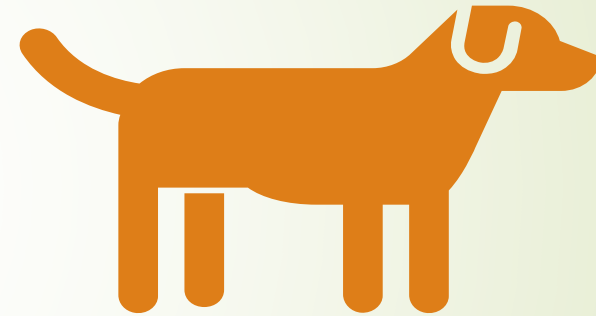
# Dog Park Types:



## **Fenced-in Dog Park**

Dedicated

Open from sunrise to sunset

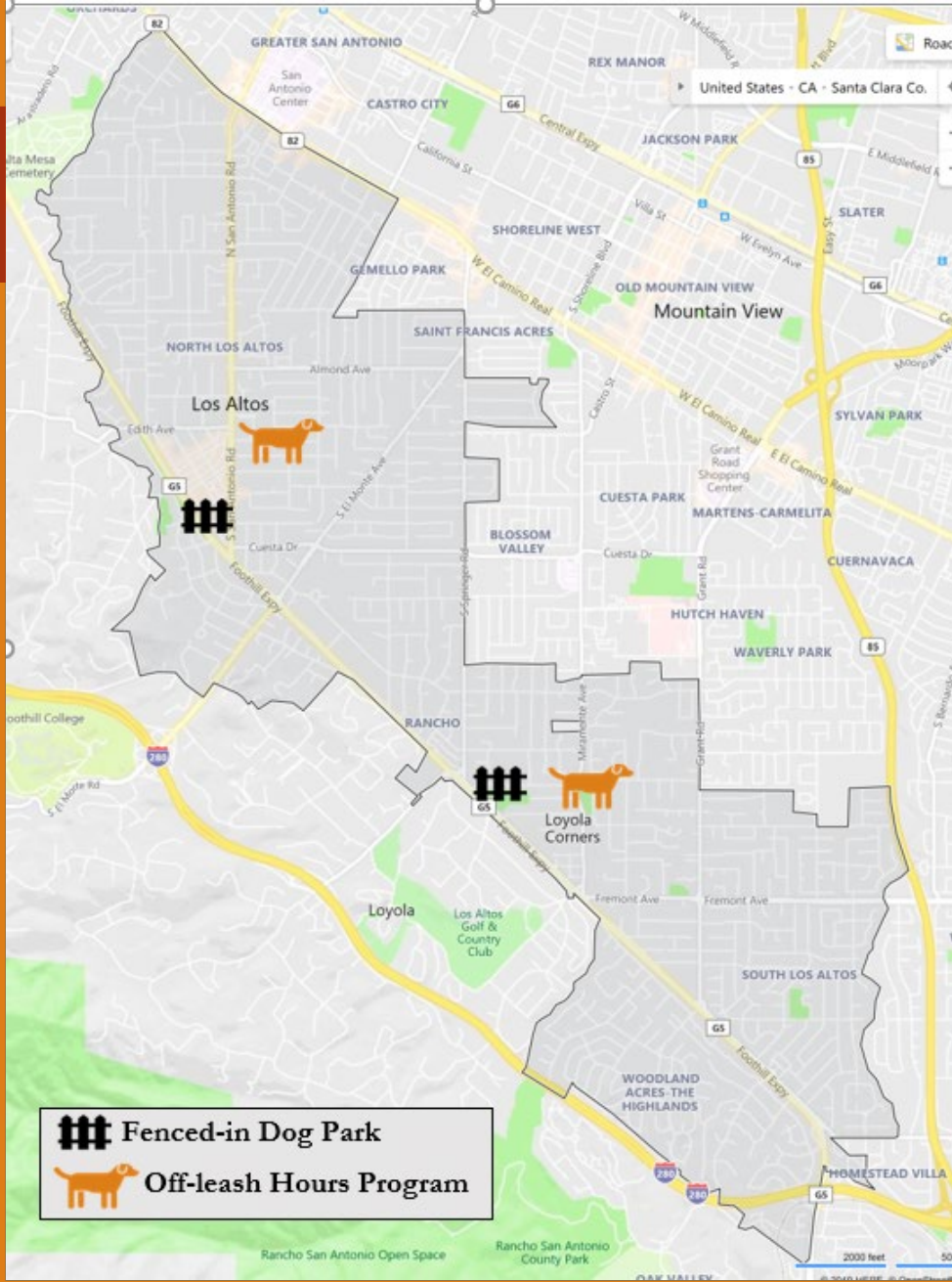


## **Off-Leash Hours Program**

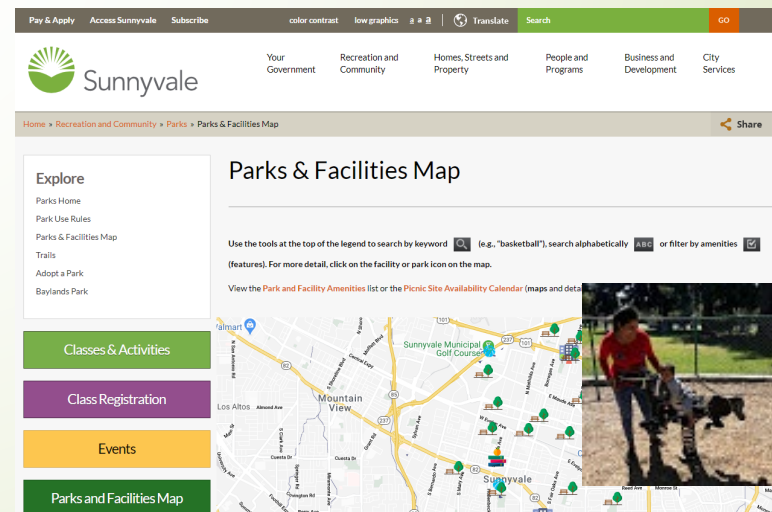
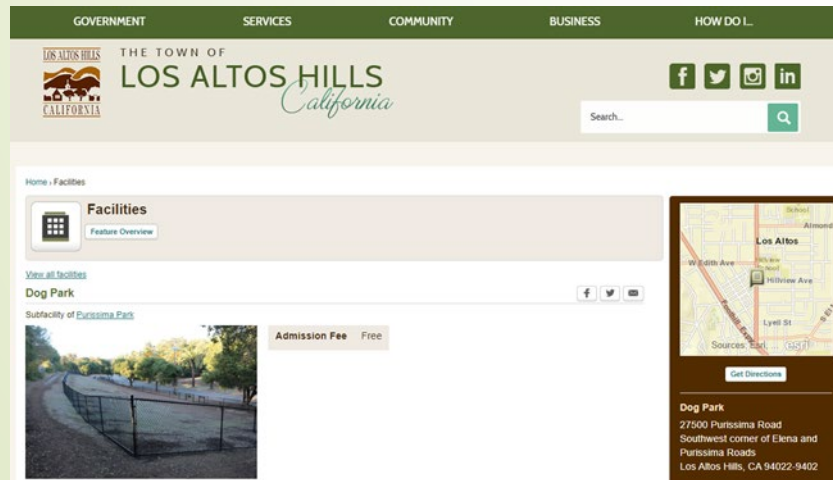
Shared with an existing venue

during specific hours

# Dog Park City Map



# Neighboring Cities with Dog Park Programs



# Did You Know...

- Approximately 3,800 dogs are licensed in Los Altos
- There are 30,500 residents in Los Altos
- There are 10,700 households in Los Altos (2010 Census)
- Approximately 35% of households have dogs





# Off-Leash Hours Program

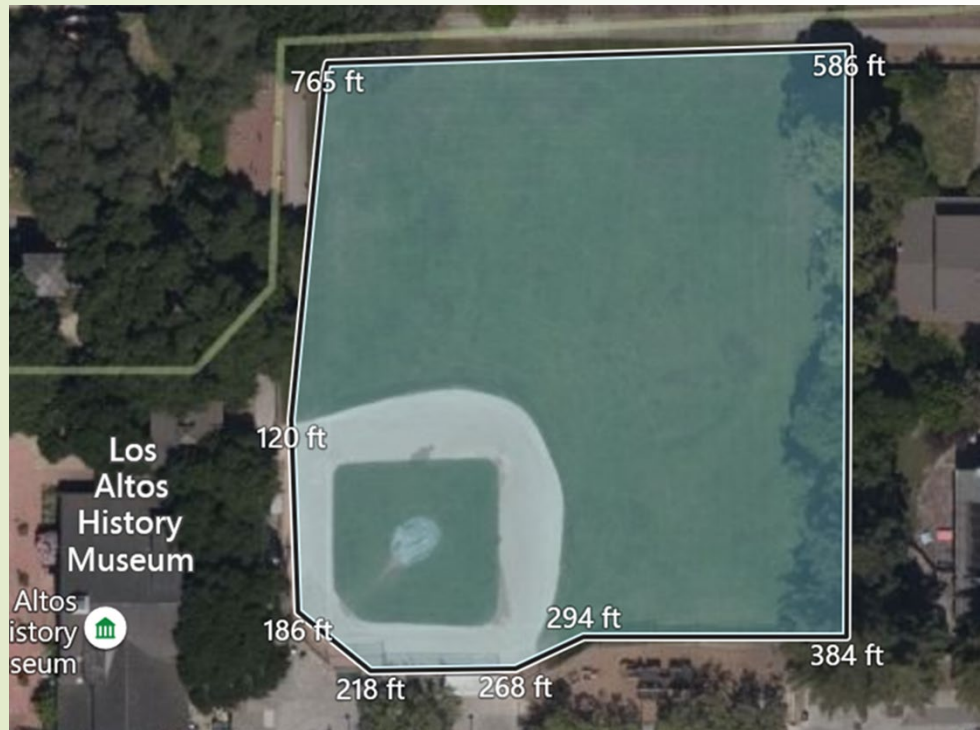
## Design Criteria

- Sufficient room for off-leash activities
- Sufficient buffer between the park and residences/places of worship
- Access to water (drinking fountain or spigot)
- Seating located away from perimeter fence
- Covered trashcans/waste disposal stations
- Free doggie bags
- Pilot area should not be used as a sports field
- At least one pilot location should be convenient to north and south Los Altos
- Sufficient parking
- Clear and well-placed signs that post off-leash park rules



# Off-Leash Hours Program

## Proposed Locations



**Hillview Baseball Field**



**Heritage Oaks Park**



# Proposed Off-Leash Hours

## Hillview Baseball Field

### February to October

#### Days

Saturday & Sunday  
Monday to Friday

#### Morning

6 to 9 am  
6 to 9 am

#### Evening

5 pm to sunset  
7 pm to sunset

## Heritage Oaks Park

### February to October

#### Days

Monday to Sunday  
Saturday & Sunday  
Monday to Friday

#### Morning

6 to 9 am

#### Evening

4 pm to sunset  
5:30 pm to sunset

### June to August

#### Days

Monday to Sunday

#### Morning

6 to 9 am

#### Evening

4 pm to sunset



16

## Evaluation of Pilot Program

- Feedback from residents and users
- Review of incidents reported to Palo Alto Animal Control and Los Altos PD
- Analysis of actual cost vs. expected cost
- Legal issues
- Field conditions
- Attendance and usage





# Fenced-in Dog Park

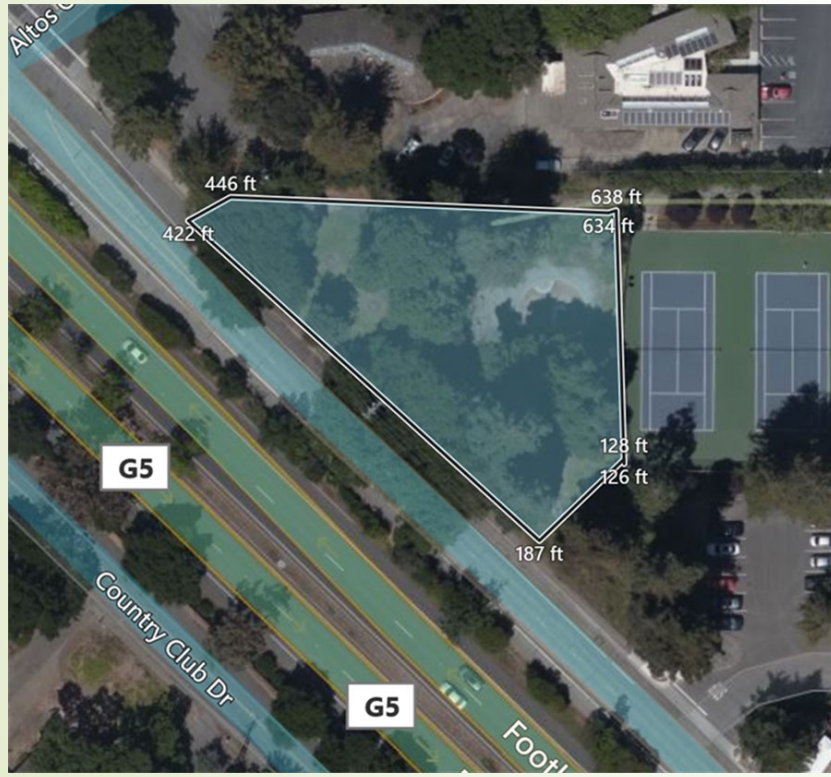
## Design Criteria

- Sufficient room for off-leash activities
- Access to bathrooms
- Double entry system
- Sufficient buffer between the park and residences/places of worship
- Access to water (drinking fountain or spigot)
- Surface medium and maintenance regimen to ensure sanitary conditions and a pleasant visit
- Small tables and seating away from perimeter fence
- Covered trashcans/waste disposal stations
- Free doggie bags
- Sufficient parking
- Clear and well-placed signs that post off-leash park rules



# Fenced-in Dog Park

## Proposed Locations



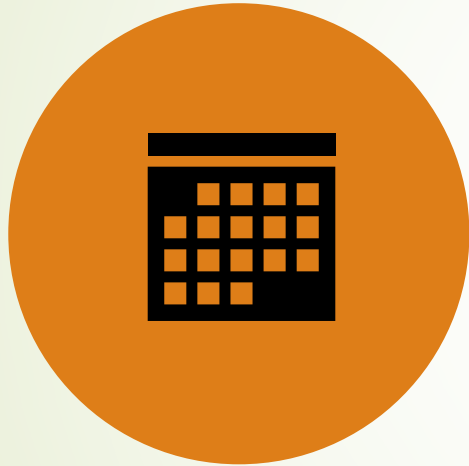
**McKenzie Park**



**South Lincoln Park**



## Fenced-in Dog Park Timeline & Funding



FY 2020-21  
PARK IMPROVEMENT PLAN





ALLOCATED BUT NOT APPROVED  
UP TO \$250,000 PARK-IN-LIEU FUNDS



# Next Steps - Instructions



<p><b>Please Print Legibly</b></p> <p>Name: _____</p> <p>Street Address: _____</p> <p>City: _____</p> <p>Email: _____</p> <p>Dog Owner:    Yes    No (Circle One)                    1</p>	<p><b>Off-Leash Hours Pilot Program Locations</b> </p> <p><b>SELECT ONE OPTION ONLY</b></p> <p><input type="checkbox"/> Hillview Baseball Field Off-Leash Hours:                    <input type="checkbox"/> I do not want an off-leash pilot program at all:</p> <p><input type="checkbox"/> Heritage Oaks Park Off-Leash Hours:                    <input type="checkbox"/> I want an off-leash pilot program but not at these locations:</p> <p>NOTE: If not in these locations, where: _____</p> <p><input type="checkbox"/> Both Locations Off-Leash Hours:                    1</p>
<p><b>Instructions</b></p> <ol style="list-style-type: none"> <li>1. Listen to the presentation</li> <li>2. Read all posters</li> <li>3. Consider each proposal (fenced-in dog park and off-leash hours) separately</li> <li>4. Select one off-leash hours option</li> <li>5. Select one fenced-in option</li> <li>6. Separate your cards along the perforations</li> <li>7. Drop your cards in the coordinating colored box</li> <li>8. Thank you for only participating once</li> </ol>	<p><b>Fenced-In Dog Park Pilot Locations</b> </p> <p><b>SELECT ONE OPTION ONLY</b></p> <p><input type="checkbox"/> McKenzie Park Fenced-In:                            <input type="checkbox"/> I do not want a fenced-in dog park at all</p> <p><input type="checkbox"/> South Lincoln Fenced-In:                            <input type="checkbox"/> I want a fenced-in pilot dog park but not at these locations:</p> <p>NOTE: If not in these locations, where: _____</p> <p><input type="checkbox"/> Both Locations Fenced-In:                            1</p>

- Read all posters
- Review pros & cons of each location
- Select 1 of 5 options for off-leash hours
- Select 1 of 5 options for fenced-in dog park
- Separate cards, place in color-coded boxes
- Talk to Commissioners or City staff
- Provide additional comments
- Thank you for Participating

**Comment Card**

\_\_\_\_\_

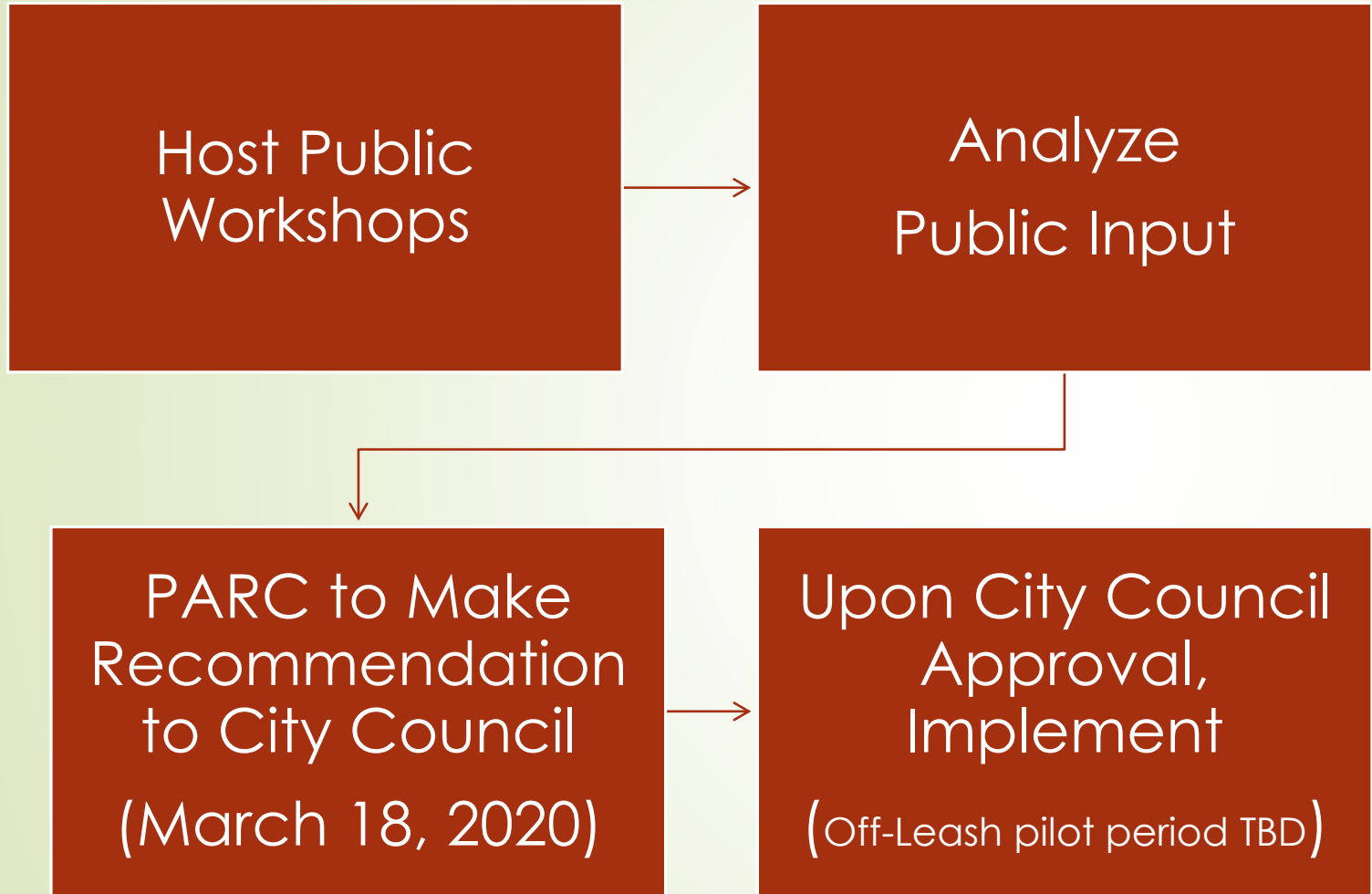
\_\_\_\_\_

\_\_\_\_\_

\_\_\_\_\_

Optional Contact Information: \_\_\_\_\_  
(Phone or Email)

May we contact you?  
(Check the box for yes)





# Questions

**Parks  
Make  
Life  
Better!**

*Creating Community through  
People, Parks and Programs*