

WOODLAND BRANCH LIBRARY  
PROPOSED EXPANSION PLANS

WHY EXPAND WOODLAND?

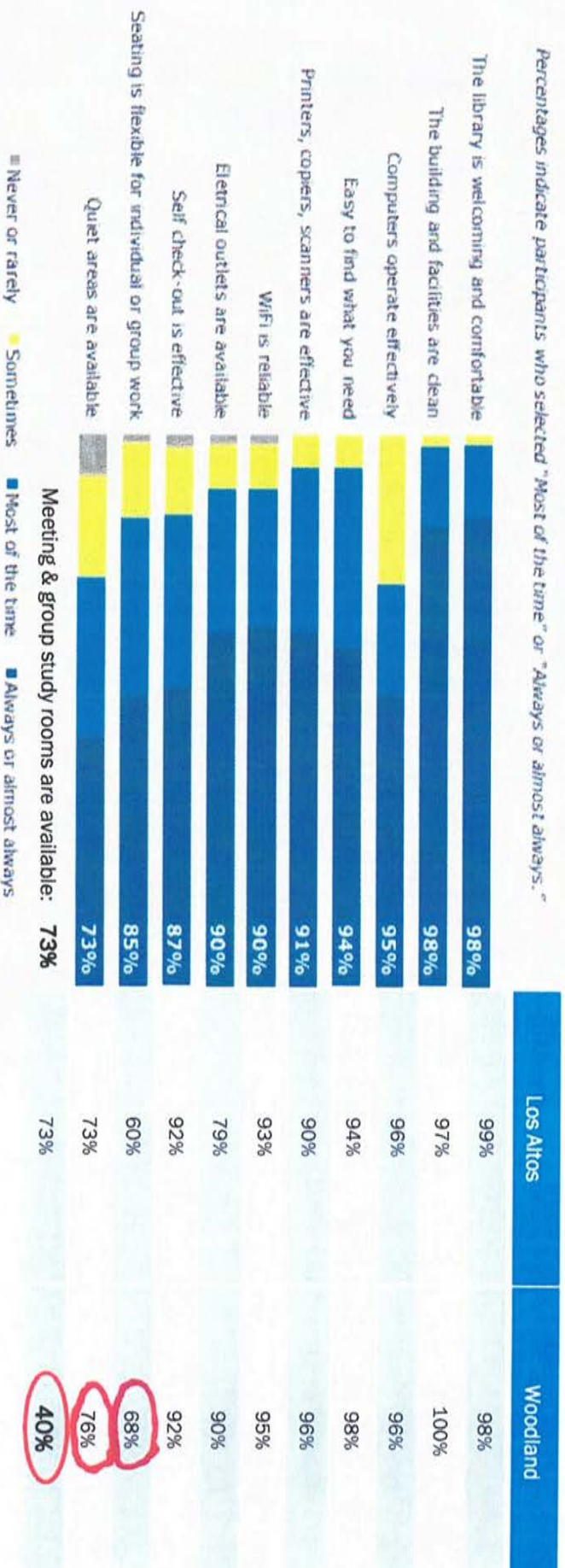
1. NOISE – ADULTS COMPLAIN THAT THERE IS NO QUIET SPACE
2. THERE IS NOT ENOUGH SPACE FOR ALL THE PROGRAMS THAT THE LIBRARY COULD PROVIDE
3. THE COMMUNITY NEEDS MEETING SPACE
4. THE SCCLD PATRONS' SURVEY DATA RE WOODLAND

# LOS ALTOS AND WOODLAND PATRONS POINT OUT NEED FOR MORE FLEXIBLE SEATING AND ADDITIONAL MEETING/GROUP SPACE

Facilities (n=6,091)

## SCCLD-Wide Survey Results

### Specific Library Results



Note: Percentages reflect only the population of respondents who answered affirmatively to these questions and excludes those who answered "Don't Know"

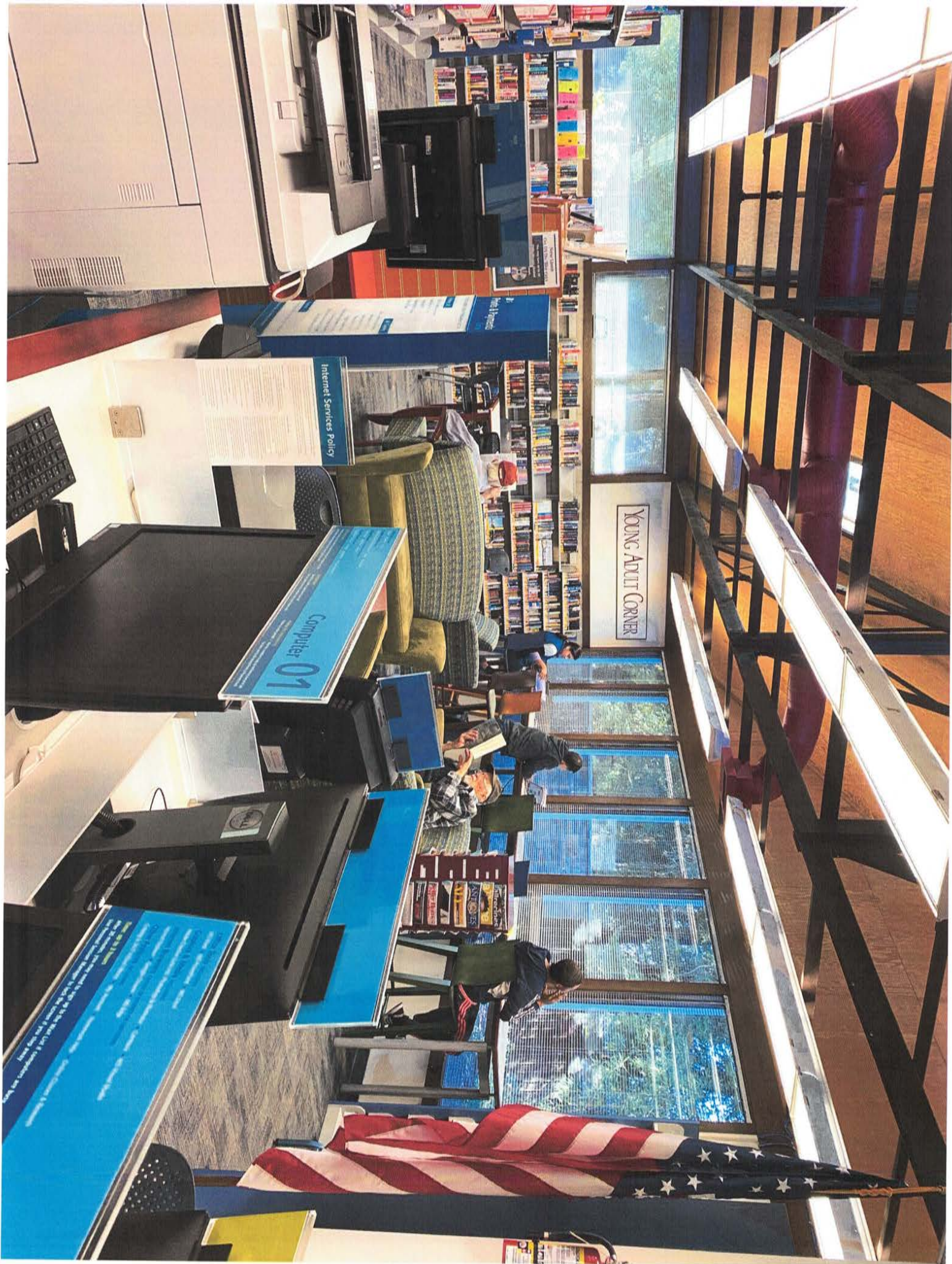




YOUNG ADULT CORNER

**Silicon Valley Reads**  
 MAKING **Women** READ  
 THE **CENTRAL MOUSE**  
 by **Michelle Wildgen**  
 The award-winning author of *The Girl on the Train* returns with a new novel that will keep you up at night.

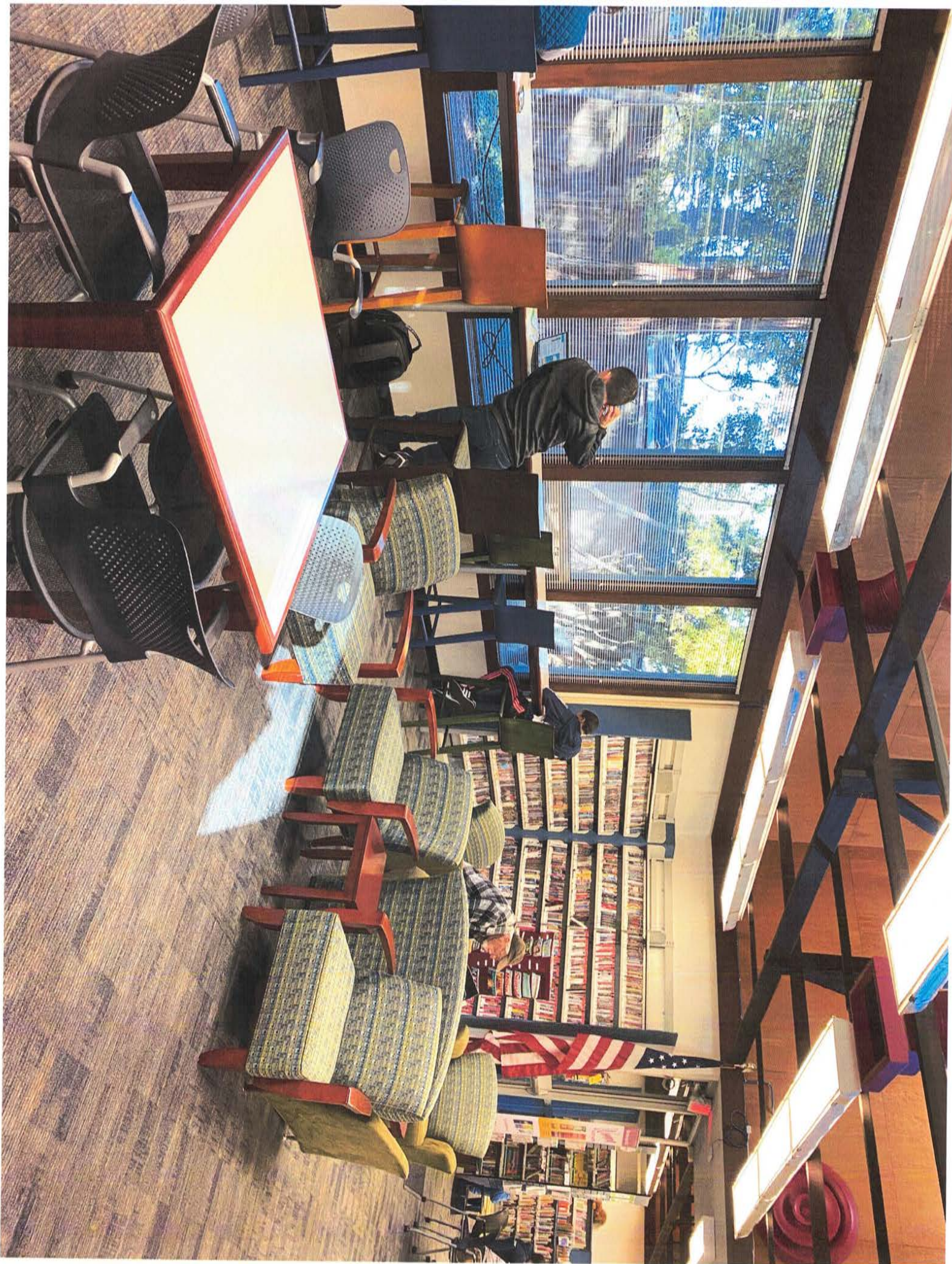
**Silicon Valley Reads**  
 SERRA CLARA LIBRARY  
 15000 SERRA CLARA BLVD  
 SAN JOSE, CA 95131  
 (408) 298-2200



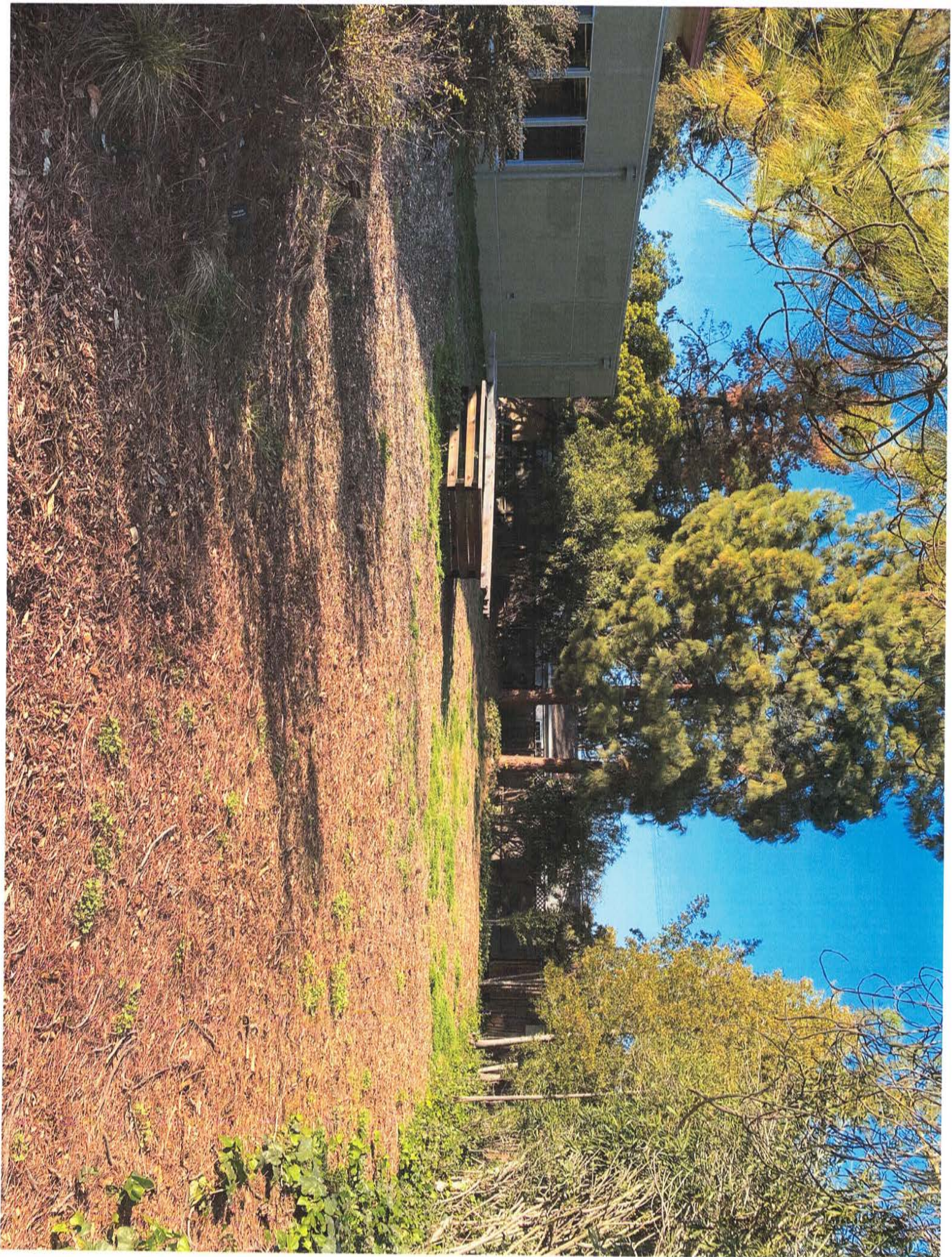
YOUNG ADULT CORNER

Computer 01

Internet Services Policy

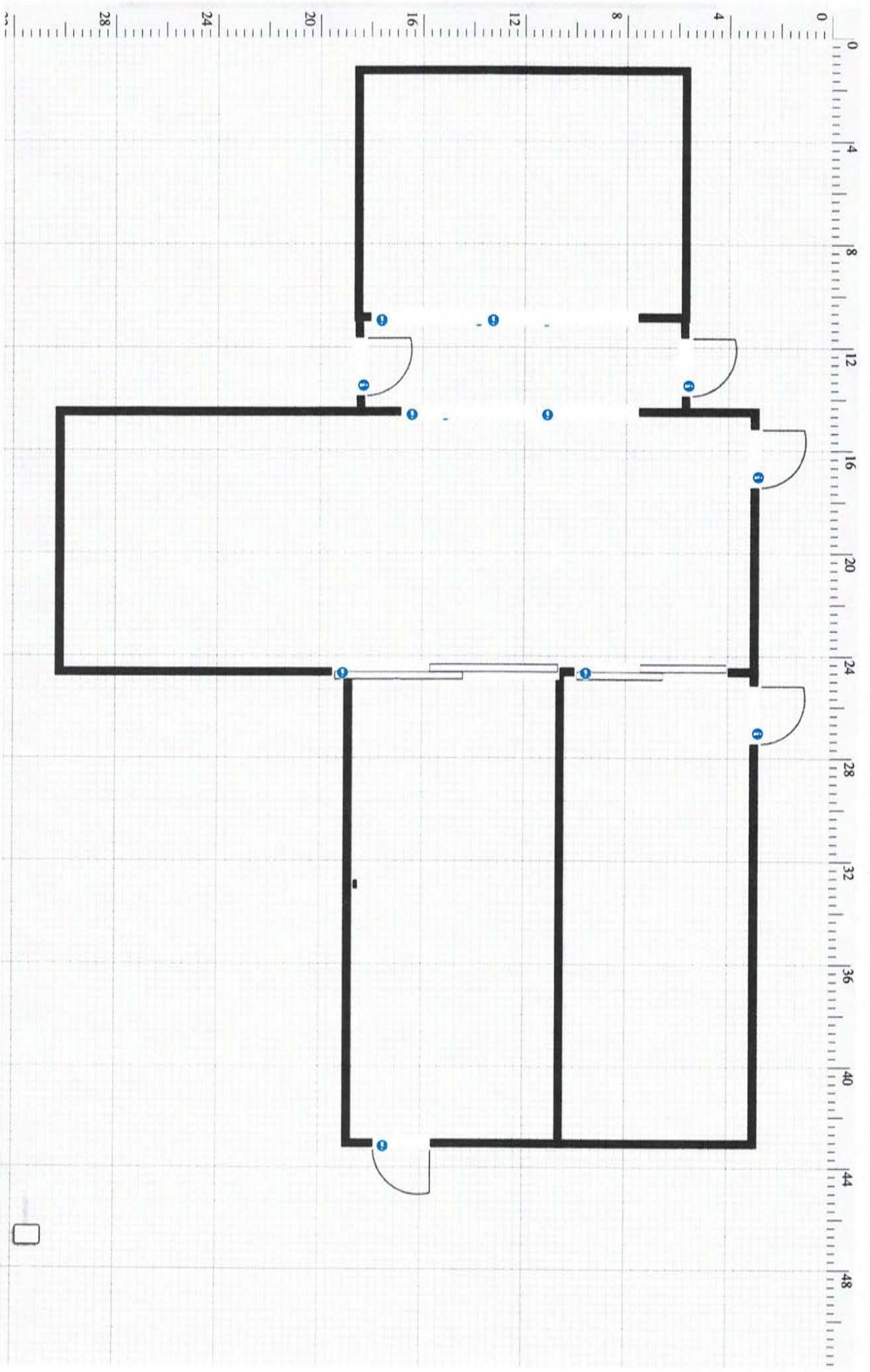


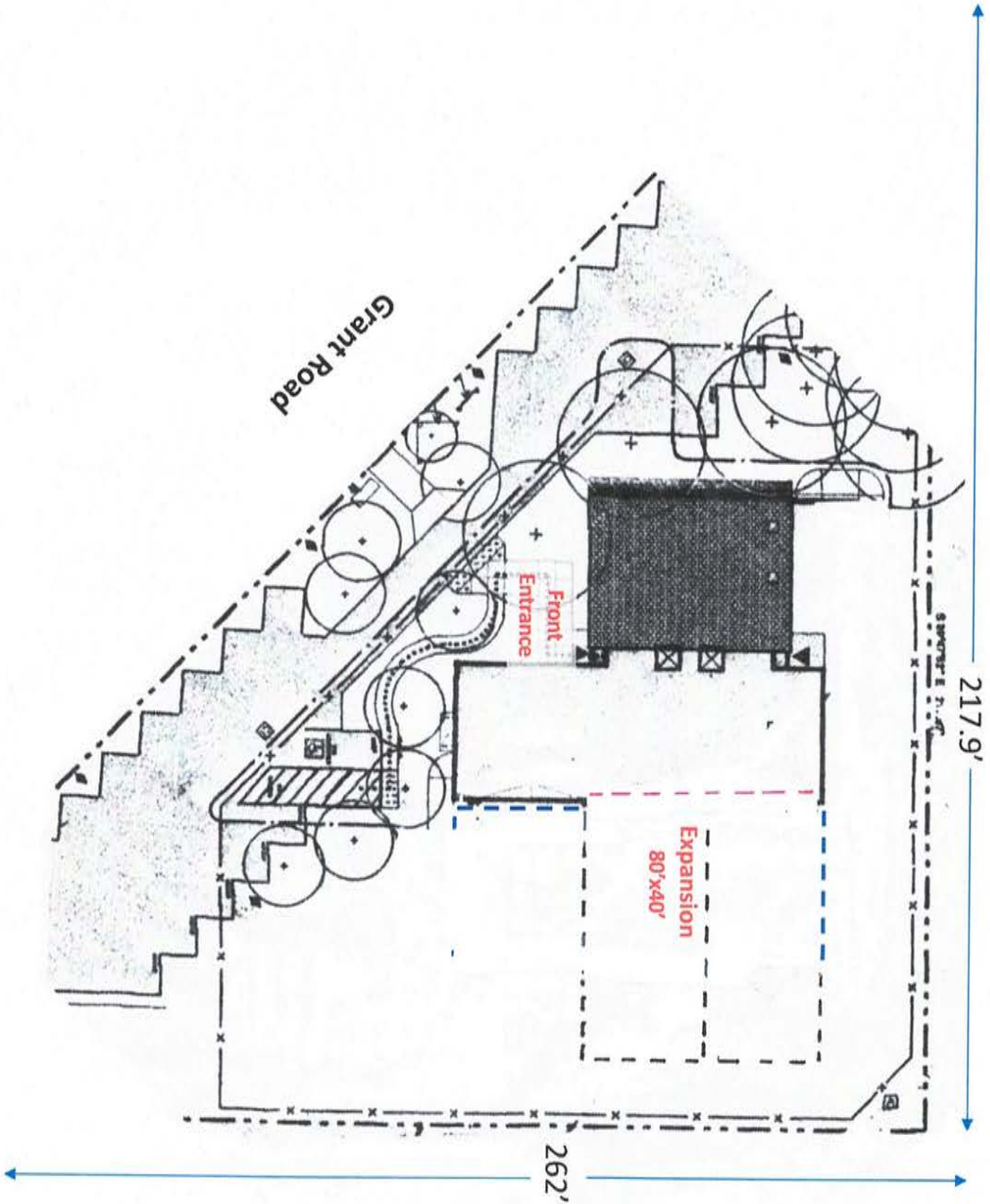












LEGEND: RED DOTTED  
 LINE DENOTES GLASS  
 WALL AND DOORS  
 TO EXPANSION ROOMS

## **COST ESTIMATES**

COST ESTIMATES RANGE FROM \$650/SQ FT TO \$1000/SQ FT

**3000 SQUARE FOOT ADDITION INCLUDING HVAC AND SITE PREPARATION**

**\$1.95 MILLION TO \$3.0 MILLION**

**5000 SQUARE FOOT ADDITION INCLUDING HVAC AND SITE PREPARATION**

**\$3.25 MILLION TO \$5.0 MILLION**