



Los Altos and Woodland Library

Library Commission Report – December 2020

Bryant Bao – Acting Community Librarian

LOS ALTOS LIBRARY SERVICES STATS

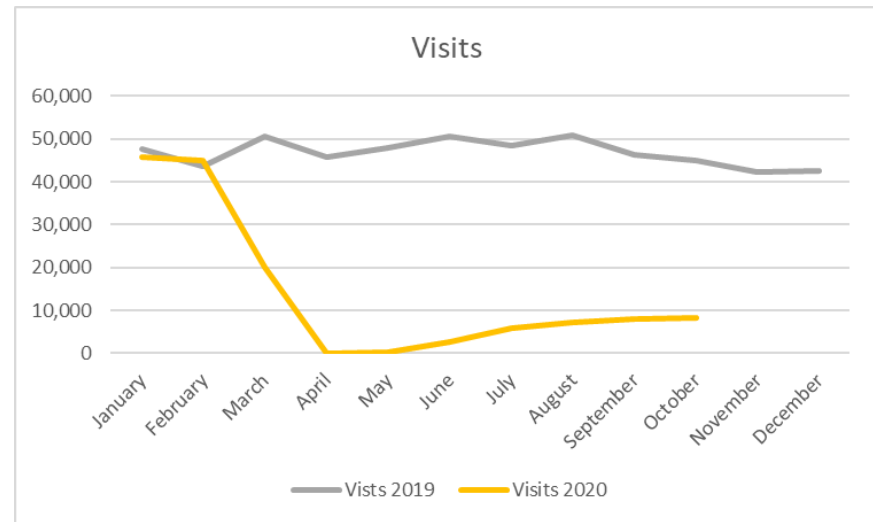
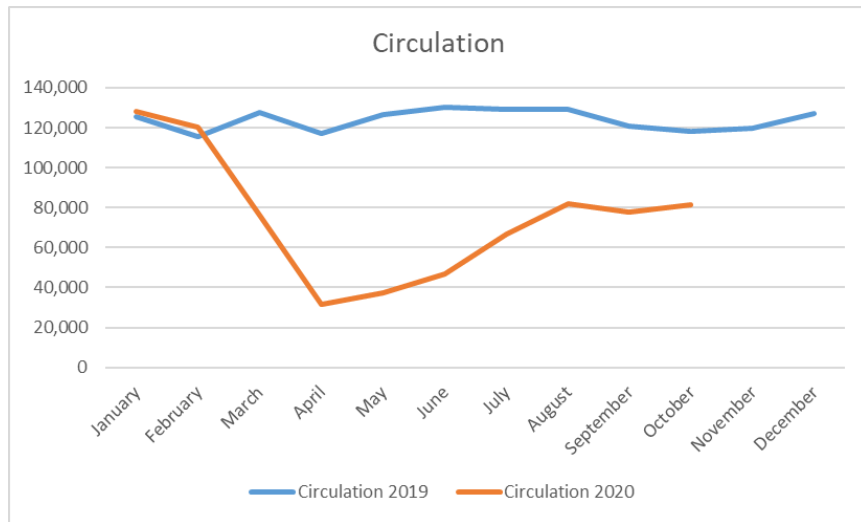
	Patrons Served	Checked Out	Returned
November	5,376	23,845	26,242
October	6,397	27,001	25,983
	-15.9%	-11.7%	+1.0%

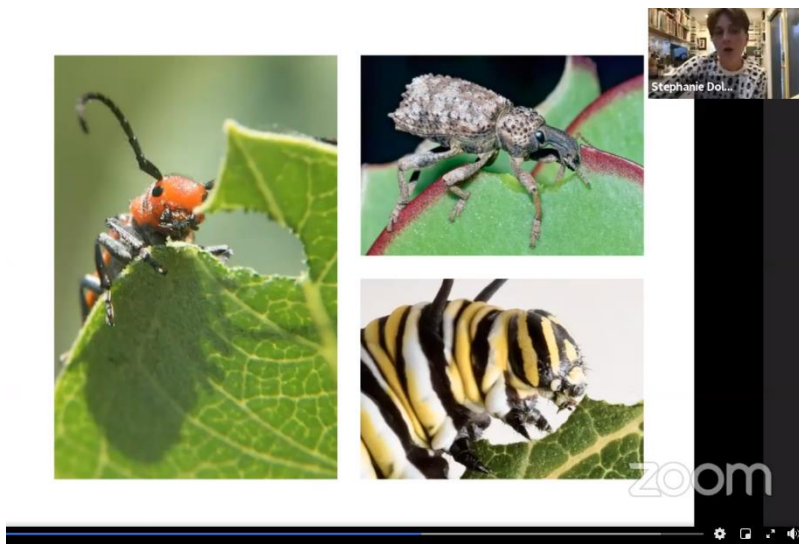
NOVEMBER HIGHLIGHTS

- ❖ 18 live programs hosted or cohosted by Los Altos Library staff with 543 live views
 - 5 Storytimes
 - 4 Virtual Film Discussions
 - 4 ESL Conversation clubs
 - 3 Book Groups
 - Traveling Lanterns – Legends and Myths from Mt. Olympus
 - Beetle Lady – Eat and Be Eaten
- ❖ Auto Renewal of items with no holds starting Dec 1
- ❖ Elimination of late fees starting January 2021
- ❖ 11/30 Suspended computer access service due to new Public Health Order
- ❖ 11/30 Suspended lobby access and returned to curbside pickup due to new Public Health Order

	Circulation 2019	Circulation 2020	Visits 2019	Visits 2020	New Library Card 2019	New Library Card 2020
January	125,724	127,926	47,761	45,680	327	371
February	115,772	120,125	43,632	44,908	292	404
March	127,567	76,117	50,620	20,182	4,410 *	362
April	117,194	31,847	45,728	26	261	403
May	126,753	37,295	47,796	265	270	378
June	130,180	46,656	50,737	2,772	2717	345
July	129,062	66,490	48,411	5,796	374	299
August	129,196	81,848	50,988	7,137	2,522 *	3,456 *
September	120,766	77,969	46,331	8,069	2,919 *	321
October	118,053	81,583	45,098	8,399	247	254
November	119,874		42,379		296	
December	126,930		42,481		248	

*Spike in new library cards from incorporation of student ecards from local schools





Beetle Lady: Eat and Be Eaten

Attendees: 75



Storytime with Jennifer Chang

Attendees: 18



Current Library Entrance Set Up

Moved back to curbside service for no appointment holds pick up because of the constraints of the new Public Health Order issued on 11/28/2020