

FIRST STREET BAKERY

288 1ST STREET
LOS ALTOS, CALIFORNIA 94022

HISTORICAL COMMISSION
REVIEW

14 AUGUST 2012

Bohlin Cywinski Jackson Project No. 12508

PROJECT TEAM

ARCHITECT

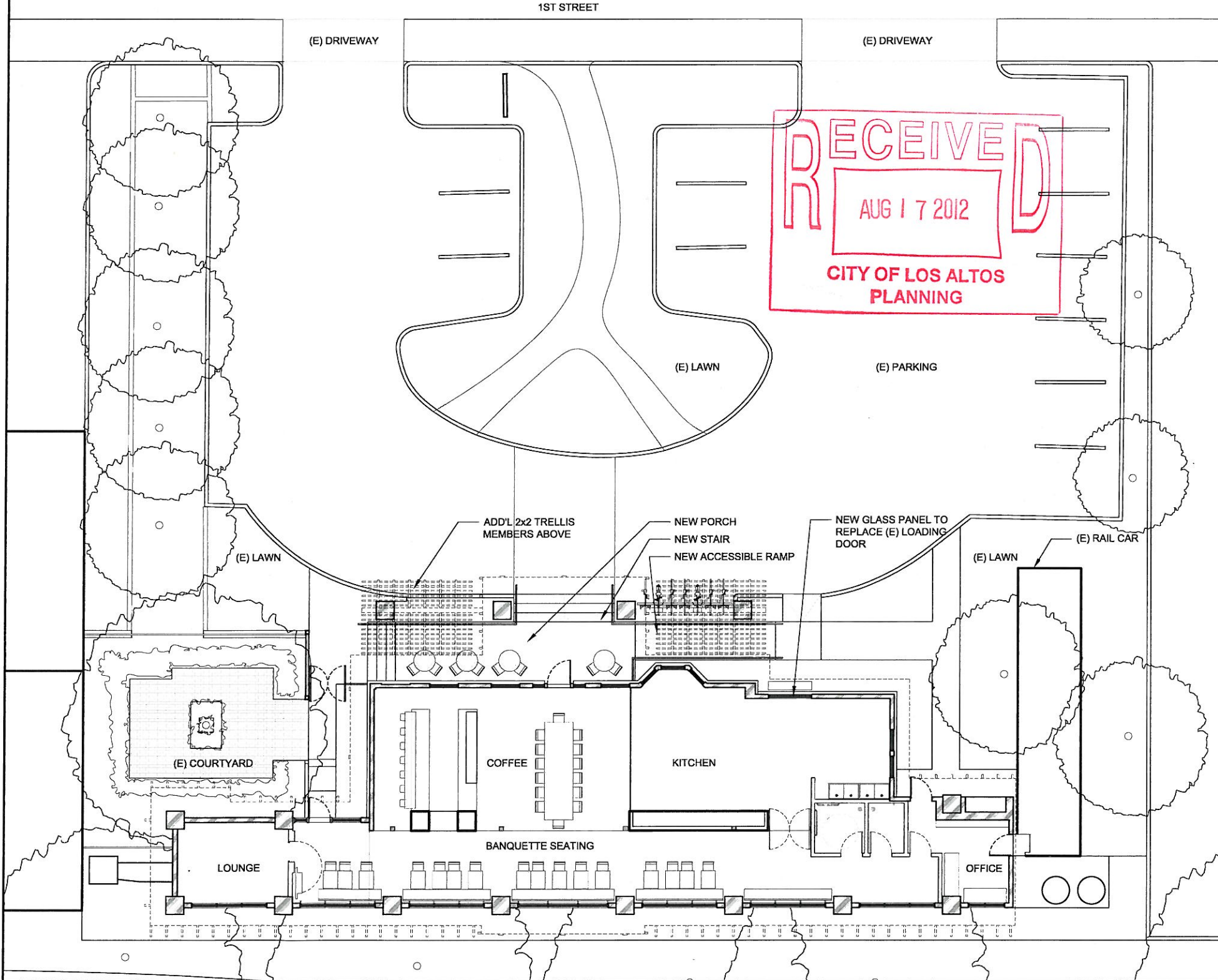
Bohlin Cywinski Jackson
Architecture Planning Interior Design
Wilkes Barre/Pittsburgh/Philadelphia/Seattle/San Francisco
49 Geary Street, Suite 300
San Francisco, CA 94108
T: 415.989.2100

CIVIL ENGINEER

Lea & Braze Engineering, Inc.
Bay Area Region
2495 Industrial Pkwy West
Hayward, CA 94545
T: 510.887.4086

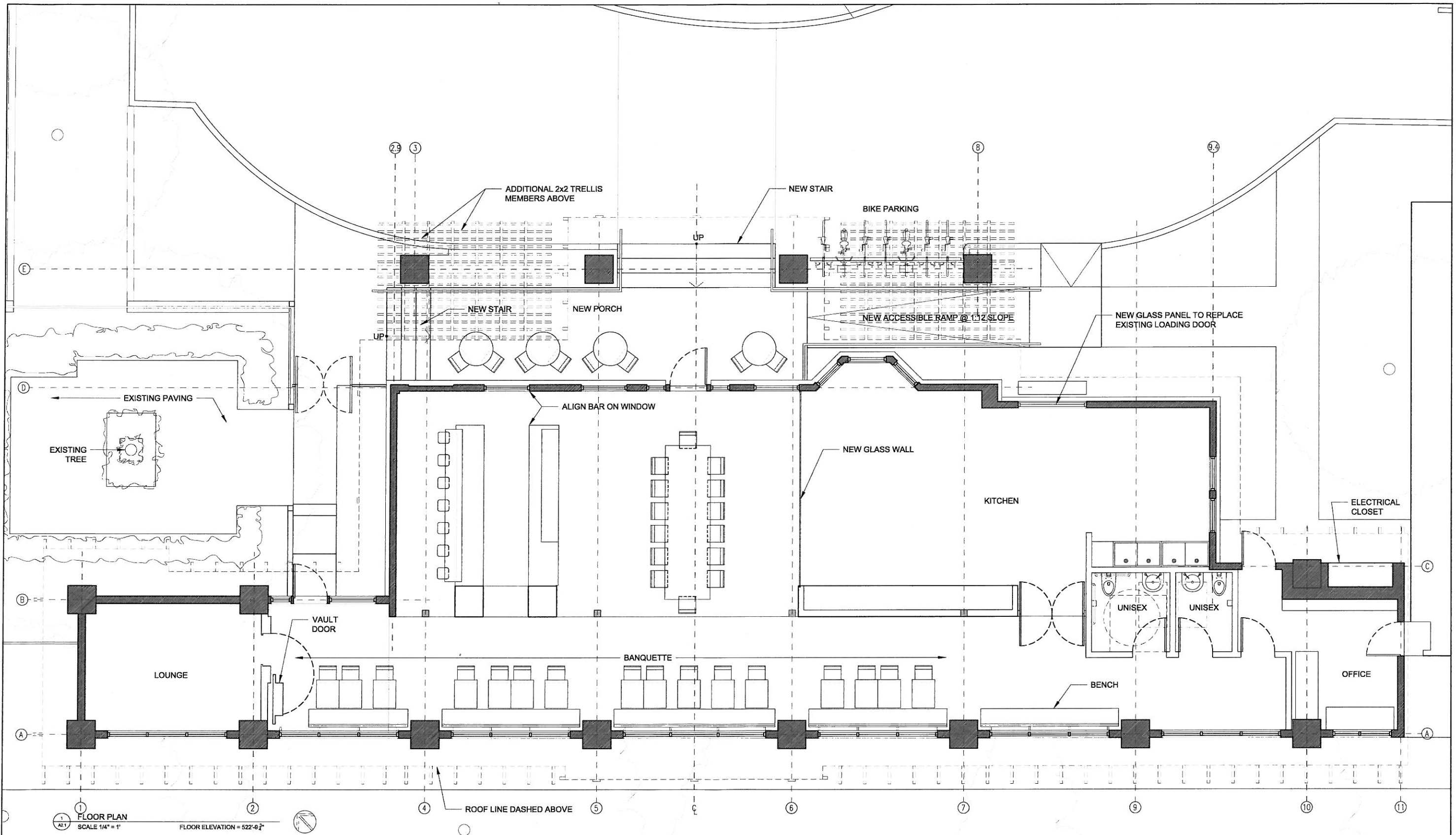


2 LOS ALTOS VICINITY MAP
A15 NTS



1 SITE PLAN
A16 SCALE 1/8" = 1'

FLOOR ELEVATION = 507'-2"



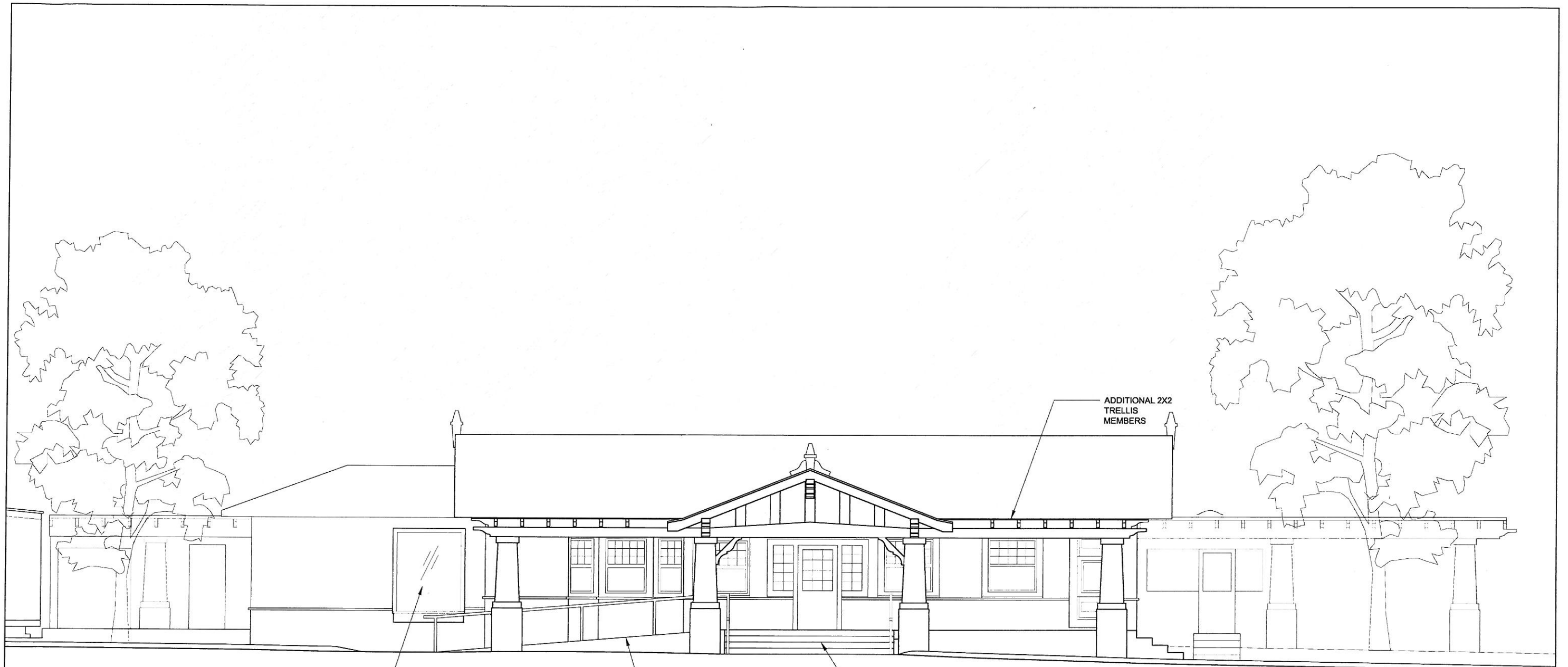
Bohlin Cywinski Jackson
 Architecture Planning Interior Design
 49 Geary St, Suite 300
 San Francisco, CA 94108
 T. 415.589.2100 F. 415.989.2101

Owner
 RieCo
 339 Main St.
 Los Altos, CA 94022
 650.305.0000

Architect
 Bohlin Cywinski Jackson
 49 Geary St, Suite 300
 San Francisco, CA 94108
 415.989.2100

First Street Bakery
 288 First St.
 Los Altos, California
 94022

1/4" = 1'-0"	14 AUGUST 2012
NO	
DR	
DATE	
A2.1	



GLASS WINDOW
AT EXIST LOADING
DOCK OPENING

ADA - CONFORMANT
RAMP

NEW PORCH
+ STAIR

ADDITIONAL 2X2
TRELLIS
MEMBERS

1
A4.0 FRONT ELEVATION - EAST
SCALE 1/4" = 1'

Bohlin Cywinski Jackson
Architecture Planning Interior Design
49 Geary St, Suite 300
San Francisco, CA 94108
T. 415.989.2100 F. 415.989.2101

Owner
RieCo
339 Main St.
Los Altos, CA 94022
650.305.0000

Architect
Bohlin Cywinski Jackson
49 Geary St, Suite 300
San Francisco, CA 94108
415.989.2100

First Street Bakery
288 First St.
Los Altos, California
94022

DATE	14 AUGUST 2012
BY	BO
CHECKED	CM
SCALE	1/4" = 1'
NO.	A4.0