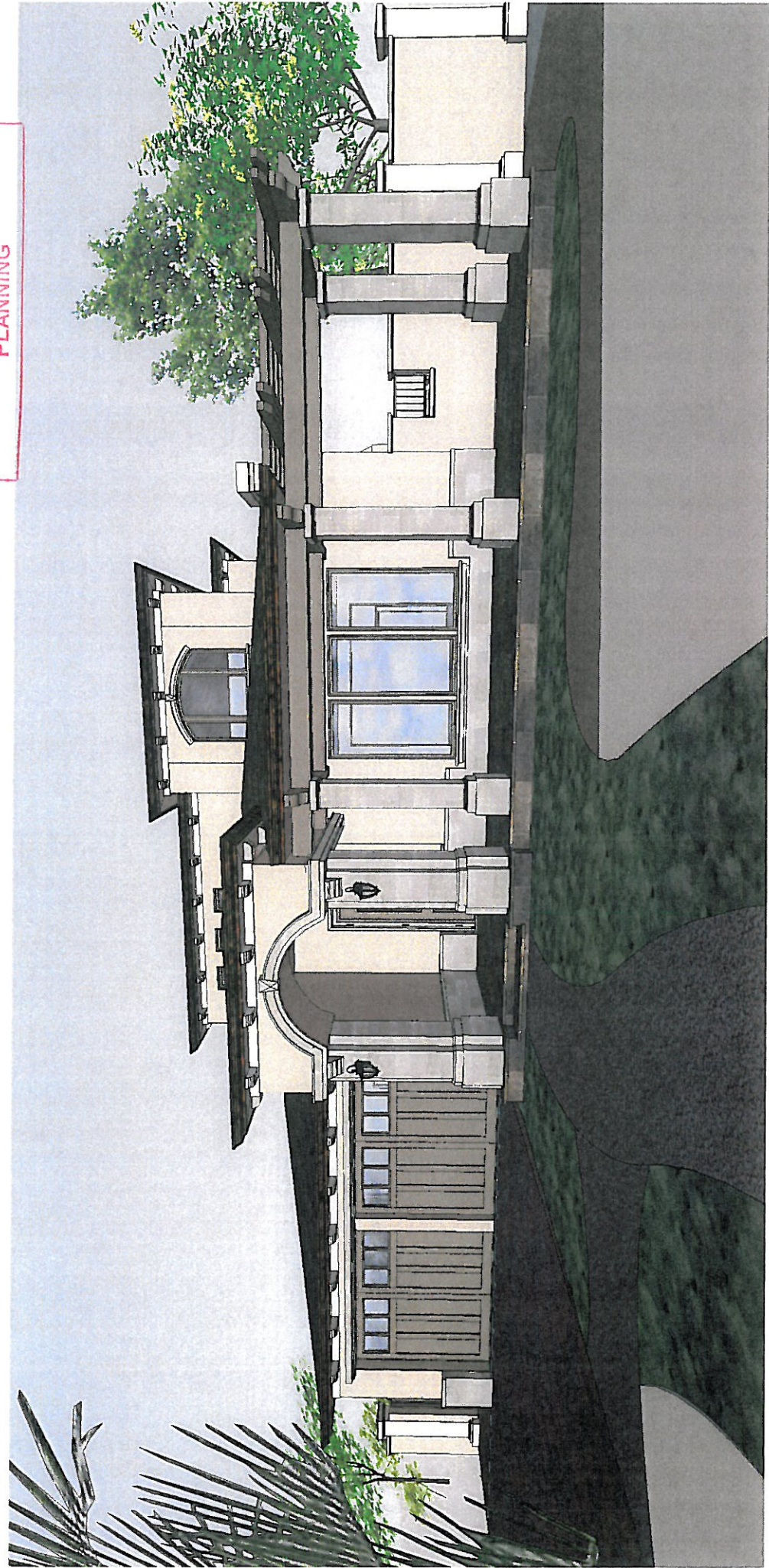


RECEIVED  
JUL 30 2013  
CITY OF LOS ALTOS  
PLANNING



691 BENVENUE AVE. NORTH VIEW



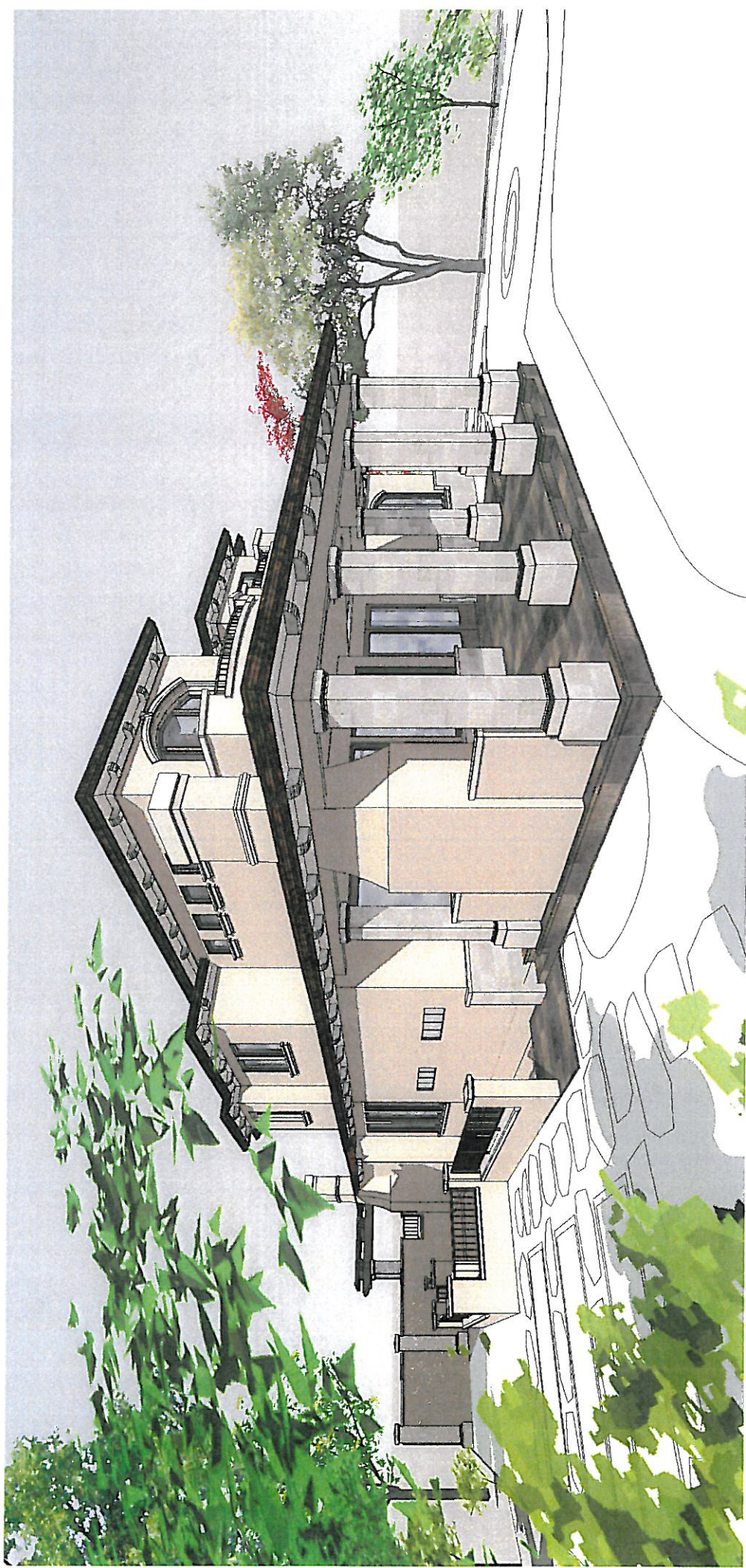
691 BENVENUE AVE. NORTH-EAST VIEW



691 BENVENUE AVE. NORTH - WEST VIEW



691 BENVENUE AVE. SOUTH-EAST VIEW



691 BENVENUE AVE. SOUTH-WEST VIEW

# BENVENUE AVENUE (N) DEVELOPMENT ANALYSIS

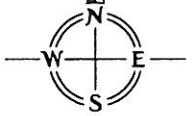
OFFICE OF COUNTY ASSESSOR — SANTA CLARA COUNTY, CALIFORNIA

BOOK 189 PAGE 38

JUL 30 2013

CITY OF LOS ALTOS PLANNING

0.02 AC. S.C.V.W.D.



## LEGEND



PROJECT SITE



PHOTO OF HOUSE TAKEN FOR REVIEW



LOT WITH 2 STORY HOUSE

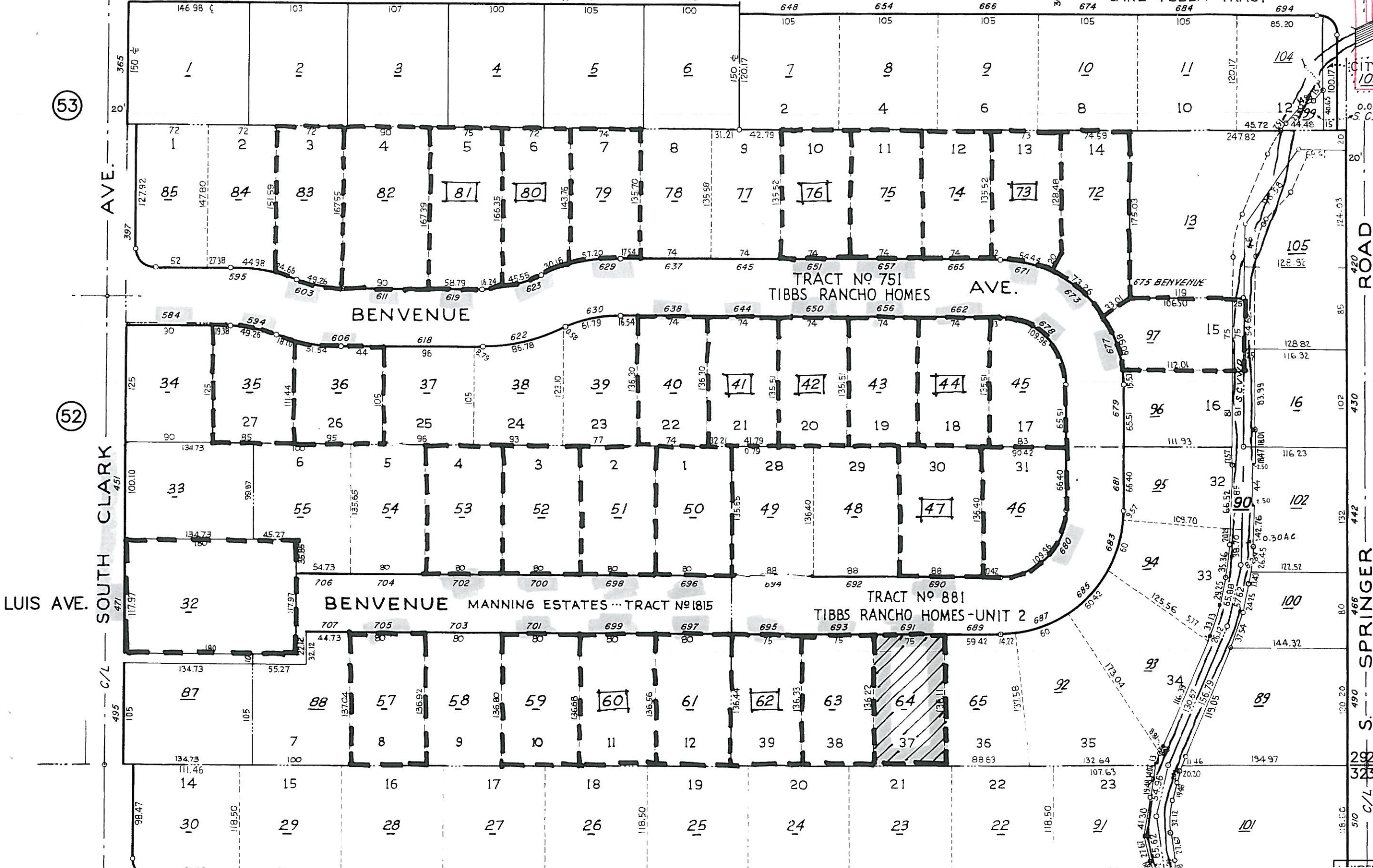
(24)

TRA DET. MAP 073

(37)

R.O.S. 726/11

PORTION OF LOT 9 - SUBD. OF EST. OF G. MADIGAN C/L --- (BAILEY FMLY. --- AVE.) PACO DRIVE TRACT No 229 CARL VELLA TRACT



(53)

(52)

LUIS AVE.

SOUTH CLARK AVE.

ROAD

S. SPRINGER

C/L



STUCCO 2 STORY

# 584



# 584

# 584 / 594



1988

2 STORY / 1 STORY

#584 / 594



1988

#594





CS-11 #603 / #595



CS-11 #603



STUCCO

#603/#611



RAISED ENTRY

#606



CONTEMPORARY

#619



#619



2104#

707-457-0151

#623



2104#

#619/623



2 STORY / 1 STORY 310000 # 623/629



#629



2 STORY STUCCO /STONE

1500 S. 40th St. #650

#650



#650



2 STORY / 1 STORY. STUCCO. FRONT ENTRY

#644



#650



10000 1ST ST. S. W. #638



#657





2 STORY / 1 STORY GARAGE #651/657



2 STORY / 1 STORY GARAGE #651



SIMILAR PROPORTIONS  
MEDITERRANEAN  
2 STORY  
SIMILAR BLOG. MATERIALS

#671



2 STORY / 1 STORY

#671 / 673



#677



MEDITERRANEAN 2 STORY #67A



#678



YONKERS, NEW YORK

#680



2 STORY / 1 STORY

#656



2 STORY - CRAFTSMAN

#662



2 STORY

#662



#690



PROJECT SITE

#691



#693/695



2 STORY #695



#699





2 STORY / 1 STORY

#697



#699



2 STORY / 1 STORY

#701



2 STORY / 1 STORY

#699 / 701





#700



#698/696



# 705





#702



#705



Q3: # CONTEMPORARY

#471 CLARK AVE



REAR ELEVATION  
#471 CLARK AVE (FACES BENVENUE)



#702



#704





#471 CLARK AVE (FRONT ELEVATION,) CONTEMPORARY





#471. CLARK AVE. CONTEMPORARY

