

MAIN STREET
(80' WIDE PUBLIC R/W)

S57°57'00"W 350.08'(350')(R1) BASIS OF BEARINGS
(N57°56'15"E 350.115')(R4) (350.12')(R5)(R6)

FND MON IN WELL (R5)(R6)

FND MON IN WELL

THIRD STREET
(50' WIDE PUBLIC R/W)

SECOND STREET
(50' WIDE PUBLIC R/W)

S32°02'40"E 670.118' (N32°02'00"W)(R3) (670.10')(R1) (670.16')(R3)
S32°02'40"E 1347.18' (1)

FIRST STREET
(50' WIDE PUBLIC R/W)

FIRST STREET
(50' WIDE PUBLIC R/W)

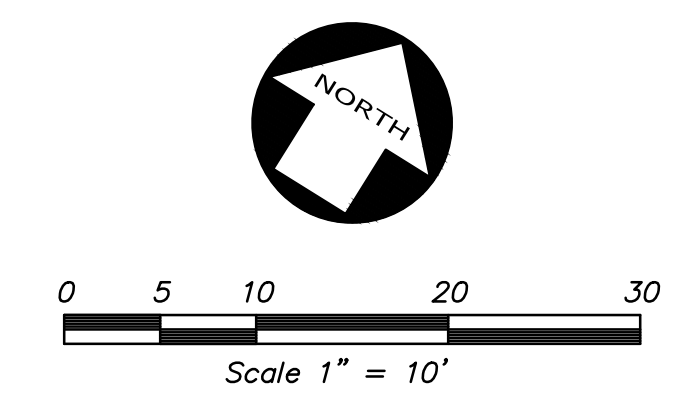
LEGEND

Table with 2 columns: Symbol and Description. Includes Building Line, Centerline, Concrete Block Wall, Concrete Curb, Concrete Curb & Gutter, Driveway, Easement Line, Edge of Pavement, Electric Line, Fence Line, Fire Service Line, Gas Line-Valve & Meter, Lot Line, Monument/Monument Line, Overhead Power Line, Property Line, Sanitary Sewer Line-Manhole, Sidewalk, Spot Elevation, Telephone Line, Cable Television Line, Water Line & Valve, Area Drain, Electroliner, Fire Hydrant, Gas Meter, QTY Anchor, Hose Bibb, Mail Box, Power Pole/Joint Pole, Traffic Sign, Tree, Utility Line Marker, Walk-Bollard Light, Water Valve.

ABBREVIATIONS

Table with 2 columns: Abbreviation and Full Name. Includes AC (Asbestos Cement), BW (Back of Walk), CB (Catch Basin), CIP (Cast Iron Pipe), CTV (Cable Television), CTVB (Cable Television Box), DI (Drop Inlet), EB (East), EB (Electric Box), EP (Edge of Pavement), EW (Edge of Walk), FC (Face of Curb), FF (Finish Floor), FND (Found), GA (Gly Anchor), IE (Invert Elevation), MH (Manhole), MN (Monument), N (North), NO (Number), RE (Rim Elevation), S (South), SLB (Street Light Box), SSMH (Sanitary Sewer Manhole), TB (Telephone Box), TC (Top of Curb), W (West), W/ (With), WB (Water Box), WM (Water Meter).

MAP REFERENCES table with 2 columns: Reference and Description. Includes (R1) - 1" M 99, (R2) - 358 M 17, (R3) - 654 M 3, (R4) - 695 M 7, (R5) - CORNER RECORD 1597, (R6) - CORNER RECORD 1764, (R7) - CORNER RECORD 2037.

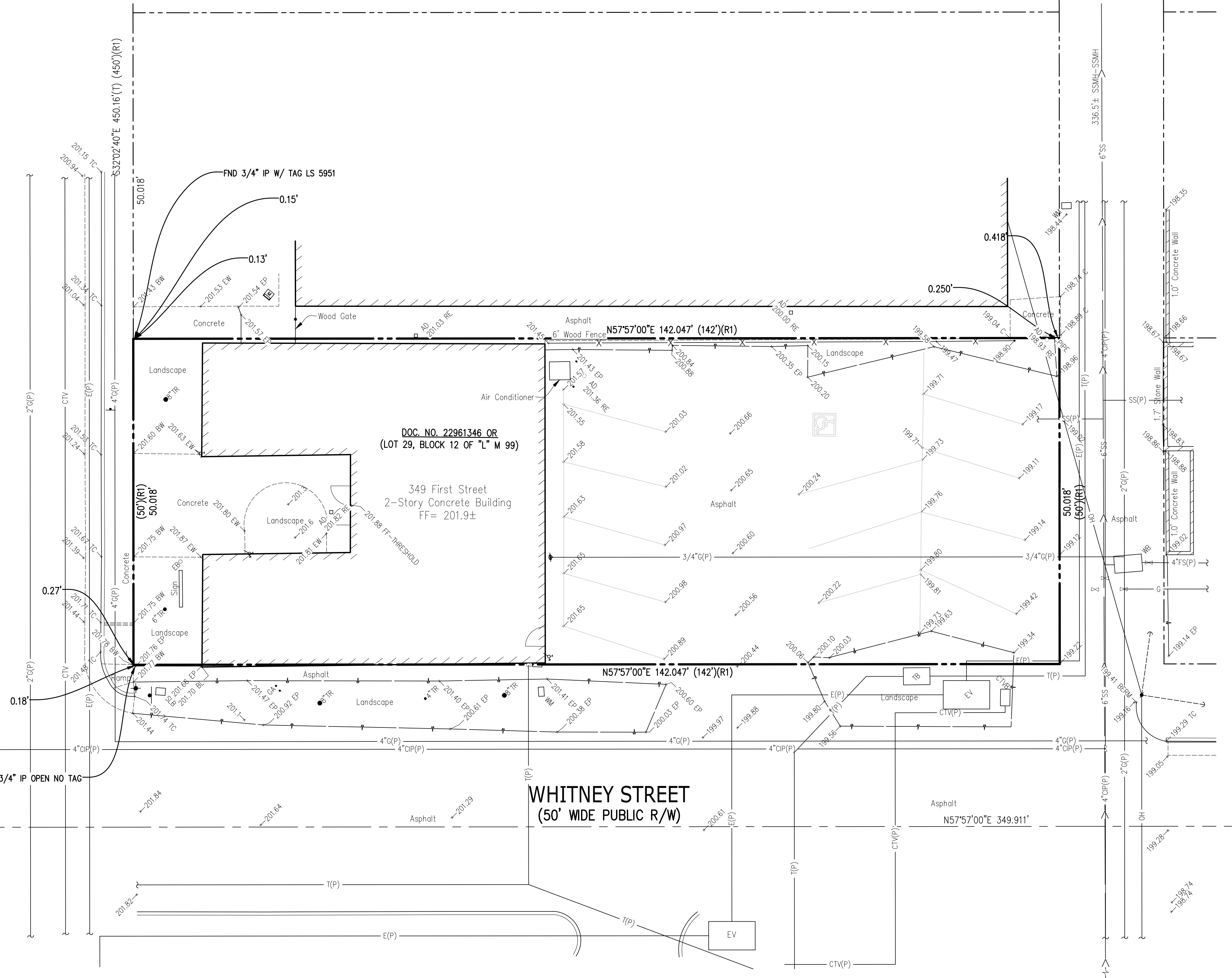


NOTES

- 1. THE BOUNDARY SHOWN HEREON IS BASED SOLELY UPON THE FOLLOWING INFORMATION: MAP NO. 1 OF THE TOWN OF LOS ALTOS, FILED FOR RECORD IN OCTOBER, 1907 IN BOOK "L" OF MAPS, PAGE 99; PARCEL MAP FILED FOR RECORD JUNE 27, 1975 IN BOOK 358 OF MAPS, PAGE 17; PARCEL MAP FILED FOR RECORD FEBRUARY 18, 1993 IN BOOK 654 OF MAPS, PAGE 3; RECORD OF SURVEY FILED FOR RECORD OCTOBER 10, 1997 IN BOOK 695 OF MAPS, PAGE 7; CORNER RECORD DOC. NO. 1597, SANTA CLARA RECORDS; CORNER RECORD DOC. NO. 1764, SANTA CLARA RECORDS; CORNER RECORD DOC. NO. 2037, SANTA CLARA RECORDS; GRANT DEED DOC. NO. 22961346, SANTA CLARA RECORDS. EASEMENTS AND OTHER ENCUMBRANCES, IF ANY, ARE NOT SHOWN.
2. ALL DISTANCES AND ELEVATIONS SHOWN HEREON ARE IN FEET AND DECIMALS THEREOF.
3. THE TYPES, LOCATIONS, SIZES AND/OR DEPTHS OF EXISTING UNDERGROUND UTILITIES AS SHOWN ON THIS TOPOGRAPHIC SURVEY WERE OBTAINED FROM SOURCES OF VARYING RELIABILITY. THE CONTRACTOR IS CAUTIONED THAT ONLY ACTUAL EXCAVATION WILL REVEAL THE TYPES, EXTENT, SIZES, LOCATIONS AND DEPTHS OF SUCH UNDERGROUND UTILITIES. (A REASONABLE EFFORT HAS BEEN MADE TO LOCATE AND DELINEATE ALL KNOWN UNDERGROUND UTILITIES); HOWEVER, THE ENGINEER CAN ASSUME NO RESPONSIBILITY FOR THE COMPLETENESS OR ACCURACY OF ITS DELINEATION OF SUCH UNDERGROUND UTILITIES WHICH MAY BE ENCOUNTERED, BUT WHICH ARE NOT SHOWN ON THESE DRAWINGS.
PHYSICAL ITEMS SHOWN ON THIS SURVEY ARE LIMITED TO THOSE ITEMS VISIBLE AS OF THE DATE OF THIS SURVEY. SUBSURFACE STRUCTURES, IF ANY, ARE NOT SHOWN. SAID SUBSURFACE OBSTACLES MAY INCLUDE, BUT ARE NOT LIMITED TO, CONCRETE FOOTINGS, SLABS, SHORING, STRUCTURAL PILES, UTILITY VAULTS, PIPING, UNDERGROUND TANKS, AND ANY OTHER SUBSURFACE STRUCTURES NOT REVEALED BY A SURFACE INSPECTION.
4. THE SUBJECT PROPERTY IS SHOWN ON THE FEDERAL EMERGENCY MANAGEMENT AGENCY (FEMA) FLOOD INSURANCE RATE MAP (FIRM) FOR SANTA CLARA COUNTY, CALIFORNIA, MAP NUMBER 06085C0038H FOR COMMUNITY NUMBER 060341 (CITY OF LOS ALTOS), WITH AN EFFECTIVE DATE OF MAY 18, 2009, AS BEING LOCATED IN FLOOD ZONE "X (SHADED)".
ACCORDING TO FEMA THE DEFINITION OF ZONE "X (SHADED)" IS: AREAS OF 0.2% ANNUAL CHANCE FLOOD; AREAS OF 1% ANNUAL CHANCE FLOOD WITH AVERAGE DEPTHS OF LESS THAN 1 FOOT OR WITH DRAINAGE AREAS LESS THAN 1 SQUARE MILE; AND AREAS OF PROTECTED LEVEES FROM 1% ANNUAL CHANCE FLOOD.
FEMA BASE FLOOD ELEVATIONS ARE BASED ON NAVD88 DATUM.
5. BENCHMARK: CITY OF LOS ALTOS BM 18: TOP OF CURB @ SW RETURN OF MAIN ST & FIRST ST BETWEEN NORTH EDGE HC RAMP AND CB. ELEVATION: 197.450 (NAVD88 DATUM)
6. BASIS OF BEARINGS: THE BEARING OF SOUTH 57° 57' 00" WEST TAKEN ON THE CENTER LINE OF MAIN STREET AS SHOWN ON THAT CERTAIN MAP FILED FOR RECORD IN OCTOBER, 1907, IN BOOK "L" OF MAPS AT PAGE 99, OFFICIAL RECORDS OF SANTA CLARA COUNTY WAS TAKEN AS THE BASIS FOR ALL BEARINGS SHOWN HEREON.
7. CORNER RECORD NOTE: THE DEVELOPER AND/OR CONTRACTOR SHALL BE RESPONSIBLE FOR THE PREPARATION AND FILING OF PRE-CONSTRUCTION AND POST-CONSTRUCTION CORNER RECORDS FOR ANY MONUMENTS OR PROPERTY CORNERS SHOWN HEREON THAT MAY BE DESTROYED DURING IMPROVEMENTS TO THE SUBJECT PROPERTY AS DEFINED IN SECTION 877(B) OF THE PROFESSIONAL LAND SURVEYORS ACT.

Handwritten signature of Rodney A. Stewart II.

PREPARED BY OR UNDER THE SUPERVISION OF DATE
RODNEY A. STEWART II P.L.S. 9225 07/19/2021



Z:\2021\A21082\DWG\SURVEY\TOPO\TS-A21082.dwg 7-19-21 03:24:37 PM wrodguz

Project information and title block. Includes: TOPOGRAPHIC SURVEY OF 349 FIRST STREET FOR OCTANE FIRST STREET, LLC; KIER+WRIGHT logo; Surveyor information: RODNEY A. STEWART II, P.L.S. 9225; Date: JULY, 2021; Scale: 1" = 10'; Surveyor: RS2; Drawn by: TC; Job No.: A21092; Sheet: 1 of 1 SHEETS; Location: LOS ALTOS, CALIFORNIA.