



VIEW 1
ALONG MARICH WAY



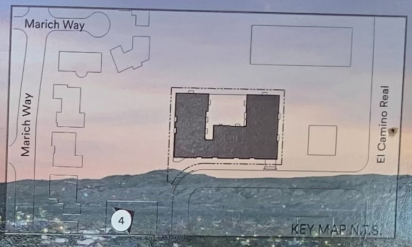


VIEW 2
DISTEL CIRCLE STREETSCAPE

EAH HOUSING
kitley
JETT
BKF







VIEW 4
DISTEL CIRCLE AERIAL VIEW





NOTICE OF DEVELOPMENT PROPOSAL: 330 DISTEL CIRCLE

PROJECT DESCRIPTION:

The proposed building is 5 stories with a stepdown in the building to 4 levels at the western corner of the site. The building is 100% affordable with 90 units and 90 parking stalls.

Key sustainable features include: mass timber at the ground level, solar shading, water efficient landscape, and the potential for solar photovoltaics.

APPLICANT:

Welton Jordan, Chief Real Estate Development Officer
415-295-8876
welton.jordan@eahhousing.org

OWNER:

Allen Ishibashi, Sr. Real Property Agent
650-625-6546
aishibashi@openspace.org

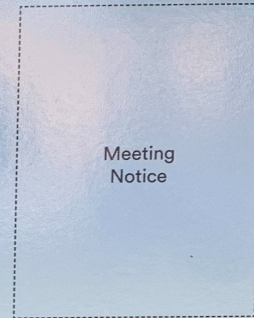
PROJECT PLANNER:

Radha Hayagreev, Senior Consulting Planner / Urban Designer
rhayagreev@losaltosca.gov

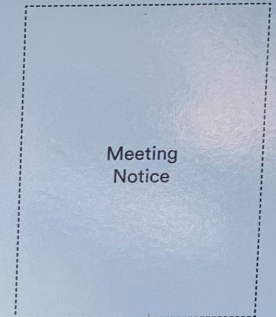
WE WOULD LIKE TO HEAR FROM YOU!

WEBPAGE: www.eahhousing.org/330distelcircle

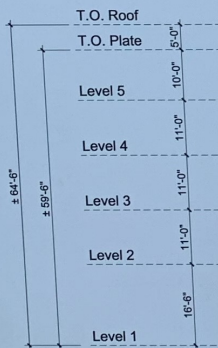
EMAIL: 330distelcircle@eahhousing.org



Meeting
Notice



Meeting
Notice



SCALE: 0 4 8 12



DISTEL CIRCLE ELEVATION



EAH HOUSING
Elder Assisted Housing

ktgy

JETT
Landscape Architecture + Design

BKF



VIEW 3
DISTEL CIRCLE BUILDING ENTRY