



FIRST PLACE VILLAGE

LOS ALTOS, CA



PROJECT DATA SUMMARY

ADDRESS: 385-387-389 FIRST STREET
LOS ALTOS, CA 94022

ZONING: CD/R3 COMMERCIAL DOWNTOWN
/ MULTIPLE FAMILY DISTRICT

SITE AREA: 9,771 S.F. (.224 ACRES)

EXISTING BUILDING AREA: 3,163 SF

PROPOSED USE

PROPOSED COMMERCIAL OFFICE: 2,099 SF
PROPOSED RESIDENTIAL UNITS: 10 UNITS

UNIT SUMMARY

(8) 2 - BEDROOM UNITS
(2) 3 - BEDROOM UNITS

PROJECT AREA SUMMARY

BASEMENT FLOOR:	5,706 SF
FIRST FLOOR:	5,777 SF
SECOND FLOOR:	7,347 SF
THIRD FLOOR:	7,043 SF
STAIR/ ELEV. TOWER	312 SF
TOTAL:	26,185 SF



FRONT ELEVATION



FRONT ELEVATION



LEFT ELEVATION



LEFT ELEVATION



LEFT ELEVATION



REAR ELEVATION



REAR ELEVATION



VIEW FROM LYELL STREET & SECOND STREET



VIEW FROM LYELL STREET & SECOND STREET



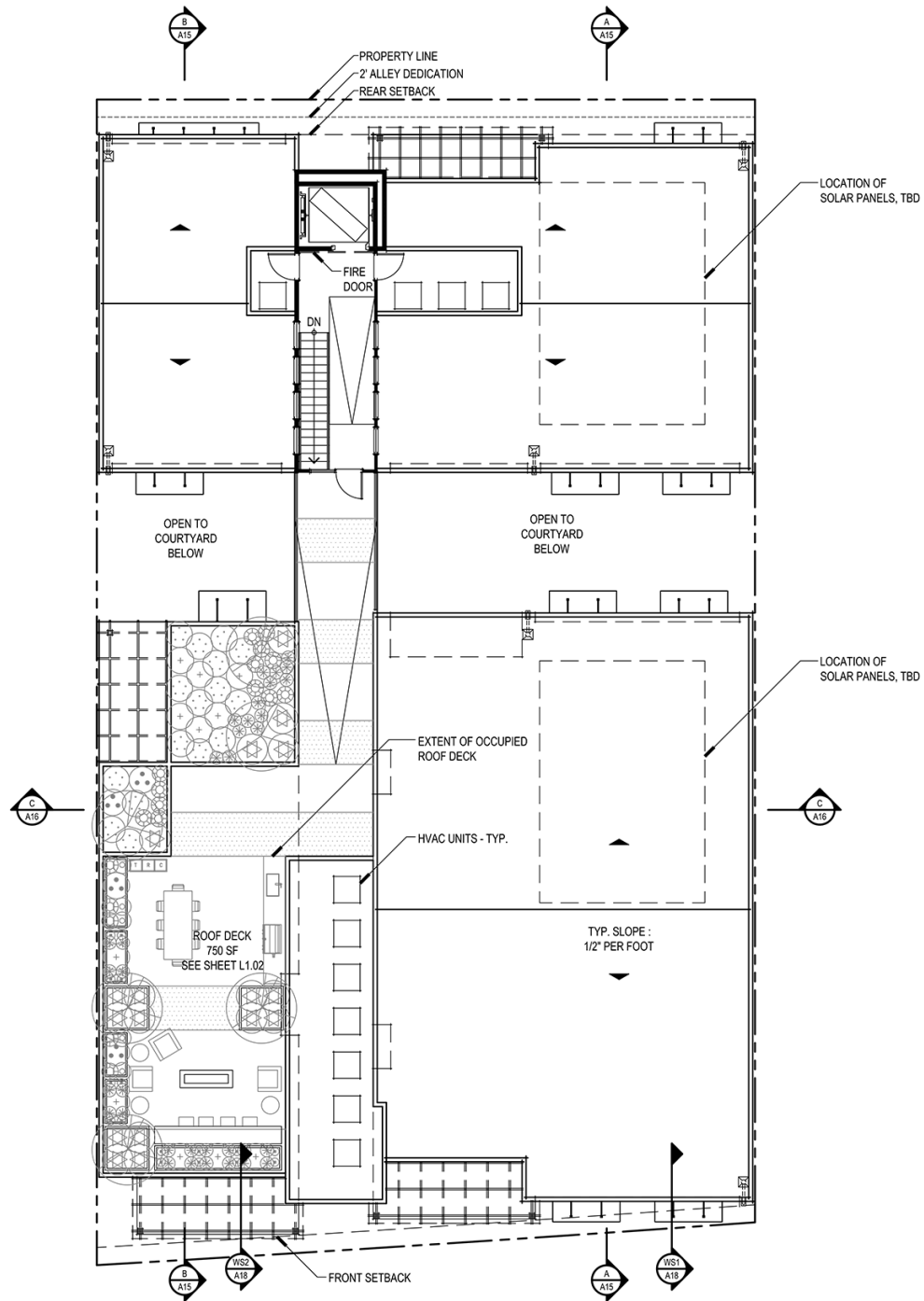
VIEW FROM SECOND STREET & LYELL STREET



VIEW FROM SECOND STREET & LYELL STREET



VIEW FROM SECOND STREET & LYELL STREET



ROOF PLAN







THANK YOU





WORKSHOP SUBMITTAL



PEER REVIEW SUBMITTAL



FIRST PC SUBMITTAL



SECOND PC SUBMITTAL



SECOND PC SUBMITTAL (ALTERNATE)