



**STUDY SESSION**

**Agenda Item # 7**

**AGENDA REPORT SUMMARY**

**Meeting Date:** December 11, 2018

**Subject:** CASA Proposal – The Committee to House the Bay Area

**Prepared by:** Chris Jordan, City Manager

**Attachment(s):**

1. CASA Technical Committee December 3, 2018 Meeting Agenda Packet

**Initiated by:**

Council Members

**Previous Council Consideration:**

Not Applicable

**Fiscal Impact:**

Not Applicable

**Environmental Review:**

Not Applicable

**Policy Question(s) for Council Consideration:**

None at this time -- this is a discussion item.

**Summary:**

- Council Members have requested an opportunity to discuss the proposal and provide direction
- The Council should discuss any action they believe the City should take in response to this proposal

**Staff Recommendation:**

Discuss the elements of the CASA Housing Compact and provide direction to staff as needed



375 Beale Street  
Suite 800  
San Francisco, California

## Meeting Agenda

### CASA Technical Committee

#### CASA Co-Chairs

*Fred Blackwell, CEO, The San Francisco Foundation*  
*Leslye Corsiglia, Executive Director, Silicon Valley at Home*  
*Michael Covarrubias, CEO, TMG Partners*

---

Monday, December 3, 2018

1:00 PM

Boardroom - 1st Floor

---

#### Committee to House the Bay Area

The meeting will be webcast at <http://mtc.ca.gov/whats-happening/meetings>  
For information on CASA meetings, contact Wally Charles at (415) 820-7993.  
For information on CASA process, visit <http://mtc.ca.gov/CASA>

#### I. Welcome and Updates

*Fred Blackwell, CEO, The San Francisco Foundation*  
*Leslye Corsiglia, Executive Director, Silicon Valley at Home*  
*Michael Covarrubias, CEO, TMG Partners*  
*Steve Heminger, Executive Director, MTC*

#### II. Public Comment

*Ken Kirkey, Planning Director, MTC / ABAG*

#### III. Draft CASA Compact - Overview

[18-1067](#)

Draft CASA Compact

**Presenter:**

Steve Heminger, Executive Director, MTC / ABAG

**Attachments:**

[03 CASA Compact 113018.pdf](#)

#### IV. Review Racial Equity Analysis

[18-1071](#)

Review Racial Equity Analysis

**Presenter:**

Vikrant Sood

**Attachments:**

[04 Racial Equity Analysis 113018.pdf](#)

#### V. Next Step / Close

**Public Comment:** The public is encouraged to comment on agenda items at Committee meetings by completing a request-to-speak card (available from staff) and passing it to the Committee secretary. Public comment may be limited by any of the procedures set forth in Section 3.09 of MTC's Procedures Manual (Resolution No. 1058, Revised) if, in the chair's judgment, it is necessary to maintain the orderly flow of business.

**Meeting Conduct:** If this meeting is willfully interrupted or disrupted by one or more persons rendering orderly conduct of the meeting unfeasible, the Chair may order the removal of individuals who are willfully disrupting the meeting. Such individuals may be arrested. If order cannot be restored by such removal, the members of the Committee may direct that the meeting room be cleared (except for representatives of the press or other news media not participating in the disturbance), and the session may continue.

**Record of Meeting:** Committee meetings are recorded. Copies of recordings are available at a nominal charge, or recordings may be listened to at MTC offices by appointment. Audiocasts are maintained on MTC's Web site ([mtc.ca.gov](http://mtc.ca.gov)) for public review for at least one year.

**Accessibility and Title VI:** MTC provides services/accommodations upon request to persons with disabilities and individuals who are limited-English proficient who wish to address Commission matters. For accommodations or translations assistance, please call 415.778.6757 or 415.778.6769 for TDD/TTY. We require three working days' notice to accommodate your request.

**可及性和法令第六章:** MTC 根據要求向希望來委員會討論有關事宜的殘疾人士及英語有限者提供服務/方便。需要便利設施或翻譯協助者，請致電 415.778.6757 或 415.778.6769 TDD / TTY。我們要求您在三個工作日前告知，以滿足您的要求。

**Acceso y el Titulo VI:** La MTC puede proveer asistencia/facilitar la comunicación a las personas discapacitadas y los individuos con conocimiento limitado del inglés quienes quieran dirigirse a la Comisión. Para solicitar asistencia, por favor llame al número 415.778.6757 o al 415.778.6769 para TDD/TTY. Requerimos que solicite asistencia con tres días hábiles de anticipación para poderle proveer asistencia.

---

Attachments are sent to Committee members, key staff and others as appropriate. Copies will be available at the meeting.

All items on the agenda are subject to action and/or change by the Committee. Actions recommended by staff are subject to change by the Committee.

## Legislation Details (With Text)

---

**File #:** 18-1067      **Version:** 1      **Name:**

**Type:** Report      **Status:** Informational

**File created:** 11/29/2018      **In control:** CASA Technical Committee

**On agenda:** 12/3/2018      **Final action:**

**Title:** Draft CASA Compact

**Sponsors:**

**Indexes:**

**Code sections:**

**Attachments:** [03\\_CASA Compact 113018.pdf](#)

Date	Ver.	Action By	Action	Result
------	------	-----------	--------	--------

**Subject:**  
Draft CASA Compact

**Presenter:**  
Steve Heminger, Executive Director, MTC / ABAG

**Attachments:**



# CASA COMPACT

A 15-Year Emergency Policy Package to Confront the Housing Crisis in the San Francisco Bay Area

December 2018



**CASA**

The Committee to  
House the Bay Area



# Contents

<b>CASA Preamble</b> .....	<b>3</b>
<b>Introduction</b> .....	<b>5</b>
<b>Tenant Protections</b>	
Compact Element #1: Just Cause Eviction Policy .....	7
Compact Element #2: Emergency Rental Assistance and Rent Cap .....	9
Compact Element #3: Emergency Rent Assistance and Access to Legal Counsel.....	11
<b>Housing Inclusion and Capacity</b>	
Compact Element #4: Remove Regulatory Barriers to ADUs .....	13
Compact Element #5: Minimum Zoning near Transit.....	15
Compact Element #6: Good Government Reforms to Housing Approval Process .....	17
<b>Approval Process and Timeline</b>	
Compact Element #7: Expedited Approvals and Financial Incentives for Select Housing .....	19
Compact Element #8: Unlock Public Land for Affordable Housing .....	21
<b>Funding and Coordination</b>	
Compact Element #9: Funding and Financing the CASA Compact.....	23
Compact Element #10: Regional Housing Enterprise .....	25
<b>Calls for Action</b>	
Call for Action: Redevelopment 2.0.....	27
Call for Action: Lower the Voter Threshold for Housing Funding Measures.....	27
Call for Action: Proposition 13 Fiscal Reforms Fiscalization of Land Use.....	27
Call for Action: Homelessness .....	28
Call for Action: Grow and Stabilize the Construction Labor Force.....	28
<b>Local Best Practices</b>	
<b>Appendices</b>	

# CASA Preamble

The Bay Area faces many pressing regional problems — traffic congestion, air pollution, the threat of earthquakes and other natural disasters, to name a few. But the housing shortage has reached crisis proportions. During our remarkable run of economic expansion since the Great Recession ended in 2010, the Bay Area has added 722,000 jobs but constructed only 106,000 housing units. With housing supply and demand that far out of whack, prices have shot through the roof and long-time residents as well as newcomers are suffering the consequences.

In one of the wealthiest metropolitan areas on the planet, hundreds of thousands of our fellow citizens are ill-housed or not even housed at all. Many more families are just one missed paycheck away from eviction. While the recent wildfires have underscored the devastating effects of suddenly losing a home, the reality is that too many Bay Area residents face that situation every day.

Our housing crisis is also a transportation crisis. Nearly 190,000 workers commute from outside the nine-county Bay Area to the business parks of Silicon Valley and the Tri-Valley, and more than 220,000 East Bay residents cross the toll bridges to the Peninsula every day. Driven by the search for reasonably-priced housing, these “super-commuters” are clogging the roads and transit systems that we all rely on.

The Bay Area faces a housing crisis because we have failed at three tasks: (1) we have failed to produce enough housing for residents at all income levels; (2) we have failed to preserve the affordable housing that already exists; and (3) we have failed to protect current residents from displacement where neighborhoods are changing rapidly.

These 3 P’s — Production, Preservation, and Protection — are not only the signposts of our collective failure, but they should be the focus of our future efforts to overcome the crisis we have created.

What is CASA? Of course, it is the Spanish word for “house”. It is also the name of a blue-ribbon task force of elected and civic leaders convened by the Association of Bay Area Governments (ABAG) and Metropolitan Transportation



*“The Bay Area is in a state of great peril today; CASA is the best chance to fix this crisis.”*

FRED BLACKWELL

Commission (MTC). Its three Co-Chairs are Fred Blackwell of the San Francisco Foundation, Leslye Corsiglia of Silicon Valley @ Home and Michael Covarrubias of TMG Partners. The CASA Compact is a 15-year emergency policy package to confront the region’s housing crisis head-on. It includes a series of policy reforms that will allow the Bay Area to build more housing at all income levels while protecting tenants and low-income communities from unjust evictions and displacement.

The Compact also includes a series of revenue recommendations needed to, preserve our existing housing stock, subsidize the construction of more affordable housing, and provide assistance to tenants facing eviction.

Finally, the CASA coalition proposes to create a new Regional Housing Enterprise to provide technical assistance to local governments, collect data to monitor our progress, and administer any new regional funds that might be approved. The new enterprise will not have direct land use authority. These three R’s — Reform, Revenue, and Regionalism — form the crux of the CASA Compact.

Animating our work has been a deep concern about how we grow housing in a more inclusive manner in all neighborhoods and not accelerate displacement in the most vulnerable communities. The Bay Area’s segregated housing patterns — both by race and by income — are a legacy of decades of discriminatory government policies and private sector lending practices. The CASA Compact contains specific protections for neighborhoods and residents most affected by that horrible history. And while the Compact was not designed to deal directly with all aspects of the region’s chronic homelessness problem, many of its elements should result in more and better options to shelter this particularly vulnerable segment of the Bay Area’s population.

When Bay Area residents are polled about who is responsible for the region’s housing crisis, they spread the blame far and wide: it’s the businesses who create all the jobs, it’s the developers who build the luxury housing, it’s local government officials who oppose new housing developments, it’s environmental and labor interests whose demands make new housing more expensive, it’s community



*“Our goal is to reach consensus on big picture responses that will move the needle on housing affordability in this region.”*

LESLYE CORSIGLIA

groups who fear the changes that new development will bring.

All those interests (and more) came together around the CASA table for the past 18 months. They worked in the spirit of finding common ground, working through entrenched differences and charting a course forward for the good of the region. The resulting Compact represents an interlocking series of agreements among the negotiating parties. Each signatory to the Compact pledges to support the entire agreement and all of its provisions.

The signatories to the CASA Compact further pledge that their work will not stop when they put down their ceremonial pens. The real work will have just begun.

Implementation of the CASA Compact will require bills to be passed in Sacramento, it will require leadership from our new governor Gavin Newsom, it will require regional ballot measure campaigns in 2020



*"We must compromise, break down silos, and set aside differences for the greater good of the Bay Area."*

MICHAEL COVARRUBIAS

and the years beyond, it will require changes in transportation and housing policy-making at both ABAG and MTC, and it will require every local government in the Bay Area to do their part.

It is a commonplace to say problems that have been decades in the making can't be solved overnight. But we can't afford to take our time in confronting the Bay Area's housing crisis. We need to make significant progress in the next 3-5 years. The CASA Compact is detailed, comprehensive, and actionable. Yet, the region's housing challenge really boils down to a simple, quite personal question: shouldn't our region be able to grow and prosper while also ensuring that our kids and grandkids can live as adults in the neighborhoods where they grew up?

*We say the answer is yes.*



*CASA is about what kind of place our kids and grandkids will live in.*



## Introduction

### About CASA

The recommendations in this Compact are the result of an intensive dialogue among the key interests who are collectively responsible for housing the Bay Area. Over the course of 18 months, the Metropolitan Transportation Commission (MTC) and the Association of Bay Area Governments (ABAG) convened a series of structured discussions with local government officials, developers, major employers, labor interests, housing and policy experts, social equity advocates and non-profit housing providers. The goal was straightforward but by no means simple: find common ground on a comprehensive set of solutions to the Bay Area's housing crisis.

CASA was led by three Co-Chairs (Fred Blackwell, Leslye Corsiglia and Michael Covarrubias), and Steve Heminger, Executive Director of MTC/ABAG. It was structured around a Technical Committee of policy experts and practitioners and a Steering Committee of elected officials, thought leaders and major employers. The Technical Committee's role was to recommend actions for addressing the crisis. Those recommendations went to the Steering Committee for review, refinement and final approval. The CASA effort was supported and staffed by MTC/ABAG and a team of consultants. Profiles of the Co-Chairs and rosters for both the Steering and Technical Committees are included as appendices to this document.

### Phase One: Foundational Work (June 2017-Jan 2018)

The first phase of the CASA process was focused on learning, sharing perspectives, and developing a framework for the process of developing the CASA Compact. Experts from UC Berkeley provided in-depth analysis of the many causes and consequences of the crisis, ensuring that all members of the Committees were operating from a shared base of knowledge.

On the basis of this shared understanding, the Co-Chairs and Committee forged a detailed framework (shown as Figure A) to shape the CASA process and the ultimate Compact. The framework is organized around three principal outcomes, or 'Three Ps' as they became known in CASA parlance:

- (1) Increasing housing *production* at all levels of affordability,
- (2) *Preserving* existing affordable housing, and
- (3) *Protecting* vulnerable households from housing instability and displacement.

### Phase Two: Brainstorming Action Ideas (Jan-July 2018)

Next, the Committees spent six months brainstorming and vetting upwards of 30 action ideas. This process was driven by workgroups who dedicated hundreds of hours to meeting, researching and drafting ideas. Community-based organizations and members of the public also participating in generating ideas. A series of listening sessions around the region solicited input from vulnerable households in identifying priority actions that CASA should consider. Members of the public also shared ideas and feedback through public comment. Each idea was written up and presented to the Technical Committee for vetting. The Committee members used a "gradients of agreement" tool to score each idea on a scale of 1-5. The Steering Committee reviewed and refined the most promising ideas that emerged from the Technical Committee.

### Phase 3: Crafting the Compact (Sept-Dec 2018)

In the final phase, the Co-Chairs distilled the 30+ action plans into the Compact you see before you. This happened through an iterative process, with successive versions of the Compact presented to both the Technical and Steering Committees and refined based on their input.

### Phase 4, CASA Implementation

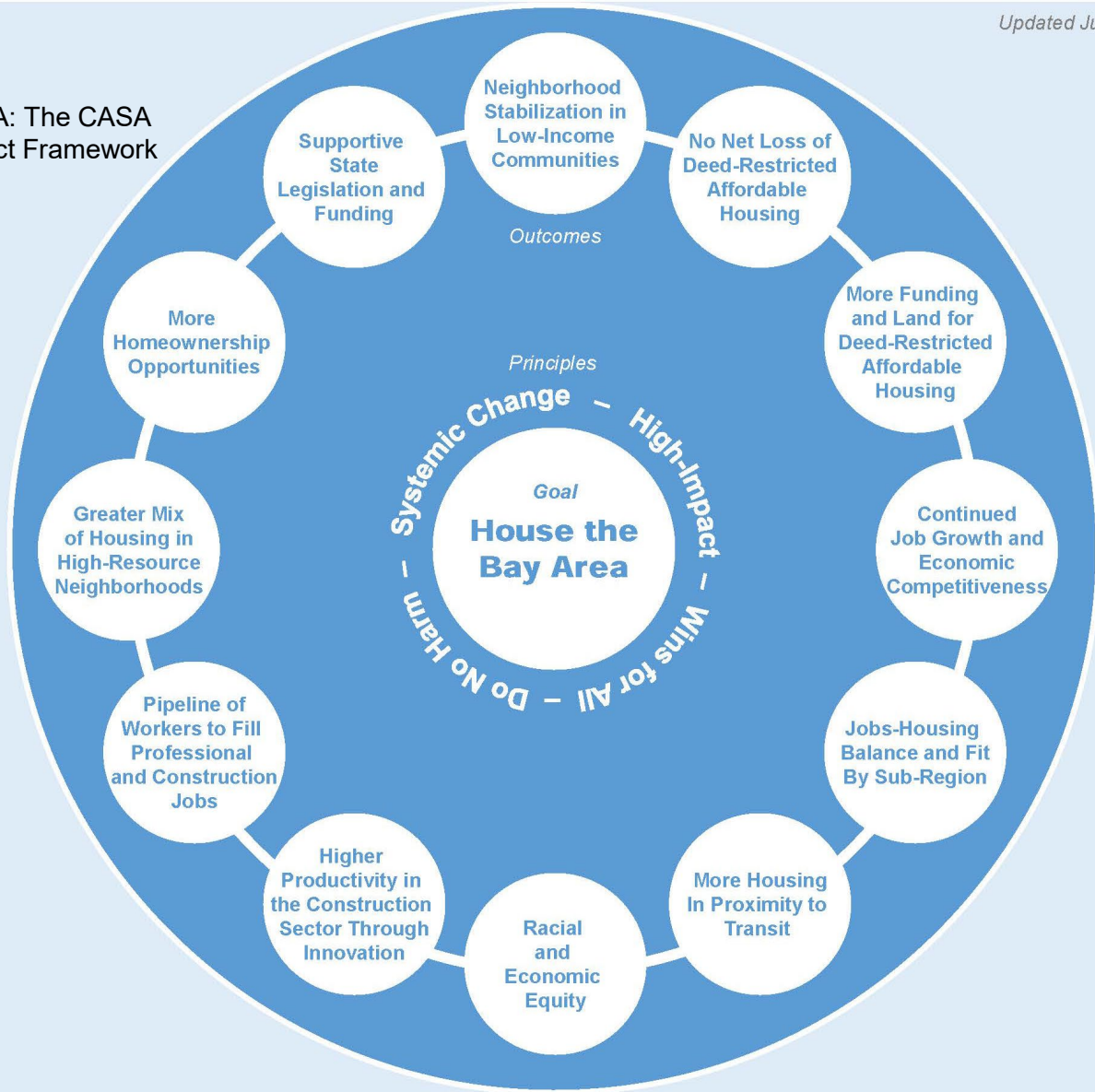
CASA leadership and key members will continue to work in cross-sector coordination with State and local elected officials and agencies to implement the principles of the CASA Compact.

### Core Principles

Over the course of this process, the participants forged an understanding around core principles that underpin the recommendations in this document. These include:

1. **Shared responsibility:** All sectors and interests should share the burdens and benefits of housing the Bay Area.
2. **Inclusion everywhere:** Find ways to include more housing at all income levels, in every jurisdiction.
3. **Promote 'Missing Middle' housing types:** Encourage the development of smaller homes that are more affordable by design and less likely to cause displacement.
4. **Stabilize communities:** Preserve the historic diversity and access to opportunity in the Bay Area.
5. **Balance across the Three Ps:** Individual components of the Compact should move forward together and avoid undermining each other.
6. **Level the playing field:** The Compact should create fair, more uniform standards for the housing development process, across the Bay Area.
7. **Minimize administrative burden:** We should minimize new administrative requirements and focus on strategies that can be implemented rapidly and efficiently.

Figure A: The CASA Compact Framework



**Numeric Targets**  
**35,000 Housing Units / Year**  
 14,000 of Which are Affordable to Lower-Income and 7,000 to Moderate-Income Households

**30,000 Affordable Units**  
 26,000 of Which are Market-Rate Affordable Units, and 4,000 are At-Risk Over the Next 5 Years

**300,000 Lower-Income HHs**  
 Who are Extremely Rent-Burdened (they spend more than 50 percent of their income on housing)

"Lenses"

	<b>Timeframe</b>	<b>Geography</b>	<b>Level of Effort</b>
	Near-Term	Within/Outside PDAs	Early Wins
	Medium-Term	High-Opportunity Areas	Low-Hanging Fruit
	Long-Term	Disadvantaged Areas	Big Ideas

Typology of Actions



## Compact Element #1: Just Cause Eviction Policy

**Brief Summary:** Ensure that all Bay Area tenants are protected from arbitrary evictions by adopting a region-wide policy requiring landlords to cite specific "just causes" (both fault and no-fault) for termination of tenancy, such as failure to pay rent or violation of lease terms. Require landlords to provide relocation assistance for covered no-fault evictions.

---

**Desired Effect:** Just cause protects tenants from arbitrary evictions. Studies show that eviction can cause health issues, emotional trauma, school disruption for children, longer and costly commutes, and reduced wage earnings for adults. Just cause eviction protections promote tenant stability and limit eviction-related health consequences. See Figure 1 for recent eviction trends in San Francisco.

---

**References and Models:** Action Plan 2.1; NJ state Just Cause Law; Large cities in CA (SF, Oakland, San Jose, LA)

---

### Detailed Proposal:

---

**Permissible causes for eviction:** both fault and no-fault evictions should be allowable under a region-wide just cause policy. Fault eviction causes should include failure to pay rent, substantial breach of a material term of the rental agreement, nuisance, waste, or illegal conduct. No-fault causes should include owner move-in, withdrawal of unit from rental market (Ellis Act/condo conversions), unit unsafe for habitation, or demolition/substantial rehabilitation

**Coverage:** just cause eviction standards should apply to all rental units except the following:

- Government owned and government subsidized housing units or housing with existing government regulatory assessments that govern rent increases in subsidized rental units (e.g., Section 8)
- Transient and tourist hotel occupancy as defined in Civil Code Section 1940(b)
- Housing accommodations in nonprofit hospital, religious facility, or extended care facility
- Dormitories owned and operated by an institution of higher education or a K-12 school
- Tenant shares bathroom/kitchen with the owner who maintains principal residence there
- Single owner-occupied residences including when the owner-occupant rents or leases 2 units (including ADU and JADU) or bedrooms
- Resident-owned nonprofit housing

**Waiting Period:** the protections should apply only after a tenant has been in occupancy (with or without a lease) for at least 12 months. All existing tenancies should be subject to these protections, effective immediately upon the policy being signed into law.

**Notice Requirements:** owners should be required to provide notice to tenants at the beginning of each tenancy as to tenant rights with copy of lease. This notice should be in the form of a lease addendum that is signed by the tenant at the time the lease is signed. The grounds for eviction should be set forth in the notice to terminate tenancy.

If the reason for the termination is a curable lease violation, the owner should be required to provide an initial notice with an opportunity to cure before the notice of termination. If the lease violation is related to specific illegal activity that presents the potential for harm to other tenants, there should not be a right to cure. Separate provisions should be made for domestic violence situations.

**Relocation Assistance:** relocation assistance should be provided in all covered no-fault causes where tenants have been in occupancy for at least 12 months, except in cases where the owner is moving into the unit. At time of service of notice to quit, the landlord should notify the tenants of their right to relocation assistance and provide payment directly to the tenant. The amount of relocation assistance should be tiered based on number of bedrooms (see San Jose example). Relocation assistance should be available to all qualifying tenants regardless of income.

**Preemption of Local Ordinances:** this law should not preempt more restrictive local ordinances.

---

Figure 1: Low-Income Renters in 2016 and Sensitive Communities  
Sonoma

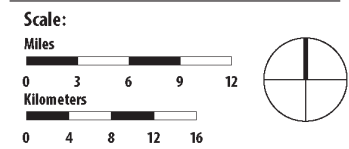


## Low-Income Renters, 2016

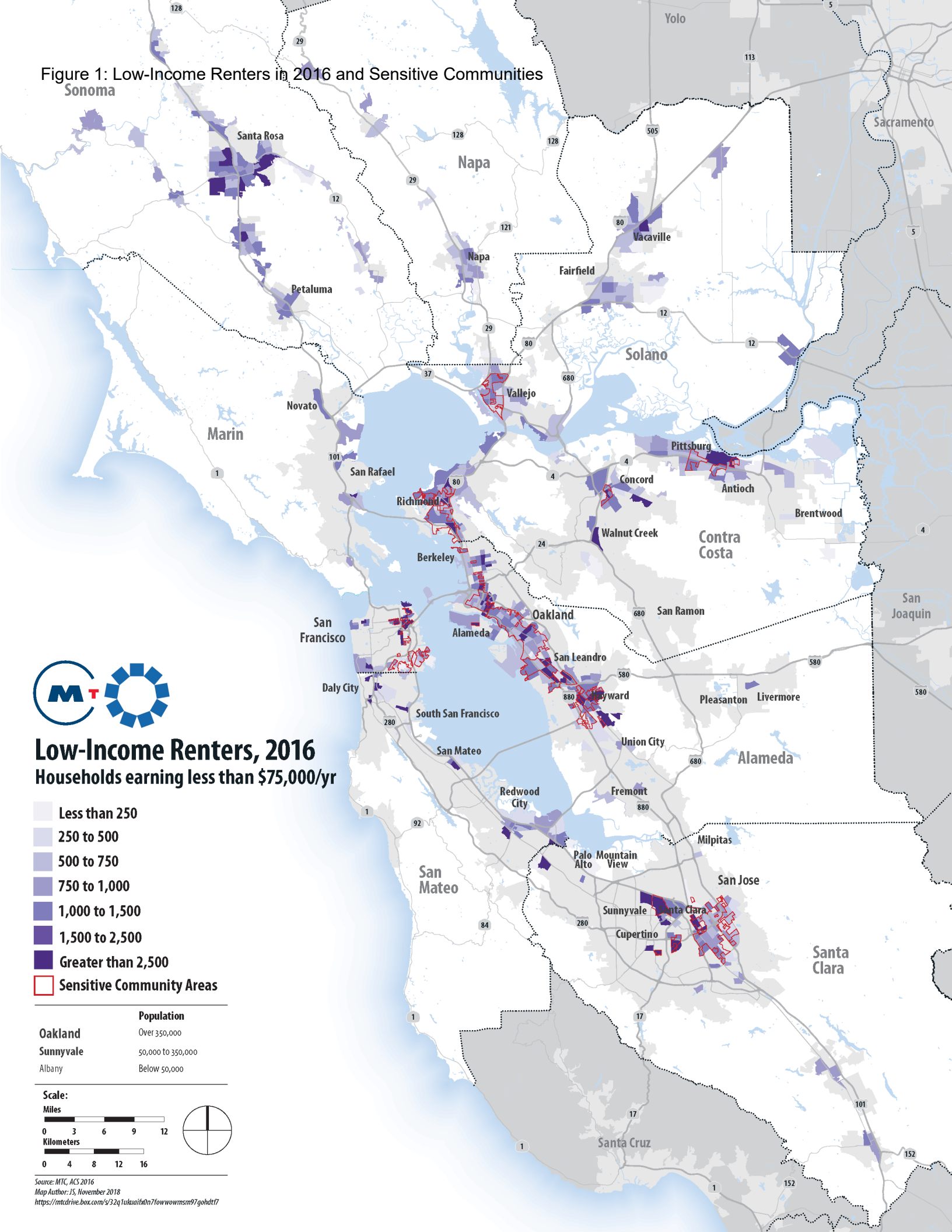
Households earning less than \$75,000/yr

- Less than 250
- 250 to 500
- 500 to 750
- 750 to 1,000
- 1,000 to 1,500
- 1,500 to 2,500
- Greater than 2,500
- Sensitive Community Areas

	Population
Oakland	Over 350,000
Sunnyvale	50,000 to 350,000
Albany	Below 50,000



Source: MTC, ACS 2016  
 Map Author: JS, November 2018  
<https://mtc.drive.box.com/s/32q1ukuaib0n7fowwvmsm97gohdt7>





## Compact Element #2: Emergency Rent Cap

**Brief Summary:** Establish a Bay Area-wide emergency rent cap that limits annual increases in rent to a reasonable amount.

---

**Desired Effect:** An emergency rent cap would prevent extreme increases in rent on a year-to-year basis, thereby decreasing the number of households who are at risk of displacement and homelessness, decreasing the number of households who are rent burdened, and promoting tenant and community stability. Extreme rent increases can pose a particular burden for tenants who are low and fixed income. Can be extended after the emergency period. Figure 2 maps the many Bay Area communities at risk of displacement.

---

**References and Models:** Action Plans 1.1, 1.2, 1.3; Existing State Anti-Gouging Law in States of Emergency

---

### Detailed Proposal:

---

**Cap on Annual Rent Increase:** for an emergency period (15 years), no landlord should increase rent by more than CPI+5% in any year of tenancy. The notice of allowable rent increase should be provided annually.

**Vacancy Provision:** the cap on rent increase should apply to the renter, not the unit.

**Coverage:** the following unit types should be exempt from the cap:

- Affordable housing properties governed by regulatory agreements;
- ADUs on owner-occupied properties;
- Dormitories.

**Pass-Throughs, Banking and Capital Improvements:** if rent has declined or if landlord has not increased rents for several consecutive years, landlords should be able to bank those unused rent increases for 3-5 years. When drawing upon banked rent increases, landlords should not be allowed to increase rents more than 10-15% annually.

A landlord should be able to pass through a percentage of capital improvements and expenses to renters, not to exceed a fixed dollar amount per year.

**Preemption of Local Ordinances:** this law should not preempt more restrictive local ordinances.

**State of Emergency:** rent cap shall be evaluated before any extension is granted to study impact of rent cap on housing market overall.

---

Figure 2: Map of Displacement Risk

Sonoma



# High-Displacement Risk Areas

University of California Berkeley  
American Community Survey 2009-2013  
Tracts Within Urbanized Areas

## Lower Income Tracts

Greater than 39% of Households are considered Low Income.

- Not losing LI Households, or Very Early Stages
- At Risk of Gentrification or Displacement
- Undergoing Displacement
- Advanced Gentrification

## Moderate to High Income Tracts

Less than 39% of Households are considered Low Income.

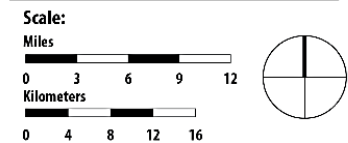
- Not Losing LI Households, or Very Early Stages
- At Risk of Displacement
- Undergoing Displacement
- Advanced Exclusion

About this Data:

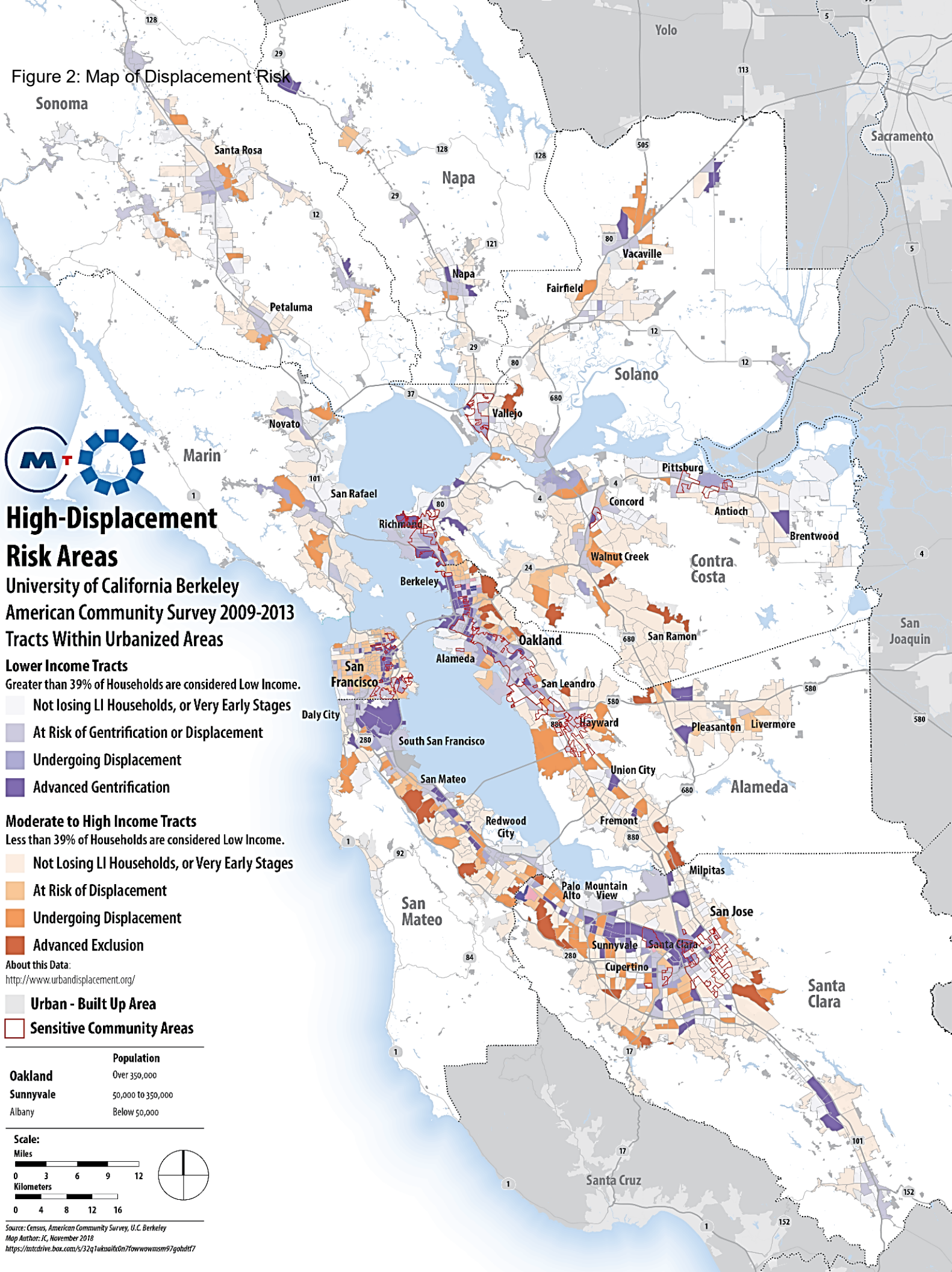
<http://www.urbandisplacement.org/>

- Urban - Built Up Area
- Sensitive Community Areas

	Population
Oakland	Over 350,000
Sunnyvale	50,000 to 350,000
Albany	Below 50,000



Source: Census, American Community Survey, U.C. Berkeley  
Map Author: J.C. November 2018  
<https://mtcdrive.box.com/s/32q1ukaaih0n7fowwvwm97gohdt7>



## Compact Element #3: Emergency Rent Assistance and Access to Legal Counsel

**Brief Summary:** For low-income tenants facing eviction, provide access to free legal counsel and emergency rent assistance.

---

**Desired Effect:** Access to a lawyer can be the difference between losing a home and keeping it. Ensuring that all tenants facing eviction have access to legal counsel would create a fairer justice system; prevent evictions and homelessness; improve health, stability, and opportunity for thousands of residents including children; and preserve existing affordable housing.

Non-payment of rent is the leading cause of evictions in the Bay Area. Figure 3 shows rent increase trends in Alameda County. An emergency rent assistance program would assist in cases where tenants have an urgent, temporary financial gap. It would help tenants stay in their homes, preventing evictions, periods of marginal housing, and homelessness for households at risk of eviction due to financial instability.

---

**References and Models:** Action Plans 3.1 and 4.1; SF Prop F (June 2018); New York City; Santa Clara County Emergency Assistance Network

---

### Detailed Proposal:

---

**Legal Representation:** all tenants who are faced with legal proceedings to evict them from their residence should have access to legal counsel, except when eviction proceedings are brought by a landlord or master tenant who resides in the same dwelling unit or property with tenant. The term “legal representation” should mean full scope representation provided to an individual by a designated organization or attorney which includes, but is not limited to, filing responsive pleadings, appearing on behalf of the tenant in court proceedings, and providing legal advice.

**Emergency Rent Assistance:** low-income tenants facing eviction and homelessness due to non-payment of rent should be eligible to receive emergency rent assistance. This assistance should be targeted to tenants who have an urgent, temporary financial gap and are at high risk for becoming homeless if evicted. The Regional Housing Enterprise (see Compact Element #10) should establish guidelines and policies for administering the program, including how to determine eligibility. The regional agency should identify, fund and oversee local service providers (public or non-profit) to carry out the program.

**Cap on Assistance:** the amount of total assistance should be capped at \$5,000 - \$10,000 per tenancy.

**Landlord Obligation:** landlord obligation should be limited to providing an addendum notice of this access in lease and eviction notice. Landlord should have no payment or any other obligations. If a tenant fails to seek legal counsel, it will not impede eviction proceedings for landlord.

**Means Testing:** emergency rental assistance should be limited those whose incomes do not exceed 80% of AMI. Legal services should be provided to all qualifying tenants regardless of income.

**Funding:** generate significant funds through Compact Element #9 to fund regional access to legal counsel and emergency rent assistance. Pro-bono counsel for tenants shall be encouraged.



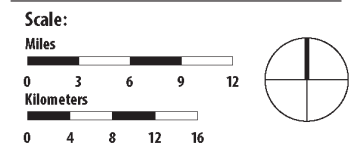
Figure 3: Map of Rent Increases, 2010-2016  
Sonoma



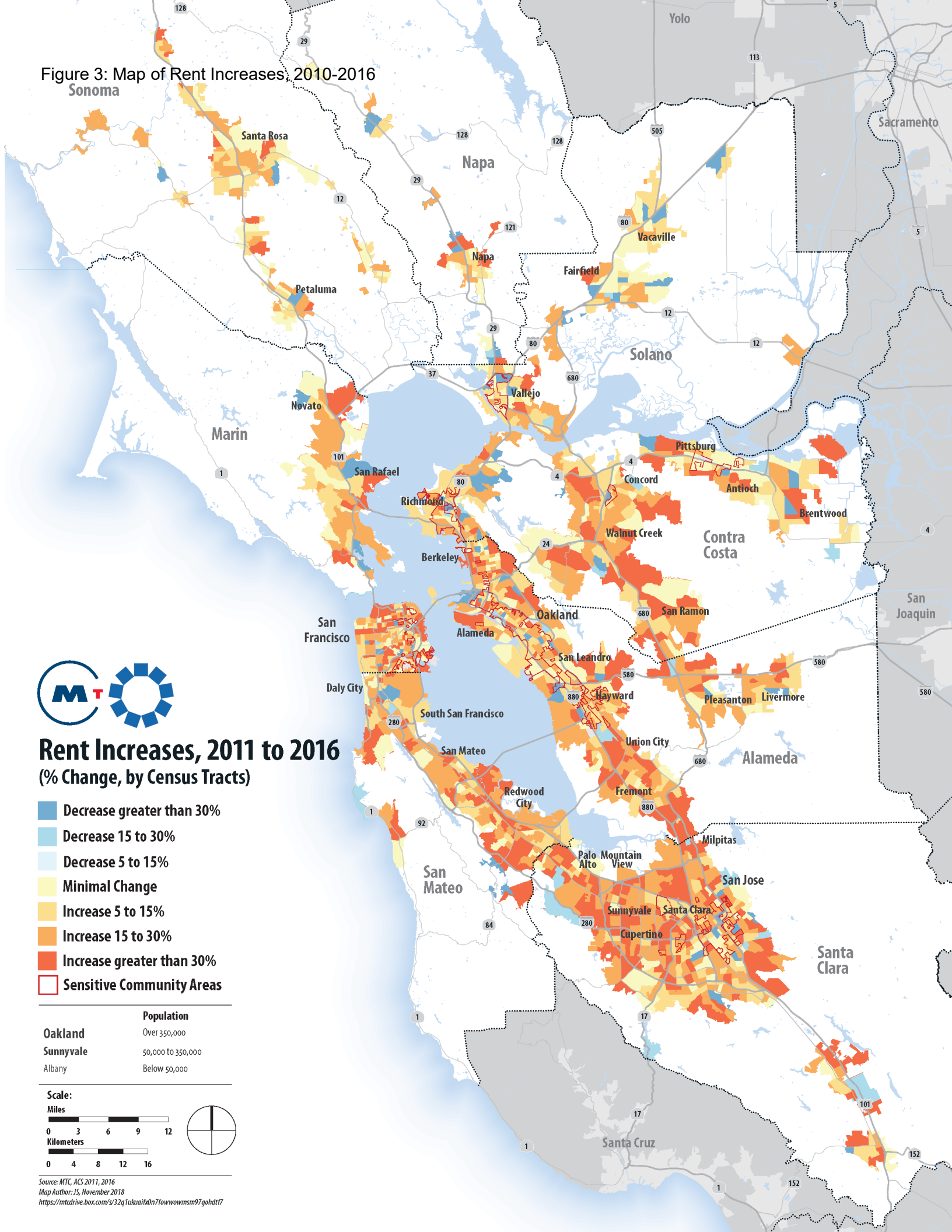
## Rent Increases, 2011 to 2016 (% Change, by Census Tracts)

- Decrease greater than 30%
- Decrease 15 to 30%
- Decrease 5 to 15%
- Minimal Change
- Increase 5 to 15%
- Increase 15 to 30%
- Increase greater than 30%
- Sensitive Community Areas

	Population
Oakland	Over 350,000
Sunnyvale	50,000 to 350,000
Albany	Below 50,000



Source: MTC, ACS 2011, 2016  
Map Author: JS, November 2018  
<https://mtdrive.box.com/s/32q1ukuaf6n7fowwowmsm97gohdtf7>



## Compact Element #4: Remove Regulatory Barriers to ADUs

**Brief Summary:** Extend current Bay Area best practices regarding Accessory Dwelling Units (ADUs) to every jurisdiction in the region. Amend existing state ADU law to remove regulatory barriers including ministerial approval for ADUs and Junior ADUs in residential zones, allowance for multiple ADUs in multi-family homes, and creation of a small homes building code (AB 2890 Ting).

---

**Desired Effect:** Existing single-family homes make up a significant portion of the region's land base. Local best practices in the region today allow both an ADU and Junior ADU on single family lots and multiple ADUs in existing multi-family buildings with ministerial approval. See Figure 4 for a prototypical ADU. Expanding these best practices regionwide would allow for a rapid increase in more affordable homes, and would help stabilize cost-burdened homeowners by creating a new source of income. If 20% of the region's 1.5 million single-family homeowners choose to build an ADU, this policy could create 300,000 new homes distributed throughout existing neighborhoods. This includes about 50,000 new units in Priority Development Areas alone.

---

**References and Models:** Action Plans 10.3, 10.4; UCB Chapple 2014; UCB Turner Center 2017; Legislative history SB 1069, AB 2890; Arlington VA, Portland OR, Seattle WA, Vancouver BC, State of Oregon Tiny Homes Code.

---

### Detailed Proposal:

---

**Local Standards for ADUs (see AB 2890 Ting):** new state law should require local jurisdictions in the Bay Area to encourage the creation of ADUs as follows:

- Require ministerial approval for both an ADU and a Junior ADU (JADU) in all residential zones including in rear yards or by division of existing homes into two units;
- ADUs receiving ministerial permits should not be used for short-term rentals;
- Encourage forgiveness of code violations (except health and safety) in grandfathered ADUs;
- Apply the Housing Accountability Act's provisions for determining project consistency.

Sprinklers should be required for ADUs if required under the building code for comparable home construction. Use of unlicensed contractors under "owner builder" permits shall be discouraged by requiring that a statement of owner liability be provided when building permit is issued.

**Impact Fees:** require impact fees for ADUs and tiny homes to be charged on a per-square-foot basis and (2) only on net new living area over 500 sq. ft. per accessory unit.

**Small and Tiny Homes Building Code:** state law should create a building code for small homes and wheeled homes to reduce non-safety code requirements that disproportionately make small homes and tiny homes infeasible including energy standards, appliance and room sizes, and similar. Life-safety standards must be upheld.

**Owner Occupancy:** Local jurisdictions should be encouraged to adopt owner occupancy requirements for properties containing ADUs. If owner occupancy is required, reasonable annual monitoring programs that rely on existing published documents should be established.

---



Figure 4: Prototypes for Accessory Dwelling Units



### Unit Specifics

Unit Type	Detached
Bedrooms	1
Bathrooms	1
Square feet	495
Year built	2003
Construction	New construction
Total Cost	\$17k
Jurisdiction	Pacifica
Neighborhood	Sharp Park
Designer	Ernie Brousal, Daly City
Builder	Rick Lee, Pacifica
Use	Rent to a family member



11

### Unit Specifics

Unit Type	New construction
Bedrooms	2
Bathrooms	2
Square feet	800
Year built	2010-12
Construction	New construction (including primary dwelling)
Total Cost	\$11 million for entire project - second unit cost approximately 2.5%
Jurisdiction	San Carlos
Neighborhood	Devonshire
Designer	Fred Statchdee
Builder	Victor (homeowner)
Use	Residence (rents primary dwelling)



Kate & Miranda's Retirement Plan  
336 sq ft - 1 bedroom, 1 bath, kitchen, living room



Pedro's Backyard Cottage  
496 sq ft - 1 bedroom, 1 bath, kitchen, living room

## Compact Element #5: Minimum Zoning near Transit

**Brief Summary:** this element includes three components. In neighborhoods served by high quality bus service, establish minimum zoning on all residential, commercial, and institutional zones to allow ‘missing middle’ housing types up to 36’ tall. In neighborhoods surrounding the region’s major transit stops (rail stations and ferry terminals), establish minimum zoning to allow midrise residential housing up to 55’ tall (75’ tall with a density bonus). Allow sensitive communities to defer rezoning above 36’ while they develop context-sensitive plans. On large commercial-zoned parcels located near job centers, make housing an allowable use. For projects with 20 units or more, require inclusion of affordable units.

---

**Desired Effect:** This policy would create an inclusive mix of homes near transit and jobs, consistent with the goals of Plan Bay Area. It would spur the development of ‘missing middle’ housing types that are within reach of working families and blend into existing neighborhoods. This type of housing is common in pre-war neighborhoods of the East Bay and Peninsula but has largely been zoned out of existence in recent decades.

---

**References and Model Policies:** SB 827 (Wiener, 2017). CASA Action Plans 8.2, 10.3, 10.5, 10.6

---

### Detailed Proposal:

---

**Minimum Zoning Near Transit:** the state should establish minimum zoning for housing in neighborhoods served by existing high-quality transit as follows:

- *High quality bus service:* Residential uses up to 36’ tall should be allowed within ½ mile of bus stops with at least 15-minute headways at peak periods and 30-minute headways on weekends (as defined in SB 827).
- *Major transit stop:* Residential uses up to 55’ tall (75’ tall with density bonus) should be allowed within 1/4 -mile radius of major transit stops (rail stations and ferry terminals).

Development standards such as setbacks, unit sizes and lot coverage requirements should apply. Neither development standards nor other zoning and design controls should mandate densities lower than those prescribed above. . **Housing Overlay on Large Low-Density Commercial Sites:** the state should establish minimum zoning for housing on low-density commercial sites above a certain acreage that are located within the transit areas defined above.

**Tenant Protections and Preservation:** All sites rezoned under this policy should be subject to tenant protections, demolition controls and no net loss provisions. Sites occupied by a mobile home park, public housing, or Single Room Occupancy (SRO) built prior to the effective date of the enabling legislation should not be eligible for rezoning.

**Affordable Housing Requirements:** onsite affordable housing should be required at levels not less than state density bonus law.

Projects with 10-20 units should have the option to pay an in-lieu fee. This in-lieu fee should be deferred or waived for units that are sold or rented at or below missing middle income levels. This fee should be imposed at the time of sale. Funds generated by this fee should be deposited into a local or regional housing fund.

**Sensitive Communities:** if a major transit stop is located in or adjacent to a sensitive community, up-zoning above 36’ should be automatically deferred for a period of 3 years while the jurisdiction develops a context-sensitive plan for that community. The opt-out period should be extended beyond 3 years where good faith planning efforts are underway. If the community so chooses, it may opt into up-zoning to 55’ without a deferral period or community plan. The decision to opt in should be made by the local legislative body (city council or board of supervisors) and must involve consultation with residents of the sensitive community and at least one public hearing. Sensitive community areas represent the intersection of disadvantaged and vulnerable communities as defined by the following Bay Area regional agencies: MTC, SF Bay Conservation and Development Commission (BCDC), and the Bay Area Air Quality Management District. See Figure 5 for the map of these Transit Access and Sensitive Community Areas.

**Labor Standards:** The residential development shall comply with all applicable labor, construction, employment, and wage standards otherwise required by law and any other generally applicable requirement regarding the approval of a development project, including, but not limited to, the local government’s conditional use or other discretionary permit approval process, the California Environmental Quality Act, or a streamlined approval process that includes labor protections.

---



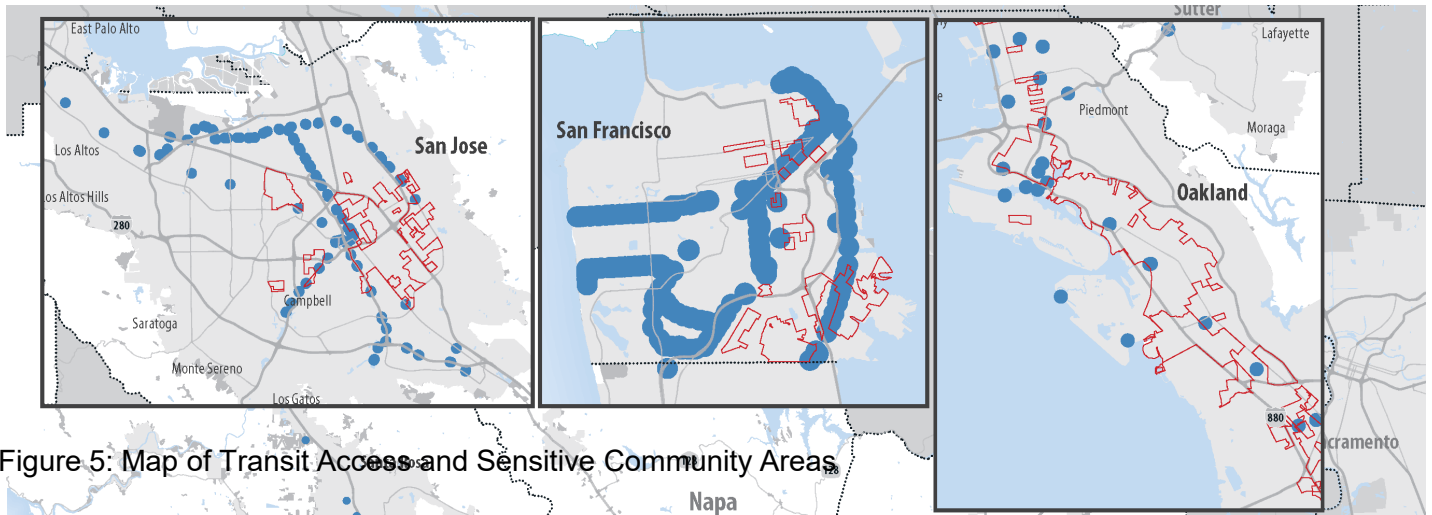
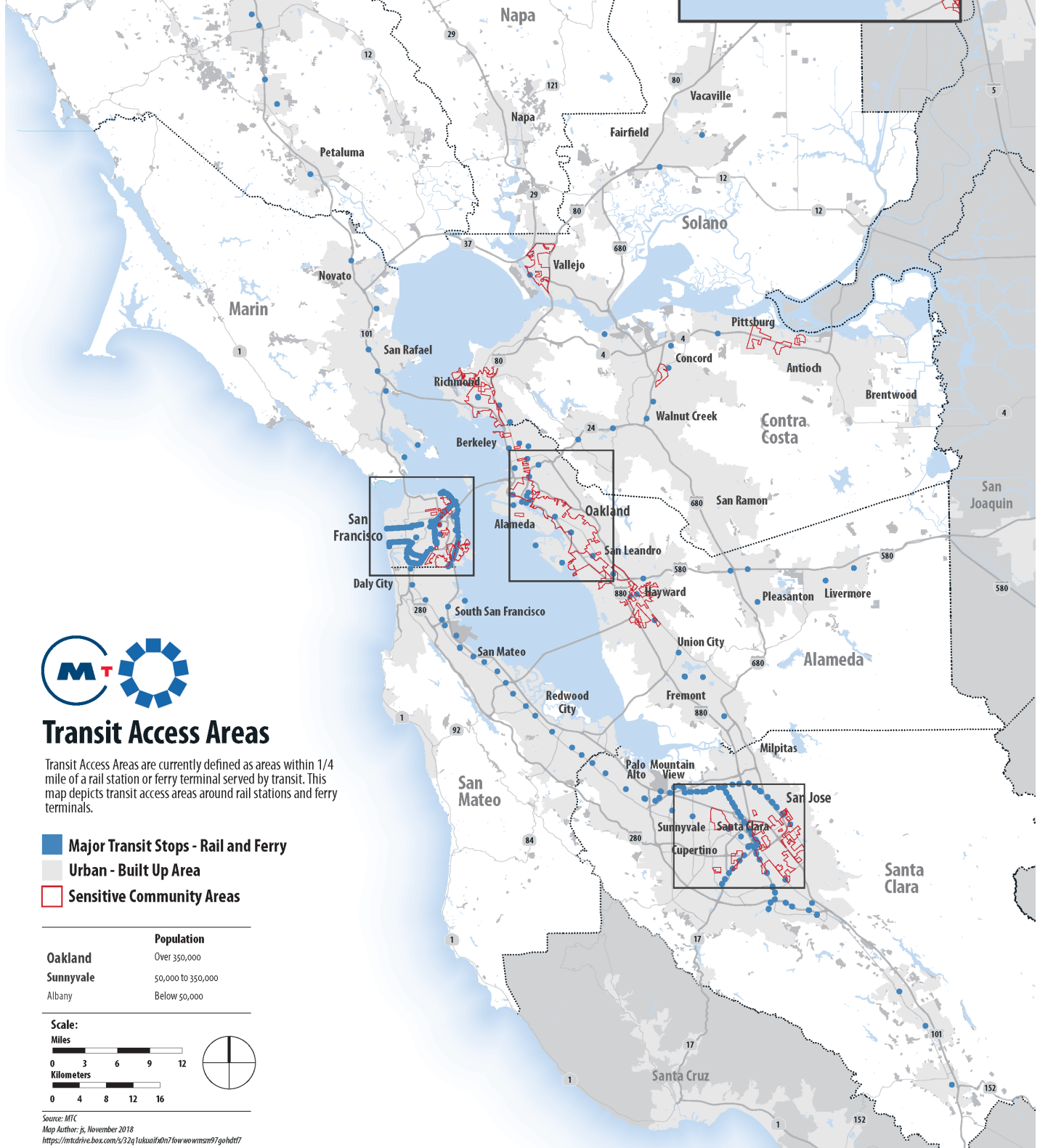


Figure 5: Map of Transit Access and Sensitive Community Areas

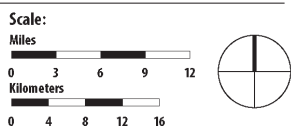


## Transit Access Areas

Transit Access Areas are currently defined as areas within 1/4 mile of a rail station or ferry terminal served by transit. This map depicts transit access areas around rail stations and ferry terminals.

- Major Transit Stops - Rail and Ferry
- Urban - Built Up Area
- Sensitive Community Areas

	Population
Oakland	Over 350,000
Sunnyvale	50,000 to 350,000
Albany	Below 50,000



Source: MTC  
Map Author: js, November 2018  
<https://mtcdrive.box.com/s/32q1ukauifd0n7fowwwmsms97gohdtf7>



## Compact Element #6: Good Government Reforms to Housing Approval Process

**Brief Summary:** Establish ‘good government’ standards for the entitlement and permitting of zoning-compliant residential projects. Require transparency and consistency in how residential impact fees are set and enforced. Figure 6 shows how complicated the approval process for housing can be in California.

---

**Desired Effect:** Research by the UC Berkeley Turner Center for Housing Innovation demonstrates that local government impact fees and inclusionary requirements, when combined with regulatory uncertainty and record-high construction costs, have made it economically infeasible to build a standard mid-rise housing project in many parts of the Bay Area. The American Planning Association recommends that local governments should restore direct reliance on adopted plans and create transparency, predictability, reliability and timeliness to the housing approvals process.

---

**References and Model Policies:** CASA Action Plan 12.1; Turner Center Report on Fee Costs; Berkeley Law Land Use Study; Roseville fee transparency

---

### Detailed Proposal:

---

**Standards for Processing Zoning-Compliant Residential Applications with Fewer than 500 Units:** local jurisdictions should be required to process zoning-compliant residential development applications in accordance with the following standards:

- Each jurisdiction should create and maintain an up-to-date listing of all rules, codes and standards that apply to residential development applications, including how an application is deemed complete. This information should be made available online and in print.
- Rules, fees and historic status should be locked at the date of application completeness.
- Rules, fees and historic status should be locked at the date of application completeness which shall be defined as providing only the elements on the agencies written application material.
- The jurisdiction should require no more than three de novo public hearings on a zoning-compliant residential application.
- Building permits should expire if not used in 24 months, with flexibility to adapt to changing economic conditions and other extenuating circumstances.
- Jurisdictions should apply the Housing Accountability Act’s standards for project consistency and remedies

**Standards for Impact Fees:** state law should create a set of uniform standards and requirements for Bay Area jurisdictions to follow when imposing impact fees on new residential development, as recommended by the UC Berkeley Turner Center:

- Every jurisdiction should conduct a comprehensive review and assessment of their fees to better understand the aggregate costs imposed.
- When determining the amount of fees to charge to new residential projects, jurisdictions should adhere to a standardized methodology and set of objective standards, rather than the current “reasonableness” test which is overly broad.
- Every jurisdiction should create and maintain an up-to-date fee schedule in a publicly accessible format.
- Adopt fee deferral programs which allow builders to pay some fees later in the development process.

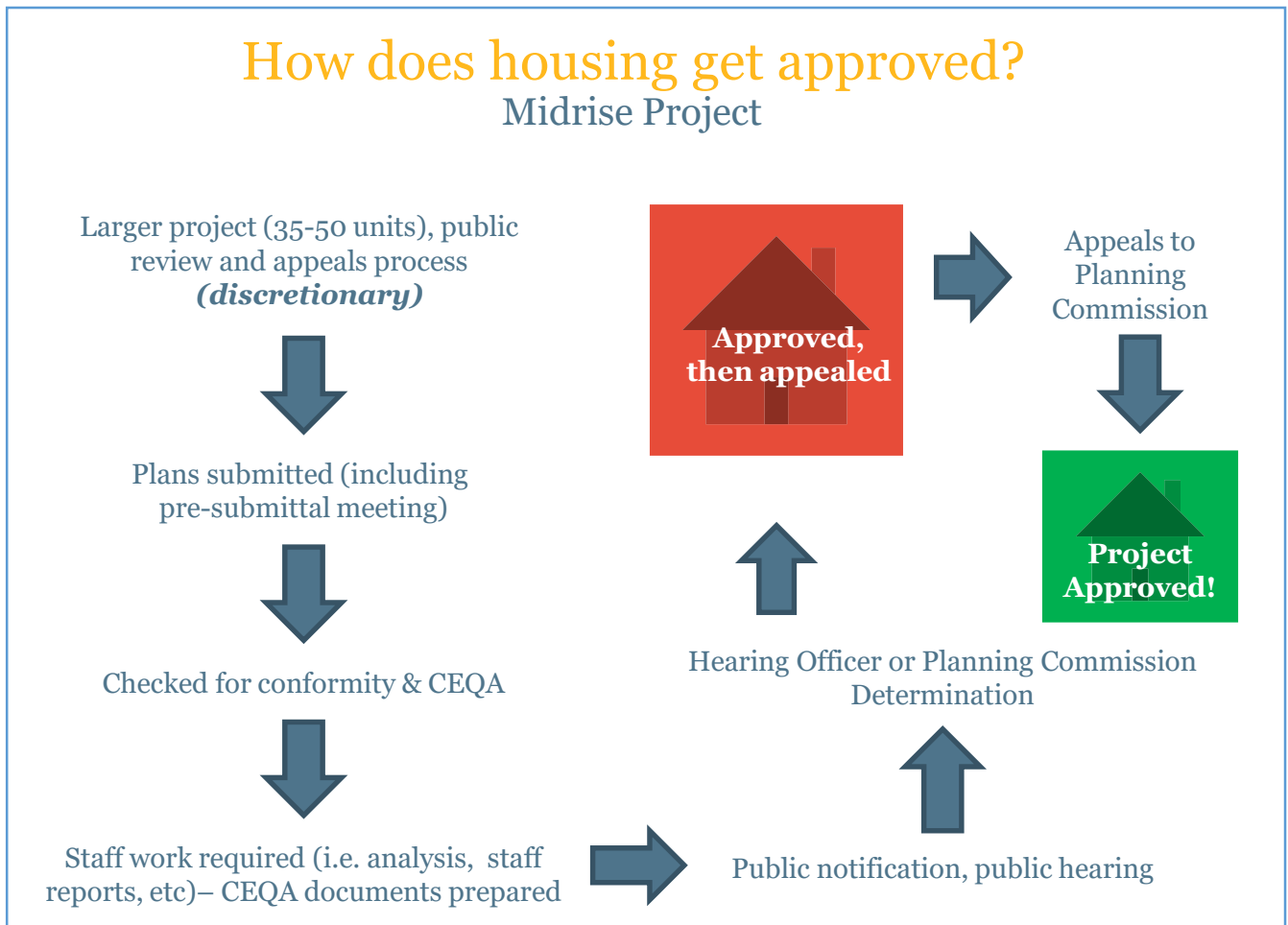
**Standards for Inclusionary Zoning:** state law should establish that programs which require inclusion, such as density bonus, local inclusionary requirements, housing impact fees and in-lieu fees, should not be additive. Require that in-lieu fees should be an option for fulfilling inclusionary requirements imposed without the density bonus. Existing local policies should be grandfathered in.

**Standards for Downzoning and Moratoria:** the State should create standards that govern the circumstances in which local governments downzone or impose building moratoria in existing or planned residential neighborhoods. Such actions run counter to state housing law and should only be undertaken to address an immediate crisis, such as a health and safety hazard or protection of low-income families at risk of displacement.

**Report Impositions That May Suppress Housing above the Hard Cost of Housing Construction:** jurisdictions should annually document all local agency impositions that increase the hard cost (excluding labor and materials) of housing construction, including fees and inclusionary zoning requirements. This information should be included in the jurisdiction’s annual Housing Element report.

---

Figure 6: Typical Local Housing Approval Processes and Timeframes



Source: the Turner Center for Housing Innovation, UC Berkeley, 2018,

## Compact Element #7: Expedited Approvals and Financial Incentives for Select Housing

**Brief Summary:** ensure timely approval of zoning-compliant housing projects and create financial incentives for enabling on-site affordability and prevailing wages. This streamlining policy will provide another option for projects that may not benefit from SB 35. This policy does not amend or replace SB 35. Allow Sensitive Communities to defer implementation while they develop a context-sensitive plan.

---

**Desired Effect:** This policy would make it possible to build more housing projects while addressing the critical shortage of housing labor, curbing unsafe labor practices, and providing on-site affordability for missing-middle income ranges that aren't eligible for other sources of subsidy. By harnessing future tax increment from the proposed housing development itself, local jurisdictions can get more affordable units built with less public subsidy. All taxing agencies will benefit from the multiplier effect of new construction beyond the project site. By providing expedited approvals, these projects will be approved and built more quickly.

---

**Models and References:** SB 35 (Weiner,2017); New York tax abatement; Action Plans Referenced: 12.2, 12.3, 17.1, 17.2

---

### Detailed Proposal:

---

**Streamlined Review Process:** state law should create a new, expedited review process for residential projects that meet thresholds outlined below. These projects should be granted a statutory CEQA exemption and should be subject to a limited discretionary review process. Projects should be approved within one year and should be subject to no more than three de novo public hearings.

**Qualifying Projects:** to qualify for streamlined review, projects should meet all of the following criteria:

- Complies with existing zoning standards;
- Located in an existing urbanized area;
- Eligible sites as defined in SB 35;
- Restricts at least twenty percent (20%) of onsite housing units to middle-income households (approximately 80% - 150% AMI depending on local market conditions), with an average affordability of 110% AMI;
- Provides prevailing wages and safe working conditions for all workers;
- Utilizes apprentice labor to grow the construction workforce.

**Financial Incentives to Offset Costs:** qualifying projects should receive financial incentives to offset the costs associated with providing income-restricted housing units and higher wages. Incentives could include some combination of the following:

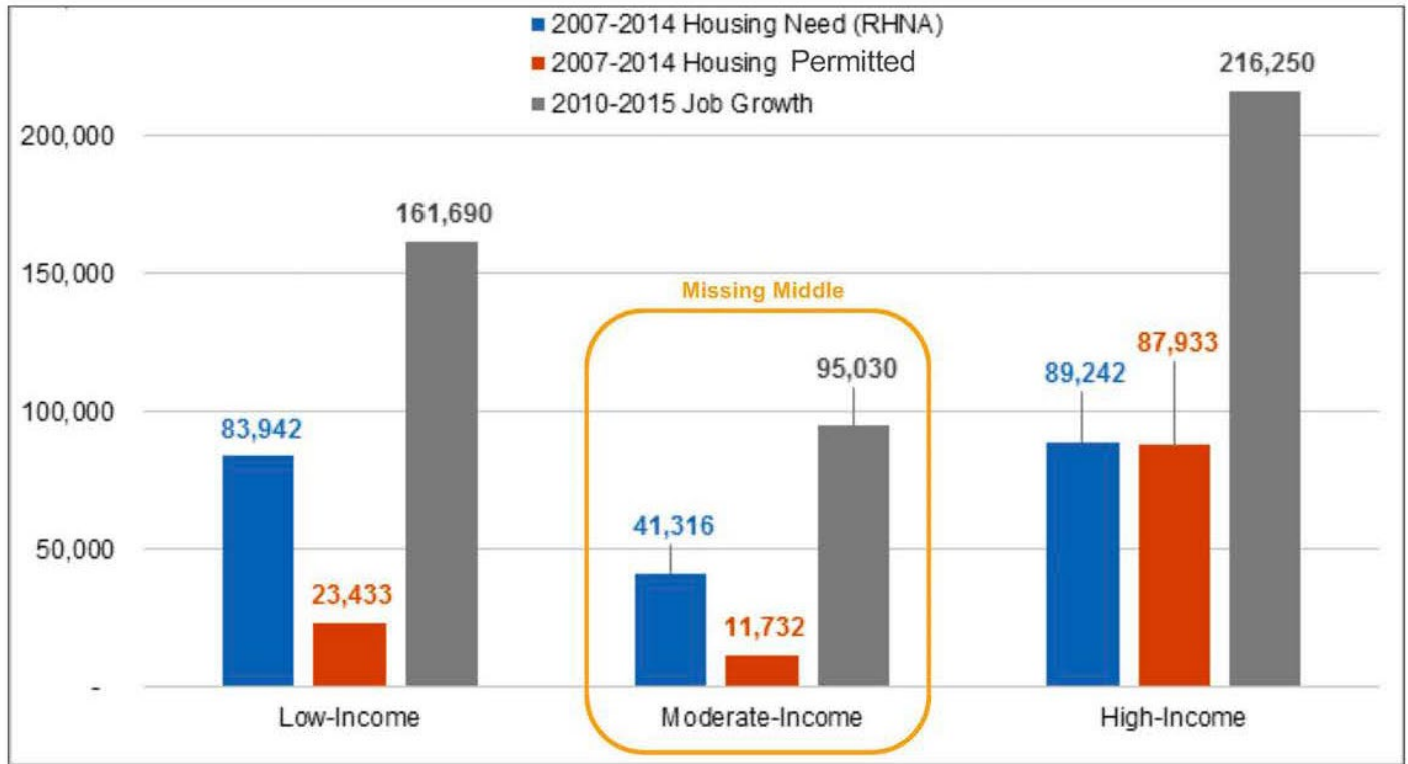
- Fifteen years of property tax increment abatement, modeled on the New York City program. Abatement should be structured so that units rented or sold at missing middle prices (ie 150% AMI or less) receive full abatement, and units rented or sold above this shall receive a lesser abatement (ie 50% -75% abatement)
- Cap impact fees at a reasonable level that allows project feasibility targeted to regional median
- Density bonus of 35%
- Parking reduced to 50% of local requirement (at the discretion of the developer)
- Relief from strict liability standards for ownership housing

**Sensitive Communities:** implementation of this policy in sensitive communities should be automatically deferred for a period of up to 3 years. During this time, the local jurisdiction should develop a context-sensitive plan for that community. The opt-out period should be extended beyond 3 years where good faith planning efforts are underway. If a Sensitive Community so chooses, it may opt to implement this policy effective immediately. The decision to opt in should be made by the local legislative body (city council or board of supervisors) and must involve consultation with residents of the sensitive community, and at least one public hearing. Sensitive community areas represent the intersection of disadvantaged and vulnerable communities as defined by the following Bay Area regional agencies: MTC, SF Bay Conservation and Development Commission (BCDC), and the Bay Area Air Quality Management District. See Figure 5 for the map of these Transit Access and Sensitive Community Areas.

---

Figure 7: Regional Housing Production is Worst for the “Missing Middle”

### Affordable Housing Permits Are Lower Than Identified Need



## Compact Element #8: Unlock Public Land for Affordable Housing

**Brief Summary:** Promote increased utilization of public land (surplus and underutilized) for affordable housing through a variety of legislative and regulatory changes, as well as the creation of new regional coordination and planning functions.

---

**Desired Effect:** Encourage the reuse of public land for creation of mixed-income/affordable housing by reducing barriers to development on public land. See Figure 8 for the largest public agency landowners near public transit.

---

**References and Models:** Action Plans 16.1; 16.2; Puget Sound region including Seattle; Enterprise; MTC/ABAG Study.

---

### Detailed Proposal:

---

#### Support reforms introduced in AB 2065 (Ting, 2017)

- Respond to the issue of charter cities and the requirement that all cities comply with State surplus lands law
- Create clear definition of “surplus” and “underutilized”
- Require cities, counties, State agencies, and all public agencies to create a full inventory of their publicly-owned sites and report them to HCD.
- Direct HCD to develop a statewide public lands database that will include all publicly-owned sites in the State of California, starting with a pilot in the Bay Area. The database will also include information on present uses. HCD would enforce a revised State Surplus Land Act with referral power to the Attorney General’s Office for infractions.

#### Amend State Housing Element Law to:

- Allow residential uses on all developable public land, regardless of zoning, by establishing a presumption in Housing Element Law that homes may be built on public land meeting certain criteria (eg not parkland).
- Require that Housing Elements include a discussion of the jurisdiction’s policies and plans to encourage the development of affordable housing on these sites.
- Require jurisdictions to report annually through housing element progress reports how they disposed of public and surplus sites.
- State and regional agencies should give preference in screening and scoring projects for discretionary funds to public agency project sponsors that dispose of surplus lands for affordable housing.

#### Regulatory and Process Changes

- Require State agencies to comply with the State Surplus Land Act and make surplus and underutilized property available for affordable housing, including deploying 10% of underutilized/surplus property for affordable housing on an annual basis.
- Amend State law time frames for surplus land disposition to expedite the process to no more than 24 months.
- Competitive funding programs for affordable housing, including the Low-Income Housing Tax Credit (LIHTC) and Affordable Housing & Sustainable Communities (AHSC) programs, should reward additional points to projects that propose affordable development on public land.
- The State of California should review its spatial guidelines for public facilities (i.e., schools) to evaluate potential for changes that could open up land for housing without compromising the quality of on-site public services.

**Labor Standards:** public lands released for housing should include policies that help expand the trained labor pool available for housing construction including requirements for trained apprentices and prevailing wages. Exceptions to these requirements on should be made for temporary housing built to address an emergency, and for housing built with volunteer labor (see Labor Code § 1720.4). Temporary housing shall be defined as follows:

Designed and constructed to be relocatable and transportable over public streets.

- Floor area of 500 square feet or less when measured at the most exterior walls.
  - Sited upon a temporary foundation in a manner that is designed to permit easy removal.
  - Designed to be removed within three (3) years of installation.
-

Figure 8: Top Ten Landowners for Publicly-Owned Parcels Suitable for Housing Near Transit

## Publicly-Owned Land

Source: MTC

Landowner	Number of Parcels	Total Acres
Bay Area Rapid Transit (BART) District	91	<b>229</b>
Santa Clara Valley Transportation Authority (VTA)	26	<b>178</b>
State of California	17	<b>42</b>
City/County of San Francisco	18	<b>26</b>
San Mateo County Transit District (SamTrans)	11	<b>18</b>
Union City Community Redevelopment	6	<b>15</b>
County of Santa Clara	7	<b>15</b>
City of Oakland	19	<b>10</b>
City of San Jose	5	<b>8</b>
Suisun City	17	<b>8</b>
<b>Total</b>	<b>217</b>	<b>548</b>

## Compact Element #9: Funding and Financing the CASA Compact

**Brief Summary:** Raise \$1.5 billion in new revenue annually from a broad range of sources, including property owners, developers, employers, local governments and the taxpayers, to fund implementation of the CASA Compact. While not all revenue ideas in Figure 9 will be implemented, no one sector would bear the burden on its own. No more than one revenue idea should be implemented under each of the five categories.

---

**Desired Effect:** The Compact identifies a range of strategies to protect tenants, preserve affordability and produce new units. Many of the strategies, such as “Access to Legal Counsel,” building 14,000 new subsidized housing units annually, and preserving 26,000 market-rate units as permanently subsidized units for lower-income households, require an infusion of new revenue.

---

**References and Models:** The entire CASA Compact

---

### Detailed Proposal:

---

**Funding gap:** CASA estimates that the funding gap to implement the Compact is \$2.5 billion per year over the next 15 years. CASA proposes to meet \$1.5 billion of this deficit with regional and local self-help measures. The remainder would be funded from additional state and federal sources.

**Potential sources:** new revenue could be raised through fees or taxes. In principle, new revenue would be raised from a range of sources to spread the responsibility. These sources may include property owners, developers, employers, local governments and taxpayers. The Compact identifies a menu of options (for further details see Figure 9):

- A. Vacant Homes Tax levied on property owners;
- B. Parcel Tax levied on property owners (residential and commercial);
- C. Commercial Linkage Fee charged to developers;
- D. Gross Receipts Tax levied on employers;
- E. Head Tax levied on employers;
- F. Revenue Set Asides for Redevelopment Agencies (local governments);
- G. Revenue Sharing Contribution into a region-wide housing program for local governments;
- H. 1/4-cent Sales Tax; and
- I. General Obligation Bonds, reissued every five years.

**Allocation formula:** new revenues would be allocated by the following shares:

- Up to 10 percent for local jurisdiction incentives (including funding for hiring more building inspectors);
- Up to 10 percent for tenant protection services;
- Up to 20 percent for preservation; and
- A minimum of 60 percent for subsidized housing production.

**Distribution formula:** new revenues would be distributed by the following shares (total expenditures would still meet the allocation formula (see above), and be subject to objective performance standards and outcomes):

- 75 percent to county of origin (return to source); and
- 25 percent to a regional program (revenue-sharing).

**Labor Standards:** public funding through CASA shall include a requirement for trained apprentices and prevailing wages, calibrated to ensure affordable housing project feasibility and continued eligibility for state resources. Projects under a certain size should be required to comply with existing wage and labor laws and standards.

**Administration:** revenue collection and disbursement would be managed by the Regional Housing Enterprise (see next Element). New revenue would be authorized based on fund source but may include state enabling legislation, a decision of the RHE board, or a vote of the people in the Bay Area.

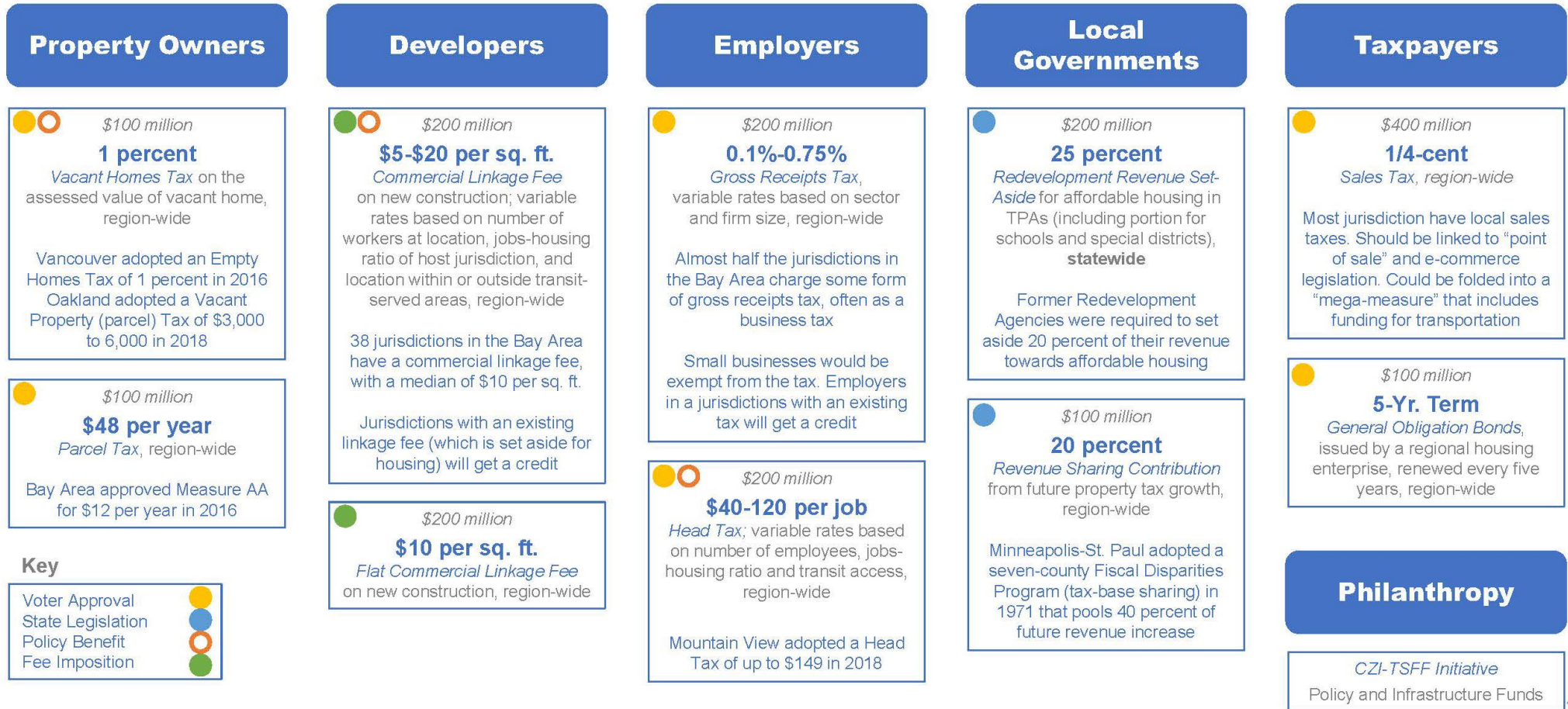
---



# Menu of Funding Sources to Implement the Compact

## Potential New Sources of Revenue

Target: \$1.5 billion per year





## Compact Element #10: Regional Housing Enterprise

**Brief Summary:** Establish a regional leadership entity to implement the CASA Compact, track and report progress, and provide incentives and technical assistance. The entity must be governed by an independent board with representation for key stakeholder groups that helped develop the Compact. The housing entity would not play a regulatory/enforcement role.

---

**Desired Effect:** Existing regional agencies either do not have the mandate (for e.g., the Metropolitan Transportation Commission) or the resources/tools (for e.g., the Association of Bay Area Governments) to directly tackle the region's pressing displacement and affordable housing crisis. The CASA Compact will set a bold region-wide agenda for addressing protection of existing tenants, preservation of existing affordable units and production of both market-rate and subsidized units. To implement this agenda, a broad coalition of stakeholders, who have helped shape the CASA Compact, must stay engaged with state legislative advocacy, building support for raising new revenue and financing programs, tracking and monitoring progress, keeping the public engaged, and taking a regional approach to challenges such as homelessness. A regional approach can balance inequities and imbalances across multiple jurisdiction that have to contend with varying market strengths, fiscal challenges and staff expertise.

---

**Models:** New York City Housing Development Corporation (housing finance); Twin Cities (revenue-sharing)

---

**References:** The entire CASA Compact

---

### Detailed Proposal:

---

**Board Structure and Governance:** CASA recommends establishing a Regional Housing Enterprise (RHE) to coordinate and lead implementation of the CASA Compact. State law should establish an independent board, with broad representation to MTC, ABAG and key stakeholder groups that helped develop the CASA Compact. See Figure 10 for graphic depiction of RHE.

**Authority:** the state should form the RHE through an act of legislation and give it authority to collect new revenue (through fees or taxes); disburse the revenue to programs and projects in the expenditure plans (consistent with the CASA Compact); purchase, lease and hold land; and provide direct assistance. The RHE will not have regulatory authority.

#### Roles and Responsibilities

*Revenue administration and debt issuance* – using the authority to levy fees and seek voter approval to impose taxes for housing, the RHE may collect and disburse new funding, issue debt based as needed, and allocate funding to protection, preservation and production programs, as laid out in the CASA Compact.

*Land leasing and disposition* – the RHE may act on behalf of the related public agency to lease or purchase land for housing development and assemble parcels, when appropriate. The RHE may hold and bank land, based on market conditions.

*Monitoring and reporting* – the RHE may coordinate with MTC/ABAG to collect relevant data (including on local housing performance), conduct research and analysis, and disseminate information as part of its monitoring and reporting role. The RHE may also conduct evaluation of its program to improve stated CASA outcomes.

*Enhanced technical assistance* – the RHE may coordinate with MTC/ABAG to provide extensive support and technical assistance to local jurisdictions (especially smaller jurisdictions with limited staff capacity), education and awareness for stakeholders (such as tenants and landlords), and communication materials for the broader public.

*Oversight of protections programs* – while the RHE will not have an administrative role in implementing tenant protection policies, the board would provide oversight when allocating funding.

**Staffing:** the RHE will be supported by the consolidated staff of MTC/ABAG, with additional staff added in specialized areas such as debt issuance, land leasing and disposition, financing projects, etc.

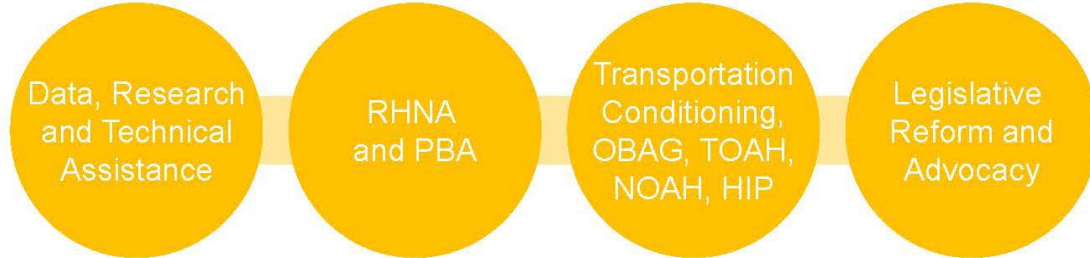
**Administration:** this state-enabled policy package in the CASA Compact will be implemented by the RHE. Some capacity would be needed at the local and county-level to implement the protection strategies.

---

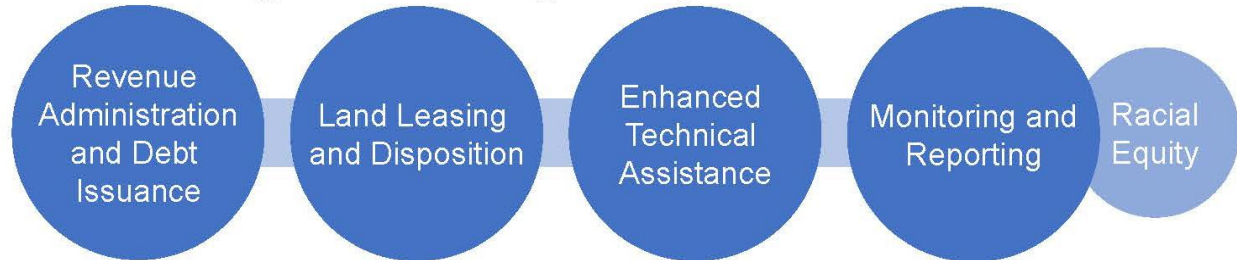
Figure 10: Regional Housing Enterprise

# Regional Housing Enterprise

## MTC/ABAG Roles and Responsibilities



## Regional Housing Enterprise Roles



## Regional Housing Enterprise Governance

- **Independent board** w/ representation from MTC, ABAG and key stakeholders
- Supported by **MTC/ABAG consolidated staff** (with additions in specialized areas such as debt issuance, land leasing, etc.)

# Calls for Action

The CASA Compact sets a bold region-wide agenda for addressing the protection of existing tenants, preservation of existing affordable units and production of both market-rate and subsidized units. The CASA Compact Elements represent key reforms that were developed through an intensive 18-month process encompassing multiple stakeholders and constituencies. Supportive state action on the issues outlined below in concert with the implementation of the CASA Compact will fundamentally “turn the tide” on the Bay Area’s housing crisis.

---

## Call for Action: Redevelopment 2.0

**Background:** The elimination of redevelopment agencies in California severely restricted the production of affordable housing and market rate housing in the Bay Area. Prior to dissolution, redevelopment agencies in the region provided \$200 million in annual funding for affordable housing that was highly leveraged with other funding sources. In addition, redevelopment agencies provided funding, expertise and infrastructure to advance the production of market rate housing in mixed-use, infill developments. CASA supports the development of a new redevelopment framework to advance the production of extremely low, very low, and low-income housing, and to leverage funding for mixed income, infill housing.

**CASA Call for Action:** Pass legislation enabling the re-establishment of redevelopment agencies in California to provide a significant source of new funding for affordable and mixed income development. Redevelopment agencies should be focused on development activities that are audited regularly, with local projects subject to state level reviews. A new redevelopment framework in California should reinforce a strong link between housing and jobs and transit. Funding should be designed to leverage other sources, including new regional funding through the implementation of the CASA Compact.

**References:** The entire CASA Compact

---

## Call for Action: Lower the Voter Threshold for Housing Funding Measures

**Background:** Bay Area voters have demonstrated — through their past approval of major transportation, school, housing, and water bonds — that they understand the importance of investing in the region’s future. Although Bay Area voters have passed a significant number of funding measures to expand the supply of affordable housing, on too many occasions an overwhelming majority of voters have supported new funding but the final tally fell short of the two-thirds majority needed for approval under current state law. When provided the opportunity, voters supported lowering the voter threshold for school bonds to a 55 percent vote. The well-being of California’s children was a motivating factor in lowering the voter threshold for school funding. Ensuring that future generations, our children and grandchildren, have the housing opportunities they will need to remain in the Bay Area is a central purpose of the CASA Compact.

**CASA Call for Action:** Pass legislation that will provide voters statewide with the opportunity to apply a 55 percent threshold for investments in affordable housing and housing production. This legislative priority is critical to the successful implementation of the CASA Compact — and to the Bay Area’s prosperity and quality of life.

**References:** The entire CASA Compact

---

## Call for Action: Proposition 13 Fiscal Reforms Fiscalization of Land Use

**Background:** Under Proposition 13, local jurisdictions in California are “paid more” for commercial land uses than for housing. This “fiscalization of land use” is a central factor in the Jobs-Housing Imbalance that exists in the Bay Area resulting in long commutes, traffic congestion and a diminished quality of life for millions of Bay Area residents. The California Tax Code in effect punishes cities that build more housing and rewards cities that build commercial space without commensurate housing for workers and their families. To address the revenue imbalance related to new housing, jurisdictions have raised impact fees and other development requirements that make housing even more expensive so that cities and counties may maintain infrastructure and provide for the needs of existing residents.

**CASA Call for Action:** Pass legislation that will return e-commerce/internet sales tax revenues to the point of sale - not the point of distribution as currently - to provide cities that have a significant residential base with a commensurate fiscal stimulus for new housing. Also pass legislation that will change the Proposition 13 property tax allocation formula to provide jurisdictions building more housing with a higher share of property tax revenue.

---

---

**References:** CASA Elements # 9 and # 10.

---

## Call for Action: Homelessness

---

**Background:** The Bay Area has one of the largest and least sheltered homeless populations in North America. The proliferation of homeless encampments from select urban neighborhoods to locations across the region is the most visible and arguably disheartening manifestation of the Bay Area's extreme housing affordability crisis. Although this is one of the most prosperous regions in the world, every night thousands of people sleep on our streets. The complexity and scale of homelessness in the Bay Area has increased exponentially as previously housed people including families with children, veterans, and senior citizens cannot find shelter. In the nation's most expensive housing market, commonplace life circumstances (e.g. illness, job loss, and separation/divorce) result in too many of our neighbors being unable to afford monthly rent and resulting in a downward spiral to homelessness.

---

**CASA Call for Action:** California is experiencing an affordability and housing crisis that is negatively impacting thousands of Californians. The work of CASA has endeavored to put forth a package of policy interventions to house the Bay Area. Homelessness is a humanitarian crisis that deeply impacting the entire Bay Area. CASA recognizes that homelessness is a regional issue that requires alignment across geographies in order to tackle this problem. CASA's funding package must include resources that help produce housing for formerly homeless people, prevent homelessness when possible and make homelessness rare, brief and non-reoccurring.

---

**References:** The following CASA Elements include measures to reduce the region's unhoused population, provide more temporary options for homeless housing, and streamline approvals of permanent homeless housing developments which are often strongly opposed by project neighbors:

CASA Elements 1,2,3 - Tenant Protections: Critical to stabilize households and reduce displacement from housing that has caused significant rapid rise in unhoused population

CASA Element 4 – Accessory Dwelling Units (ADUs) /Tiny Homes: create more housing options for populations vulnerable to economic setback by allowing more of the smallest naturally affordable home types in every neighborhood including seniors or their family members, disabled family members, students, Section 8 recipients.

CASA Elements 5, 6, 7- Up-zone and streamline to increase income restricted and market rate housing options and reduce displacement and upward rent pressure on existing homes and neighborhoods

CASA Element 8 - Public land: encourage immediate disposal of more public land for affordable housing to create more sites and reduce the subsidy needed.

CASA Element 9 - Public funding: More funding for the preservation and production of affordable housing, the provision for new tenant protection measures, and new permanent supportive housing

---

## Call for Action: Grow and Stabilize the Construction Labor Force

---

**Background:** Growing the construction labor force and improving labor force productivity is critical to expanding the supply of housing. By increasing the safety and desirability of construction work, and thereby expanding the pool of available workers and contractors, we can grow the labor force without which we cannot increase housing production. The following are recommended by CASA as a starting point. We also recommend ongoing work to implement the CASA recommendations in a manner which creates an effective and coordinated regional and State response the need for a larger construction labor force.

---

### **CASA Call for Action:**

1. Grow the workforce by increasing apprentice training, placement, and payment of prevailing wages when direct public funding, public land, fee abatement, tax abatement, CEQA exemptions, and other fiscal/economic development incentives are provided for housing (Compact items 7, 8, 9).
  2. Discourage the underground economy and require following of existing wage and workforce laws (Compact items 4, 5).
  3. Create a CASA/State labor workgroup charged with coordinating implementation of CASA policies and needed labor force expansion consistent with CASA principles.
  4. Call upon the State to use its workforce development and training programs to improve the construction employment pipeline and create improved pathways from secondary education into apprentice training programs.
- 

**References:** Compact Elements 4, 5, 7, 8 and 9.

---

# Local Best Practices

Local governments have a strong role to play in implementing CASA. This section will summarize a handful of best practices that could serve as a model for other jurisdictions in the region. The case study presented below is for illustrative purposes only. Other case studies will be added here by January 2019.

## Emergency Response to Fires in Sonoma County and the City of Santa Rosa

Sonoma County/City of Santa Rosa	Alignment with CASA Compact Elements
<b>Targets</b>	
<p><i>Production:</i> 30,000 units in five years (4,000 low-income subsidized)</p>	<p><i>Protection:</i> 300,000 lower-income HHs  <i>Preservation:</i> 2,000 units/year in 15 yrs  <i>Production:</i> 35,000 units/year in 15 years</p>
<b>Tenant Protections</b>	
<p><b>Protection from Price Gouging</b></p> <ul style="list-style-type: none"> <li>• <i>State law</i> – 10 percent cap on rent increases till end-2018, incl. building materials.</li> <li>• <i>City</i> – protections that allow civil lawsuits.</li> <li>• <i>County</i> – tenants of mobile home parks.</li> </ul> <p><b>Urgency Ordinance for Temporary Housing to Prevent Homelessness (County)</b></p> <p>The ordinance would allow:</p> <ul style="list-style-type: none"> <li>• Use of recreational vehicles and trailers as homes, with an emergency temporary permit.</li> <li>• Safe Parking Program for RVs, trailers and campers, to be parked overnight on county-owned land (basic services such as bathrooms, showers, and warming stations are provided).</li> <li>• Year-round occupancy in seasonal farmworker housing.</li> <li>• Replacement schools and child care centers in specific zones without a use permit.</li> <li>• Long-term rental of bed and breakfasts, inns, resorts, etc.</li> </ul>	<p><b>Just Cause Eviction Policy</b></p> <p><b>Emergency Rent Cap</b></p> <p><b>Access to Legal Counsel in Eviction Proceedings</b></p>
<b>Housing Inclusion and Capacity</b>	
<p><b>Incentives for ADUs</b></p> <ul style="list-style-type: none"> <li>• <i>Impact fee waivers</i> – for capital facilities, housing and parks.</li> <li>• <i>Utility connection fee waiver</i> – for new connection or capacity change for ADUs 750 sq.ft. or smaller.</li> </ul> <p><b>Incentives for Multi-Family Projects in Downtown Santa Rosa</b></p> <ul style="list-style-type: none"> <li>• Partial reduction in impact fees (capital and park fees).</li> <li>• Additional discounts for affordable/inclusionary housing.</li> </ul> <p><b>Additional inclusive housing capacity changes:</b></p> <ul style="list-style-type: none"> <li>• Make small SRO projects a permitted use/ remove size limits.</li> <li>• Allow transitional &amp; supportive housing in single-family zones.</li> </ul> <p><b>The County passed code changes to expand opportunities for housing in urban service areas by:</b></p> <ul style="list-style-type: none"> <li>• Simplifying development standards for multi-family housing</li> <li>• Allowing higher densities near jobs and transit, as a new Workforce Housing Combining Zone.</li> </ul>	<p><b>Removing Barriers to ADUs</b></p> <p><b>Minimum Zoning for Housing Near Transit</b></p> <p><b>Expedited Approvals and Financial Incentives</b></p>

- Allowing “cottage housing” that provides multi-unit housing in low- and medium-density areas.
- Allowing new density unit equivalent concept to encourage smaller rental units

---

### Approval Process and Timeline

---

#### Additional Staff Capacity

- *Resiliency Permit Center (County)* – expedited checks and permitting w/ contract staff
- *Resilient City Permit Center (Santa Rosa)* – expedited checks and permitting for fire affected property owners w/ contract staff

#### CEQA Exemption and Judicial Streamlining

- Requested for two specific plans (pending)

#### Permit and Approval Streamlining

The City of Santa Rosa has streamlined permitting by:

- **Allowing expansion of damaged nonconforming residential structures** to added living areas, ADUs, and JADUs.
- Increasing the allowable residential floor area in mixed-use projects from 50 to 80 percent.
- Delaying collection of fees until near occupancy.

**County of Sonoma has created expedited permitting for housing and ADUs**

#### Good Government Reform for Approval Process

#### Removing Regulatory Barriers for ADUs

#### Expedited Approvals and Financial Incentives

#### Call to Action: Labor Force Expansion

Reduce planning staff workload per project

Provide CEQA statutory exemption

Expand construction and building inspection labor force

Improve streamlining for all eligible projects

---

### Funding and Coordination

---

#### New Revenue and Financing Tools

- \$124 million, 30-year bond measure (failed November 2018 ballot).
- Portion of County Educational Revenue Augmentation Fund redirected to the RED for an Enhanced Infrastructure Finance District (EIFD) and affordable housing.

#### Renewal Enterprise District (RED)

- Joint powers authority proposed by County and City (to be decided in December 2018).

#### New Revenue and Financing Tools

- Public Land and \$1.5 billion/year
- Portion of BATA funds redirected to a Regional Infrastructure Bank (RIB).

#### Regional Housing Enterprise (RHE)

- Revenue collection/allocation
  - Land leasing/purchase
  - Technical assistance
  - Monitoring and reporting
-

# Appendices

- A. CASA Leadership Profiles (Co-Chairs and Moderators)
- B. Steering Committee Roster
- C. Technical Committee Roster

## Legislation Details (With Text)

---

**File #:** 18-1071      **Version:** 1      **Name:**

**Type:** Report      **Status:** Informational

**File created:** 11/29/2018      **In control:** CASA Technical Committee

**On agenda:** 12/3/2018      **Final action:**

**Title:** Review Racial Equity Analysis

**Sponsors:**

**Indexes:**

**Code sections:**

**Attachments:** [04\\_Racial Equity Analysis 113018.pdf](#)

Date	Ver.	Action By	Action	Result
------	------	-----------	--------	--------

**Subject:**  
Review Racial Equity Analysis

**Presenter:**  
Vikrant Sood

**Attachments:**



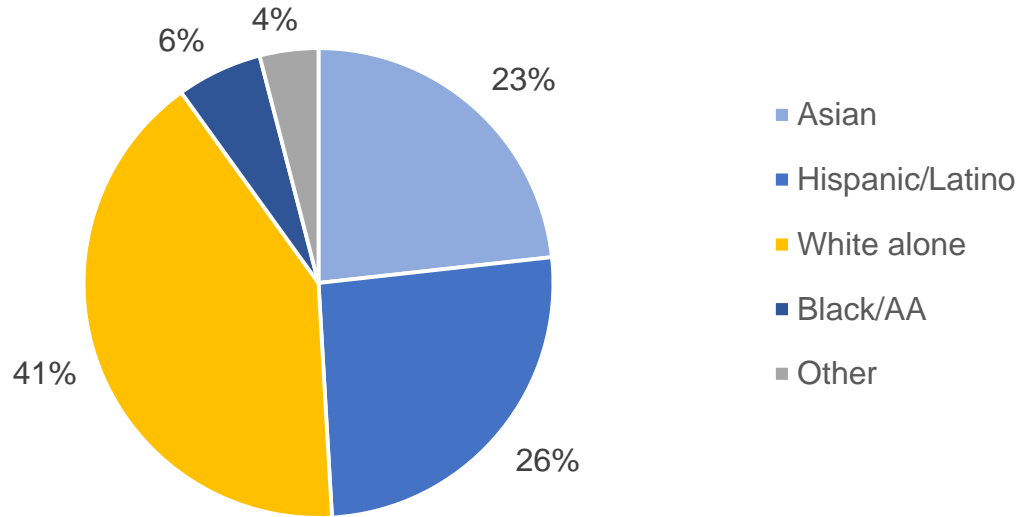


Racial Equity Analysis for the  
**CASA Compact**

November 30<sup>th</sup>, 2018

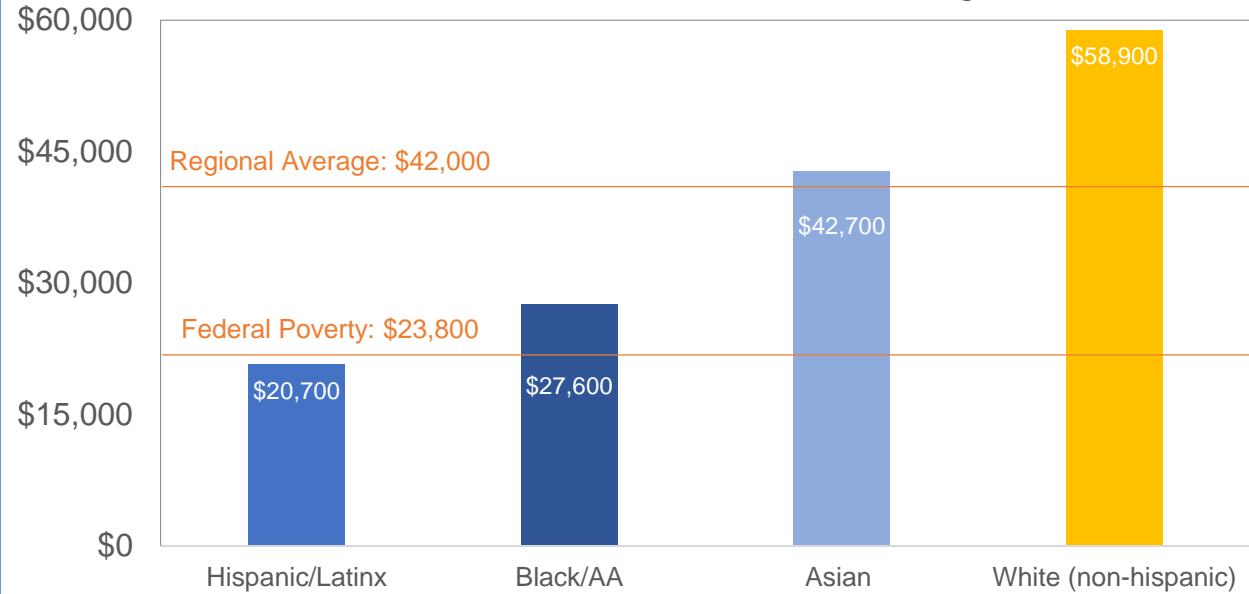
## Population by Race, Bay Area, 2016

Source: US Census ACS, 2012-2016 5-Yr. Avg.



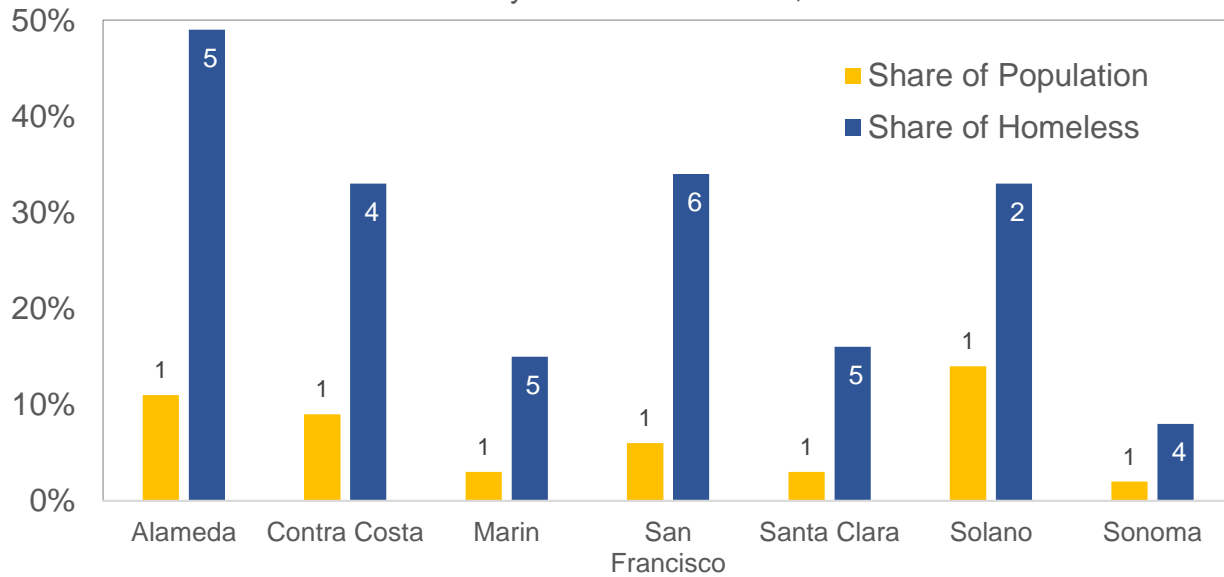
## Per Capita Income by Race, Bay Area, 2016

Source: US Census, ACS, 2012-2016, 5-Yr. Avg.



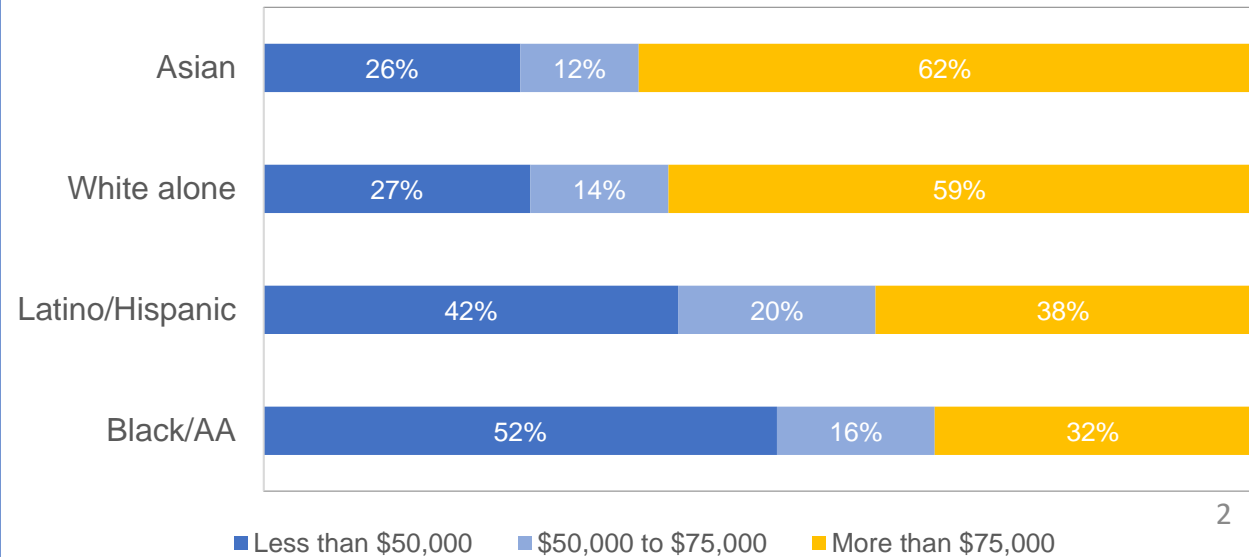
## Homelessness, Blacks/African Americans

Source: County Homeless Census, 2017/2018



## Household Income by Race, Bay Area, 2016

Source: US Census, ACS, 2012-2016, 5-Yr. Avg.

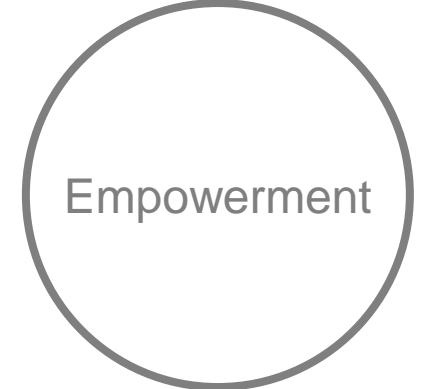
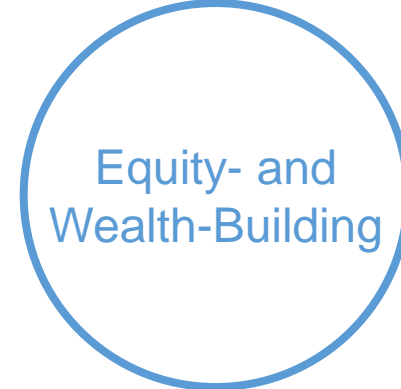




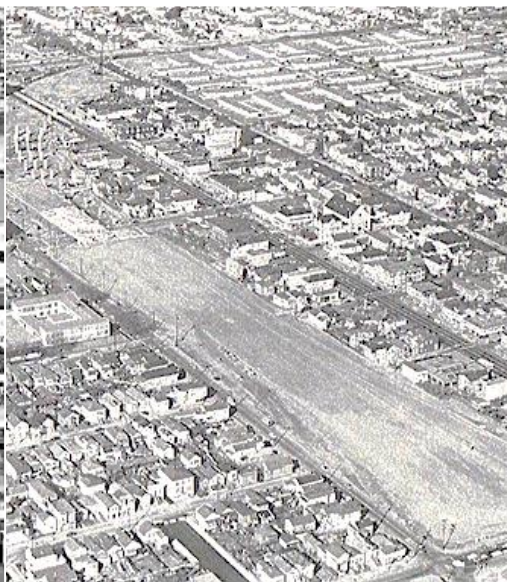
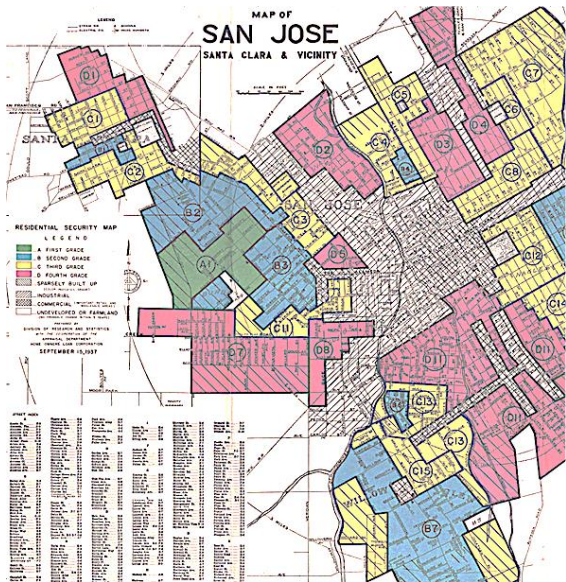
# Challenges and Opportunities

Racial Equity Lens for CASA

Cumulative Benefits



## Historic Patterns of Exclusion



## Gentrification and Displacement



Disinvestment and Urban Renewal

Housing Discrimination

Foreclosure Crisis



# Overall Approach

## Racial Equity Analysis for the CASA Compact

### Purpose

The analysis does not attempt to provide conclusive evidence or numeric results. But rather a framework for shaping policy and setting priorities.

### Placeholder for Sensitive Communities (SCs)

Defined for now as the overlap of communities of concern adopted by regional agencies: MTC, BCDC and BAAQMD.

### Geographic Focus

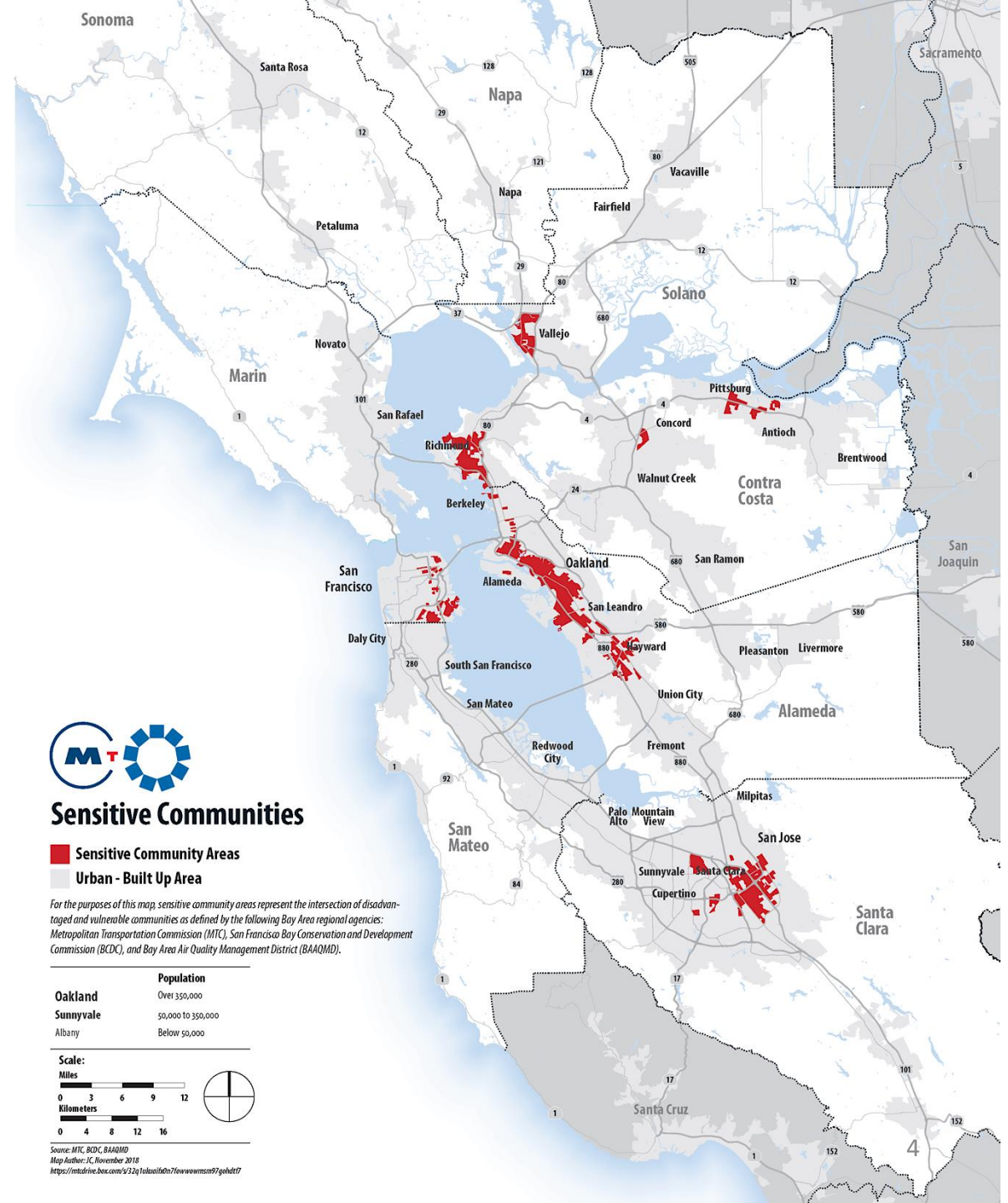
Most Compact Elements have a geographic component, which, for this analysis is evaluated using “policy overlays.”

### Policy Overlays

This analysis uses three policy overlays: transit access areas (TAAs), high-opportunity areas (HOAs) and displacement risk areas (DRAs).

### Income Used Where Race Data Unavailable

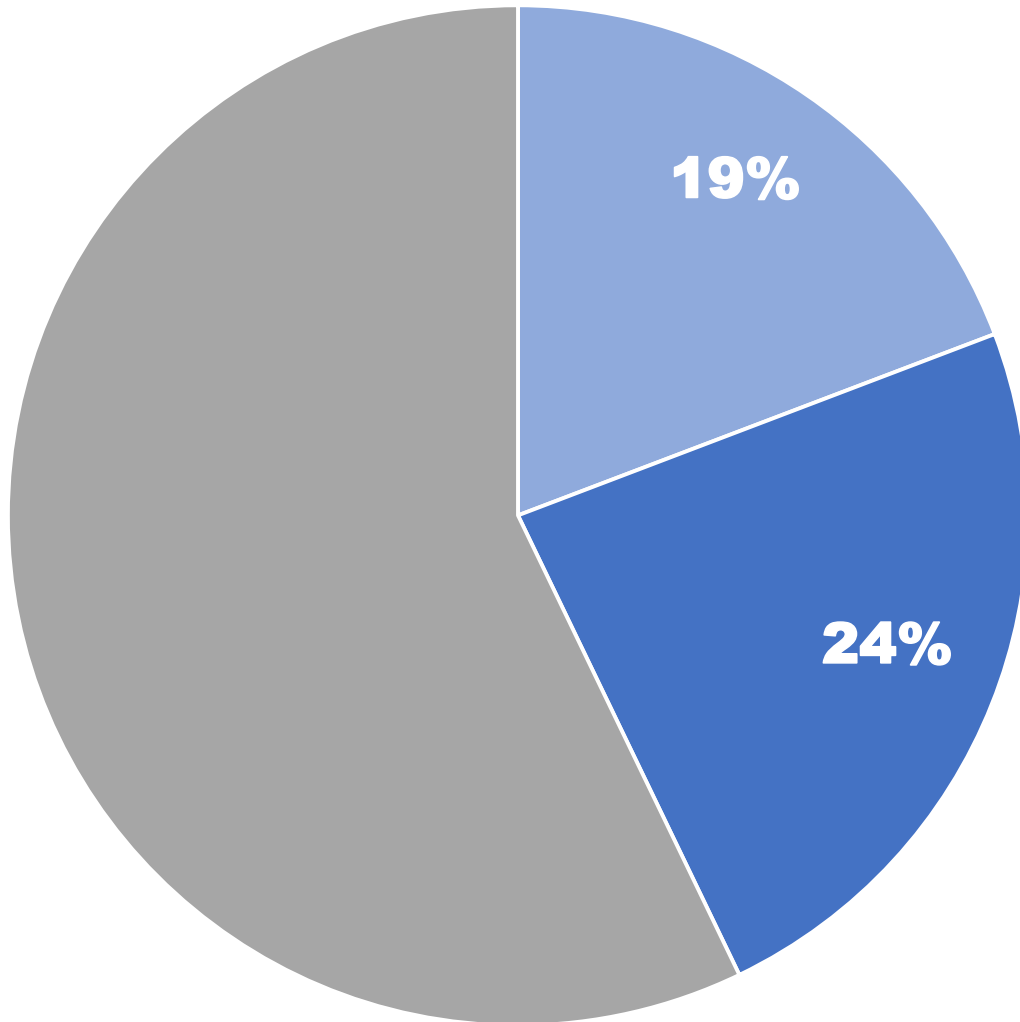
At a smaller geography, the analysis uses income instead of race.





## Low-Income Renter Households

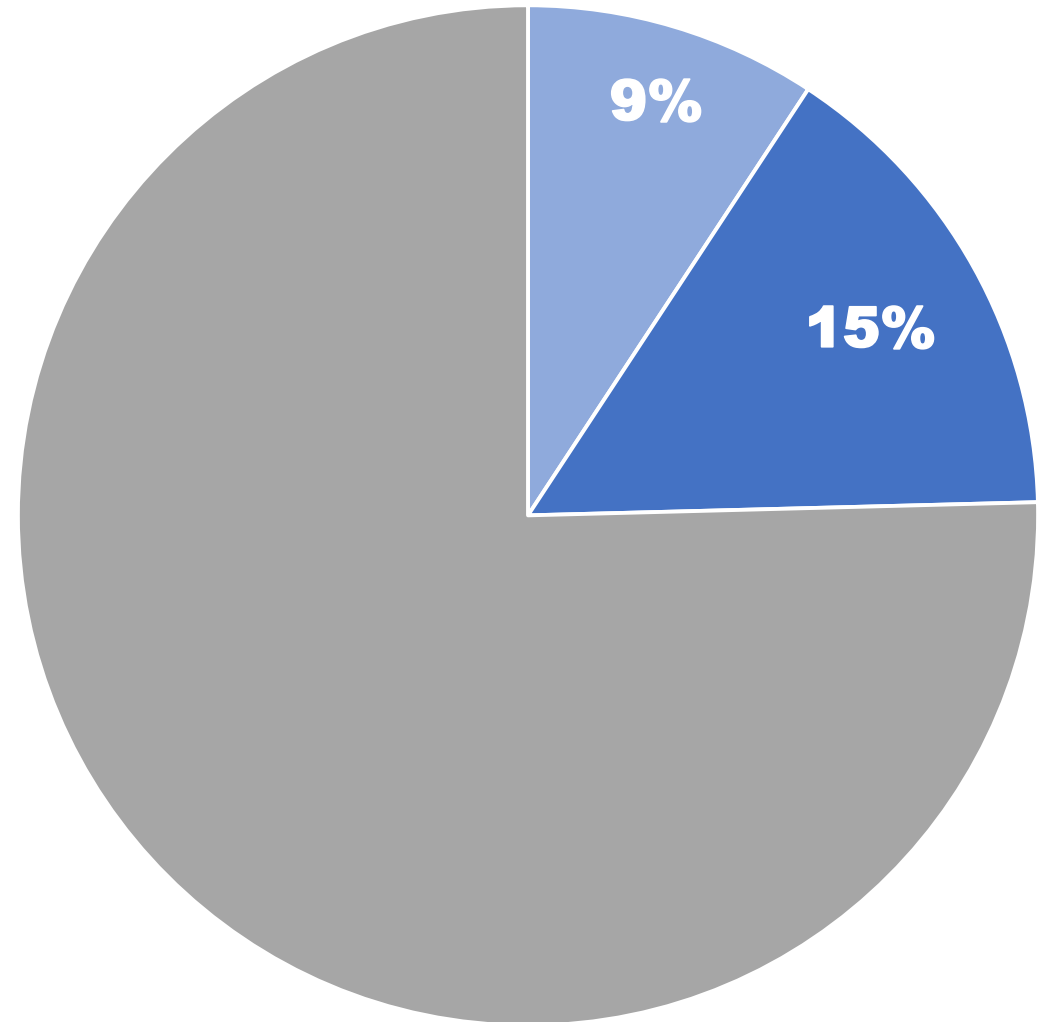
Source: US Census ACS 2012-2016 5-Yr. Avg.  
Low-Income – Earning \$75,000 or Less



- LI Renter HHs Paying 30-50% of Income on Housing
- LI Renter HHs Paying >50% of Income on Housing
- All Other Renter HHs

## Low-Income Minority Renters

Source: US Census PUMS 2012-2016 5-Yr. Avg.  
Low Income – 200 percent below Federal Poverty Level



- LI Minority Renters Paying 30-50% of Income on Housing
- LI Minority Renters Paying >50% of Income on Housing
- All Other Renters



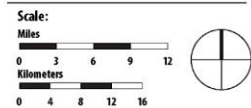
## Low-Income Renters Share of Households Paying Greater than 30% of Income on Housing



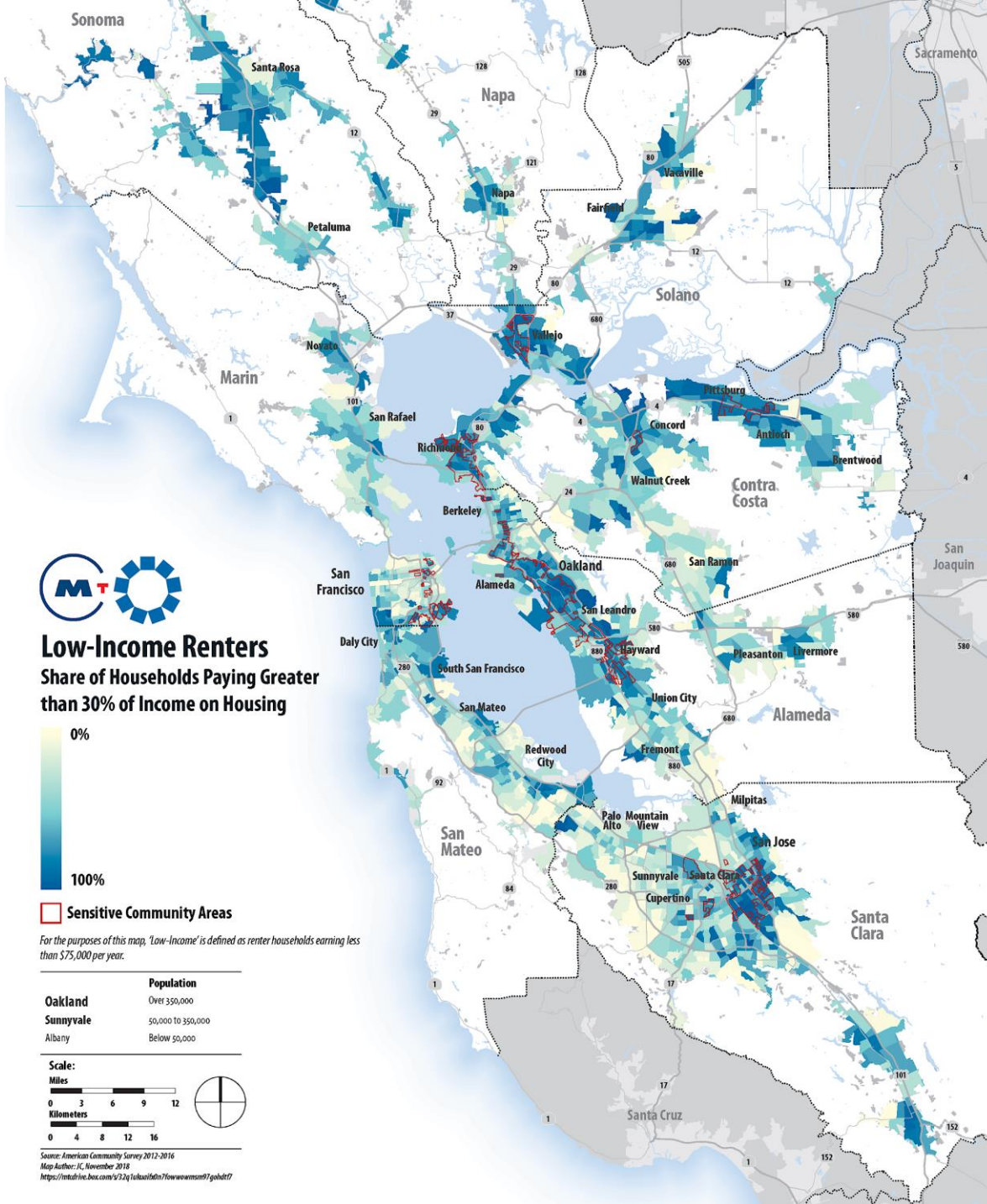
  Sensitive Community Areas

For the purposes of this map, 'Low-Income' is defined as renter households earning less than \$75,000 per year.

	Population
Oakland	Over 350,000
Sunnyvale	50,000 to 350,000
Albany	Below 50,000



Source: American Community Survey 2012-2016  
Map Author: IJC, November 2018  
<https://mtuhfrc.boc.com/v/22q1khuu1dn7l0wwmsmsn71gshdt/>



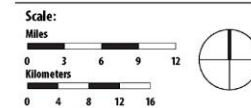
## Low-Income and Minority Renters Share Paying Greater than 30% of Income on Housing



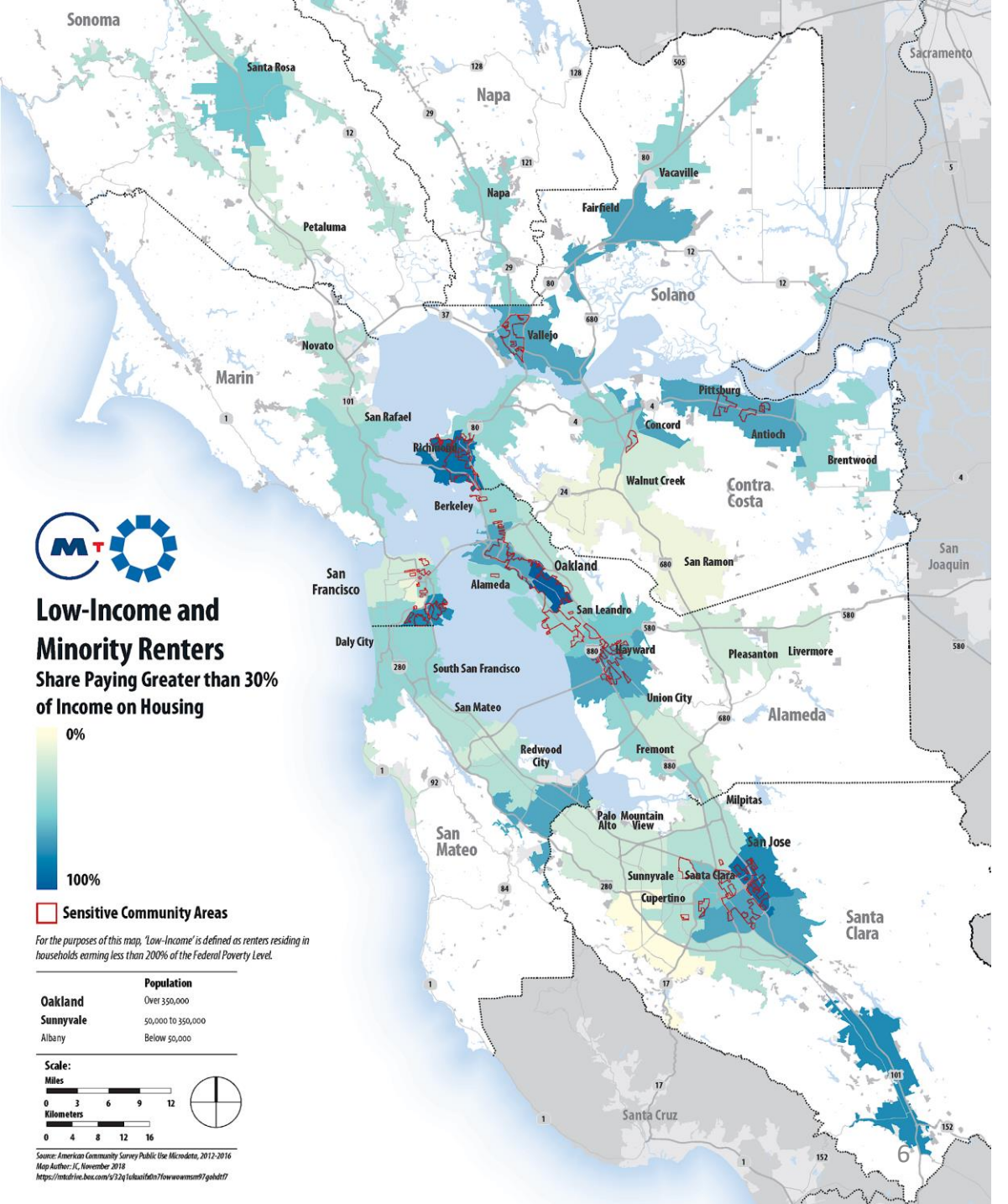
  Sensitive Community Areas

For the purposes of this map, 'Low-Income' is defined as renters residing in households earning less than 200% of the Federal Poverty Level.

	Population
Oakland	Over 350,000
Sunnyvale	50,000 to 350,000
Albany	Below 50,000



Source: American Community Survey Public Use Microdata, 2012-2016  
Map Author: IJC, November 2018  
<https://mtuhfrc.boc.com/v/22q1khuu1dn7l0wwmsmsn71gshdt/>





# Displacement Risk Areas

Policy Overlay

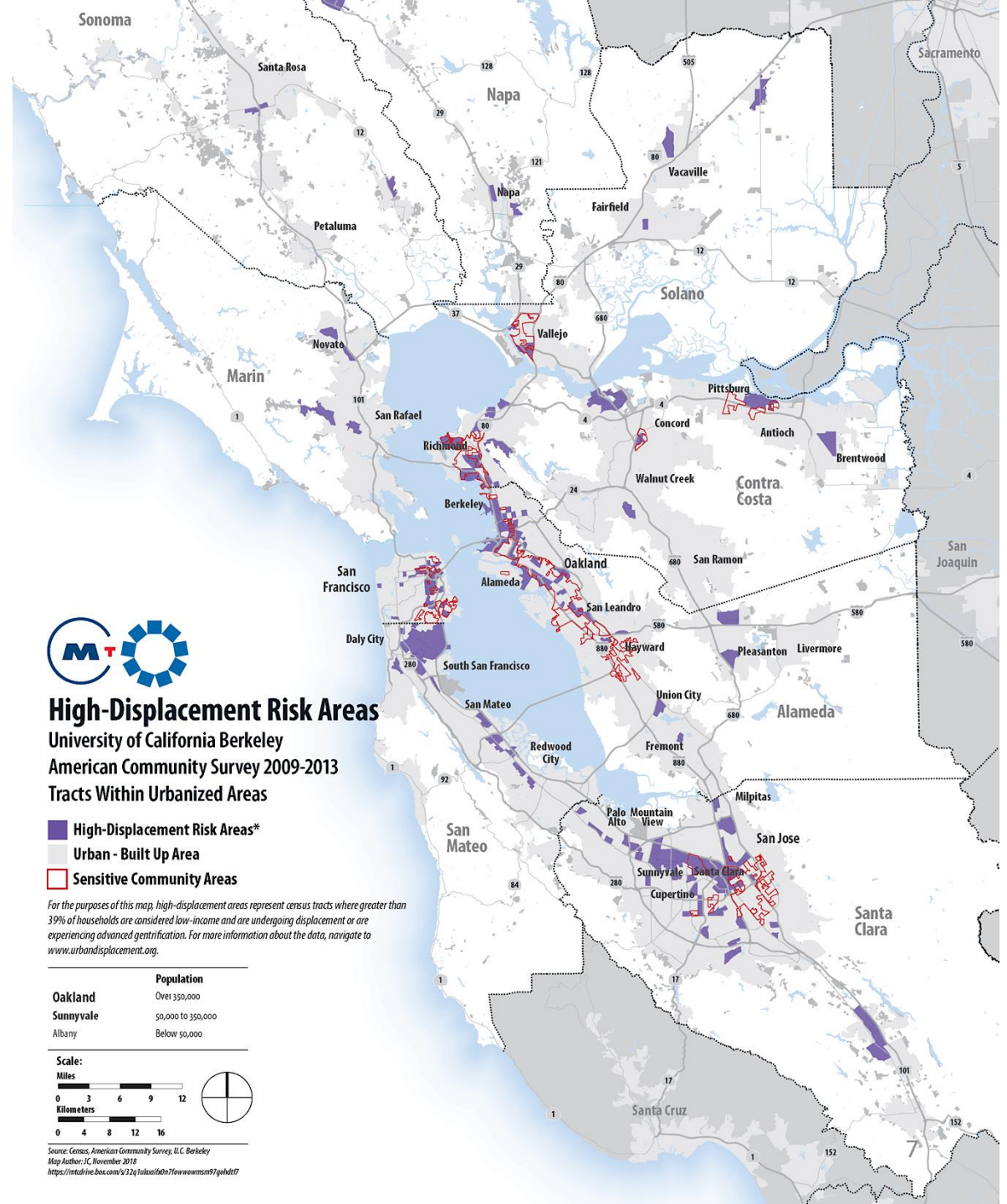


18 percent of low-income\* (LI) renter households (HHs) that pay more than 30 percent of income on housing live in DRAs

DRAs do not entirely overlap with SCs, including in San Francisco and Oakland

DRAs represent areas that are undergoing displacement or are in advanced stages of gentrification

\* HHs that earn less than \$75,000



# High-Opportunity Areas

## Policy Overlay

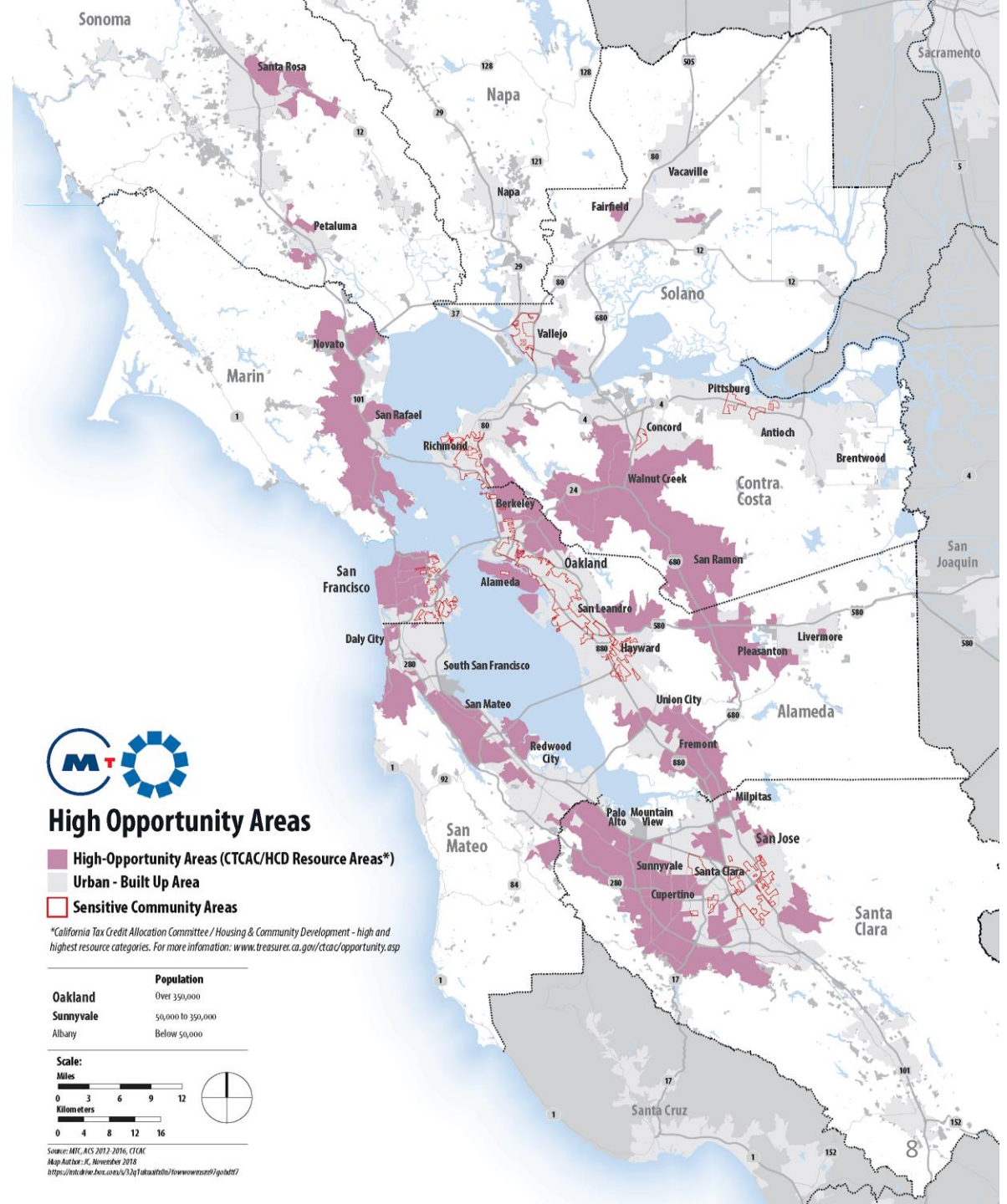


26 percent of LI\* renter HHs that pay more than 30 percent of income on housing live in HOAs

HOAs and SCs are almost completely exclusive geographies, which reflects Bay Area's segregation challenges

HOAs are considered "exclusion areas" that provide limited housing opportunities for LI / MI renter HHs

\* HHs that earn less than \$75,000





# Transit Access Areas

Policy Overlay

Stability and  
Protections

Community  
Reinvestment

Equity- and  
Wealth-Building

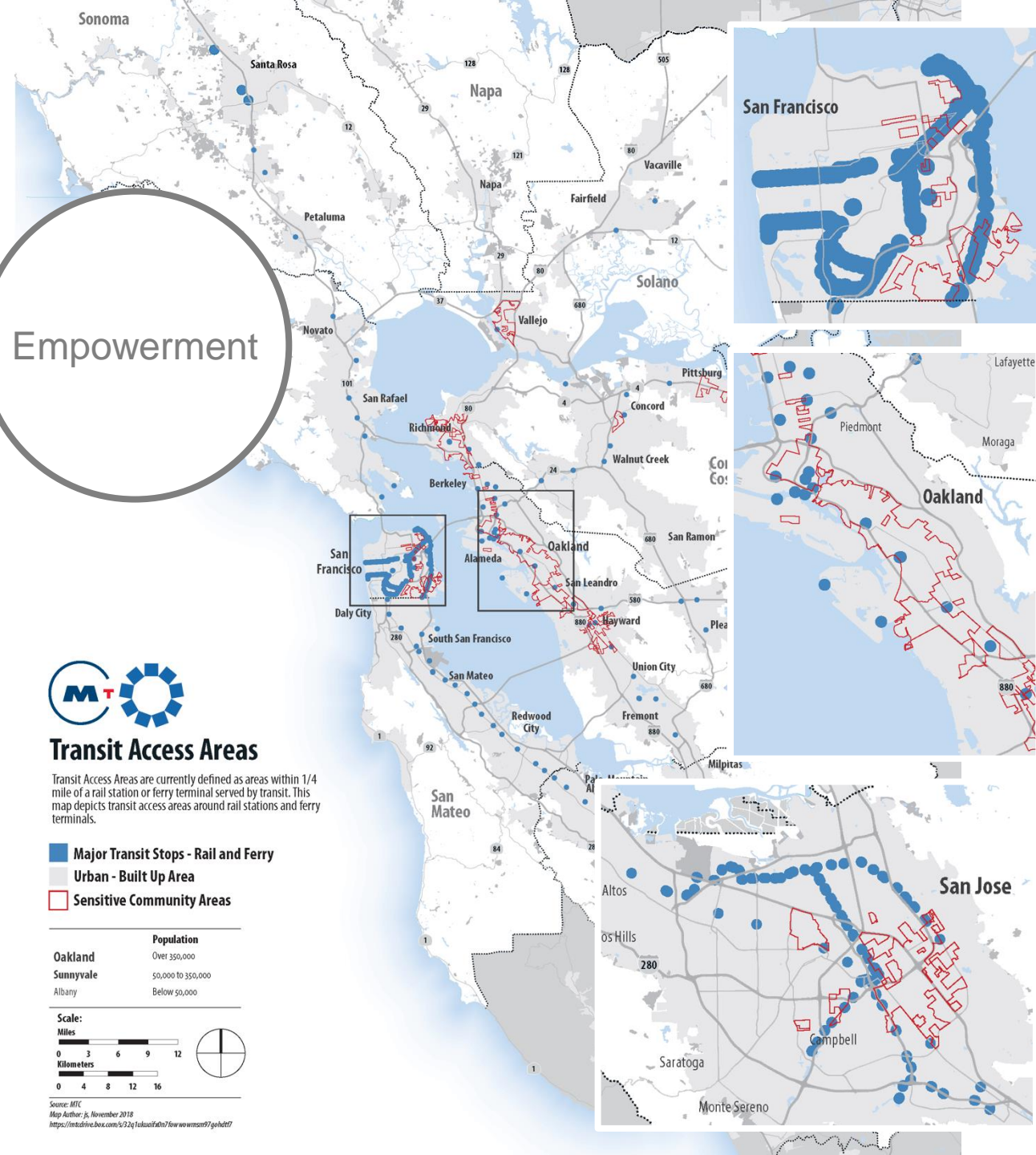
Empowerment

33 percent of LI\* renter HHs that pay more than 30 percent of income on housing live in TAAs

TAAs and SCs overlap in most areas, especially in the core urban communities such as San Francisco, Oakland and San Jose

Plan Bay Area 2040 promotes higher density infill development in TAAs, which helps the region meet its greenhouse gas targets

\* HHs that earn less than \$75,000







# Housing Inclusion and Capacity

4. Remove Barriers to Accessory Dwelling Units

## Approval Process and Timeline

6. Good Government Reforms to Local Approval Process

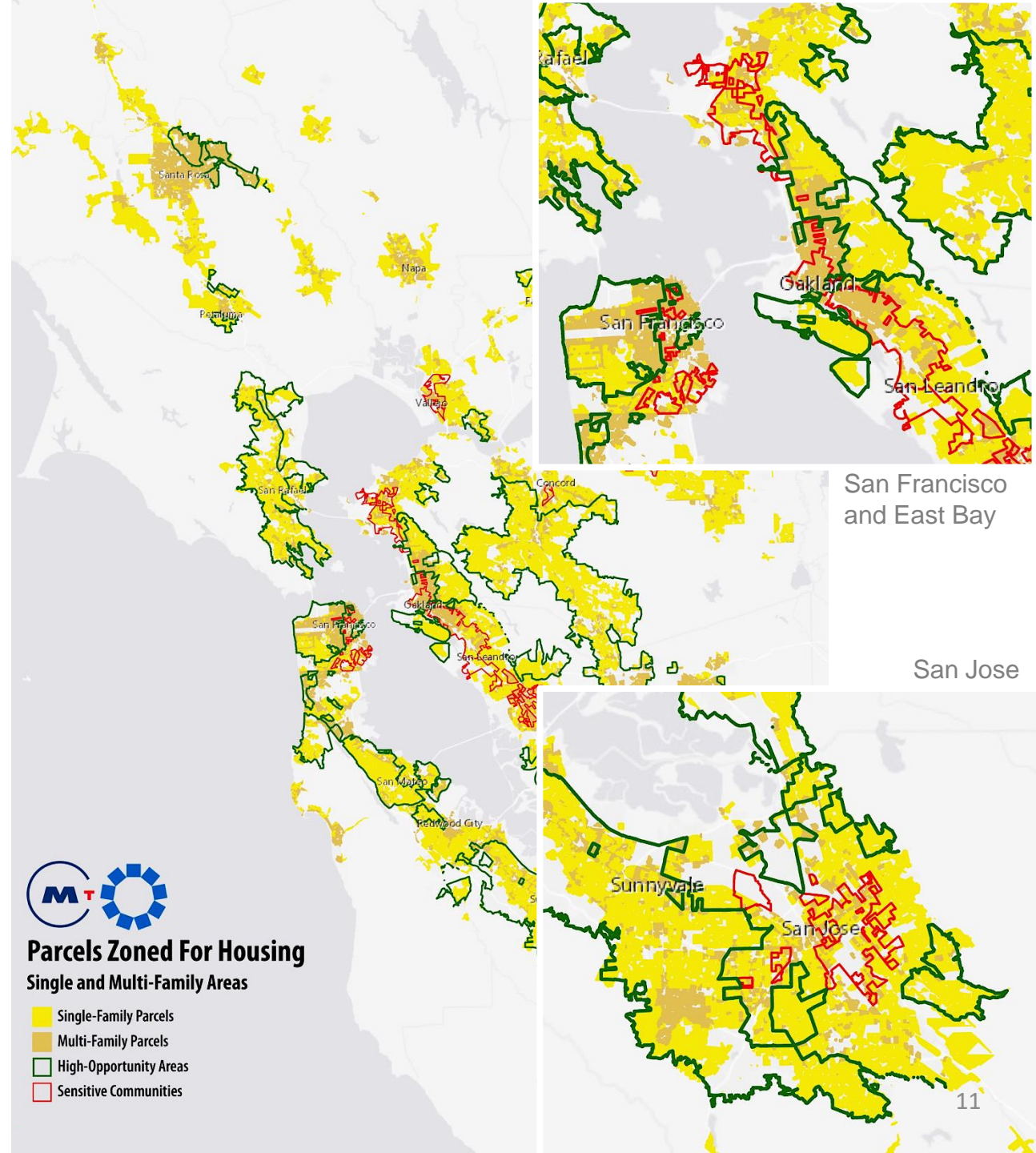
### Key Findings:

- Over 1.6 million parcels in the region are zoned for single- or multi-family housing\*
- Over 700,000 of these parcels are in HOAs, 301,000 in TAAs and 120,600 in SCs
- 15 percent of single-family parcels within TAAs already have a second unit

### Opportunities:

- ADUs / new units within HOAs will provide access to opportunity at scale
- ADUs / new units in TAAs and DRAs could provide homeownership / wealth-building opportunities, as well as mitigate displacement risk by increasing supply

\* Includes already built up parcels or acres



# Housing Inclusion and Capacity

## 5. Minimum Zoning for Housing Near Transit



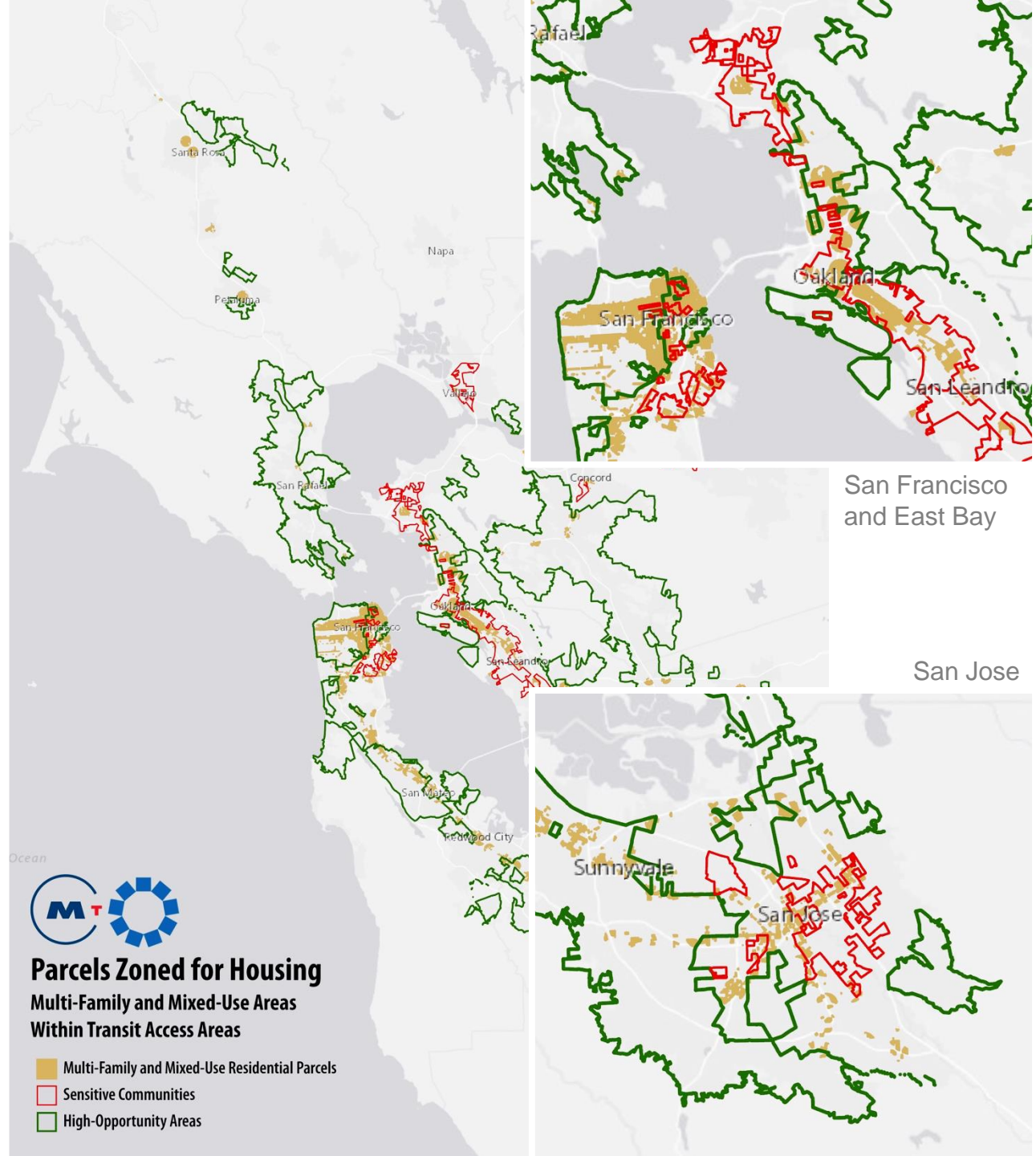
### Key Findings:

- A high-quality transit stop is within or adjacent to all SCs, enhancing regional access
- A deferral in SCs would affect a third of the area that is eligible for up-zoning\*
- That still leaves 19,200 acres outside SCs, 8,900 of which are in HOAs and 5,000 in DRAs

### Opportunities:

- Expanding development capacity for subsidized and mixed-income housing in HOAs will vastly expand access to opportunity
- And, in TAAs and DRAs, provide homeownership / wealth-building opportunities, as well as mitigate displacement risk by increasing supply of affordable units

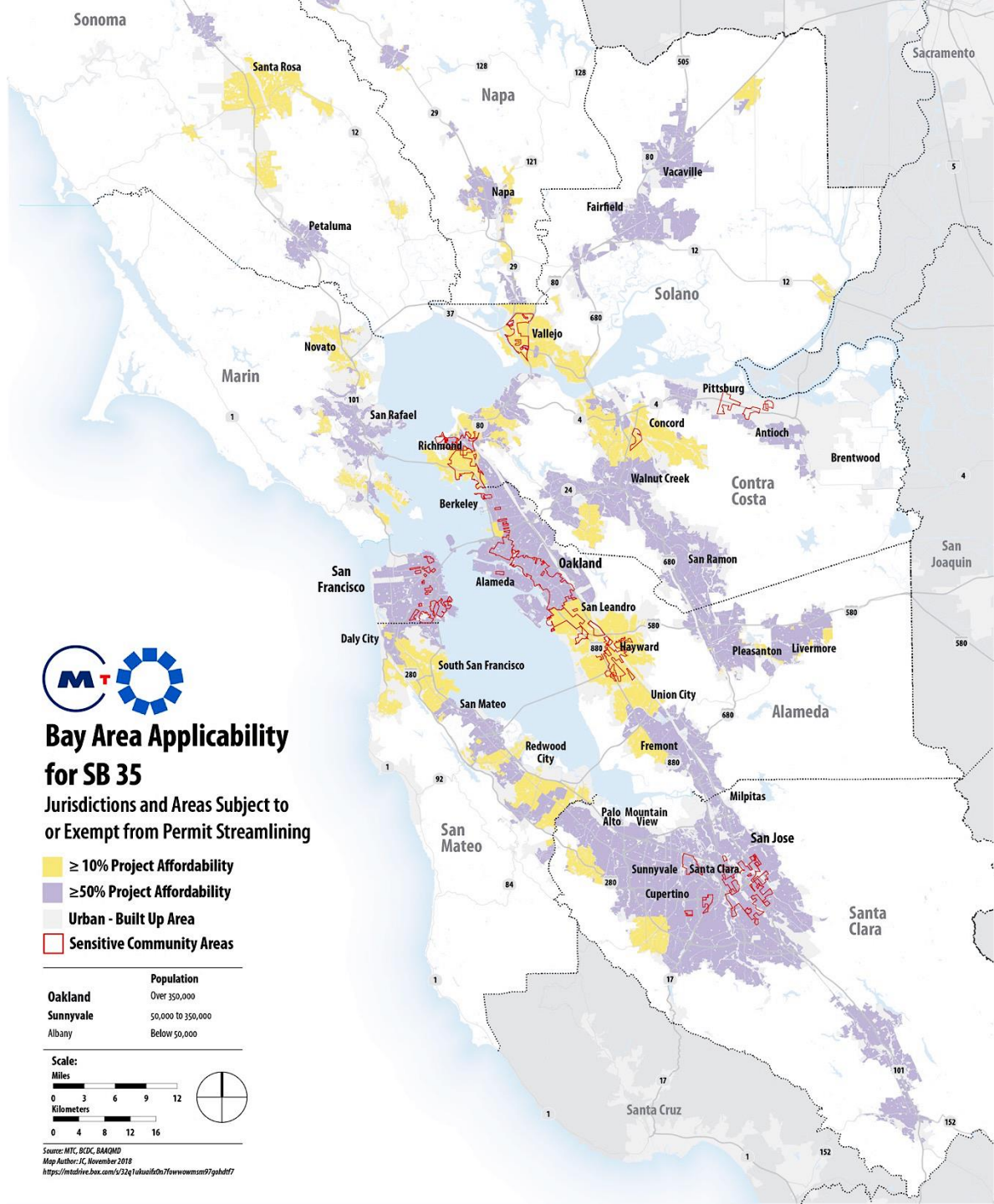
\* Includes already built up parcels or acres



**MT**  
**Parcels Zoned for Housing**  
Multi-Family and Mixed-Use Areas  
Within Transit Access Areas

Multi-Family and Mixed-Use Residential Parcels  
Sensitive Communities  
High-Opportunity Areas





# Approval Process and Timeline

## 7. Expedited Approvals and Financial Incentives



### Key Findings:

- Most jurisdictions failed to meet RHNA targets in one or more income categories, triggering SB 35 streamlining
- The three large cities with sizable SCs fell short on affordable units, while weaker markets with SCs (Vallejo, Hayward and Richmond) fell short on market-rate units

### Opportunities:

- Streamlining for subsidized housing in HOAs (North Bay, Tri-Valley and South Bay) will expand access to opportunity
- Streamlining for subsidized housing in TAAs / DRAs will mitigate displacement risk



# ● ● ○ ○ Funding and Coordination

9. New Revenue to Implement the CASA Compact  
 10. Regional Housing Enterprise

## Revenue Allocation Assumed for Analysis

Investment Buckets	Lower-Income (\$1.3 billion)	Moderate-Income (\$60 million)	Market-Rate	Total (\$1.5 billion)
Local Jurisdiction Incentives	\$120 million			\$120 million
Tenant Protection	\$60 million (24,000 LI-HHs)	\$30 million (12,000 MI-HHs)	Direct Benefit (e.g., deterrence)	\$90 million
Preservation	\$200 million (2,000 units)			\$200 million
Production	\$1.1 billion (7,300 units)	\$30 million (750 units)	Direct Benefit (e.g., streamlining)	\$1.1 billion

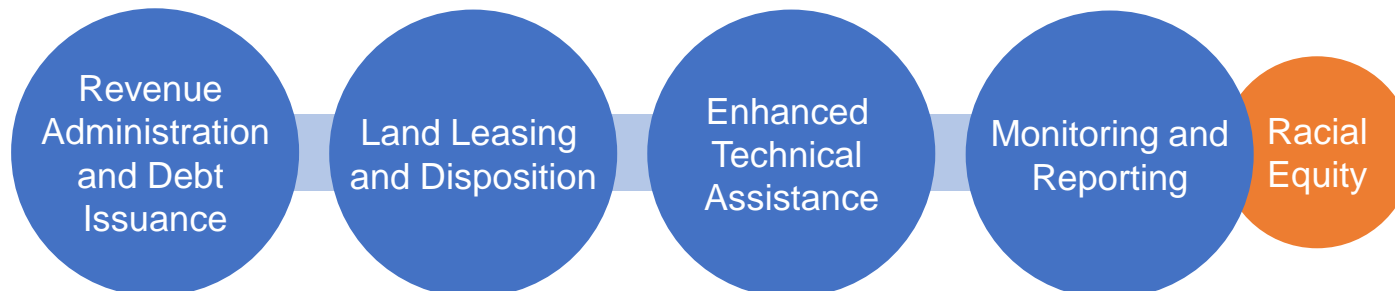
### Direct Benefits:

- Access to legal counsel
- Short-term rental assistance
- Subsidy for production
- Subsidy for preservation
- Homeownership opportunities
- Construction jobs

### Indirect Benefits:

- Stability through deterrence
- Access to opportunity
- Improved health outcomes
- Capacity-building (public, private and non-profit sector)
- Data

## Regional Housing Enterprise Roles





# Provisional Findings

## Overall, impacts should be positive

With an emphasis on 3 Ps, the Compact has the potential to improve housing outcomes for low-income residents, and by extension for low-income minorities.

## Implementation will take collective action

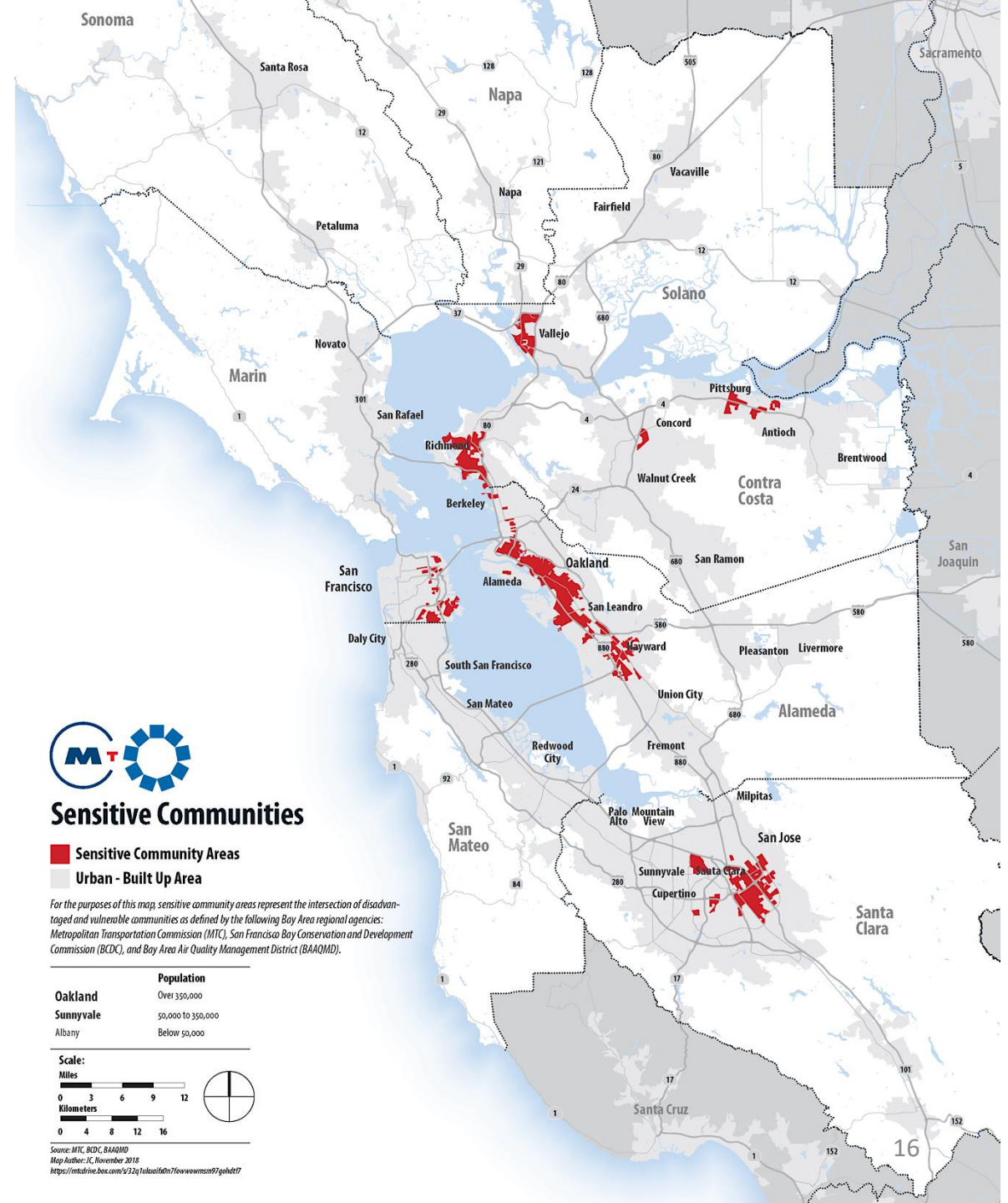
How the Compact is implemented will determine if the potential benefits are realized. CASA can utilize best practices to shape effective policies and strategies.

## Geography could help inform priorities

Historically, public and private actions at CASA's scale have negatively impacted minorities. So, sequencing and phasing implementation is critical.

## RHE could provide institutional support

A regional entity focused on housing can play a critical role by setting effective program guidelines, monitoring / reporting on progress and providing technical assistance.





# Benefits / Impacts of Compact Elements

NOTE: this table will be populated through an outreach process with impacted communities

Key	<i>X Beneficial but Mitigation Needed</i>	<i>XX Beneficial and Mitigation Not Needed</i>	<i>XXX Element itself is the Mitigation</i>	
CASA Compact Elements	Displacement Risk Areas (DRAs)	High Opportunity Areas (HOAs)	Transit Access Areas (TAAs)	Mitigation Measures
1/2/3. Just Cause / Rent Cap / Legal Counsel				
4/6. Accessory Dwelling Units / Good Govt. Reforms				
5. Minimum Zoning for Housing Near Transit*				
7. Expedited Approvals and Financial Incentives				
8. Public Land for Affordable Housing				
Preservation of Existing Affordable Units				

\* Deferred in Sensitive Communities