

An aerial photograph of a residential neighborhood in Los Altos, California. A large yellow rectangular highlight is placed on a vacant lot in the center-right of the image, indicating the location of the Los Altos Hillview Community Center. The surrounding area consists of houses, streets, and green spaces.

LOS ALTOS HILLVIEW COMMUNITY CENTER LOS ALTOS, CA

NOLL & TAM ARCHITECTS
JANET TAM
PRINCIPAL IN CHARGE

JAMES GWISE
PROJECT MANAGER

TRINA GOODWIN
INTERIOR ARCHITECT

CITY COUNCIL MEET
JULY 10th, 201

COUNCIL PROJECT UPDATE AT 60% DESIGN DEVELOPMENT

- 6/27 COMPLETE STREETS COMMISSION APPROVAL & COMMENT
- REVIEW OF COMMUNITY CENTER DESIGN DEVELOPMENT PROC
- EXTERIOR MATERIALS AND INTERIOR CHARACTER

- **NEXT STEPS**

- 8/02 PLANNING COMMISSION REVIEW (7/23 MATERIALS DIRECTOR ESTABLISHED)
 - 9/11 COUNCIL APPROVAL OF DD PHASE AND PROCEED TO C
-

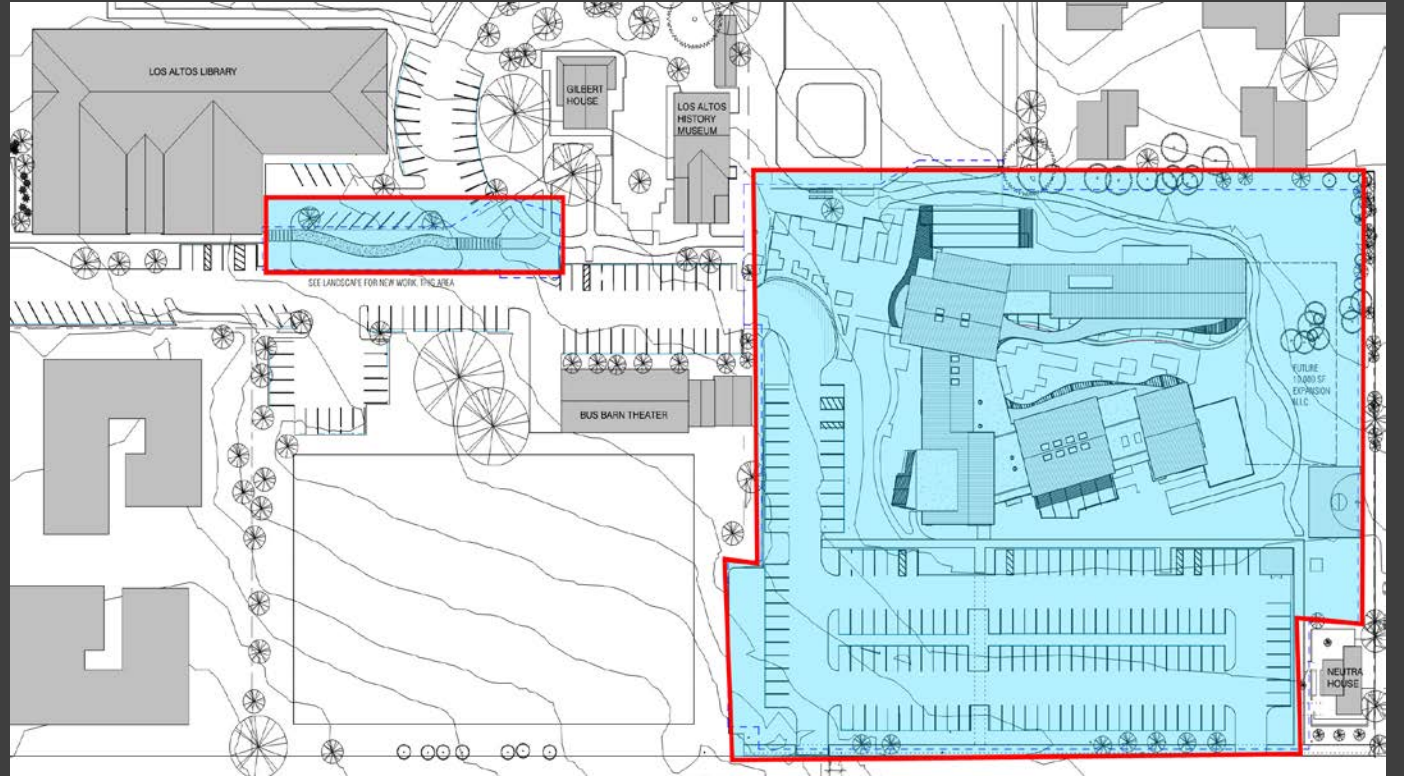
DESIGN DEVELOPMENT PROGRESS REPORT

INCREASED DESIGN DEVELOPMENT SCOPE



ORIGINAL SCOPE

110,000 sf site/20,000 sf building

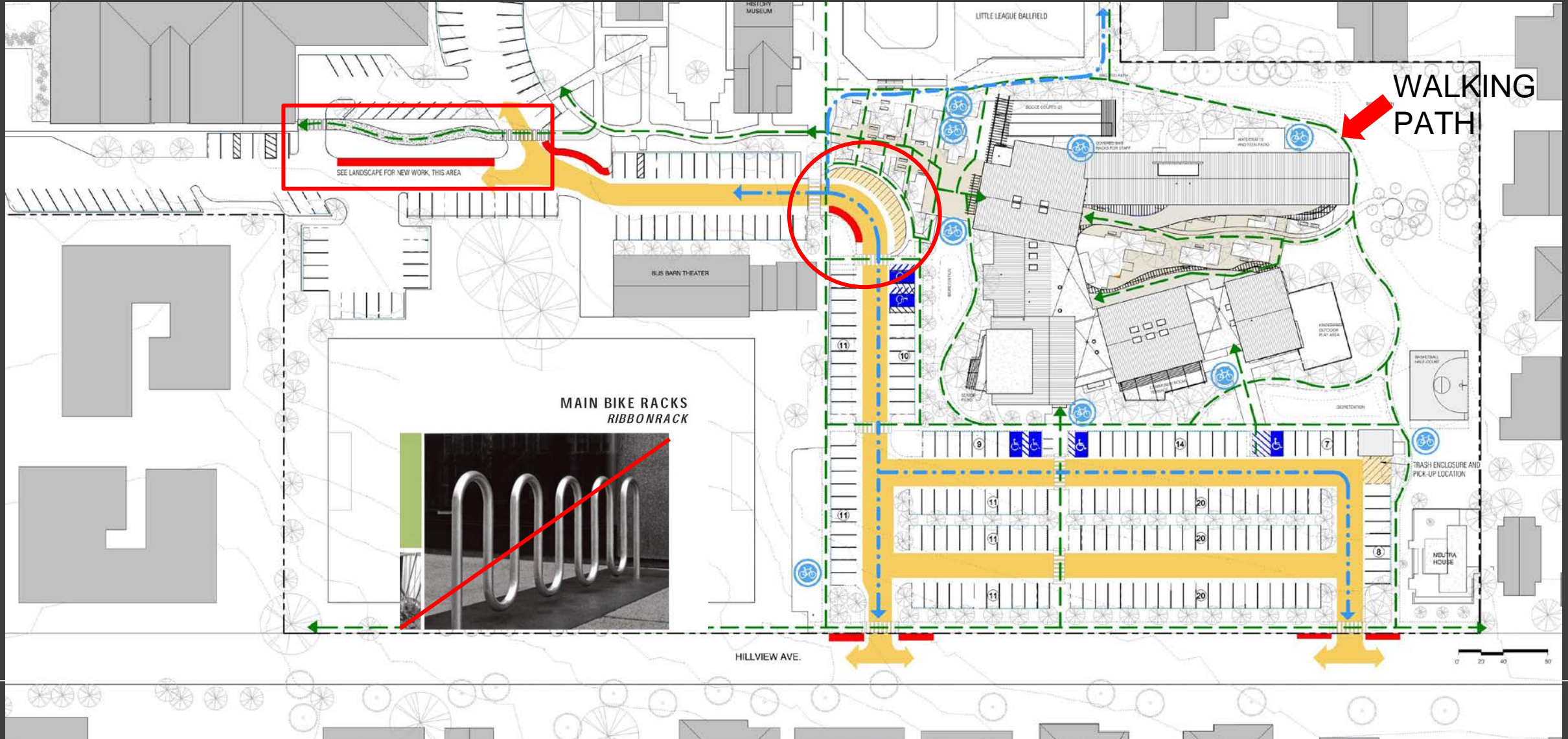


DESIGN DEVELOPMENT SCOPE

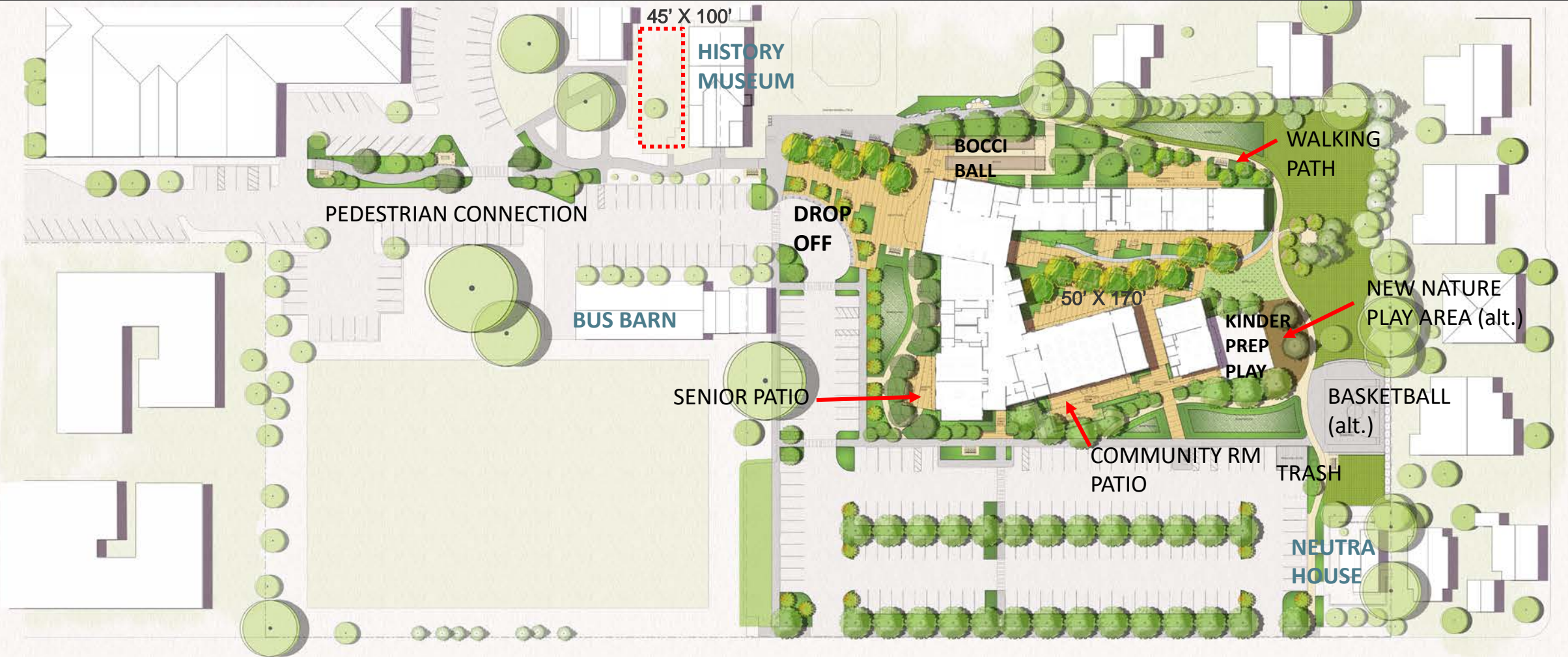
198,000 sf site/24,500 sf building

6/27 COMPLETE STREETS COMMISSION COMMENTS

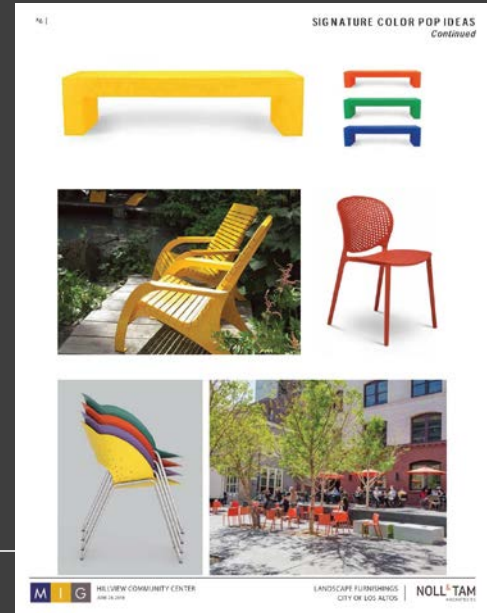
- MINIMIZE REDUCTION OF LIBRARY PARKING RE EVALUATE RIBBON BIKE RACKS
- REVIEW DROP OFF TO PREVENTURNS
- WIDER WALKING PATH



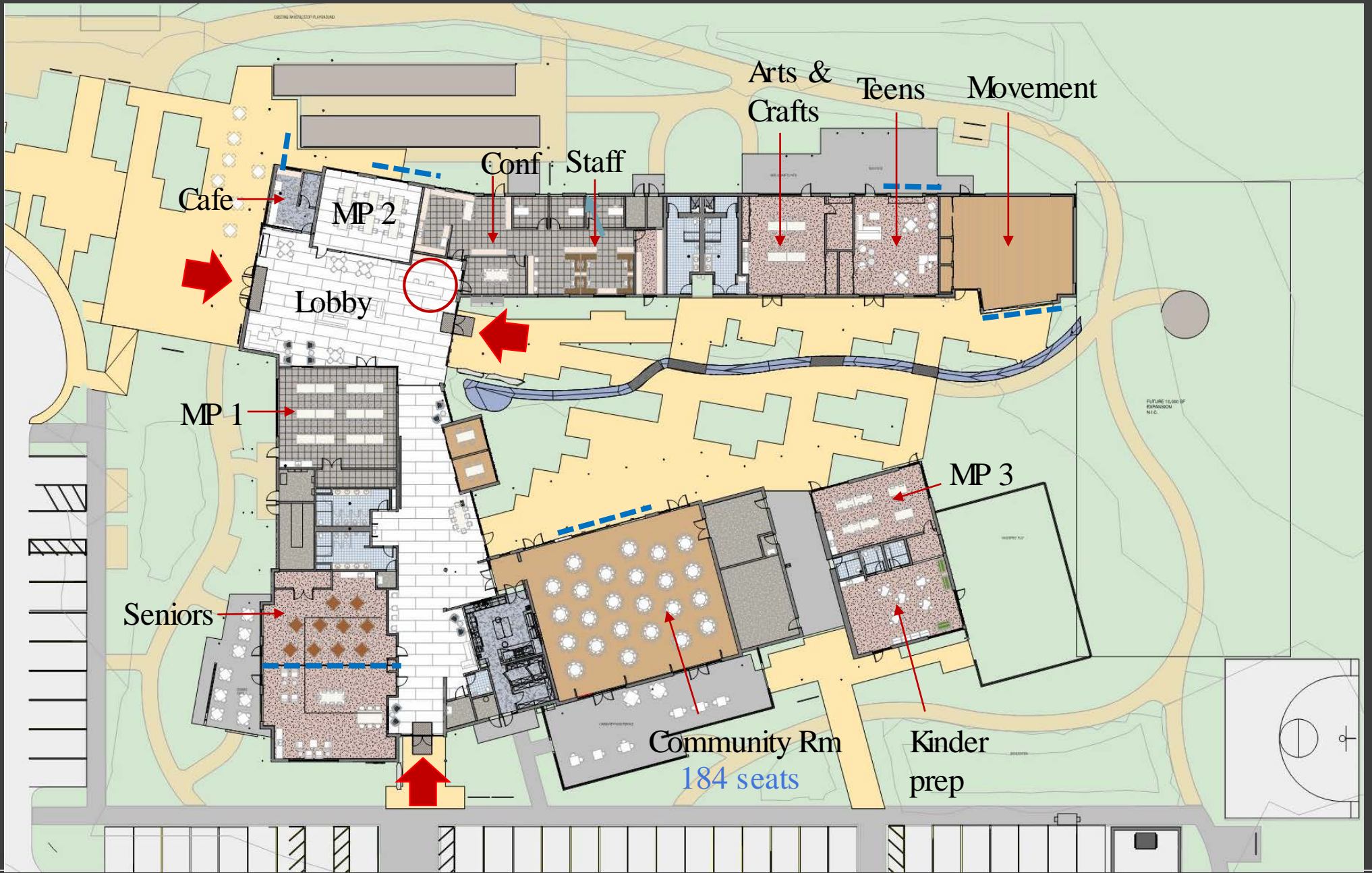
DESIGN DEVELOPMENT SITE & LANDSCAPE PLAN



COLOR POP LOCATION



24,500 sf



DESIGN DEVELOPMENT FLOOR PLAN

NEW
HILLVIEW
COMMUNITY
CENTER

LITTLE LEAGUE
BALLFIELD

HISTORY
MUSEUM



NEW NATURE
PLAY AREA

HILLVIEW
AVE

SOCCER
FIELD

AERIAL VIEW FROM ABOVE @ LIBRARY

EXTERIOR MATERIAL PALETTE

- NATURAL WOOD
 - CEMENT FIBER PANEL
 - CEMENT PLASTER (STUCCO)
 - STONE ACCENTS
-

Precedents and Context

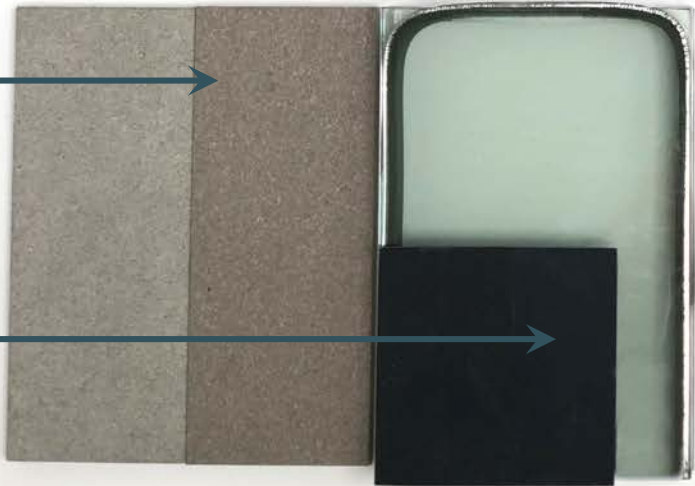


METAL ROOFING



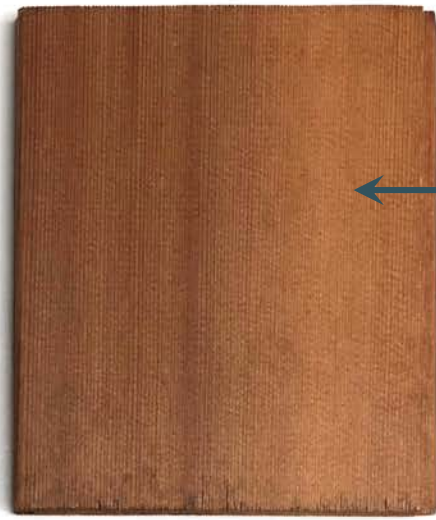
NATURAL WOOD ACCENT WALLS

FIBER CEMENT PANELS



WINDOW GLAZING W/ ALUMINUM FRAMES

STUCCO



NATURAL WOOD SOFFITS AND TRELLIS

SCORED CONCRETE PLAZA PAVING

BOCCI COURT

COURTYARD RIVER ROCK

DG WALKING PATH



NATURAL STONE SITE WALLS



LT60



FIBER CEMENT WALL PANEL EXAMPLES



MAIN ENTRY FROM LIBRARY CONNECTION



MAIN ENTRY & CAFE



SOUTH ENTRY



AERIAL VIEW FROM HILLVIEW



COURTYARD VIEW



COURTYARD FROM MAIN LOBBY

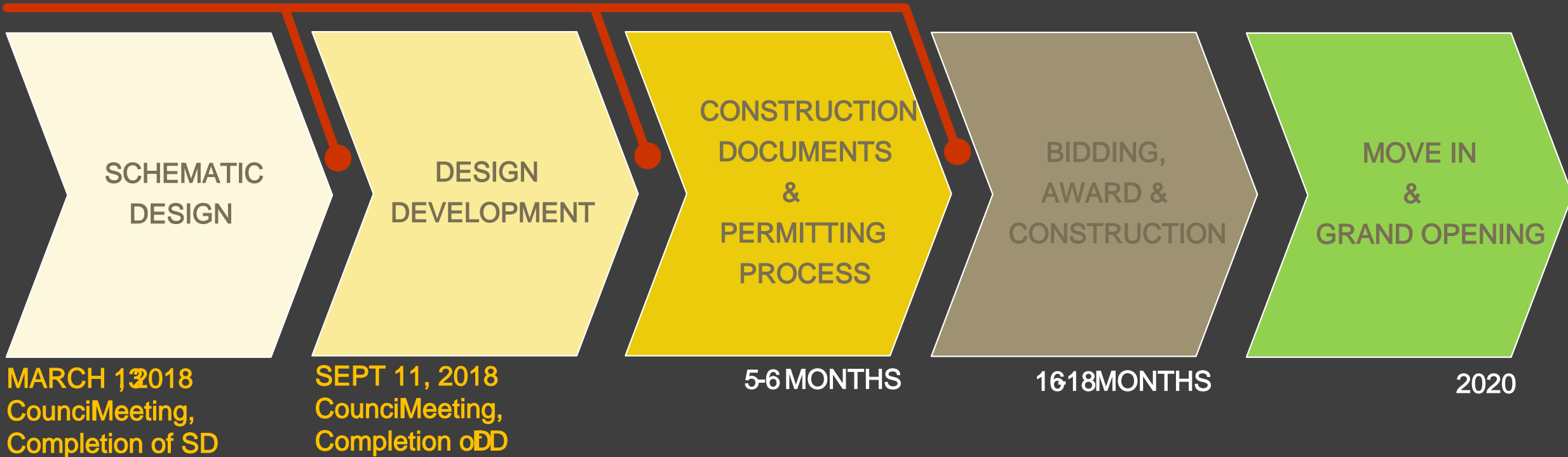


COURTYARD VIEWED FROM EAST

COUNCIL DISCUSSION

Are there any elements of the project that Council would like to provide direction on?

CITY REVIEW & COST ESTIMATING MILESTONES



LOS ALTOS COMMUNITY CENTER DESIGN & CONSTRUCTION SCHEDULE