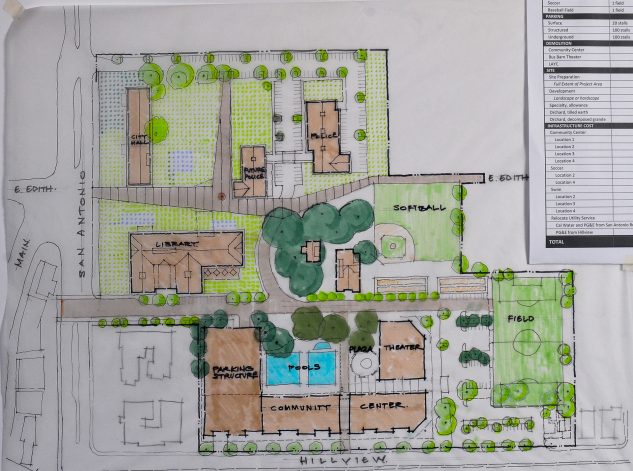
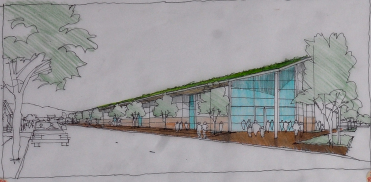
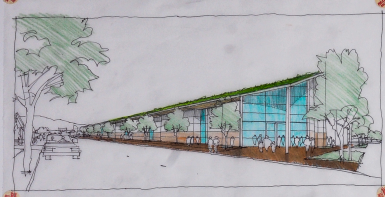


BARNEY DAVIDG
 JERRY KING, FAIA
 HARI SRIPADANNA
 STEVE SONA
 LEE MEI

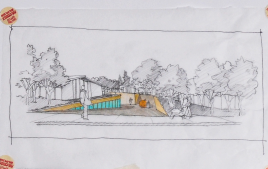


	Construction Cost	Qty	Cost	
FACILITIES				
Community Center	\$5,400 SF	1	25.95	
Open Center	20,800 SF	1	2.55	
Sector	1 field	1	1.01	
ROADS				
Surface	23 miles	0.535 M	0.55	
Structural	180 miles	0.205 M	2.18	
Underground	180 miles	0.488 M	3.14	
CONCRETE				
Community Center	0.845 M	1	0.61	
Box Barn Theater	0.876 M	1	0.04	
LACT	0.876 M	—	—	
MIS				
Site Preparation	0.475 M	100,000 SF	0.80	
Full Scope of Project Area	Development	0.107 M	130,000 SF	2.05
Landscaping and Irrigation	0.845 M	1	0.61	
Director's Office work	0.208 M	—	—	
Director's Administrative Grants	0.117 M	—	—	
APPROPRIATIVE COST				
Community Center				
Location 1	0.108 M			
Location 2	0.209 M	✓	0.24	
Location 3	0.205 M			
Location 4	0.227 M			
Location 5	—			
Location 6	0.111 M	✓	0.12	
SOFTBALL				
Location 1	0.137 M	1	0.27	
Location 3	0.135 M			
Location 4	0.122 M			
Recreation Utility Service				
Car Meter and PG&E from San Antonio, Inc	0.024 M			
PG&E Utility Refund	0.014 M			
TOTAL			50.08 M	

\$47.99



BARNEY DAVIDGE
 JERRY KING, FAIA
 HARI SRIPADANNA
 STEVE SOWA
 LEE MEI



	Construction Cost	Qty	Cost
FACILITIES			
Community Center	85,000 SF	\$ 125,239	1 25.24
Swim Center	89,000 SF	\$ 12,500	1 12.50
Sever	3' Pipe	\$ 120.00	1 1.01
Excavation	5' Pipe	\$ 120.00	-
PAVING			
Surface	25 units	\$ 1.10	27.50
Subgrade	200 units	\$ 1.10	220.00
Underground	100 units	\$ 1.10	110.00
UTILITIES			
Community Center			1 0.41
Bus Barn Theater			1 0.06
LANC			\$ 0.00
SITE			
Site Preparation	\$ 4,750	100,000 SF	0.80
Final Phase of Project Area			
Development	\$ 10,750	135,000 SF	2.05
Landscaping or hardscape			
Specialty, aluminum	\$ 0.81 M		0.61
Grchard, filled asphalt	\$ 0.88 M		-
Grchard, developed areas	\$ 0.18 M		-
INFRASTRUCTURE COST			
Community Center			
Location 1	\$ 1,000		
Location 2	\$ 1,000	✓	0.24
Location 3	\$ 1,000		
Location 4	\$ 1,000		
Sever			
Location 1	\$ 0.12 M	✓	0.12
Location 2	\$ 0.12 M		
Location 3	\$ 0.12 M	1	0.24
Location 4	\$ 0.12 M		
Relocate 1000 Service	\$ 0.10 M		
Car Water and P&E from San Antonio Rd	\$ 0.10 M		
Public from Hillview	\$ 0.10 M		
TOTAL			\$ 6.00 M

\$47.79 M